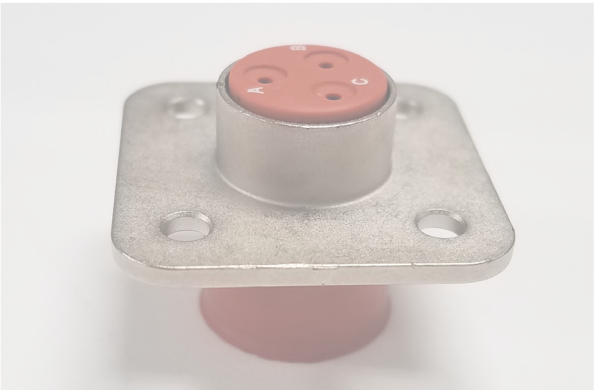
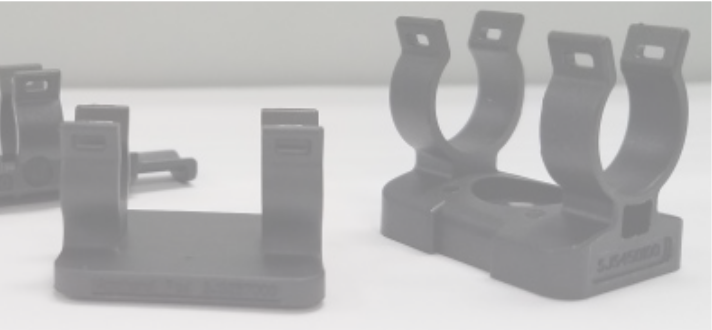
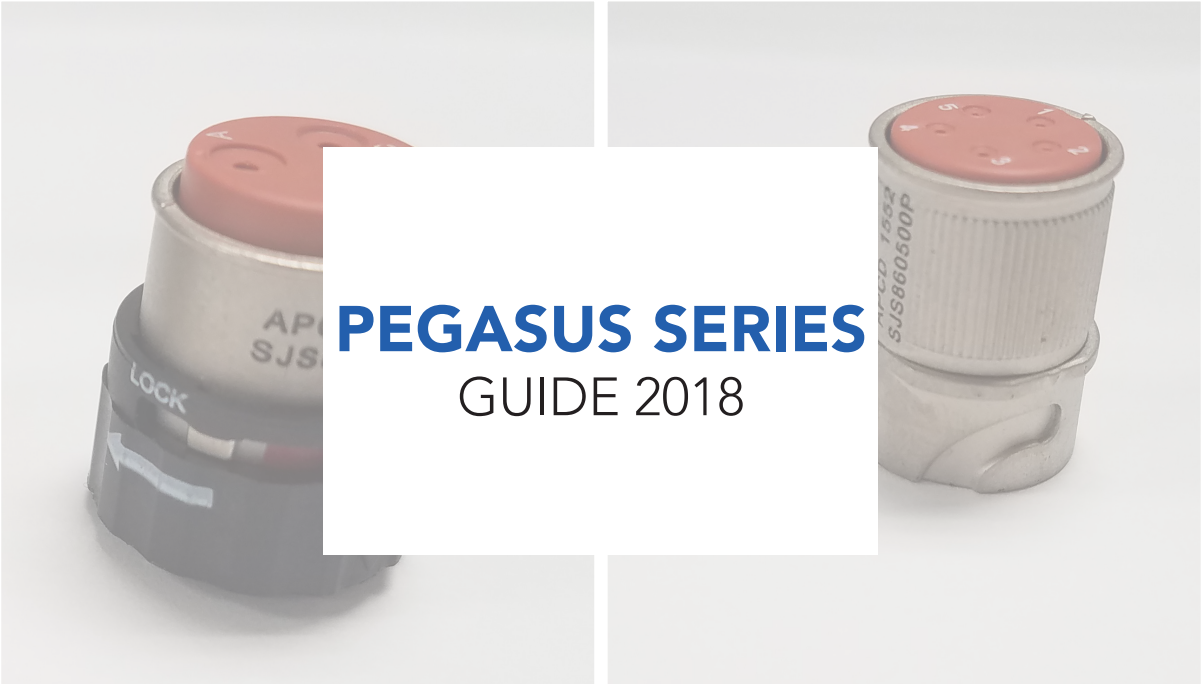


# Amphenol Pcd



# PEGASUS SERIES

---

## Description:

The Pegasus Series is Amphenol PCD's latest innovation in small, lightweight, rugged connectors. Designed for use in harsh environments, Pegasus builds on the successful Luminus Aerospace connector with the addition of EMI shielding. EMI shielding is provided by electroless copper and nickel plate, with a copper alloy spring finger gasket to ensure shell to shell conductivity. Tests show between 40db and 60db of attenuation, depending on frequency. This combination of light weight, small size, and EMI shielding makes Pegasus the ideal choice where protection against ambient noise transients, or suppression of emitted noise is required, and space and weight are at a premium.

---

## Features and Benefits:

Electroless Copper & Nickel plating- Shielding from ambient noise transients, suppression of emitted noise (DO-160G Section 21 categories B, L and M and DO-160G Section 20 categories S & T)

1/4 turn bayonet style connection- Simple and easy mate & unmate. Blind mate keying

Interfacial and Triple-Barrier Seal- Environmental sealing to IP67

Multiple Configurations-Inline, Square Flange, Oval Flange, Jamnut PCB, Circular Snap-In

Scoop-Proof- Prevents contacts from being bent or electrically shorted during mating

Stainless Steel Contact Retainers- High contact retention force over operating life cycle

---

## Typical Applications:

- Aviation & vehicle actuators
- Missile guidance & control systems
- Avionics sensors
- UAV control systems



# PEGASUS SERIES

---

## Shell Size

05 (max dia: 0.318)



2, size 22



3, size 22

11 (max dia: 0.700)



3, size 12



3, size 16

07 (max dia: 0.448)



6, size 22



8, size 22

14 (max dia: 0.875)



25, size 22

08 (max dia: 0.528)



4, size 16



5, size 22



9: 1, size 16; 8 size 22



9, size 22



3, size 16

10 (max dia: 0.630)



9: 4, size 16; 5 size 22



10: 4, size 16; 6 size 22

# PEGASUS SERIES

## Materials and Specifications

	Twist & Lock
Materials	Insulator Body: Ultem / Polyetherimide
	Grommet & Face Seal: Silicone Rubber
	Contact Retainer: Stainless Steel
	Plating: Nickel over Copper
Temperature Range	-65°C to 125°C
Temperature Life	500 hours @ 85°C
Insulation Resistance	5000 MΩ Min. @ 500 VDC
Dielectric Withstanding	1500 VAC, 60 Hz @ Sea Level, 1ma
	300 VAC, 60 Hz @ 70,000 ft, 2ma
Durability	Min 100 mating cycles; 250 typical
Altitude Immersion	5% salt solution, 75k feet
Temperature Cycling	5(1) Hour Cycles: -65°C to 125°C
Thermal Shock	-65°C to 200°C
Vibration	30G Sinusoidal; 43.96G Random
Shock	300G, 3msec, Half-Sine
Housing Electrical Conductivity	6 milliohm
EMI Shielding Effectiveness	65db @ 100Mhz 60db @ 200Mhz 55db @ 300Mhz 55db @ 400Mhz 45db @ 800Mhz 45db @ 1Ghz
Salt Spray	5% Salt Spray @ 95°C for 48 Hours
Humidity	10 Days @ 25°C to 65°C, 90% - 95% RH
Fluid Immersion	Lubricating Oil per Mil-Prf-7808
	Cleaning Compound per Mil-Prf-87937, Alkaline Base
	Isopropyl Alcohol & Mineral Spirit Solution
	Skydrol Hydraulic Fluid
	Hydraulic Fluids per MIL-PRF-83282 MIL-PRF-87257
	Ethylene Glycol
	Propylene Glycol
Aviation Jet A	
Seal Rating	IP67
Flammability	UL94, V0.
	DOTG section 26.6.2 & 26.6.3
	FAR Part 25 App F Part I
RoHS & REACH Compliance	Yes
Contact Insertion & Removal Force <small>(not to exceed)</small>	less than 3 lbs
	less than 5 lbs insert (sz22)
	less than 4lb remove (sz22)
	less than 12lbs insert (sz 16)
	less than 12lbs remove (sz 16)
Coupling Torque	greater than 10lbs
	less than 10lbs, sz 22
	less than 25lbs, sz 16
Coupling Torque	less than 5lbs

# PEGASUS SERIES

## Part Numbering (Twist & Lock)



# of Positions	Contact Size	Shell Size	Key	Color	Plug P/N	Inline Receptacle P/N	Circular Receptacle P/N	Square Receptacle PN	Jam Nut Stand-Off Receptacle PN	Oval Receptacle PN	Jam Nut Rear Mount Receptacle PN
2	22D	5	-	black	SJS830250P	SJS830270P	-	-	-	SJS502170P	SJS502190P
3	22D	5	-	black	SJS830210P	SJS830230P	-	-	-	SJS503170P	SJ503190P
3	20	7	-	white	SJS862300P	SJS862400P	-	SJS862450P	-	-	-
3	16	8	A	white	SJS840310P	SJS840300P	SJS840320P	SJS830730P	-	-	-
3	16	8	B	black	SJS840340P	SJS840350P	SJS840330P	SJS830130P	-	-	-
3	12	10	-		SJS003110P*	SJS003120P*	-	-	-	-	-
4	16	8	A	white	SJS840410P	SJS840400P	SJS840420P	SJS840740P	SJS840760P	-	SJS840790P
4	16	8	B	white	SJS840440P	SJS840450P	SJS840430P	-	-	-	-
4	20	7		black	SJS704110P	SJS704120P					
5	22D	8	-	white	SJS860510P	SJS860500P	SJS860520P	SJS805730P	-	-	-
5	22D	8	-	white	SJS870510P	-	SJS870520P	-	-	-	-
6	22D	7	-	black	SJS861700P	SJS861800P	-	-	SJS706160P	-	-
8	22D	7	A	black	SJS830100P	SJS830200P	-	SJS830220P	SJS708160P	SJS708190P	SJS708180P
8	22D	7	B	green	SJS830101P	SJS830201P	-	SJS830221P	-	-	-
8	22D	7	C	yellow	SJS830102P	SJS830202P	-	SJS830222P	-	-	-
9	22D	8	-	black	SJS862100P	SJS862200P	-	SJS809130P	-	-	-
12	22D	8	-	white	SJS861300P	SJS861400P	-	SJS812730P	SJS812760P	-	-
12	22D	11	A	black	SJS112110P	SJS112120P	-	-	SJS112160P	-	-
12	22D	11	B		SJS112210P	SJS112220P	-	-	SJS112260P	-	-
12	22D	11	C		SJS112310P	SJS112320P	-	-	SJS112360P	-	-
12	22D	11	D		SJS112410P	SJS112420P	-	-	SJS112460P	-	-
25	22D	14	A	black	SJS425110P	SJS425120P	-	-	SJS425160P	-	-
25	22D	14	B		SJS425210P	SJS425220P	-	-	SJS425260P	-	-
25	22D	14	C		SJS425310P	SJS425320P	-	-	SJS425360P	-	-
25	22D	14	D		SJS425410P	SJS425420P	-	-	SJS425460P	-	-
12	16	14	-		SJS412110P"	SJS412120P"	-	-	-	-	-
9	16 (1)	8	-	white	SJS860100P	SJS860200P	-	-	-	-	-
	22D (8)							-	-	-	-
9	16 (4)	10	-	white	SJS860910P	SJS860900P	-	SJS0AA730P	-	-	-
	22D (5)							-	-	-	-
10	16 (4)	10	-	white	SJS861100P*	SJS861200P*	SJS0AB730P	-	-	SJS0AB770P	-
	22D (6)							-	-	-	-
1	Quadrax	8	-		SJS801110P	SJS801120P	-	SJS801130P*	SJS801160P*	SJS801170P*	SJS80119P*
5	12 (3)	11	-	black	SJS1AE110P*	SJ1AE120P*	-	-	-	-	-
	22 (2)						-	-	-	-	-

\*Available at extended lead time.

# PEGASUS SERIES

## Part Numbering (Accessories)

											
Shell Size	Strain Relief Single	Strain Relief Single 90°	Strain Relief Single 45°	Double Strain Relief	Double Side Tape Mount Cradle	Screw Mount Cradle	Tube Mount Cradle	Single Side Tape Mount Cradle	Double Side Tape Mount Cradle	Dummy Flanges	Hard Protective Caps
5	SJSA55000	SJSA5100	SJSA5200	SJSA56000	SJS257000	SJS257100	SJSA5V000	SJS5AV010	SJS5AV020	-	SJSA5B000
7	SJS450350	SJSA75100	SJSA75200	SJSA76000	SJS883000	SJS450250	SJSA7V000	SJSA7V010	SJSA7V020	SJS830220D	SJSA7B000
8	SJSA85000	SJSA85100	SJSA85200	SJSA86000	SJS445000	SJS450100	SJSA8V000	SJSA8V010	SJSA8V020	-	SJSA8B000
10	SJSA05000	SJSA05100	SJSA05200	SJSA06000	SJS991000	-	SJSA0V000	SJSA0V010	SJSA0V020	SJS0AA730D	SJSA0B000

## Contact Matrix

Contact Size	Contact Style	Available		Contact P/N		QPL Part No. (Machined Only)	Contact Retention	Crimp Tensile Strength
		Push-Pull	Twist-Lock	Machined	Stamped & Formed			
12	Pin	Yes	Yes	CNP058365	SCP058365	M39029/58-365	.012" [0,30mm] @ 30lbf [133N]	100lbf [445N]
	Socket	No	Yes	CNS057359	SCS057359	M39029/57-359		
	Socket-L	Yes	No	CNS056353	n/a	M39029/56-353		
16	Pin	Yes	Yes	CNP058364	SCP058364	M39029/58-364	.012" [0,30mm] @ 25lbf [111N]	40lbf [180N]
	Socket	No	Yes	CNS057358	SCS057358	M39029/57-358		
	Socket-L	Yes	No	CNS056352	n/a	M39029/56-352		
20	Pin	Yes	Yes	CNP058363	SCP058363	M39029/58-363	.012" [0,30mm] @ 20lbf [90N]	20lbf [90N]
	Socket	No	Yes	CNS057357	SCS057357	M39029/57-357		
	Socket-L	Yes	No	CNS056351	n/a	M39029/56-351		
22D	Pin	No	Yes	CNP058360	n/a	M39029/58-360	.012" [0,30mm] @ 10lbf [44N]	10 lbf [45N]
	Socket	No	Yes	CNS057354	n/a	M39029/57-354		

Contact Size	Wire Accommodations				Tool Information		
	Size (AWG)	Max Current Rating (A)	ØD Range	Strip Length	Basic Tool	Positioner	Insertion/Removal Tool
12	12	23	.097 - .142" [2,46 - 3,61mm]	.209 - .240" [5,31 - 6,10mm]	M22520/1-01	M22520/1-04 (Yellow)	M81969/14-04
	14	17					
16	16	13	.065 - .109" [1,65 - 2,77mm]	.209 - .240" [5,31 - 6,10mm]	M22520/1-01	M22520/1-04 (Blue)	M81969/14-03
	18	10			M22520/7-01		
	20	7.5					
20	20	7.5	.040 - .083" [1,02 - 2,11mm]	.209 - .240" [5,31 - 6,10mm]	M22520/1-01	M22520/1-04 (Red)	M81969/14-11
	22	5			M22520/2-01		
	24	3			M22520/7-01	M22520/7-08	
22D	22	5	.030 - .054" [0,76 - 1,37mm]	.141 - .172" [3,58 - 4,37mm]	M22520/2-01	M22520/2-06	M81969/14-01
	24	3			M22520/7-01		
	26	2					
	28	1.5					

# AMPHENOL PCD PRODUCTS



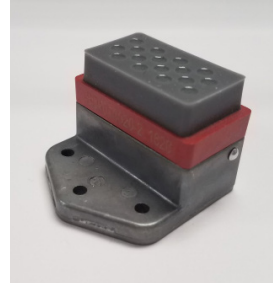
BACKSHELLS



CABLE SOLUTIONS



CIRCULAR



GROUND BLOCKS



JUNCTION MODULES



LUMINUS



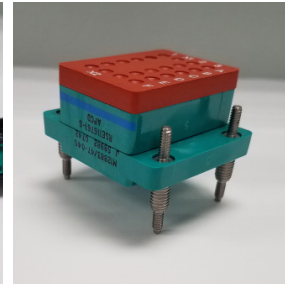
MILITARY AUDIO/POWER



PEGASUS SERIES



RECTANGULAR



RELAY SOCKETS



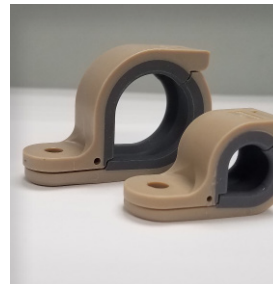
RUGGED SOLUTIONS



SIM



SOLARIS



SYSTEM ATTACHMENTS

## Amphenol Pcd

[www.amphenolpcd.com](http://www.amphenolpcd.com)

# Mouser Electronics

Authorized Distributor

Click to View Pricing, Inventory, Delivery & Lifecycle Information:

## Amphenol:

[SJS830270P](#) [SJS840320P](#) [SJS840310P](#) [SJS840300P](#) [SJS830220P](#) [SJS830200P](#) [SJS112162P](#) [SJS425160P](#)  
[SJS425162P](#) [SJS425110P](#) [SJS112160P](#) [SJS112120P](#) [SJS112110P](#) [SJS425120P](#) [SJS345000](#) [SJSAR7CAP](#)  
[SJSBP9CAP](#) [SJSAP3CAP](#) [SJSAP7CAP](#) [SJSAP5CAP](#) [SJSAR3CAP](#) [SJSAR5CAP](#) [SJSBR9CAP](#) [SJS800CAP](#)  
[SJS700CAP](#) [SJS830230P](#) [SJS840340P](#) [SJS860510P](#) [SJS830221P](#) [SJS830222P](#) [SJS840350P](#) [SJS840330P](#)  
[SJS860500P](#) [SJS860520P](#) [SJS830201P](#) [SJS830202P](#) [SJS861100P](#) [SJS861200P](#) [SJS861300P](#) [SJS861400P](#)  
[SJS862300P](#) [SJS862400P](#) [SJS860100P](#) [SJS860200P](#) [SJS862100P](#) [SJS862200P](#) [SJS870510P](#) [SJS870520P](#)  
[SJS861700P](#) [SJS861800P](#) [SJS830101P](#) [SJS830102P](#) [SJS08RCAPM](#) [SJS425311P](#) [SJS830271P](#) [SJS840311P](#)  
[SJS840341P](#) [SJS840321P](#) [SJS861301P](#) [SJS831200P](#) [SJS830231P](#) [SJS830220PD](#) [SJS830211P](#) [SJS840351P](#)  
[SJS861201P](#) [SJS861101P](#) [SJS831202P](#) [SJS840411P](#) [SJS861401P](#) [SJS861801P](#) [SJS708171P](#) [SJS0AA731P](#)  
[SJS502171P](#) [SJS830251P](#) [SJS831100P](#) [SJS831101P](#) [SJS831102P](#) [SJS831201P](#) [SJS831220P](#) [SJS831221P](#)  
[SJS831222P](#) [SJS840301P](#) [SJS860911P](#) [SJS870521P](#) [SJS425221P](#) [SJS425260P](#) [SJS425262P](#) [SJS860101P](#)  
[SJS112360P](#) [SJS870511P](#) [SJS112311P](#) [SJS708161P](#) [SJS112161P](#) [SJS708162P](#) [SJS425321P](#) [SJS425310P](#)  
[SJS706162P](#) [SJS112260P](#) [SJS425220P](#) [SJS112220P](#)