

THIS COPY IS PROVIDED ON A RESTRICTED BASIS AND IS NOT TO BE USED IN ANY WAY DETRIMENTAL TO THE INTERESTS OF PANDUIT CORP.

NOTES:

1. UL LISTED AND CSA CERTIFIED FOR:
 - A. 600 V MAX. VOLTAGE RATING
 - B. TEMPERATURE RATING OF INSULATION: 150° (221° F)
 - C. SOLID OR STRANDED, COPPER WIRE
2. MATERIAL:
 - A. STAMPING (22-18 & 16-14) - .03 [0.8] THK COPPER, TIN PLATED
 - B. STAMPING (12-10) - .04 [1.0] THK COPPER, TIN PLATED
 - C. BRAZED SEAM
 - D. HOUSING - NYLON
3. ALL DIMENSIONS ARE IN INCHES EXCEPT DIMENSIONS IN BRACKETS WHICH ARE MILLIMETERS
4. INSTALLATION TOOLS: CT-100, CT-1550, CT-1551
5.
 - * 12-10 AWG STRANDED AND 12 AWG SOLID COPPER WIRE WITH CT-1550 & CT-1551 TOOLS
 - ** 18-14 AWG WIRE RANGE WITH CT-1550 AND CT-1551 TOOLS
 - *** 22-16 AWG WIRE RANGE WITH CT-1550 AND CT-1551 TOOLS
6. WIRE STRIP LENGTH:

BSN18 & BSN14	-	9/32	+	1/32	[7.1	+	0.8]	-	0	-	0
BSN10	-	9/32	+	1/32	[7.1	+	0.8]	-	0	-	0
7. SEE www.PANDUIT.COM FOR PACKAGE QUANTITIES INDICATED BY PART NUMBER SUFFIX

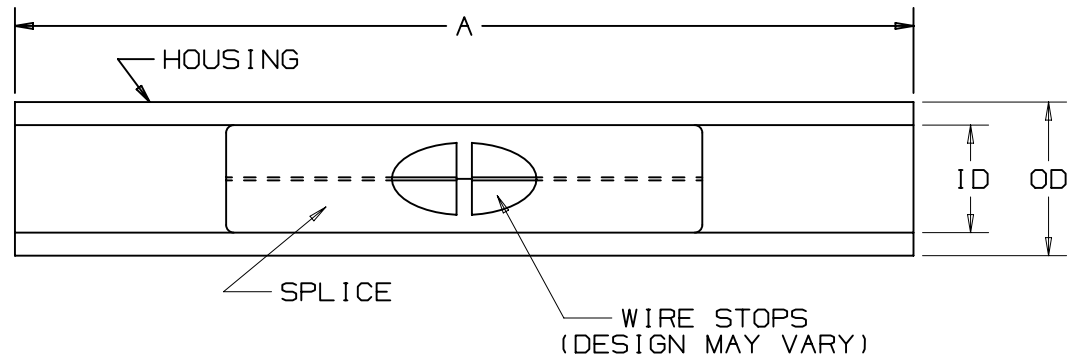
PANDUIT PART NUMBER	WIRE RANGE (AWG)	COLOR CODE	DIMENSIONS in.			
			MAX WIRE INSUL DIA	A $\pm .020$ (.51)	ID $\pm .020$ (.51)	OD $\pm .020$ (.51)
BSN18	***22-18	RED	.115 (2,92)	1.15 (29,2)	0.13 (3,3)	0.20 (5,1)
BSN14	**16-14	BLUE	.148 (3,76)	1.15 (29,2)	0.15 (3,9)	0.20 (5,1)
BSN10	*12-10	YELLOW	.210 (5,33)	1.14 (29,0)	0.21 (5,3)	0.27 (6,8)



LISTED
587H
E52164



CERTIFIED
LR31212



REV	DATE	BY	CHK	APR	DESCRIPTION	ECN	TITLE	ITEM REVISION NAME	DATASET FILE NAME	MATERIAL:	DRAWING NUMBER:
13	2/15	TMR	TMR	RGB	ADDED NOTE ON BRAZED SEAM AND PACKAGING REVISED TITLE BLOCK	N41182BA-DC	NYLON INSULATED BUTT SPLICES CUSTOMER DRAWING	N41182BA/13	N41182BA/13		A41182
							UNLESS OTHERWISE SPECIFIED, DIMENSIONAL TOLERANCES ARE: IN [mm]				
								THIRD ANGLE PROJECTION			
							DRAWN BY: FES DATE: _____ CHK: RLS SCALE: N/A			SHT 1 OF 1	

D10100DA/16

Mouser Electronics

Authorized Distributor

Click to View Pricing, Inventory, Delivery & Lifecycle Information:

[Panduit:](#)

[BSN10-D](#) [BSN18-C](#) [BSN14-M](#) [BSN18-E](#) [BSN10-E](#) [BSN14-E](#)