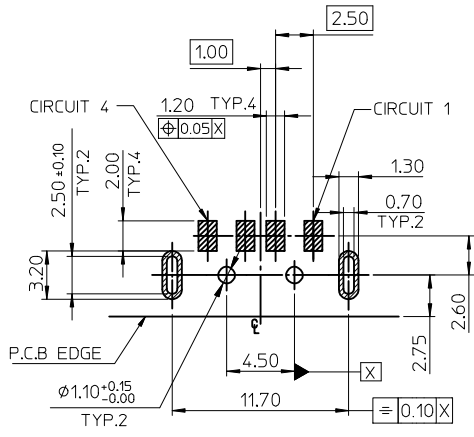
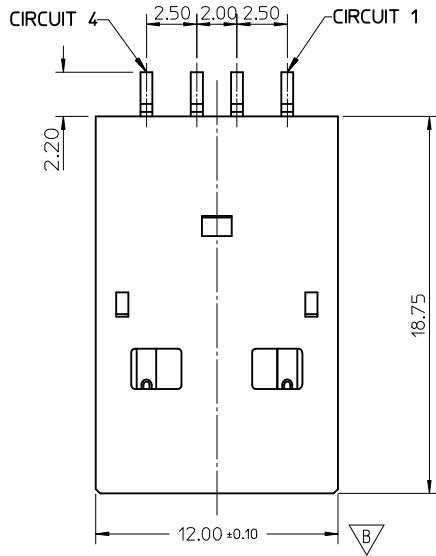
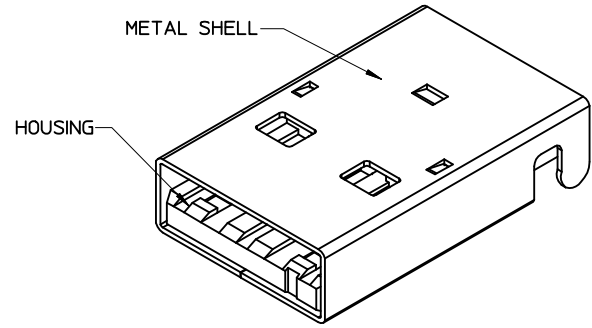


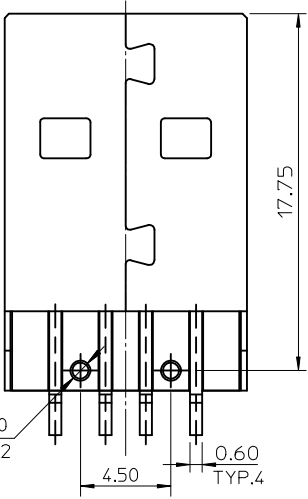
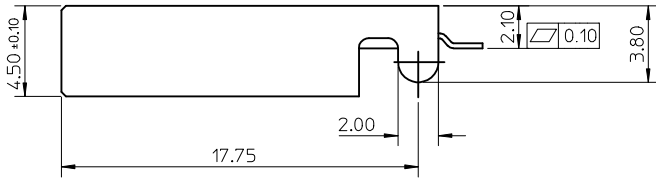
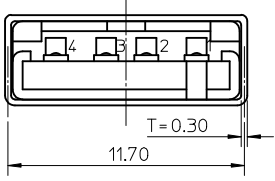
10 9 8 7 6 5 4 3 2 1



RECOMMEND P.C.B LAYOUT
GENERAL TOLERANCE=0.05



- NOTES:
- MATERIAL:
HOUSING: LCP, GLASS FIBER FILLED, UL94V-0, COLOR: BLACK.
SHELL: COLD ROLLED STEEL.
TERMINAL: BRASS.
 - FINISH:
TERMINAL:
SELECTIVE GOLD(Au) IN CONTACT AREA, THICKNESS=30 MICROINCH MINIMUM;
SELECTIVE TIN(Sn) IN SOLDER TAIL AREA, THICKNESS=120 MICROINCH MINIMUM;
NICKEL(Ni) OVERALL.
METAL SHELL:
NICKEL(Ni) OVERALL;
UNDER PLATED: COPPER(Cu) OVERALL, THICKNESS=50 MICROINCH MINIMUM.
 - RECOMMENDED PCB THICKNESS: 1.6mmY±0.05.
 - PRODUCT SPECIFICATION REFERS TO PS-48037-001.
 - PACKAGE SPECIFICATION REFERS TO PK-48037-210.
 - TEST SUMMARY REFERS TO TS-48037-001.
 - COPLANARITY TO BE 0.10mm MAX.
 - LEAD FREE AND RoHS COMPLIANT PRODUCT.
 - DATE CODE:
X X X X X
YEAR WEEK DAY



REVISED IEC NO: SH2013-0322 DRW: FANG05 2013/04/05 CH: KD APPR: RZHIANG 2013/05/17	QUALITY SYMBOLS	GENERAL TOLERANCES (UNLESS SPECIFIED)	DIMENSION STYLE	SCALE	DESIGN UNITS	THIRD ANGLE PROJECTION	
	▽=0 ∇=0	mm INCH	MM ONLY	3:1	METRIC		
		4 PLACES ± --- ± --- 3 PLACES ± --- ± --- 2 PLACES ± 0.25 ± --- 1 PLACE ± 0.25 ± ---	DRAWN BY DATE TOM 2006/02/15	TITLE USB A TYPE PLUG SMT TYPE STR SHELL LEG(3.8MM) (LEAD-FREE VERSION)			
		ANGULAR ± 3 °	CHECKED BY DATE ROGER TSAI 2006/02/15	MOLEX MOLEX INCORPORATED			
		DRAFT WHERE APPLICABLE MUST REMAIN WITHIN DIMENSIONS	APPROVED BY DATE ALLEN LIN 2006/02/15	MATERIAL NO. 48037-2200	DOCUMENT NO. SD-48037-004	SHEET NO. 1 OF 1	
			SIZE A3	THIS DRAWING CONTAINS INFORMATION THAT IS PROPRIETARY TO MOLEX INCORPORATED AND SHOULD NOT BE USED WITHOUT WRITTEN PERMISSION			

9 8 7 6 5 4 3 2 1