

# D-SUB HIGH DENSITY

Solder pin – Angled – .350" / 7.98 mm – Precision machined contacts – Plastic bracket

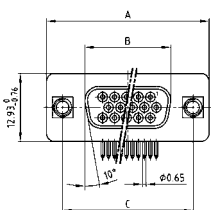


RoHS compliant – CSA listed, File No.: LR 115000-1 – UL listed, File No.: E202784

## DESCRIPTION

- Mounting styles:
  - with mounting and grounding strap, 4-40 UNC or M3 threaded insert
  - with mounting and grounding strap, 4-40 UNC or M3 front spacer
  - with mounting bracket, PCB clip and 4-40 UNC or M3 threaded insert
  - with mounting bracket, PCB clip and 4-40 UNC or M3 front spacer
- Quality class 3 (also available in quality class 1)
- Shell: Steel tin plated (brass tin plated or stainless steel available on request)

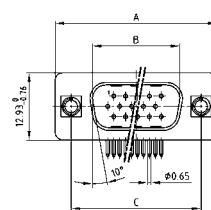
## SOCKET CONNECTOR



No. of pos.	A -0.76	B -0.25	C
15	31.19	16.46	25.00 ±0.12
26	39.52	24.79	33.30 <sup>+0.15</sup> / <sub>-0.10</sub>
44	53.42	38.50	47.04 ±0.13
62	69.70	54.96	63.50 ±0.13

PCB layout: Kat1iU1A

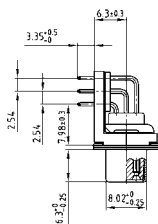
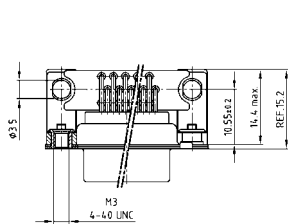
## PLUG CONNECTOR



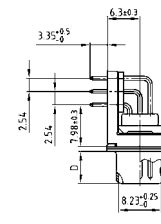
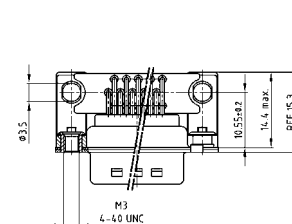
No. of pos.	A -0.76	B +0.25	C	D -0.3
15	31.19	16.79	25.00 ±0.12	6.12
26	39.52	25.12	33.30 <sup>+0.15</sup> / <sub>-0.10</sub>	6.12
44	53.42	38.84	47.04 ±0.13	5.99
62	69.70	55.30	63.50 ±0.13	5.99

PCB layout: Kat1iU2A

Mounting style: Grounding strap, threaded insert



Mounting style: Grounding strap, threaded insert



## ORDER DATA

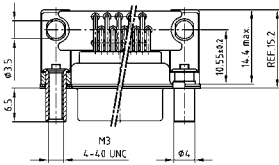
SOCKET CONNECTOR		
No. of pos.	Mounting style	Part Number
15	Grounding strap / 4-40 UNC Threaded insert	164 A 18019 X
26	Grounding strap / 4-40 UNC Threaded insert	164 A 18029 X
44	Grounding strap / 4-40 UNC Threaded insert	164 A 18039 X
62	Grounding strap / 4-40 UNC Threaded insert	164 A 18049 X
15	Grounding strap / M3 Threaded insert	164 A 18059 X
26	Grounding strap / M3 Threaded insert	164 A 18069 X
44	Grounding strap / M3 Threaded insert	164 A 18079 X
62	Grounding strap / M3 Threaded insert	164 A 18089 X

PLUG CONNECTOR		
No. of pos.	Mounting style	Part Number
15	Grounding strap / 4-40 UNC Threaded insert	163 A 17609 X
26	Grounding strap / 4-40 UNC Threaded insert	163 A 17619 X
44	Grounding strap / 4-40 UNC Threaded insert	163 A 17629 X
62	Grounding strap / 4-40 UNC Threaded insert	163 A 17639 X
15	Grounding strap / M3 Threaded insert	163 A 17649 X
26	Grounding strap / M3 Threaded insert	163 A 17659 X
44	Grounding strap / M3 Threaded insert	163 A 17669 X
62	Grounding strap / M3 Threaded insert	163 A 17679 X

# D-SUB HIGH DENSITY – MOUNTING STYLES

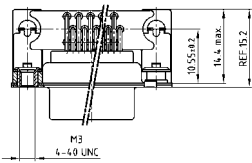
Solder pin – Angled – .350" / 7.98 mm – Precision machined contacts – Plastic bracket

**ORDER DATA**



SOCKET CONNECTOR		
No. of pos.	Mounting style	Part Number
15	Grounding strap / 4-40 UNC Front spacer	164 A 18099 X
26	Grounding strap / 4-40 UNC Front spacer	164 A 18109 X
44	Grounding strap / 4-40 UNC Front spacer	164 A 18119 X
62	Grounding strap / 4-40 UNC Front spacer	164 A 18129 X
15	Grounding strap / M3 Front spacer	164 A 18139 X
26	Grounding strap / M3 Front spacer	164 A 18149 X
44	Grounding strap / M3 Front spacer	164 A 18159 X
62	Grounding strap / M3 Front spacer	164 A 18169 X

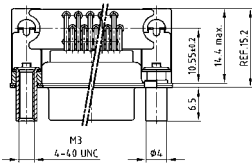
PLUG CONNECTOR		
No. of pos.	Mounting style	Part Number
15	Grounding strap / 4-40 UNC Front spacer	163 A 17689 X
26	Grounding strap / 4-40 UNC Front spacer	163 A 17699 X
44	Grounding strap / 4-40 UNC Front spacer	163 A 17709 X
62	Grounding strap / 4-40 UNC Front spacer	163 A 17719 X
15	Grounding strap / M3 Front spacer	163 A 17729 X
26	Grounding strap / M3 Front spacer	163 A 17739 X
44	Grounding strap / M3 Front spacer	163 A 17749 X
62	Grounding strap / M3 Front spacer	163 A 17759 X



SOCKET CONNECTOR		
No. of pos.	Mounting style	Part Number
15	PCB clip / 4-40 UNC Threaded insert	164 A 20929 X
26	PCB clip / 4-40 UNC Threaded insert	164 A 20939 X
44	PCB clip / 4-40 UNC Threaded insert	164 A 20949 X
62	PCB clip / 4-40 UNC Threaded insert	164 A 20959 X
15	PCB clip / M3 Threaded insert	164 A 20969 X
26	PCB clip / M3 Threaded insert	164 A 20979 X
44	PCB clip / M3 Threaded insert	164 A 20989 X
62	PCB clip / M3 Threaded insert	164 A 20999 X

PLUG CONNECTOR		
No. of pos.	Mounting style	Part Number
15	PCB clip / 4-40 UNC Threaded insert	163 A 20489 X
26	PCB clip / 4-40 UNC Threaded insert	163 A 20499 X
44	PCB clip / 4-40 UNC Threaded insert	163 A 20509 X
62	PCB clip / 4-40 UNC Threaded insert	163 A 20519 X
15	PCB clip / M3 Threaded insert	163 A 20529 X
26	PCB clip / M3 Threaded insert	163 A 20539 X
44	PCB clip / M3 Threaded insert	163 A 20549 X
62	PCB clip / M3 Threaded insert	163 A 20559 X

PCB clip .122" / 3.1 ± .004" / 0.10 mm hole diameter and .063" / 1.6 mm circuit board thickness



SOCKET CONNECTOR		
No. of pos.	Mounting style	Part Number
15	PCB clip / 4-40 UNC Front spacer	164 A 21009 X
26	PCB clip / 4-40 UNC Front spacer	164 A 21019 X
44	PCB clip / 4-40 UNC Front spacer	164 A 21029 X
62	PCB clip / 4-40 UNC Front spacer	164 A 21039 X
15	PCB clip / M3 Front spacer	164 A 21049 X
26	PCB clip / M3 Front spacer	164 A 21059 X
44	PCB clip / M3 Front spacer	164 A 21069 X
62	PCB clip / M3 Front spacer	164 A 21079 X

PLUG CONNECTOR		
No. of pos.	Mounting style	Part Number
15	PCB clip / 4-40 UNC Front spacer	163 A 20569 X
26	PCB clip / 4-40 UNC Front spacer	163 A 20579 X
44	PCB clip / 4-40 UNC Front spacer	163 A 20589 X
62	PCB clip / 4-40 UNC Front spacer	163 A 20599 X
15	PCB clip / M3 Front spacer	163 A 20609 X
26	PCB clip / M3 Front spacer	163 A 20619 X
44	PCB clip / M3 Front spacer	163 A 20629 X
62	PCB clip / M3 Front spacer	163 A 20639 X

PCB clip .122" / 3.1 ± .004" / 0.10 mm hole diameter and .063" / 1.6 mm circuit board thickness

PCB layout: Kat1iU1A

PCB layout: Kat1iU2A

# Mouser Electronics

Authorized Distributor

Click to View Pricing, Inventory, Delivery & Lifecycle Information:

## CONEC:

[163A17699X](#) [164A18099X](#) [164A20929X](#) [164A18059X](#) [164A18039X](#) [164A18109X](#) [164A18119X](#) [163A20519X](#)  
[164A18069X](#) [164A18079X](#) [163A20539X](#) [164A18019X](#) [164A21049X](#) [164A21009X](#) [164A20979X](#) [164A20989X](#)  
[163A20589X](#) [164A20939X](#) [164A20949X](#) [164A21019X](#) [164A21029X](#) [163A17709X](#) [163A17619X](#) [163A17629X](#)  
[163A17609X](#) [163A17689X](#) [163A17639X](#) [163A17719X](#)