

MODULAR JACKS AND PLUGS: GMX-SMT2 Series

Surface Mount Modular Jack

Product Features

Low Profile Design Suitable for PC Add-On Board Applications
 Available in 4, 6, 8, and 10 Position Housings
 Available Fully Shielded for EMI/RFI Protection
 CSA/NRTL Certified File No. LR78160
 UL File No. E134345

Performance Specifications

Materials and Finish

Housing Material

High Temperature Thermoplastic, Reflow Compatible,
 UL 94V-0 Rated, Black Color

Shield Material

Copper Alloy, Nickel Plated

Contact Material

Phosphor Bronze

Electrical Characteristics

Insulation Resistance

500 Megohms Min.

Dielectric Withstanding Voltage

1000V RMS, 60Hz

Contact Resistance

20 milliohms Max.

Current Rating

1.0A

Voltage Rating

125V DC

Operating Temperature

-40°C to +85°C

Durability

1000 Mating Cycles Min.

2D Drawing	IGES	STEP	3D PDF
Solder Profile	CofC RoHS Compliant	CofC REACH Compliant	UL Plastic File
Certificate of Origin	Check Stock	Request a Sample	Send Us An Email

Generated Part Number

Part Number Builder

<input type="text"/>	-	<input type="text"/>	<input type="text"/>	<input type="text"/>	<input type="text"/>
Series		Shield Option	No. of Positions & Contacts	Plating Options	Packaging Options

Series

GMX-SMT2 - Surface Mount Right Angle Modular Jack with Post

Shield Options

- N - Non-Shielded
- S - Shielded with Thru Hole Shield Pins
- S2 - Shielded with SMT Shield Tabs (only with 66, 88 and 1010)
- S6 - Shielded with Top and Side Grounding Tabs, SMT Shield Pins (Available only with 8 Positions)
- S7 - Fully Shielded with Top and Side Grounding Tabs, Thru Hole Shield (Available only with 8 Positions)

Number of Positions / Contacts

- 44 - 4 Positions / 4 Contacts (Only N Option)
- 64 - 6 Positions / 4 Contacts
- 66 - 6 Positions / 6 Contacts
- 88 - 8 Positions / 8 Contacts
- 1010 - 10 Positions / 10 Contacts

Plating Option

- Blank - Gold Flash
- 50 - 50µ" Gold Plating

Packaging Option

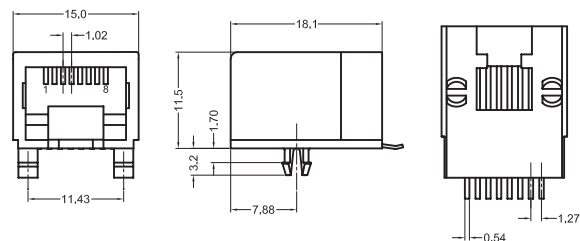
- Blank - Bulk
- TR - Tape & Reel

Contact Kycon for Other Options

GMX-SMT2 Series

Dimensions in mm

GMX-SMT2-N-88



Mouser Electronics

Authorized Distributor

Click to View Pricing, Inventory, Delivery & Lifecycle Information:

Kycon:

[GMX-SMT2-S2-1010](#) [GMX-SMT2-S2-101050](#) [GMX-SMT2-S6-88](#) [GMX-SMT2-N-44-50](#) [GMX-SMT2-S-1010-50](#)
[GMX-SMT2-S-1010](#) [GMX-SMT2-N-88-50](#) [GMX-SMT2-N-88-TR](#) [GMX-SMT2-S-88-50](#) [GMX-SMT2-S2-1010TR](#) [GMX-](#)
[SMT2-N-101050](#) [GMX-SMT2-N-1010](#) [GMX-SMT2-S7-88-50](#) [GMX-SMT2-S2-88-50](#) [GMX-SMT2-S2-88-TR](#) [GMX-](#)
[SMT2-S2-8850TR](#) [GMX-SMT2-S-66-50](#) [GMX-SMT2-S-64-50](#) [GMX-SMT2-S2-88](#) [GMX-SMT2-N-64-50](#) [GMX-SMT2-S-](#)
[88](#) [GMX-SMT2-S-64](#) [GMX-SMT2-S-66](#) [GMX-SMT2-N-66-50](#) [GMX-SMT2-S7-88](#) [GMX-SMT2-N-64](#) [GMX-SMT2-N-66](#)
[GMX-SMT2-N-88](#) [GMX-SMT2-N-44](#) [GMX-S3-66](#) [GMX-SMT2-S6-88-50](#) [GMX-SMT2S6101050TR](#) [GMX-SMT2-S7-](#)
[8850TR](#) [GMX-SMT2-S2-66](#) [GMX-SMT2-S6-1010TR](#) [GMX-SMT2-S-88-TR](#) [GMX-SMT2-S-8850TR](#) [GMX-SMT2-S-66-](#)
[TR](#) [GMX-SMT2-S6-1010](#) [GMX-SMT2N1010TR](#) [GMX-SMT2-S6-8850TR](#) [GMX-SMT2-N-66-TR](#) [GMX-SMT2-N-64-TR](#)
[GMX-SMT2-N-88-50TR](#) [GMX-SMT2N101050TR](#) [GMX-SMT2-S7-88-TR](#) [GMX-SMT2-N-66-50TR](#) [GMX-SMT2-](#)
[S101050TR](#) [GMX-SMT2-S6-88-TR](#) [GMX-SMT2-S6-101050](#) [GMX-SMT2-S-1010TR](#) [GMX-SMT2-N-44-50TR](#) [GMX-](#)
[SMT2S2101050TR](#)