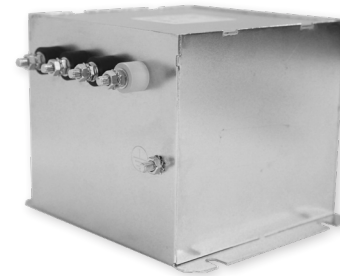


RP415

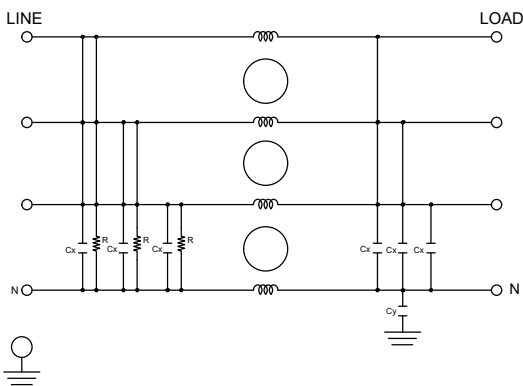
3-PHASE WYE COMPACT SINGLE STAGE POWER LINE FILTER

FEATURES

- » Rated currents include **8A, 16A, 25A, 36A, 64A, 80A, 120A, and 160A**
- » Single Stage Line Filter
- » Available with **W** (wires), **S** (studs) and **C** (connectors) option
- » Compact Design
- » Agency Approved to UL1283 / 60929, CSA C22.2, EN 60939
- » Y-cap value can be adjusted to fit specification

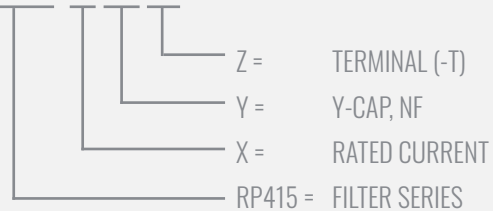


ELECTRICAL SCHEMATIC



HOW TO ORDER

RP415- X - Y - Z



NOTE: USE ANY COMBINATION OF -X (AMPS) WITH ANY -Y RATINGS

E.G. **RP415-8-100-S** (8AMPS WITH 100 NF YCAP)

For **X, Y** and **Z** options see product specification table.

SPECIFICATIONS

OPERATING FREQUENCY	50/60Hz
USABLE FREQUENCY	DC - 400 Hz
MAX. OPERATING VOLTAGE*	480V +10%
AMBIENT TEMPERATURE	-25 TO 50°C
CLIMATIC CATEGORY	25/100/21
TERMINALS (-T)	WIRE LEADS
	STUDS 8-36A(M5)
	64-80A (M6)
	120-160A(M10)
	CONNECTORS
TYP. WEIGHT, LBS (KG)	3.9 - 16.0 (1.8 - 7.3)

TYPICAL LEAKAGE CURRENT

@ 480 VAC 60 Hz 0 - 20.0 mA Max.

HIPOT RATINGS

LINE TO GROUND 3500 VDC

TYPICAL APPLICATIONS

- ✓ Power conversion systems
- ✓ Processing equipment
- ✓ Alternative energy equipment (EV charging & solar)
- ✓ Factory Machinery

RP415

3-PHASE WYE COMPACT SINGLE STAGE POWER LINE FILTER

MODEL NO.	RATED CURRENT, A @ 40° C	Y-CAP, nF	LEAKAGE CURRENT mA, @ 480V AC/60 Hz	TERMINAL OPTIONS			MAX. DIMENSIONS" (MM)		
				(W) INPUT/ OUTPUT	(S) INPUT/ OUTPUT	(C) INPUT/ OUTPUT	WIDTH	(LENGTH)	HEIGHT
RP415-8-0-S	8	0	-		✓		5.63"(143)	6.69"(170)	3.15"(80)
RP415-8-0-W	8	0	-	✓			*	*	*
RP415-8-10-S	8	10	0.10		✓		5.63"(143)	6.69"(170)	3.15"(80)
RP415-8-10-W	8	10	0.10	✓			*	*	*
RP415-8-100-S	8	100	1.00		✓		5.63"(143)	6.69"(170)	3.15"(80)
RP415-8-100-W	8	100	1.00	✓			*	*	*
RP415-8-1000-S	8	1000	10.00		✓		5.63"(143)	6.69"(170)	3.15"(80)
RP415-8-1000-W	8	1000	10.00	✓			*	*	*
RP415-8-2000-S	8	2000	20.00		✓		5.63"(143)	6.69"(170)	3.15"(80)
RP415-8-2000-W	8	2000	20.00	✓			*	*	*
RP415-16-0-S	16	0	-		✓		5.63"(143)	6.69"(170)	3.15"(80)
RP415-16-0-W	16	0	-	✓			*	*	*
RP415-16-10-S	16	10	0.10		✓		5.63"(143)	6.69"(170)	3.15"(80)
RP415-16-10-W	16	10	0.10	✓			*	*	*
RP415-16-100-S	16	100	1.00		✓		5.63"(143)	6.69"(170)	3.15"(80)
RP415-16-100-W	16	100	1.00	✓			*	*	*
RP415-16-1000-S	16	1000	10.00		✓		5.63"(143)	6.69"(170)	3.15"(80)
RP415-16-1000-W	16	1000	10.00	✓			*	*	*
RP415-16-2000-S	16	2000	20.00		✓		5.63"(143)	6.69"(170)	3.15"(80)
RP415-16-2000-W	16	2000	20.00	✓			*	*	*
RP415-25-0-C	25	0	-			✓	*	*	*
RP415-25-0-S	25	0	-		✓		6.02"(153)	7.09"(180)	4.53"(115)
RP415-25-0-W	25	0	-	✓			*	*	*
RP415-25-10-C	25	10	0.10			✓	*	*	*
RP415-25-10-S	25	10	0.10		✓		6.02"(153)	7.09"(180)	4.53"(115)
RP415-25-10-W	25	10	0.10	✓			*	*	*
RP415-25-100-C	25	100	1.00			✓	*	*	*
RP415-25-100-S	25	100	1.00		✓		6.02"(153)	7.09"(180)	4.53"(115)
RP415-25-100-W	25	100	1.00	✓			*	*	*
RP415-25-1000-C	25	1000	10.00			✓	*	*	*
RP415-25-1000-S	25	1000	10.00		✓		6.02"(153)	7.09"(180)	4.53"(115)
RP415-25-1000-W	25	1000	10.00	✓			*	*	*
RP415-25-2000-C	25	2000	20.00			✓	*	*	*
RP415-25-2000-S	25	2000	20.00		✓		6.02"(153)	7.09"(180)	4.53"(115)

ADDITIONAL MODEL NO. >>

RP415

3-PHASE WYE COMPACT SINGLE STAGE POWER LINE FILTER

MODEL NO.	RATED CURRENT, A @ 40° C	Y-CAP, nF	LEAKAGE CURRENT mA, @ 480V AC/60 Hz	TERMINAL OPTIONS			MAX. DIMENSIONS" (MM)		
				(W) INPUT/ OUTPUT	(S) INPUT/ OUTPUT	(C) INPUT/ OUTPUT	WIDTH	(LENGTH)	HEIGHT
RP415-25-2000-W	25	2000	20.00	✓			*	*	*
RP415-36-0-C	36	0	-			✓	*	*	*
RP415-36-0-S	36	0	-		✓		6.02"(153)	7.09"(180)	4.53"(115)
RP415-36-0-W	36	0	-	✓			*	*	*
RP415-36-10-C	36	10	0.10			✓	*	*	*
RP415-36-10-S	36	10	0.10		✓		6.02"(153)	7.09"(180)	4.53"(115)
RP415-36-10-W	36	10	0.10	✓			*	*	*
RP415-36-100-C	36	100	1.00			✓	*	*	*
RP415-36-100-S	36	100	1.00		✓		6.02"(153)	7.09"(180)	4.53"(115)
RP415-36-100-W	36	100	1.00	✓			*	*	*
RP415-36-1000-C	36	1000	10.00			✓	*	*	*
RP415-36-1000-S	36	1000	10.00		✓		6.02"(153)	7.09"(180)	4.53"(115)
RP415-36-1000-W	36	1000	10.00	✓			*	*	*
RP415-36-2000-C	36	2000	20.00			✓	*	*	*
RP415-36-2000-S	36	2000	20.00		✓		6.02"(153)	7.09"(180)	4.53"(115)
RP415-36-2000-W	36	2000	20.00	✓			*	*	*
RP415-64-0-C	64	0	-			✓	*	*	*
RP415-64-0-S	64	0	-		✓		6.02"(153)	7.91"(201)	4.92"(125)
RP415-64-0-W	64	0	-	✓			*	*	*
RP415-64-10-C	64	10	0.10			✓	*	*	*
RP415-64-10-S	64	10	0.10		✓		6.02"(153)	7.91"(201)	4.92"(125)
RP415-64-10-W	64	10	0.10	✓			*	*	*
RP415-64-100-C	64	100	1.00			✓	*	*	*
RP415-64-100-S	64	100	1.00		✓		6.02"(153)	7.91"(201)	4.92"(125)
RP415-64-100-W	64	100	1.00	✓			*	*	*
RP415-64-1000-C	64	1000	10.00			✓	*	*	*
RP415-64-1000-S	64	1000	10.00		✓		6.02"(153)	7.91"(201)	4.92"(125)
RP415-64-1000-W	64	1000	10.00	✓			*	*	*
RP415-64-2000-C	64	2000	20.00			✓	*	*	*
RP415-64-2000-S	64	2000	20.00		✓		6.02"(153)	7.91"(201)	4.92"(125)
RP415-64-2000-W	64	2000	20.00	✓			*	*	*
RP415-80-0-C	80	0	-			✓	*	*	*
RP415-80-0-S	80	0	-		✓		6.69"(170)	8.66"(220)	4.33"(110)
RP415-80-0-W	80	0	-	✓			*	*	*

ADDITIONAL MODEL NO. >>

RP415

3-PHASE WYE COMPACT SINGLE STAGE POWER LINE FILTER

MODEL NO.	RATED CURRENT, A @ 40° C	Y-CAP, nF	LEAKAGE CURRENT mA, @ 480V AC/60 Hz	TERMINAL OPTIONS			MAX. DIMENSIONS" (MM)		
				(W) INPUT/ OUTPUT	(S) INPUT/ OUTPUT	(C) INPUT/ OUTPUT	WIDTH	(LENGTH)	HEIGHT
RP415-80-10-C	80	10	0.10			✓	*	*	*
RP415-80-10-S	80	10	0.10		✓		6.69"(170)	8.66"(220)	4.33"(110)
RP415-80-10-W	80	10	0.10	✓			*	*	*
RP415-80-100-C	80	100	1.00			✓	*	*	*
RP415-80-100-S	80	100	1.00		✓		6.69"(170)	8.66"(220)	4.33"(110)
RP415-80-100-W	80	100	1.00	✓			*	*	*
RP415-80-1000-C	80	1000	10.00			✓	*	*	*
RP415-80-1000-S	80	1000	10.00		✓		6.69"(170)	8.66"(220)	4.33"(110)
RP415-80-1000-W	80	1000	10.00	✓			*	*	*
RP415-80-2000-C	80	2000	20.00			✓	*	*	*
RP415-80-2000-S	80	2000	20.00		✓		6.69"(170)	8.66"(220)	4.33"(110)
RP415-80-2000-W	80	2000	20.00	✓			*	*	*
RP415-120-0-C	120	0	-			✓	*	*	*
RP415-120-0-S	120	0	-		✓		6.69"(170)	9.80"(249)	5.12"(130)
RP415-120-0-W	120	0	-	✓			*	*	*
RP415-120-10-C	120	10	0.10			✓	*	*	*
RP415-120-10-S	120	10	0.10		✓		6.69"(170)	9.80"(249)	5.12"(130)
RP415-120-10-W	120	10	0.10	✓			*	*	*
RP415-120-100-C	120	100	1.00			✓	*	*	*
RP415-120-100-S	120	100	1.00		✓		6.69"(170)	9.80"(249)	5.12"(130)
RP415-120-100-W	120	100	1.00	✓			*	*	*
RP415-120-1000-C	120	1000	10.00			✓	*	*	*
RP415-120-1000-S	120	1000	10.00		✓		6.69"(170)	9.80"(249)	5.12"(130)
RP415-120-1000-W	120	1000	10.00	✓			*	*	*
RP415-120-2000-C	120	2000	20.00			✓	*	*	*
RP415-120-2000-S	120	2000	20.00		✓		6.69"(170)	9.80"(249)	5.12"(130)
RP415-120-2000-W	120	2000	20.00	✓			*	*	*
RP415-160-0-C	160	0	-			✓	*	*	*
RP415-160-0-S	160	0	-		✓		6.69"(170)	10.87"(276)	5.12"(130)
RP415-160-0-W	160	0	-	✓			*	*	*
RP415-160-10-C	160	10	0.10			✓	*	*	*
RP415-160-10-S	160	10	0.10		✓		6.69"(170)	10.87"(276)	5.12"(130)
RP415-160-10-W	160	10	0.10	✓			*	*	*
RP415-160-100-C	160	100	1.00			✓	*	*	*

ADDITIONAL MODEL NO. >>

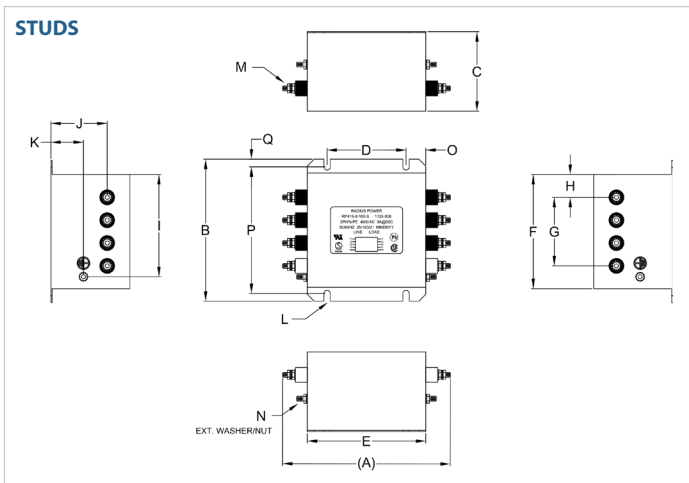
RP415

3-PHASE WYE COMPACT SINGLE STAGE POWER LINE FILTER

MODEL NO.	RATED CURRENT, A @ 40° C	Y-CAP, nF	LEAKAGE CURRENT mA, @ 480V AC/60 Hz	TERMINAL OPTIONS			MAX. DIMENSIONS" (MM)		
				(W) INPUT/OUTPUT	(S) INPUT/OUTPUT	(C) INPUT/OUTPUT	WIDTH	(LENGTH)	HEIGHT
RP415-160-100-S	160	100	1.00		✓		6.69"(170)	10.87"(276)	5.12"(130)
RP415-160-100-W	160	100	1.00	✓			*	*	*
RP415-160-1000-C	160	1000	10.00			✓	*	*	*
RP415-160-1000-S	160	1000	10.00		✓		6.69"(170)	10.87"(276)	5.12"(130)
RP415-160-1000-W	160	1000	10.00	✓			*	*	*
RP415-160-2000-C	160	2000	20.00			✓	*	*	*
RP415-160-2000-S	160	2000	20.00		✓		6.69"(170)	10.87"(276)	5.12"(130)
RP415-160-2000-W	160	2000	20.00	✓			*	*	*

*Contact factory for dimensions.

RP415 MECHANICAL OUTLINES (MM)



SERIES	(A)	B	C	D	E	F	G	H	I	J	K	L	M	N	O	P	Q
STUDS (8/16A)	6.69" (170)	5.63" (143)	3.15" (80)	3.15" (80)	4.72" (120)	4.53" (115)	2.72" (69)	0.91" (23)	4.06" (103)	2.24" (57)	1.30" (33)	Ø 0.43x0.25", 4x (Ø 11.0x6.51, 4x)	STUD, M5, 8x	STUD, GND, M5, 2x	0.79" (20)	5.02" (128)	0.31" (8)
STUDS (25/36A)	7.09" (180)	6.02" (153)	4.53" (115)	3.54" (90)	5.12" (130)	4.92" (125)	2.72" (69)	1.10" (28)	4.41" (112)	3.62" (92)	1.97" (50)	Ø 0.43x0.25", 4x (Ø 11.0x6.51, 4x)	STUD, M5, 8x	STUD, GND, M5, 2x	0.79" (20)	5.41" (138)	0.31" (8)
STUDS (64A)	7.91" (201)	6.02" (153)	4.92" (125)	3.94" (100)	5.51" (140)	4.92" (125)	3.11" (79)	0.91" (23)	4.41" (112)	4.02" (102)	1.97" (50)	Ø 0.43x0.25", 4x (Ø 11.0x6.51, 4x)	STUD, M6, 8x	STUD, GND, M6, 2x	0.79" (20)	5.41" (138)	0.31" (8)
STUDS (80A)	8.66" (220)	6.69" (170)	4.33" (110)	4.33" (110)	6.30" (160)	5.51" (140)	3.72" (95)	0.90" (23)	4.83" (123)	3.43" (87)	1.18" (30)	Ø 0.45x0.25", 4x (Ø 11.5x6.5, 4x)	STUD, M6, 8x	STUD, GND, M6, 2x	0.98" (25)	6.04" (154)	0.32" (8)
STUDS (120A)	9.80" (249)	6.69" (170)	5.12" (130)	5.12" (130)	7.09" (180)	5.51" (140)	3.72" (95)	0.90" (23)	4.82" (123)	4.17" (106)	1.18" (30)	Ø 0.45x0.25", 4x (Ø 11.5x6.5, 4x)	STUD, M10, 8x	STUD, GND, M10, 2x	0.98" (25)	6.04" (154)	0.33" (8)
STUDS (160A)	10.87" (276)	6.69" (170)	5.12" (130)	5.91" (150)	7.87" (200)	5.51" (140)	3.72" (95)	0.90" (23)	4.82" (123)	4.17" (106)	1.18" (30)	Ø 0.45x0.25", 4x (Ø 11.5x6.5, 4x)	STUD, M10, 8x	STUD, GND, M10	0.98" (25)	6.04" (154)	0.32" (8)

TYPICAL TOLERANCE: +/-0.02" (0.50MM)

RP415

3-PHASE **WYE** COMPACT SINGLE STAGE POWER LINE FILTER

TYPICAL INSERTION LOSS, dB (50/50 Ohm)

Amps	Freq (MHz)	0.15	0.5	1.0	10	30
8	CM (dB)	65	58	55	45	32
	DM (dB)	52	80	78	65	60
16	CM (dB)	50	46	45	45	40
	DM (dB)	50	75	75	70	70
25	CM (dB)	55	65	60	50	45
	DM (dB)	60	80	75	60	60
36	CM (dB)	50	60	55	40	40
	DM (dB)	60	76	75	65	55
64	CM (dB)	50	65	60	50	40
	DM (dB)	60	80	75	60	60
80	CM (dB)	45	65	60	46	40
	DM (dB)	60	80	80	65	60
120	CM (dB)	65	70	70	60	50
	DM (dB)	60	75	75	60	55
160	CM (dB)	55	65	60	48	40
	DM (dB)	50	75	70	45	45

Mouser Electronics

Authorized Distributor

Click to View Pricing, Inventory, Delivery & Lifecycle Information:

[Astrodyne TDI:](#)

[RP415-64-100-S](#) [RP415-16-100-S](#) [RP415-8-100-S](#) [RP415-25-100-S](#) [RP415-80-100-S](#) [RP415-120-150-S](#) [RP415-36-100-S](#) [RP415-160-200-S](#)