

H G F E D C B A

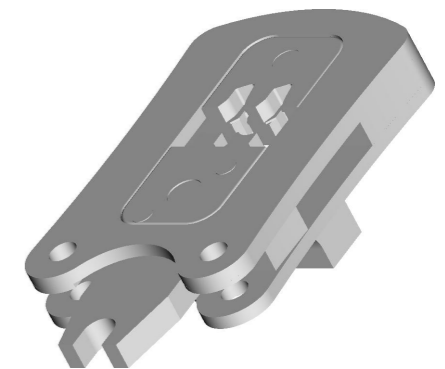
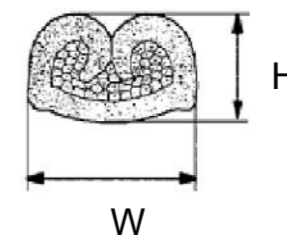
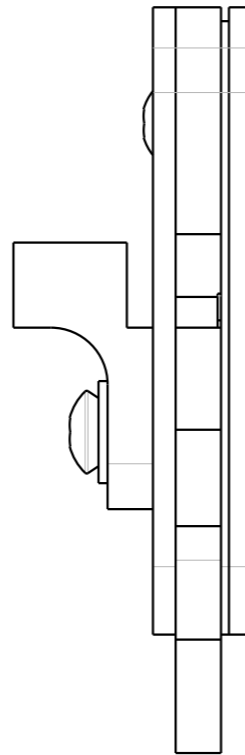
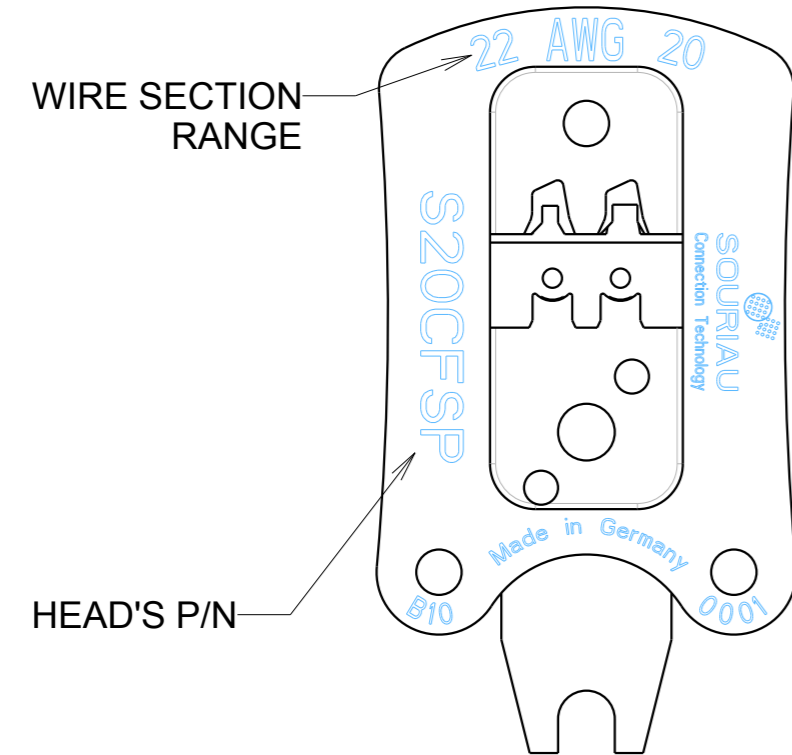
b : 1 ; RL

4

3

2

1



TECHNICAL CHARACTERISTICS :
 Contact positioning with locator
 Burnished surface
 Fully recyclable
 RoHS (Directive 2002/95/EG) compliant

Weight : approx. 115 g
 Height : approx. 65mm
 Width : approx. 37mm

(1) Nota : issued from IEC60352-2
 Individual packaging

Use with SHANDLES part number

P/N : SXXCFSP

ACTIVE CONTACT PART	CONTACT TYPE	DIE LOCATION ON HEADS	WIRE SECTION RANGE (1)	SECTION (mm ²) (1)	TENSILE STRAIGHT TEST (mini) (1)	HEIGHT (mm) H (±0.075)	WIDTH (mm) W (±0.075)	HEAD'S P/N
size 20	CF10PC10RF CF10SC10RF	22	AWG 22	0,32 min	40 N	0.95	1.50	S20CFSP
		20	AWG 20	0,60 max	72 N	1.00	1.55	
size 16	CF16PC10RF CF16SC10RF	19/18	AWG 19	0,70 min	80 N	1.30	2.00	S16CFSP
			AWG 18	0,82 max	90 N			
		16	AWG 16	1,5 max	150 N	1.35	2.10	
	CF16PC40RF CF16SC40RF	14	AWG 14	2,5 max	230 N	1.75	2.65	

b	02/11/11	Add height and width of crimped area		N° 22013
ISS	DATE	Latest modification - by: ROUILLARD Ch		MOD N°
Designed by: ROUILLARD Ch		Date: 25/10/11	CUSTOMER DRAWING	
TITLE		CLIPPER TOOLING CRIMPING TOOL'S HEAD FOR STAMPED AND FORMED CONTACTS		
Scale	1/1	General linear Tolerances: ± 0.2	NPRDS / PROJECT TOOLING	
		WWW.SOURIAU.COM		This document is the property of SOURIAU. It must not be reproduced or communicated without permission.
FORMAT	SOURIAU DRG N° SXXCFSP-C			SHEET
A3				1/1

NOT EXPORT CONTROLLED

H G F E D C B A

Mouser Electronics

Authorized Distributor

Click to View Pricing, Inventory, Delivery & Lifecycle Information:

[Souriau:](#)

[S16CFSP](#)