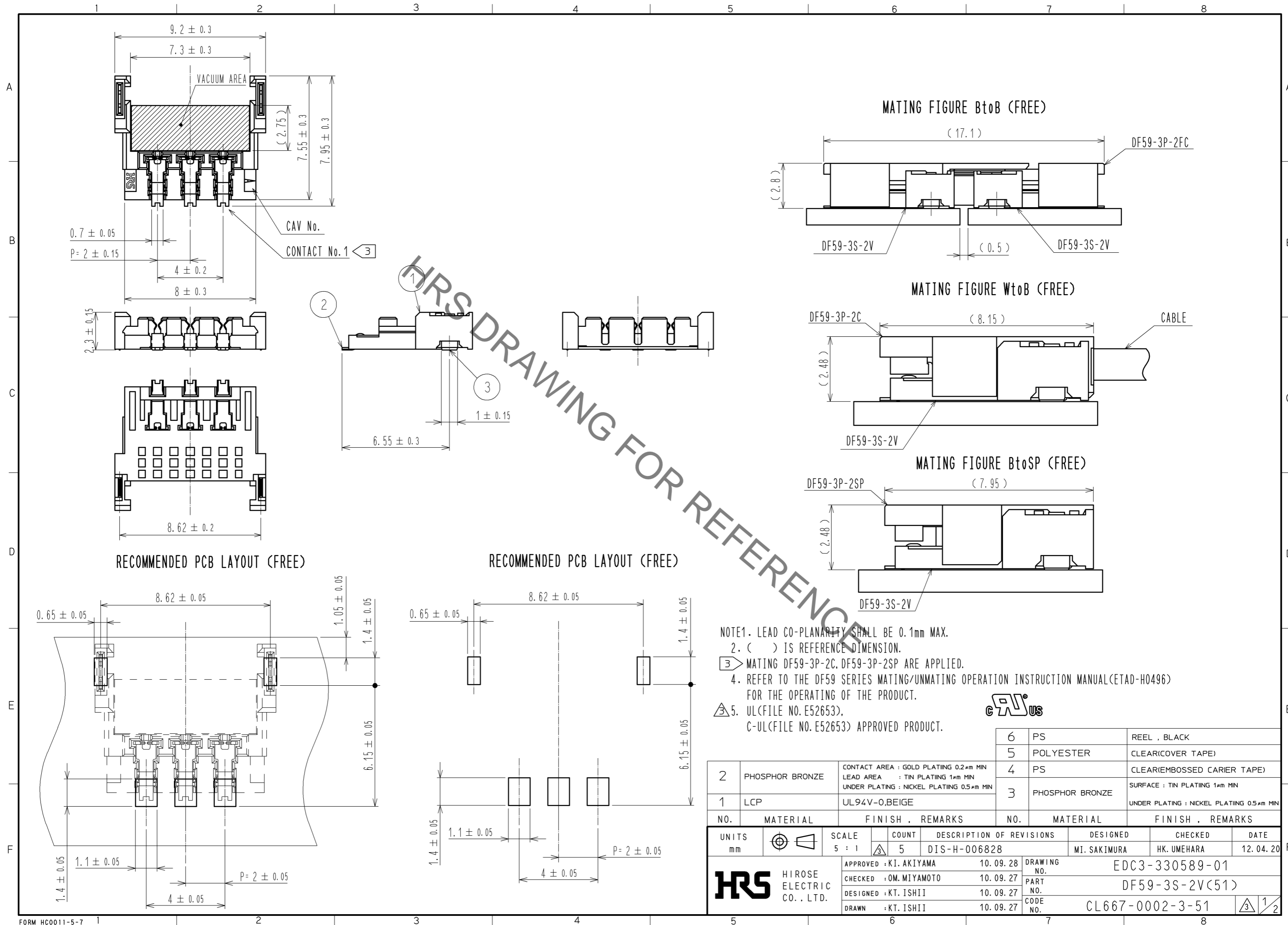


Aug.1.2021 Copyright 2021 HIROSE ELECTRIC CO., LTD. All Rights Reserved.
In case of consideration for using Automotive equipment / device which demand high reliability, kindly contact our sales window correspondents.



NOTE1. LEAD CO-PLANARITY SHALL BE 0.1mm MAX.
 2. () IS REFERENCE DIMENSION.
 ③ MATING DF59-3P-2C, DF59-3P-2SP ARE APPLIED.
 4. REFER TO THE DF59 SERIES MATING/UNMATING OPERATION INSTRUCTION MANUAL(ETAD-H0496) FOR THE OPERATING OF THE PRODUCT.
 ⑤ UL(FILE NO. E52653), C-UL(FILE NO. E52653) APPROVED PRODUCT.

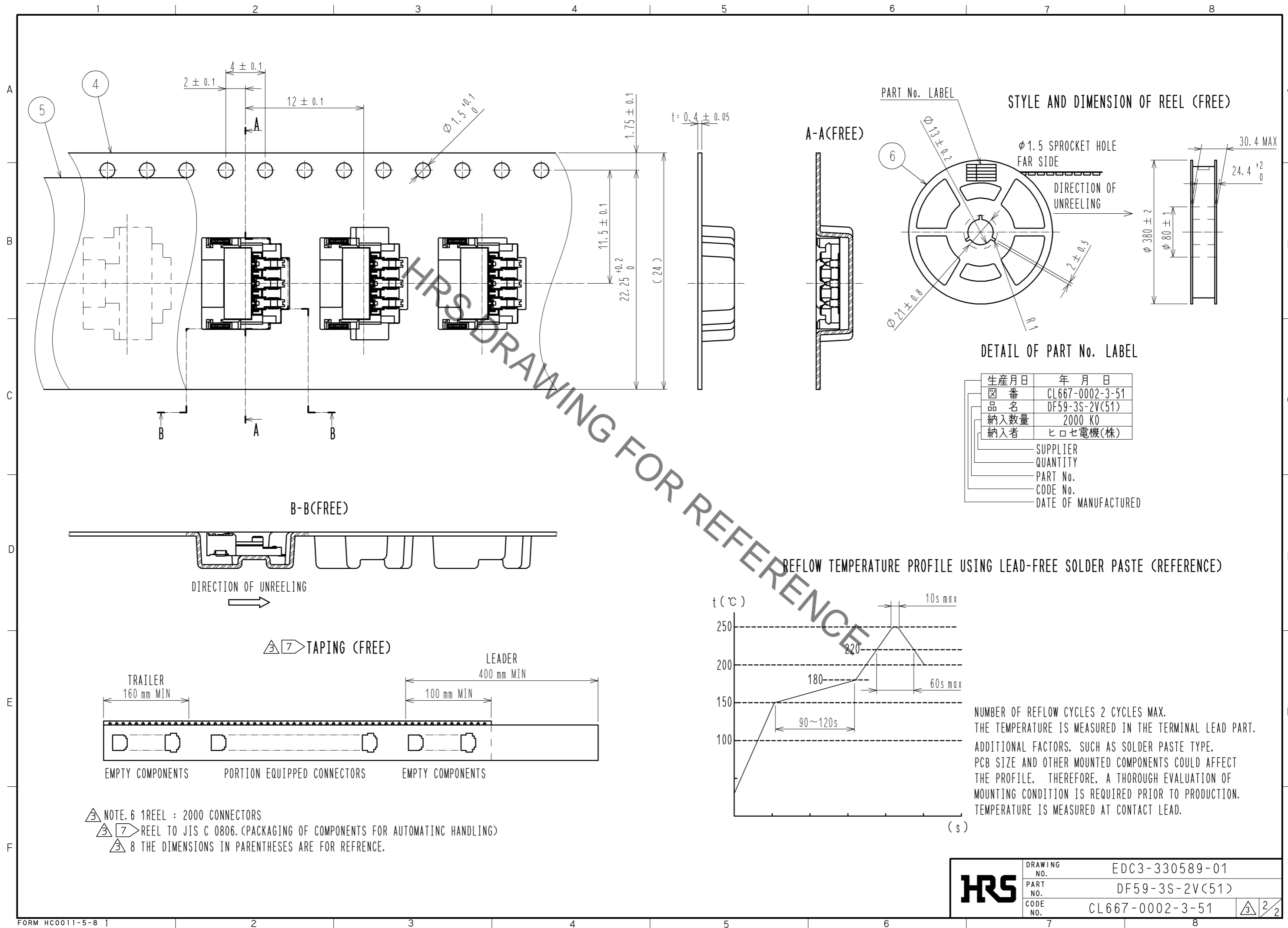
6	PS	REEL , BLACK
5	POLYESTER	CLEAR(COVER TAPE)
4	PS	CLEAR(EMBOSSED CARRIER TAPE)
3	PHOSPHOR BRONZE	SURFACE : TIN PLATING 1μm MIN UNDER PLATING : NICKEL PLATING 0.5μm MIN

NO.	MATERIAL	FINISH .	REMARKS	NO.	MATERIAL	FINISH .	REMARKS
2	PHOSPHOR BRONZE	CONTACT AREA : GOLD PLATING 0.2μm MIN LEAD AREA : TIN PLATING 1μm MIN UNDER PLATING : NICKEL PLATING 0.5μm MIN					
1	LCP	UL94V-0,BEIGE					

UNITS	SCALE	COUNT	DESCRIPTION OF REVISIONS	DESIGNED	CHECKED	DATE
mm	5 : 1	5	DIS-H-006828	MI. SAKIMURA	HK. UMEHARA	12. 04. 20

APPROVED : KI. AKIYAMA	10. 09. 28	DRAWING NO.	EDC3-330589-01
CHECKED : OM. MIYAMOTO	10. 09. 27	PART NO.	DF59-3S-2V(51)
DESIGNED : KT. ISHII	10. 09. 27	CODE NO.	CL667-0002-3-51
DRAWN : KT. ISHII	10. 09. 27		

Aug.1.2021 Copyright 2021 HIROSE ELECTRIC CO., LTD. All Rights Reserved.
 In case of consideration for using Automotive equipment / device which demand high reliability, kindly contact our sales window correspondents.



HRS	DRAWING NO.	EDC3-330589-01
	PART NO.	DF59-3S-2V(51)
	CODE NO.	CL667-0002-3-51
		2/2

Mouser Electronics

Authorized Distributor

Click to View Pricing, Inventory, Delivery & Lifecycle Information:

[Hirose Electric:](#)

[DF59-3S-2V\(51\)](#)