

INTERCONNECTS

SERIES 714...01X • .100" GRID ULTRA LOW PROFILE CARRIERS • SINGLE AND DOUBLE ROW STRIPS

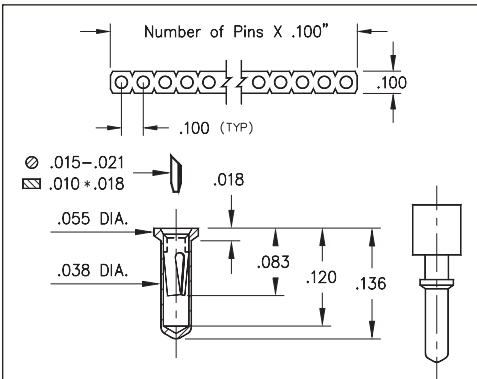


FIG. 1

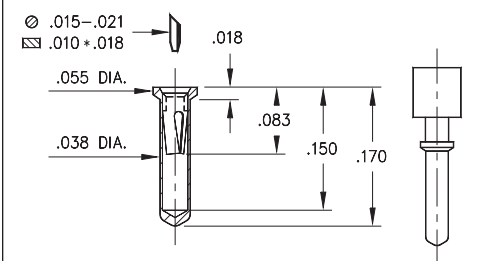


FIG. 2

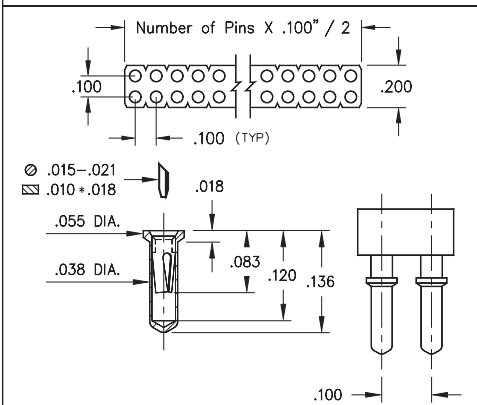


FIG. 3

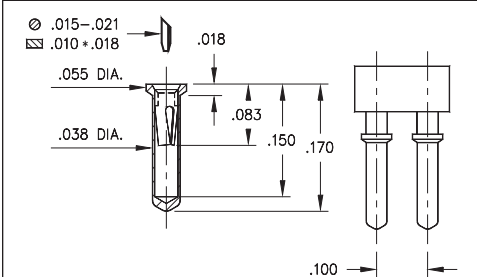
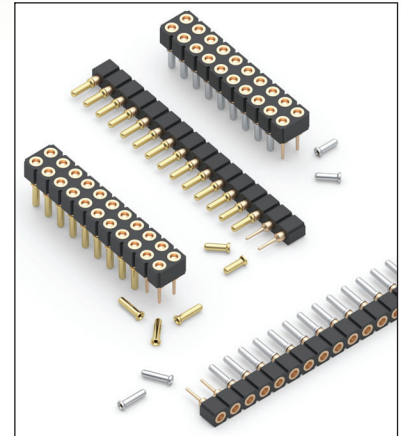


FIG. 4

- Ultra low profile receptacles sit .018" above the board
- Series 714 use MM #0552-1 and MM #0552-2 pin receptacles. See page 158 for details
- Hi-Rel, 3-finger BeCu #11 contact is rated at 3 amps. See page 251 for details
- Insulators are high temperature thermoplastic, suitable for all soldering operations





ORDERING INFORMATION

FIG. 1	Single Row (.039" min. mounting hole)
	714-XX-1__-31-012000 Specify number of pins 01-64
FIG. 2	Single Row (.039" min. mounting hole)
	714-XX-1__-31-018000 Specify number of pins 01-64
FIG. 3	Double Row (.039" min. mounting hole)
	714-XX-2__-31-012000 Specify number of pins 04-64
FIG. 4	Double Row (.039" min. mounting hole)
	714-XX-2__-31-018000 Specify number of pins 04-64



XX=Plating Code
See Below

For
Electrical, Mechanical
& Environmental Data,
See page 264

SPECIFY PLATING CODE XX=	91	93	41	43
Sleeve (Pin) 	200 μ"Sn/Pb	200 μ"Sn/Pb	200 μ"Sn	200 μ"Sn
Contact (Clip) 	10 μ" Au	30 μ" Au	10 μ" Au	30 μ" Au



Mouser Electronics

Authorized Distributor

Click to View Pricing, Inventory, Delivery & Lifecycle Information:

Mill-Max:

[714-93-264-31-018000](#) [714-93-264-31-012000](#) [714-93-132-31-018000](#) [714-93-132-31-012000](#) [714-93-120-31-018000](#) [714-93-120-31-012000](#) [714-93-107-31-012000](#) [714-93-164-31-018000](#) [714-93-164-31-012000](#) [714-93-103-31-018000](#) [714-43-264-31-018000](#) [714-43-264-31-012000](#) [714-43-164-31-018000](#) [714-43-164-31-012000](#) [714-43-132-31-018000](#) [714-43-132-31-012000](#) [714-43-120-31-018000](#) [714-43-120-31-012000](#) [714-43-214-31-018000](#) [714-43-206-31-018000](#) [714-43-146-31-018000](#) [714-43-234-31-018000](#) [714-43-101-31-018000](#) [714-43-208-31-018000](#) [714-43-114-31-018000](#)