

FESTO

A quick match

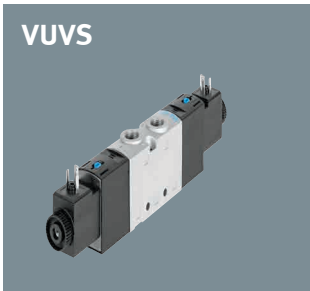
Your selection tool for choosing
valves and valve terminals.

The valve series at a glance:

From individual valves...

Simple, cost-effective, expandable

VUVS



Valves VUVS/VTUS

- Low-cost
- Very sturdy and capable of high flow rates
- Pneumatic and electrical valve control
- External pilot air supply possible via manifold rail
- Three valve sizes

VTUG with plug-in



VUVG



Valve/valve terminal VUVG/VTUG

- Low-cost valve range – from individual valves to fieldbus connections
- Pneumatic and electrical valve control
- Compact and capable of high flow rates
- Convenient for in a control cabinet
- Three valve sizes

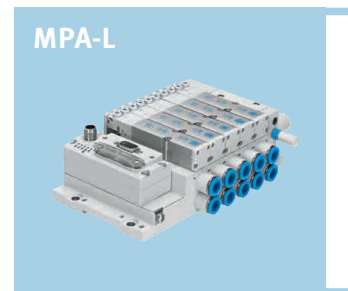
CPV



Valve terminal CPV

- Compact, light, with maximum power density
- Direct integration of numerous fieldbus interfaces
- Compact in a fixed grid
- Direct integration in a control cabinet
- Three valve sizes

MPA-L



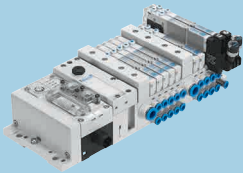
A multitude of application-specific valves and valve terminals rounds off our offer, for example:

- The Clean Design valve terminal MPA-C – particularly easy to clean and in IP69k
- The pilot/miniatuure valve terminal VTOC – particularly compact with interlock option for greater security

... to automation platforms.

Intelligent, communicative, forward-looking

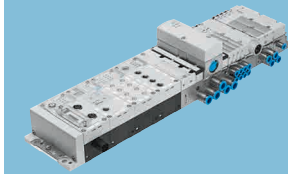
MPA-L



Valve terminal MPA-L

- Highly modular – simple expansion, valve by valve
- High-quality and lightweight polymer housing
- Wide range of electrical connection options
- Three valve sizes available

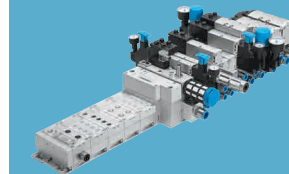
MPA-S



Valve terminal MPA-S

- Excellent communication options thanks to serial linking
- Intelligent diagnostics concept
- Integrated proportional technology
- Unrivalled: largest number of valve positions on one valve terminal
- Pneumatic and electrical function integration
- Two valve sizes available

VTSA



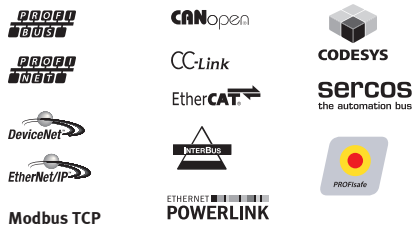
Valve/valve terminal VSVA/VTSA

- According to standard or as a high-flow variant
- Sturdy
- Pneumatic function integration
- Wide range of electrical connection options
- For all applications with high flow rates
- Solutions for safety-related pneumatics
- Five valve sizes available

Find your suitable solution here!

Electrical communication capability

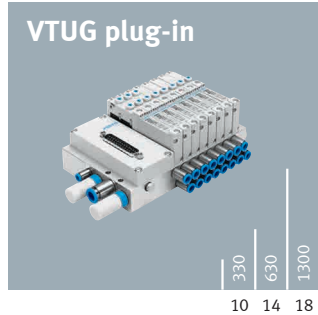
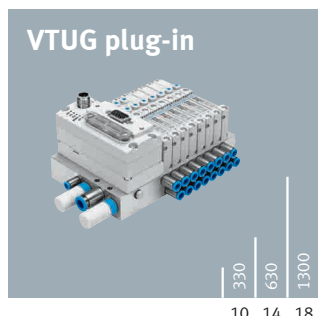
Fieldbus CPX



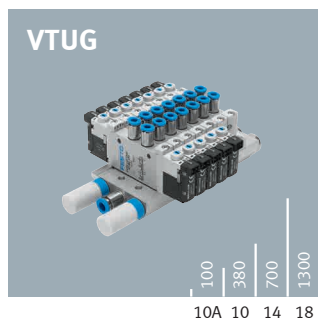
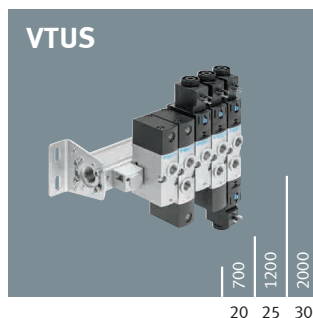
Fieldbus CTEU



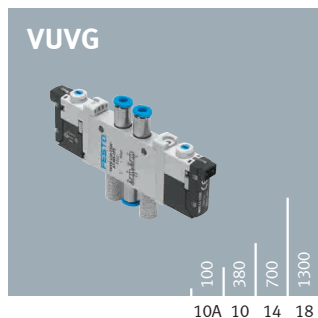
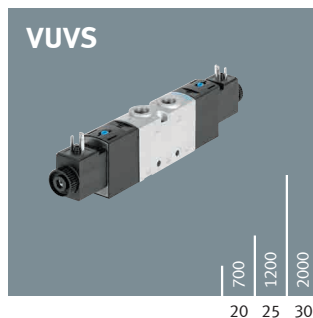
Multi-pin plug



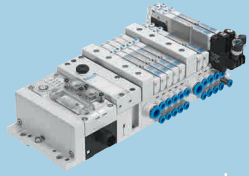
Individual connection



Individual valve

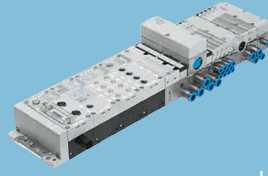


MPA-L



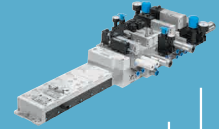
360
670
850
10 14 20

MPA-S



360
700
10 20

VTSA/-F



Safety

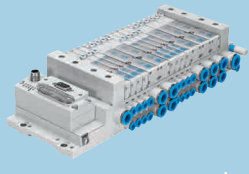
550/700
1100/1350
1400/1800
2900/2900
4000/4000
18 26 42 52 65

CPV



400
800
1600
10 14 18

MPA-L



360
670
850
10 14 20

CPV



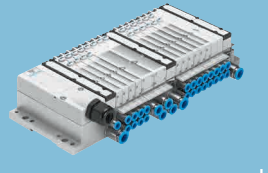
400
800
1600
10 14 18

MPA-L



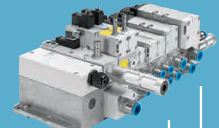
360
670
850
10 14 20

MPA-S



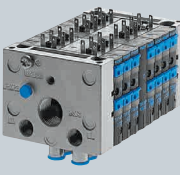
360
700
10 20

VTSA/-F



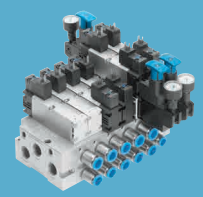
550/700
1100/1350
1400/1800
2900/2900
4000/4000
18 26 42 52 65

CPV



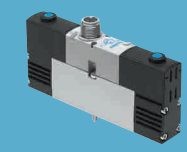
400
800
1600
10 14 18

VTIA



550
1100
18 65

VSPA

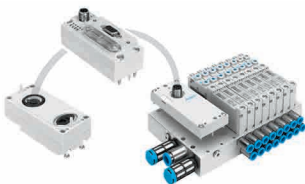


550
1100
1300
2800
18 26 42 52

Seamlessly in...

Fieldbus/Ethernet

Fieldbus node CTEU



Plug and work. One fieldbus node for various valve terminals

Simple, modular and cost-effective. The so-called I-Port is the new universal communication interface from Festo. With the I-Port numerous products can be connected to fieldbuses or directly to IO-Link. In addition, it enables simple switching between bus systems without the need for any configuration!



CAPC adapter with CTEU

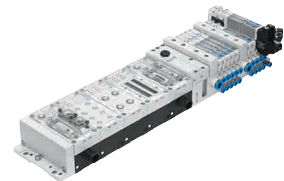


From fieldbus node right up to a small installation system with the adapter CAPC:

With a bus node, up to two I-Port devices can be connected via an adapter CAPC.

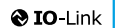


CPX-CTEL



Easy connection to the world of CPX! The installation system CTEL.

Decentralised and economical installation of up to four I-Port devices and/or input modules per CTEL module.



1 x I-Port

2 x I-Port

4 x I-Port



IO-Link thanks to I-Port interface:

Direct connection to conventional IO-Link master systems or CPX-CTEL. Power supply and communication via a low-cost 5-pin standard cable.

You can find further IO-Link products here:

→ www.festo.com/io-link

More information on the fieldbus CTEU:

→ www.festo.com/cteu

* via CAPC adapter or CTEL module

Technical data

Valve terminals

Product	Valve function	Design	Width (mm)	Flow rate (Q _n in l/min)	Pneumatic connection	Max. valve positions/ max. solenoid coils	Function integration	Protection
VTUG plug-in	5/2 5/3 2x3/2	Semi in-line valve Sub-base valve	10	220 330	M5 (QS 3/4/6); 1/8", 5/32" M7 (QS 4/6); 3/16", 1/4"	24/48	Interlock	IP40 IP65/IP67
			14	630	G1/8 (QS 4/6/8); 1/4", 5/16"			
			18	1300	G1/4 (QS 6/8/10)			
CPV	5/2 5/3 2x3/2 2x2/2	Valve with integrated subbase	10	400	M7 (QS 4/6); 1/4", 1/8", 5/16"	8/16 (multi-pin/ fieldbus) 8/8 (AS-interface)	Vacuum generator Flow control modules Interlock	IP40 IP65
			14	800	G1/8 (QS 4/6/8); 5/16", 1/4"			
			18	1600	G1/4 (QS 6/8/10); 3/8", 5/16"			
MPA-L	5/2 5/3 2x 3/2 2x 2/2 3/2	Sub-base valve	10	360	QS 3/4/6; 1/8", 5/32", 3/16", 1/4"	32/32	Pressure regulator Pressure shut-off plate Restrictors	IP40 IP65 IP67
			14	670	QS 6/8; 5/16", 1/4"			
			20	850	QS 8/10/12; 3/8", 5/16", 1/2"			
MPA S	5/2 5/3 2x3/2 2x2/2 3/2	Sub-base valve	10	360	M7 (QS 4/6); 3/16", 1/4"	8/8 (AS-interface) 24/24 (multi-pin) 32/32 (CPI) 64/128 (CPX)	Pressure regulator Pressure shut-off plate Pressure measurement module Proportional-pressure regulator Voltage zones Extended diagnostics Restrictors	IP65
			20	700	G1/8 (QS 6/8); 5/16", 1/4"			
VTSA/-F	5/2 5/3 2x 3/2 2x 2/2	Sub-base valve (ISO 15407-2) (ISO 5599-2)	18	550/700	G1/8 (QS 6/8); 1/8 NPT	8/8 (AS-interface) 32/32 (multi-pin/ CPX)	Pressure regulator plate Pressure shut-off plate Flow control plate Vertical supply Pilot air switching valve Soft-start valve Safe reversing Voltage zones Vacuum generator	IP65
			26	1100/1350	1/4 (QS 8/10); 1/4 NPT			
			42	1400/1800	G3/8 (QS 10/12); 3/8 NPT			
			52	2900/2900	G1/2 (QS 12/16); 1/2 NPT			
			65	4000/4000	G1/2 (QS 12/16); 1/2 NPT			

Valves

Product	Valve function	Design	Width (mm)	Flow rate (Q _n in l/min)	Pneumatic connection	Voltage	Electrical connection	Protection
VUVS/ VTUS	3/2 5/2 5/3	In-line valve	20	700	G1/8 (QS 4/6/8)	12 VDC 24 VDC 110 VAC 230 VAC	Connector socket type B (from 25 mm width) or type C	IP 65 IP 67
			25	1200	G1/4 (QS 6/8/10)			
			30	2000	G3/8 (QS 12/16)			
VUVG/ VTUG	5/2 5/3 2x3/2-way	In-line valve Semi in-line valve Sub-base valve	10	100 200 380	M3 (QS 3/4); 1/8", 5/32" M5 (QS 3/4/6); 1/8", 5/32" M7 (QS 4/6); 3/16", 1/4"	5 VDC 12 VDC 24 VDC	Plug Stranded wire Cable Plug M8	IP40 IP65
			14	700	G1/8 (QS 4/6/8); 1/4", 5/16"			
			18	1300	G1/4 (QS 6/8/10); 1/4", 5/16", 3/8"			
VSV A/ VTIA	5/2 5/3 2x3/2-way 2x2/2	Sub-base valve (ISO 15407-1) (ISO 5599-1)	18	550	G1/8; 1/8 NPT	12 VDC 24 VDC 24 VAC 110 VAC 230 V AC	Central plug M8 Central plug M12 Square plug Form C	IP65
			26	1100	G1/4; 1/4 NPT			
			42	1300	G1/4; 1/4 NPT			
			52	2800	G3/8; 3/8 NPT			

You can find information about other valves and valve terminals at:

→ www.festo.com/valves

→ www.festo.com/valveterminals

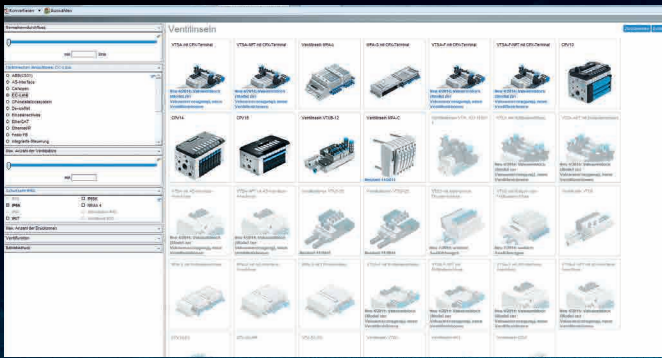
Become more productive: use the software tools and online offers from Festo

As your partner we make things as easy as possible for you.

How? By taking great care to understand your processes and using that knowledge to develop the software tools which save you both time and process costs.

From selection, sizing and engineering design to ordering and commissioning, all the way to after-sales service.

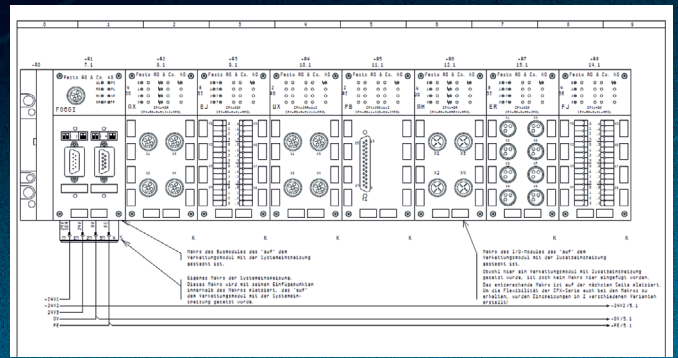
Your valve and valve terminal finder



With our product finder and the features selector in the online catalogue, you'll quickly find the right product.

→ www.festo.com/product_finder/valve_terminals

Fast and safe design



A few clicks are all that is needed to integrate our data into your CAD engineering design.

→ www.festo.com/catalogue

EPLAN macros speed up the electrical design.

→ www.festo.com/eplan

FluidDraw for quickly creating electrical and pneumatic circuit diagrams.

→ www.festo.com/fluiddraw

Ordering made easy:

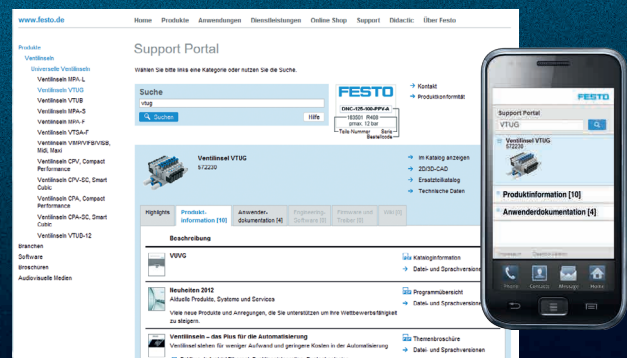


Price and delivery time, immediately and completely up-to-date. Order tracking including order confirmation, delivery note and invoice.

Simple, direct integration of the product data into your procurement system, e.g. SAP SRM.

→ www.festo.com/shop

All about the products: the Support Portal



All of the product information via the part numbers – from the design to commissioning.

The product key:

For simple re-ordering. Also includes all information relating to your order.

→ www.festo.com/sp

The mobile Support Portal can be used on any smartphone.

