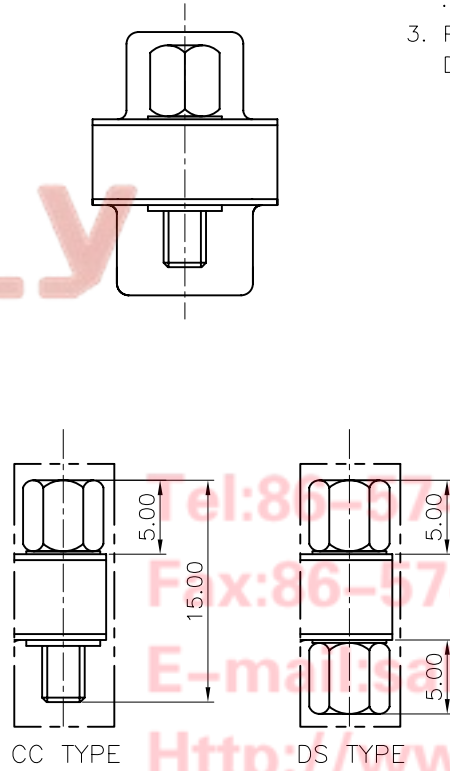
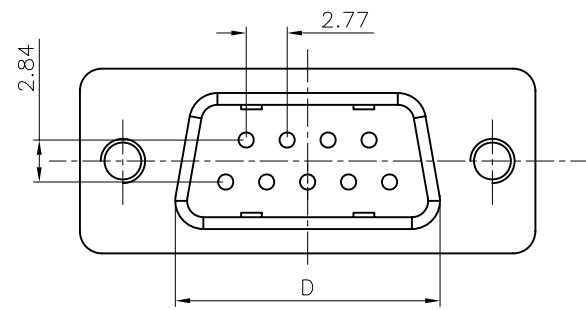
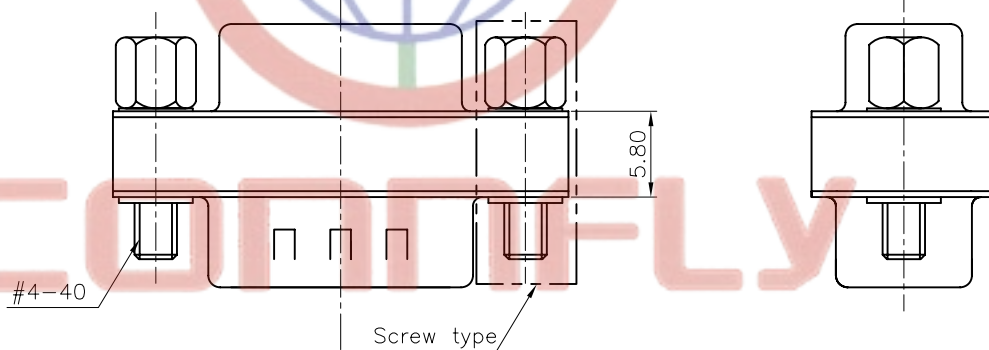
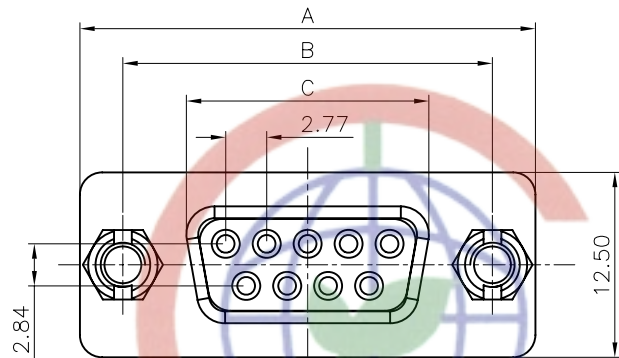


REV.	DESCRIPTION	DRAWN	CHECKED	APPROVED
A	NEW RELEASE	LL 10/09/06		



NOTES:

- SPECIFICATION:
  - . Current Rating: 1.5A.
  - . Insulation Resistance: 1000MΩ min.
  - . Dielectric Withstanding: 500V for One minute.
  - . Contact resistance: 50mΩ max.
  - . Operating Temperature: -40°C to +105°C
- MATERIALS
  - . Housing: Thermoplastic(UL94 V-0).
  - . Contact: Copper alloy.
  - . Shell: Steel.
- Product Number code:

DS1082-02 - X X X X X

- Screw type
- CC: CC type
- DS: DS type
- Shell plating
- N: All Nickel
- 6: All Tin
- Housing color
- B: black
- L: blue
- Contact plating
- 8: Full gold flash
- Connector type
- 9F: 9Female & 9Female
- 9M: 9Mlae & 9Female
- 9P: 9Mlae & 9Male
- 15F: 15Female & 15Female
- 15M: 15Mlae & 15Female
- 15P: 15Mlae & 15Male
- 25F: 25Female & 25Female
- 25M: 25Mlae & 25Female
- 25P: 25Mlae & 25Male
- 37F: 37Female & 37Female
- 37M: 37Mlae & 37Female
- 37P: 37Mlae & 37Male

Dimension

Position	A±0.2	B±0.2	C±0.2	D±0.2
9	30.80	24.99	16.33	17.90
15	39.14	33.32	24.66	26.50
25	53.04	47.04	38.38	40.00
37	69.32	63.50	54.84	56.50

GENERAL TOLERANCE		ANGLE TOLERANCE		PROJECTION	TITLE
X.	±0.60	X.	±5°		D-SUB ADAPTOR
.X	±0.38	.X	±3°	mm	
.XX	±0.25	.XX	±2°	A4	SERIES DS1082-02 SERIES
DRAWING TYPE		CUSTOMER		晨翔电子有限公司 <b>CONNFLY CONNFLY ELECTRONIC CO. LTD</b>	
SCALE		SHEET			
DRAWING NO.		1 OF 1			
		C-DS1082-02-XXXXX			