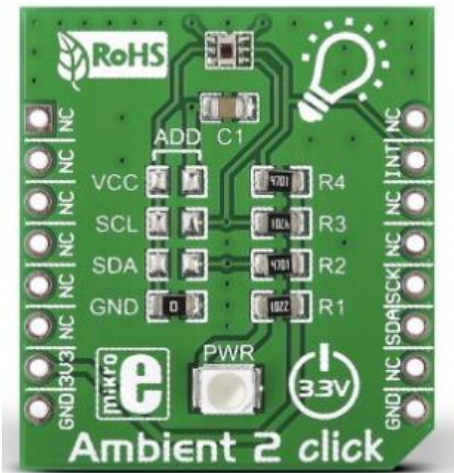


## Ambient 2 click



PID: MIKROE-1903

RS Product Code: [136-0740](#)

Ambient 2 click carries TI's OPT3001 Ambient Light sensor. It's a small (2mm x 2mm) single-chip lux meter that measures only the visible part of the light spectrum from any kind of source (mimicking the way humans see light). It does so by filtering out 99% of infrared light. The measurement range of Ambient 2 click is from 0.01 Lux to 83k lux, and a 23-bit resolution. Communication with the target MCU is done through mikroBUS I2C pins, with an additional INT pin which can be used for triggering wake-up events (offloading the MCU).

### Specification

Product Type	Optical
Applications	Display panel backlighting, street light control, security lighting and so on
On-board modules	OPT3001 Ambient Light sensor
Key Features	0.01 lux to 83k lux range, 23-bit resolution
Key Benefits	Approximates light response of human eye
Interface	I2C
Power Supply	3.3V
Compatibility	mikroBUS
Click board size	S (28.6 x 25.4 mm)
Weight	29g

# Downloads

[Ambient 2 Click Examples](#)

[Ambient 2 Click User Manual](#)