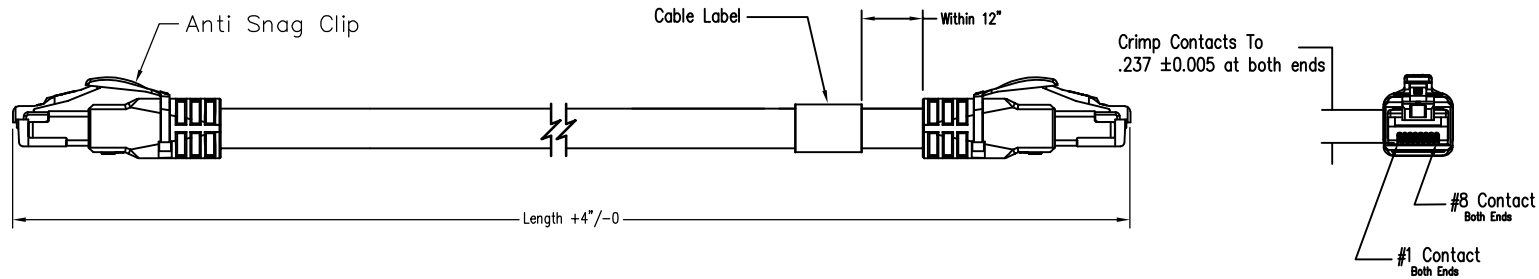


DATE	REV	ECN	APP'D. BY
05/21/19	A0	Released	OE
06/26/19	A1	11403	OE
09/25/19	A2	11450	ADB
11/07/19	A3	11473	BTS



P/N Structure

BM-xSTxxxF-yy

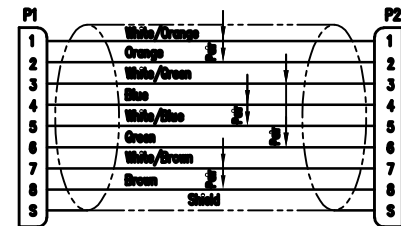
- 01 = TPE Jacket, Over molded boot, Latch Protector.
- UOM (See Part Numbers Reference Table)
- F = Feet
- M = Meters
- Length = xxx (001-100)
- T = Teal
- S = Shielded
- 5 = C5e
- 1 = C6a

LENGTH	Part Number
100 FT	BM-XST100F-01
10 FT	BM-XST010F-01
1 FT	BM-XST001F-01
10 M	BM-XST100M-01
1 M	BM-XST010M-01
0.5 M	BM-XST005M-01

Cable Assembly Family

Notes:

- 1) Each cable assembly to be individually bagged.
- 2) 50 μ m Gold plating on contacts
- 3) Cable Construction:
 - Stranded, Tin plated copper
 - 4Pr, SF/UTP.
 - Jacket Material: See Part Number
- 4) 100% Transmission Tested for Performance



568B Standard Wiring Map

ASSEMBLY FORMAT REV. 6/3/05



THIRD ANGLE PROJECTION			206 Van Vorst Street Jersey City, NJ 07302 +1 201 432 0463 http://www.belfuse.com	
DO NOT SCALE DRAWING DRAWING IS SUBJECT TO CHANGE WITHOUT NOTICE			TITLE: IP20 Shielded Patchcord Assemblies, C5e & C6a SF/UTP	
DIMENSIONS: INCHES [METRIC]		UNLESS OTHERWISE SPECIFIED TOLERANCES ARE ± 0.05 [0.13] ANGLES ARE $\pm 1^\circ$		DRN BY: TLS DATE 05/03/19
SHEET NO. 1 OF 1		THIS DRAWING AND THE SUBJECT MATTER SHOWN THEREON ARE CONFIDENTIAL AND THE PROPRIETARY PROPERTY OF BEL FUSE, INC. AND SHALL NOT BE REPRODUCED, COPIED, OR USED IN ANY MANNER WITHOUT PRIOR WRITTEN CONSENT OF BEL FUSE, INC.		APPD BY: OE DATE 05/21/19
		DWC NO. CT999184		REV. A3

Mouser Electronics

Authorized Distributor

Click to View Pricing, Inventory, Delivery & Lifecycle Information:

[Bel:](#)

[BM-1ST005F-01](#) [BM-1ST010F-01](#) [BM-1ST030F-01](#) [BM-5ST005F-01](#) [BM-1ST001F-01](#) [BM-1ST003F-01](#) [BM-1ST007F-01](#) [BM-1ST015F-01](#) [BM-1ST020F-01](#) [BM-1ST025F-01](#) [BM-5ST001F-01](#) [BM-5ST003F-01](#) [BM-5ST007F-01](#)
[BM-5ST010F-01](#) [BM-5ST015F-01](#) [BM-5ST020F-01](#) [BM-5ST025F-01](#) [BM-5ST030F-01](#)