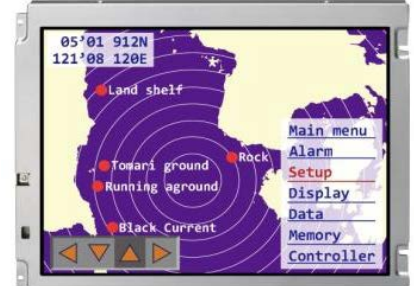


[Features]

- Adoption of T-EVT(Transmissive-Enhanced View TFT))
- High luminance(900cd/m²)
- High contrast(900:1)
- 262K colors (CMOS RGB 6-bit)
- Wide temperature(-30°C to +80°C)
- Reversible-scan direction
- Long-life LED backlight^{*1}



Pixel	640(H) x 480(V)
Display area	211.2(H) x 158.4(V) mm 10.4 inches (26cm)
Display color	262,144 colors
Pixel pitch	0.33(H) x 0.33(V) mm
Luminance	900cd/m ² (typ.)
Contrast ratio	900:1 (typ.)
Viewing angle ^{*2}	Up: 80°,Down: 80°,Left: 80°,Right: 80°
Response time ^{*3}	18ms (typ.)
Signal system	CMOS RGB 6-bit
Power supply voltage	3.3V / 5.0V
Power consumption	6.4W (typ.)
Operating temperature	-30°C to +80°C
Storage temperature	-30°C to +80°C
Polarizer surface	Clear + Antireflection
Module size	243.0 (typ.) x 185.1 (typ.) x 11.0 (max.) mm
Weight	475g (typ.)
Backlight	LED backlight(Replaceable)
LED driver	104PW01F

*1: 70k hours long life LED

*2: Contrast ratio ≥ 10:1

*3: Ton+Toff (10%←→90%)

*All information is subject to change without notice.

*Screen images are simulated.

<Tianma Japan web site>

Japanese <https://www.tianma.co.jp/jp>

English <https://www.tianma.co.jp/en>

Mouser Electronics

Authorized Distributor

Click to View Pricing, Inventory, Delivery & Lifecycle Information:

[Tianma:](#)

[NL6448BC33-70C](#)