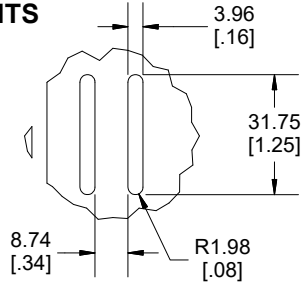
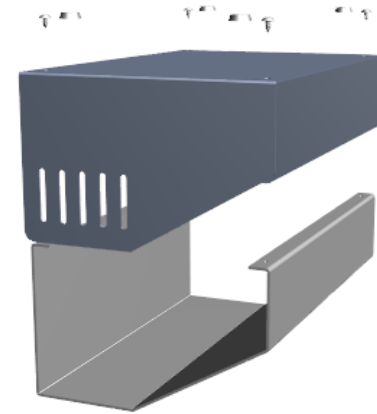
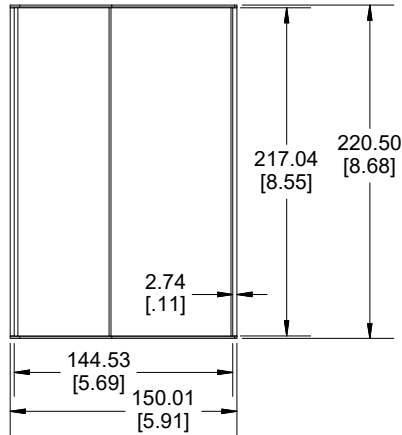


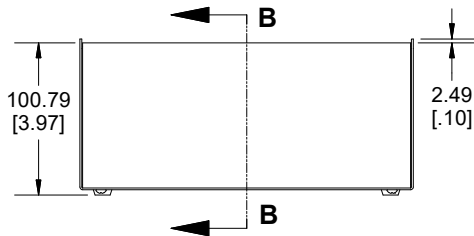
**DETAIL A  
END VENTS**



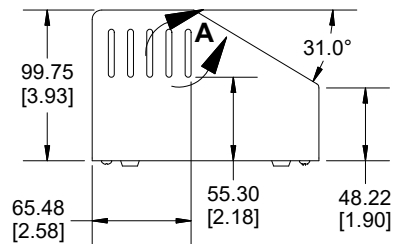
**TOP VIEW OF ENCLOSURE**



**BACK VIEW OF ENCLOSURE**



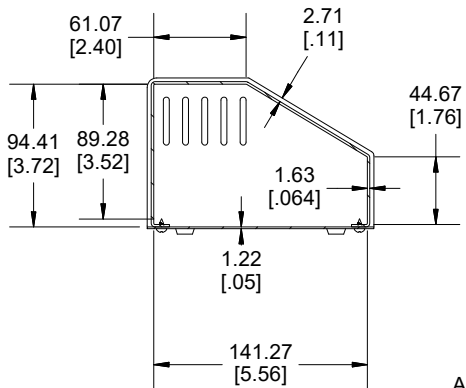
**END VIEW OF ENCLOSURE**



**FRONT VIEW OF ENCLOSURE**

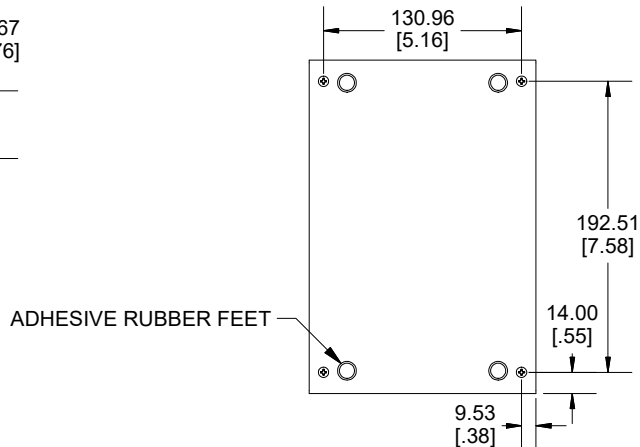


Enclosures can be Factory Modified (Milling, Drilling, Printing etc.)  
Contact Factory (modshop@hammfg.com) for quotes  
Solid models of this enclosure available in .stp or .x\_t  
(Part number and text placement/orientation on our products are subject to change,  
we do not recommend using them as a locating reference for modification purposes)



**SECTION B-B**

**BOTTOM VIEW OF ENCLOSURE**



ADHESIVE RUBBER FEET

NOTE	
Case Includes Adhesive Rubber Feet and Required Hardware.	
Enclosure Case is Made of 0.05" Steel.	
Top Panel is Made of 0.064" Aluminum.	

PART NUMBERS	
519-0910 Enclosure	
Smooth Light Grey Top Case Dark Satin Grey Base Case	519-0910
ACCESSORIES	
Plated Cover Screws (Pkg 50) [#6 x 1/4 Self Tapping]	SC19482-50
Grey Self-Adhesive Rubber Feet (Pkg 4)	1421T2GY

Dimensions:  
mm  
[inches]



**HAMMOND  
MANUFACTURING.**

**519-0910**

www.hammondmfg.com