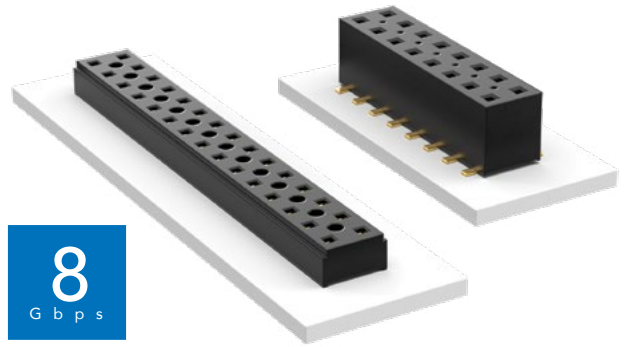


# COST-EFFECTIVE & DUAL WIPE SOCKETS

(2.00 mm) .0787" PITCH • TLE/CLT SERIES



## TLE

**Mates:**  
TMMH, TMM, MTMM,  
MMT, TW, LTMM, ZLTMM,  
TCMD, TSH

## CLT

**Mates:**  
TMM, TMMH, MTMM,  
MMT, TW, TSH

### SPECIFICATIONS

#### TLE

**Insulator Material:**  
Black Liquid Crystal Polymer  
**Contact Material:**  
Phosphor Bronze  
**Plating:**  
Au over 50 μ" (1.27 μm) Ni  
**Current Rating (TLE/TMMH):**  
3.2 A per pin  
(2 pins powered)  
**Operating Temp Range:**  
-55 °C to +125 °C  
**Insertion Depth:**  
(2.08 mm) .082" to  
(4.37 mm) .172" with  
(0.38 mm) .015" wipe,  
pass-through, or  
(3.35 mm) .132" min  
for bottom entry

#### CLT

Same as TLE except:  
**Plating:**  
Sn or Au over 50 μ" (1.27 μm) Ni  
**Current Rating (TMMH/CLT):**  
4.1 A per pin  
(2 pins powered)  
**Insertion Depth:**  
Top Entry=  
(1.40 mm) .055" minimum  
Bottom Entry=  
(2.57 mm) .101" minimum  
(add board thickness for  
correct post OAL)  
**Max Cycles:**  
100 with 10 μ" (0.25 μm) Au

### PROCESSING

#### TLE

**Lead-Free Solderable:**  
Yes  
**SMT Lead Coplanarity:**  
(0.10 mm) .004" max (02-26)  
(0.15 mm) .006" max (27-50)\*  
\*(.004" stencil solution  
may be available; contact  
ipg@samtec.com)  
**CLT**  
Same as TLE except:  
**SMT Lead Coplanarity:**  
(0.10 mm) .004" max (02-25)  
(0.15 mm) .006" max (26-34)\*  
(0.20 mm) .008" max (35-50)\*  
\*(.004" stencil solution  
may be available; contact  
ipg@samtec.com)

**Note:**  
Some lengths, styles and  
options are non-standard,  
non-returnable.

TLE	- 1	NO. PINS PER ROW	- 01	PLATING OPTION	- DV	OPTION
-----	-----	------------------	------	----------------	------	--------



02 thru 50

-G  
= 10 μ" (0.25 μm)  
Gold

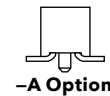
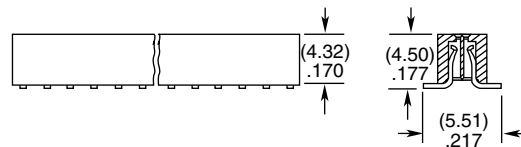
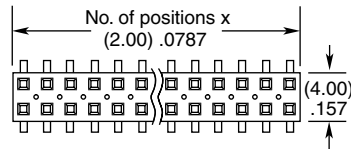
-A  
= Alignment Pin  
(3 positions minimum)

-K  
= (5.00 mm) .197" DIA  
Polyimide Film Pick & Place Pad  
(3 positions minimum)

-P  
= Metal Pick & Place Pad  
(4 positions minimum)

-TR  
= Tape & Reel Packaging  
(2-37 positions only)

-FR  
= Full Reel Tape & Reel  
(must order maximum  
quantity per reel; contact  
Samtec for quantity breaks)  
(2-37 positions only)



CLT	- 1	NO. PINS PER ROW	LEAD STYLE	PLATING OPTION	- D	OTHER OPTIONS
-----	-----	------------------	------------	----------------	-----	---------------



02 thru 50

-01  
= Through-hole

-F  
= Gold flash  
on contact,  
Matte Tin on tail

All options require  
Style -02

-BE  
= Bottom Entry  
(Required for bottom  
entry applications)

-A  
= Alignment Pin  
(3 positions minimum)  
Metal or plastic at  
Samtec's discretion

-K  
= (5.00 mm) .197" DIA  
Polyimide Film  
Pick & Place Pad  
(04 thru 50 only)

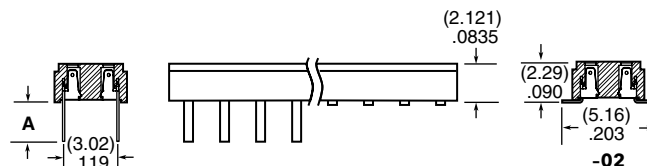
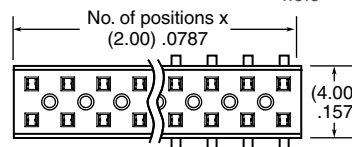
-P  
= Pick & Place Pad  
(4 positions minimum)  
(Not always necessary  
for auto placement.)

-TR  
= Tape & Reel  
(36 positions max)

-FR  
= Full Reel Tape & Reel  
(must order maximum  
quantity per reel;  
contact Samtec for  
quantity breaks)  
(36 positions max)

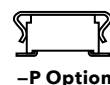
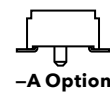
### ALSO AVAILABLE

Other Platings  
(MOQ Required)



-01 or -03

LEAD STYLE	A
-01	(2.16) .085
-03	(2.95) .116



# Mouser Electronics

Authorized Distributor

Click to View Pricing, Inventory, Delivery & Lifecycle Information:

## Samtec:

[CLT-104-02-F-D](#) [CLT-104-02-L-D](#) [CLT-102-02-F-D-BE](#) [CLT-110-02-G-D-BE-A-K-TR](#) [CLT-105-02-L-D-BE-A-P-TR](#)  
[CLT-110-02-G-D-BE-A](#) [CLT-120-02-G-D-BE-A](#) [CLT-105-02-F-D-A](#) [CLT-102-02-G-D](#) [CLT-105-02-L-D-A](#) [CLT-103-02-G-D-A](#) [CLT-110-02-G-D-A](#) [CLT-103-02-L-D-BE-A](#) [CLT-105-02-G-D-A](#) [CLT-102-02-F-D](#) [CLT-104-02-F-D-BE](#) [CLT-104-02-G-D-BE-A-K-TR](#) [CLT-106-02-F-D-P-TR](#) [CLT-105-02-G-D](#) [CLT-132-02-L-D-A](#) [CLT-102-02-G-D-TR](#) [CLT-105-02-L-D-A-K-TR](#) [CLT-102-02-G-D-BE](#) [CLT-102-01-L-D](#) [CLT-102-02-F-D-BE-TR](#) [CLT-106-02-L-D-BE-A](#) [CLT-120-02-L-D](#) [CLT-108-02-F-D-A-K-TR](#) [CLT-107-02-G-D-BE](#) [CLT-103-02-L-D-BE](#) [CLT-105-02-L-D-BE](#) [CLT-102-02-L-D-TR](#) [CLT-113-01-F-D](#) [CLT-111-02-L-D-A](#) [CLT-108-02-G-D-BE-A](#) [CLT-107-02-G-D](#) [CLT-106-02-L-D-BE-K-TR](#) [CLT-115-02-L-D-BE-A-K-TR](#) [CLT-107-02-F-D-BE](#) [CLT-115-01-G-D](#) [CLT-102-02-L-D](#) [CLT-109-01-F-D](#) [CLT-110-02-F-D-BE](#) [CLT-120-02-L-D-BE-A](#) [CLT-112-02-F-D-BE-A-K-TR](#) [CLT-104-02-L-D-BE-A-K-TR](#) [CLT-104-02-L-D-A-K-TR](#) [CLT-107-01-L-D](#) [CLT-103-02-F-D](#) [CLT-103-01-L-D](#) [CLT-110-02-G-D](#) [CLT-116-01-F-D](#) [CLT-110-01-L-D](#) [CLT-110-02-L-D-BE](#) [CLT-103-02-L-D-TR](#) [CLT-117-02-L-D-A](#) [CLT-106-02-G-D-A](#) [CLT-106-02-L-D-BE-A-K-TR](#) [CLT-107-02-F-D-A](#) [CLT-110-02-G-D-BE-A-K](#) [CLT-111-02-L-D-BE-A-P-TR](#) [CLT-110-01-FM-D](#) [CLT-105-02-G-D-BE-A](#) [CLT-106-02-L-D-P-TR](#) [CLT-103-02-F-D-BE-A](#) [CLT-103-02-F-D-BE](#) [CLT-105-01-L-D](#) [CLT-104-02-F-D-BE-K-TR](#) [CLT-104-02-G-D-A](#) [CLT-109-02-L-D](#) [CLT-103-02-F-D-A](#) [CLT-103-02-G-D](#) [CLT-110-02-G-D-BE](#) [CLT-110-02-L-D-A-K-TR](#) [CLT-110-02-F-D-A](#) [CLT-120-02-L-D-BE](#) [CLT-102-02-G-D-BE-TR](#) [CLT-106-02-F-D-A-K-TR](#) [CLT-104-01-L-D](#) [CLT-106-02-G-D-A-K-TR](#) [CLT-110-02-L-D](#) [CLT-108-01-F-D](#) [CLT-110-02-F-D-K-TR](#) [CLT-110-02-L-D-A](#) [CLT-105-02-L-D-BE-A](#) [CLT-115-02-F-D-A](#) [CLT-105-02-L-D-TR](#) [CLT-106-02-L-D-BE](#) [CLT-104-02-L-D-BE](#) [CLT-105-02-F-D](#) [CLT-103-02-L-D-BE-A-TR](#) [CLT-106-02-L-D-A](#) [CLT-103-02-F-D-A-TR](#) [CLT-103-02-F-D-BE-TR](#) [CLT-104-01-F-D](#) [CLT-104-02-L-D-BE-A](#) [CLT-105-01-F-D](#) [CLT-108-02-L-D-BE-A](#) [CLT-111-02-G-D-BE-A-K-TR](#) [CLT-114-02-L-D-A](#)