

C. Westoby 5-26-92  
 APPROVED BY/DATE

REV 1

**SAFETY ORGANIZATION(S).**

THIS FILTER HAS BEEN FORMALLY RECOGNIZED, CERTIFIED OR APPROVED BY THE LISTED AGENCY. THEREFORE, ALL TEST/REQUIREMENTS SPECIFIED IN THE LATEST REVISION OF THE FOLLOWING AGENCY STANDARDS HAVE BEEN MET.

- UL 544
- CSA 22.2, NO. 0.0.4, 8
- VDE 565-3

**OPERATING SPECIFICATIONS:**

- LINE VOLTAGE/CURRENT: 3 AMP., 120/250 VAC
- LINE FREQUENCY: 50-60HZ
- MAX. CASE RISE  $\theta$  RATED CURRENT: 40°C
- MAX. LEAKAGE CURRENT, EACH LINE TO GROUND: 2  $\mu$ A at 120V 60 Hz
- OPERATING AMBIENT TEMP. RANGE: 5  $\mu$ A at 250V 50 Hz

IN AN AMBIENT,  $T_a$ , HIGHER THAN 40°C, THE MAXIMUM OPERATING CURRENT,  $I_o$ , IS AS FOLLOWS:

$$I_o = I_r \sqrt{\frac{85-T_a}{45}}$$

**RELIABILITY SPECIFICATIONS:**

- STORAGE TEMPERATURE: -40°C TO +85°C
- HUMIDITY: 21 DAYS @ 40°C 95% RH
- CURRENT OVERLOAD TEST: 6 TIMES RATED CURRENT FOR 8 SECONDS

**TEST SPECIFICATIONS:**

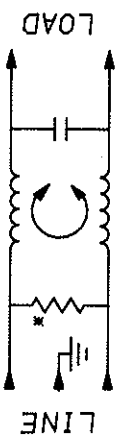
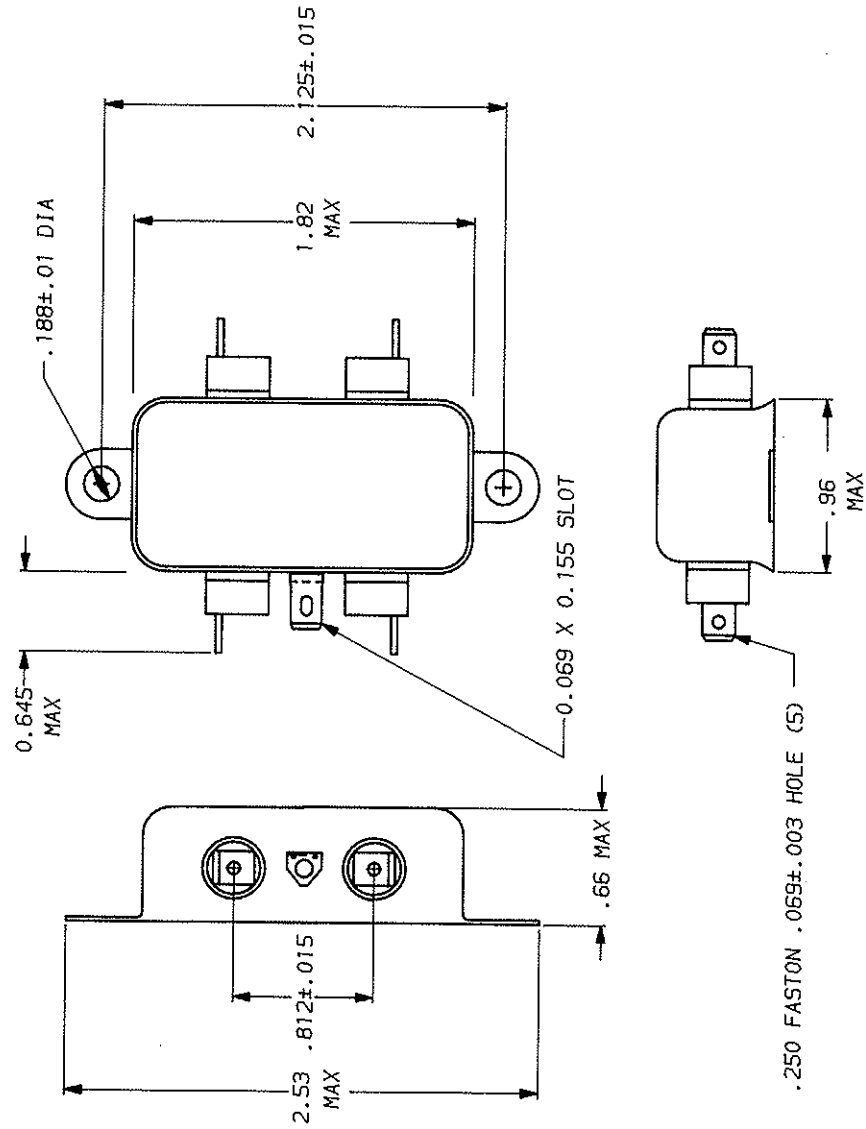
- INDUCTANCE: 1.0 mH NOMINAL
- CAPACITANCE, (MEASURED @ 1 KHZ, 0.25 VAC MAX., 25°C  $\pm$ 1°C): .01  $\mu$ F  $\pm$ 20%
- DISCHARGE RESISTOR: 1.5  $M\Omega$
- LINE/GROUND AND LINE/LINE INSULATION RESISTANCE: 6000  $M\Omega$  (MIN) AT 100 VDC
- (W/O DISCHARGE RESISTOR) 20°C AND 50% RH

**RECOMMENDED RECEIVING INSPECTION HIPOUT.**

- LINE TO GROUND: 2250 VDC FOR 1 MINUTE
- LINE TO LINE: 1450 VDC FOR 1 MINUTE

**FILTER APPROVAL:**

THE BEST WAY TO SELECT AND QUALIFY A FILTER IS FOR YOUR ENGINEERING TO TEST THE UNIT IN YOUR EQUIPMENT.



FREQUENCY MHz	50 $\mu$ - 50 $\mu$ (MINIMUM) INSERTION LOSS						
	.15	.5	1	5	10	20	30
COMMON	18	27	30	30	27	22	18
dB							

This document is proprietary to CORCOM INC. and is not to be reproduced nor used for manufacturing purposes except on CORCOM's order or prior written consent.



POWER LINE FILTER

AS SUPPLIED

FINISH: AS SUPPLIED

DATE	REV.
9-12-89	1
PREPARED BY	DESIGNER
TDL	CW
SCALE	DWG. NO.
NTS	3EH1.01

\*RESISTOR ADDED TO PRODUCT BUILT AFTER 3-30-92 (9212).

# Mouser Electronics

Authorized Distributor

Click to View Pricing, Inventory, Delivery & Lifecycle Information:

[TE Connectivity:](#)

[3EH1](#)