

- NOTES:
1. CRIMP CONTACTS SUPPLIED UNASSEMBLED.
  2. REFER TO DRAWING HPSFMISTD FOR CONTACT PATTERNS.
  3. DIMENSIONS ARE REFERENCE ONLY, IN INCHES [mm], WITHIN ±0.015 UNLESS OTHERWISE NOTED.

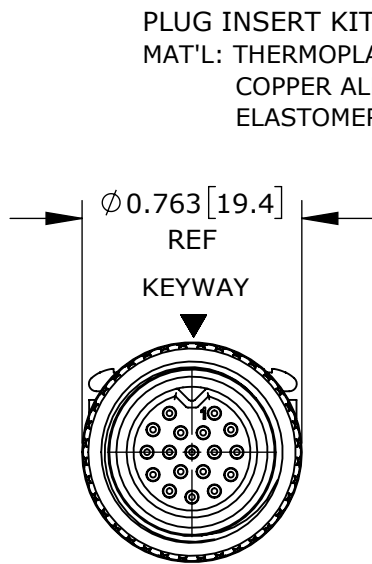
**CABLE-END CONNECTOR PART NUMBERS:**

**S F 6 9 8 X - X P G - 5 X X**

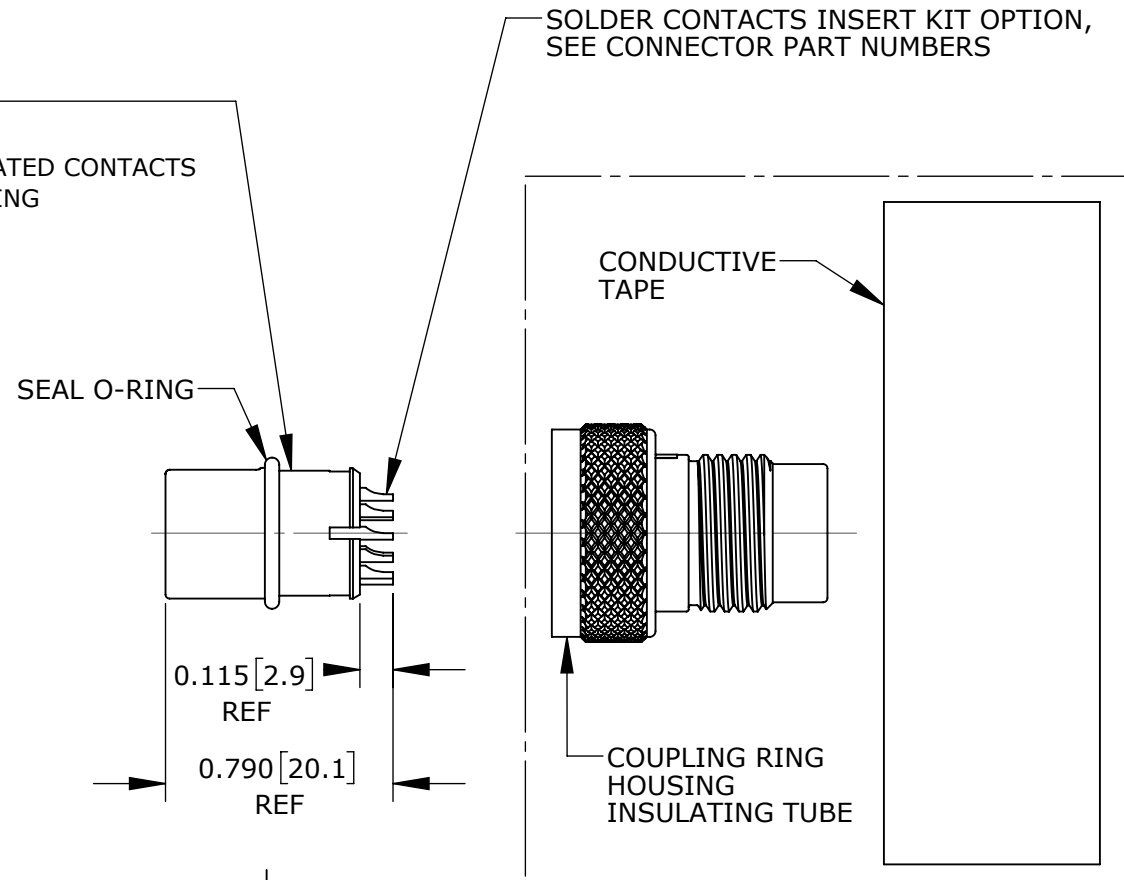
BACKSHELL KIT:  
 520 = BACKSHELL WITH  
 0.220 [5.6] GROMMET I.D.  
 530 = BACKSHELL WITH  
 0.330 [8.4] GROMMET I.D.

# OF CONTACTS: 9 - 18

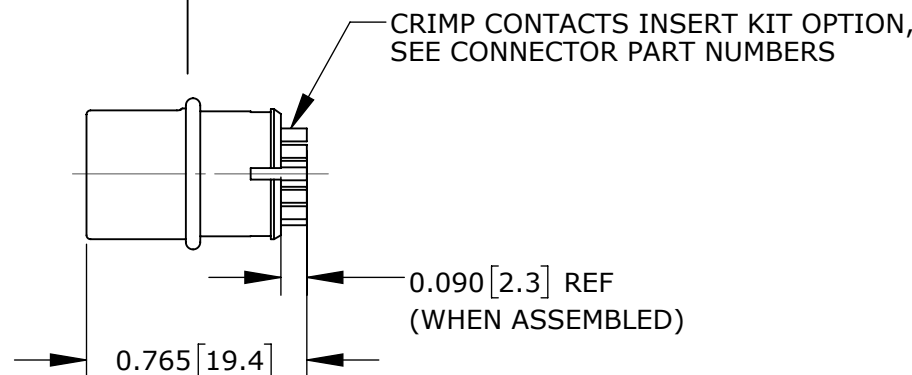
CONTACTS STYLE:  
 0 = CRIMP  
 2 = SOLDER



**FACE VIEW**  
SF6982-18PG-520 SHOWN



PLUG ASSEMBLY KIT  
 MAT'L: COPPER ALLOY, NICKEL PLATED HOUSING & COUPLING RING,  
 NICKEL/COPPER/POLYESTER FABRIC WITH CONDUCTIVE ADHESIVE TAPE,  
 MYLAR INSULATING TUBE

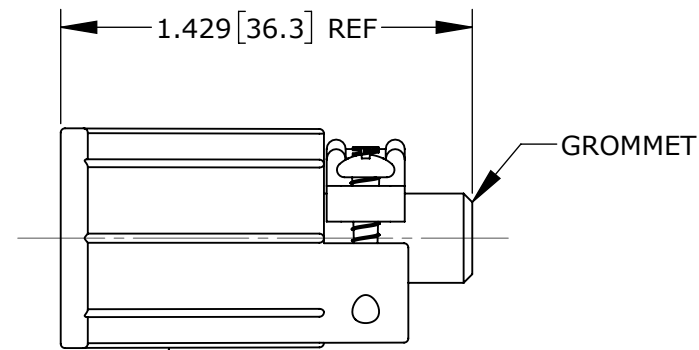


**CUSTOMER APPROVAL**

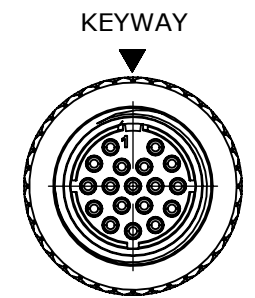
THIS DOCUMENT CONTAINS CONFIDENTIAL INFORMATION PROPRIETARY TO CONXALL CORPORATION. ANY REPRODUCTION, DISCLOSURE, OR USE OF THIS DOCUMENT /INFORMATION IS EXPRESSLY PROHIBITED UNLESS AUTHORIZED IN WRITING BY CONXALL CORPORATION.

APPROVED BY: \_\_\_\_\_  
 DATE: \_\_\_\_\_

**RoHS COMPLIANT**



BACKSHELL KIT  
 MAT'L: THERMOPLASTIC SHELL & STRAP,  
 ELASTOMERIC GROMMET,  
 STAINLESS STEEL SCREWS



**WIRING VIEW**  
SF6982-18PG-520 SHOWN  
WITHOUT BACKSHELL

CUSTOMER PRINT

PART NUMBER: SF698X-XPG-5XX

0A	PNK	2-8-18	DRAWING CREATED PER PDR17006	
REV.	INIT.	DATE	DESCRIPTION	
	PNK	2-8-18	ALL INFORMATION ILLUSTRATED IS THE PROPERTY OF CONXALL CORPORATION. UNAUTHORIZED DUPLICATION OR DISTRIBUTION OF THIS DOCUMENT IS PROHIBITED.	
APPROVED BY:			 601 E. WILDWOOD VILLA PARK, IL 60181	
CHECKED BY:				
APPROVED BY:			TITLE: CABLE-END CONNECTOR	
SCALE: NTS			9-18 #26 PIN CONTACTS	
SIZE: B			SHIELDED MINI-CON-X	
SHEET: 1 OF 1			STANDARD PRODUCT	
FILE: SF698X-XPG-5XX_CD			CUSTOMER: SF698X-XPG-5XX	
DIRECTORY: SLW			PART NUMBER: SF698X-XPG-5XX	
				REV: 0A

# Mouser Electronics

Authorized Distributor

Click to View Pricing, Inventory, Delivery & Lifecycle Information:

## Switchcraft:

[SF6980-12PG-520](#) [SF6982-15PG-520](#) [SF6982-15PG-530](#) [SF6982-18PG-520](#) [SF6982-18PG-530](#) [SF6980-15PG-520](#) [SF6980-12PG-530](#) [SF6980-15PG-530](#) [SF6980-18PG-520](#) [SF6980-18PG-530](#) [SF6982-12PG-520](#) [SF6982-12PG-530](#)