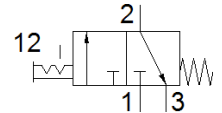
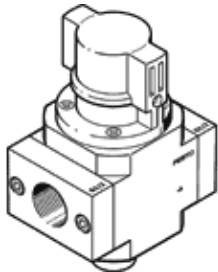


# on-off valve HE-1/2-D-MIDI

Part number: 162810  
Classic

FESTO

For service units, with threaded connecting plate  
Modern alternatives can be found by entering the first four characters of the type code in the search field.



## Data sheet

| Feature                                 | Value   |
|---|---|
| Design structure                        | Piston slide  |
| Type of actuation                       | manual  |
| Sealing principle                       | soft  |
| Exhaust-air function                    | not throttleable  |
| Manual override                         | None  |
| Valve function                          | 3/2 bistable  |
| Operating pressure                      | 0 ... 16 bar  |
| C value                                 | 17 l/sbar   |
| b value                                 | 0.3   |
| Standard nominal flow rate              | 3,600 l/min   |
| Operating medium                        | Compressed air in accordance with ISO8573-1:2010 [7:4:4]<br>Inert gases     |
| Note on operating and pilot medium      | Lubricated operation possible (subsequently required for further operation) |
| Corrosion resistance classification CRC | 2 - Moderate corrosion stress   |
| Materials note                          | Conforms to RoHS  |
| Medium temperature                      | -10 ... 60 °C   |
| Ambient temperature                     | -10 ... 60 °C   |
| Maritime classification                 | see certificate   |
| Mounting type                           | Line installation<br>with accessories                                       |
| Assembly position                       | Any   |
| Flow direction                          | non reversible  |
| Product weight                          | 511 g   |
| Pneumatic connection, port 1            | G1/2  |
| Pneumatic connection, port 2            | G1/2  |
| Pneumatic connection, port 3            | G1/4  |
| Air purity class at output              | Compressed air in accordance with ISO8573-1:2010 [7:4:4]<br>Inert gases     |
| Material seals                          | NBR   |
| Material housing                        | Aluminium die cast  |