

PLEASE CHECK WWW.MOLEX.COM FOR LATEST PART INFORMATION

Part Number: [1063973010](#)
Status: **Active**
Overview: [Optical Connectivity Solutions](#)
Description: LC2+ Connector Duplex, Multimode, 127µm Ceramic PC Ferrule, 2.00mm Simplex Cable, White Housing, Straight Boot

Documents:

[Drawing \(PDF\)](#) [RoHS Certificate of Compliance \(PDF\)](#)

General

| | |
|--------------------|--|
| Product Family | Fiber Optic Connectors |
| Series | 106397 |
| Cable Size | 2.00mm |
| Material - Housing | N/A |
| Mode | Multimode |
| Overview | Optical Connectivity Solutions |
| Product Name | LC2+ |
| UPC | 883906919849 |
| Wire/Cable Type | Duplex |

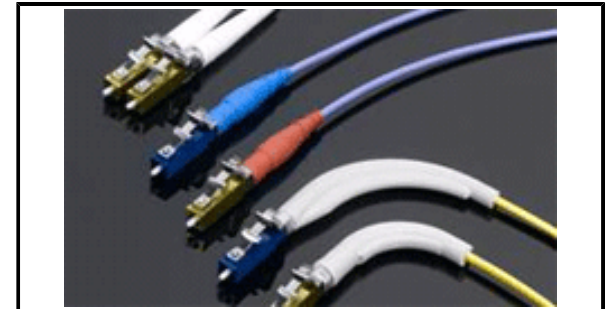
Physical

| | |
|-------------------------------|----------|
| Alignment Sleeve | N/A |
| Angled Physical Contact (APC) | No |
| Boot Color | White |
| Boot Type | Straight |
| Color - Resin | White |
| Ferrule Hole Size | 127µm |
| Ferrule Material | Ceramic |
| Gender | Plug |
| Mounting Style | Adhesive |
| Net Weight | 4.030/g |
| Ports | 2 |

Material Info

Reference - Drawing Numbers

| | |
|---------------|--------------------|
| Sales Drawing | SD-106397-3000-001 |
|---------------|--------------------|



Series image - Reference only

EU ELV

Not Relevant

EU RoHS

Compliant with Exemption 6(c)

REACH SVHC

Contained Per - D(2020)9139-DC (19 Jan 2021)

Lead

Halogen-Free

Status

Not Low-Halogen

For more information, please visit [Contact US](#)

China ROHS

50 Image

ELV

Not Relevant

RoHS Phthalates

Not Contained

Search Parts in this Series

[106397](#) Series

PLEASE CHECK WWW.MOLEX.COM FOR LATEST PART INFORMATION

Mouser Electronics

Authorized Distributor

Click to View Pricing, Inventory, Delivery & Lifecycle Information:

[Molex:](#)

[106397-3010](#)