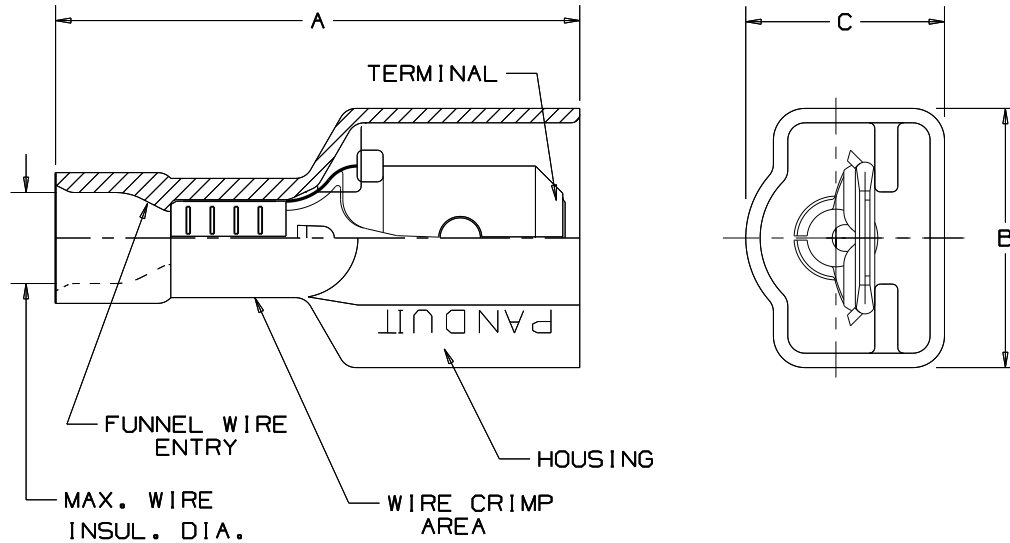


THIS COPY IS PROVIDED ON A RESTRICTED BASIS AND IS NOT TO BE USED IN ANY WAY DETRIMENTAL TO THE INTERESTS OF PANDUIT CORP.

NOTES:

1. UL LISTED AND CSA CERTIFIED FOR:
  - A. 600V MAX. VOLTAGE RATING.
  - B. 221°F (105°C) MAX. TEMP. RATING (CSA).
  - C. 257°F (125°C) MAX. TEMP. RATING (UL).
  - D. STRANDED COPPER WIRE ONLY.
2. MATERIAL:
  - A. STAMPING-CDA 260 BRASS, NICKEL PLATED
  - B. HOUSING-TYPE 6/6 NYLON
3. DIMENSIONS IN BRACKETS ARE IN mm OR mm<sup>2</sup>
4. COLORS ARE TRANSLUCENT
5. WIRE STRIP LENGTH:  $9/32^{+1/32}_{-0}$  (7.1<sup>+8</sup><sub>0</sub>)
6. SEE [www.panduit.com](http://www.panduit.com) FOR PART NUMBER SUFFIX DESIGNATION FOR PACKAGE SIZE.



PART NUMBER	TAB SIZE	WIRE RANGE AWG	COLOR (note 4)	MAX. INSUL.	DIMENSIONS in			CRIMP TOOLS
					A ±.03	B ±.02	C ±.02	
DNF18-250F1M	.250 X .032 (6.3 X 0.8)	22-18 (0.5-1.0)	RED	.133 (3.38)	.90 (22.9)	.42 (10.7)	.27 (6.9)	CT-100A* (*DNF18 ONLY) CT-520 CT-600-A CT-1525 CT-2500
DNF14-250F1M	.250 X .032 (6.3 X 0.8)	16-14 (1.5-2.5)	BLUE	.158 (4.01)	.90 (22.9)	.42 (10.7)	.27 (6.9)	



LISTED  
587H  
E52164



CERTIFIED  
LR31212

**PANDUIT** CORP.

TINLEY PARK, ILLINOIS

LOOSE PC. FULLY INSULATED MALE DISCONNECT  
.250 X .032

REV	DATE	BY	DESCRIPTION	PM	CUST
08	8/11	SHOR	MODIFIED NOTE #6, ADDED CRIMP TOOLS		

DRAWN BY	JV	CHK'D	LM	SCALE		DRAWING NO.	A41325
----------	----	-------	----	-------	--	-------------	--------