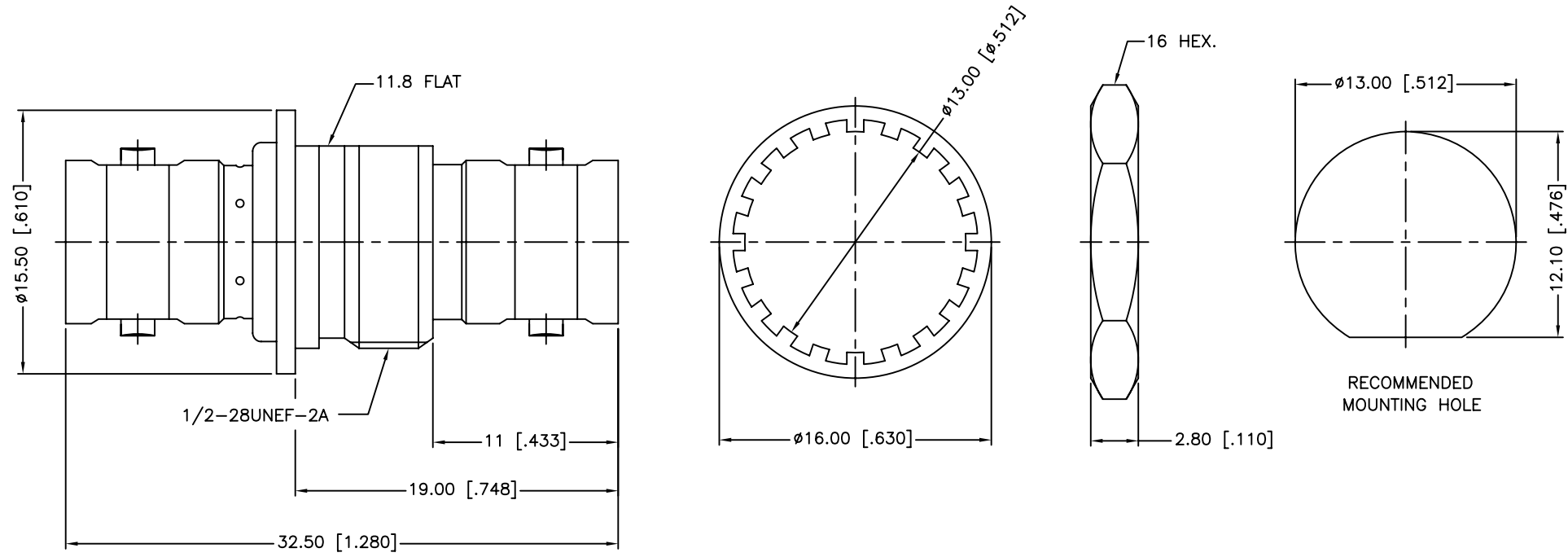


REV.	DATE	ECR NO.	DESCRIPTION
NC	06/15/98	XXXXXX	INITIAL RELEASE
A	05/13/08	100015	UPDATE DRAWING FORMAT
B	06/21/11	2185	ADD NOTE 1, 2, 3



1. IMPEDANCE: 50 OHMS
2. FREQUENCY RANGE: 0-4 GHz
3. MAX. PANEL THICKNESS: 4.5MM

DESCRIPTION	MATERIAL	FINISH	QTY	
6	HEX NUT	BRASS	NICKEL	1
5	LOCK WASHER	BRASS	NICKEL	1
4	INSULATOR	DELRIN	NATURAL	1
3	CONTACT PIN	PHOSPHOR BRONZE	GOLD	1
2	INSULATOR	DELRIN	NATURAL	1
1	BODY	BRASS	NICKEL	1

APPROVALS		DATE
DRAWN	M.ZHANG	06/21/11
CHECKED		
ISSUED		
SHEET	1 OF 1	
CAD FILE	C:/CONNEX/112439.DWG	

<b>Amphenol Connex</b>			
PART DESCRIPTION <b>BNC FEMALE TO FEMALE BULKHEAD ISOLATED ADAPTOR</b>			
PART NO.		<b>112439</b>	
DWG. NO.	112439.DWG	REV.	B
SIZE	A	SCALE	NA

UNLESS OTHERWISE SPECIFIED DIMENSIONS ARE IN MILLIMETERS. DIMENSIONS IN [ ] ARE IN INCHES AND FOR CUSTOMER REFERENCE ONLY.

UNLESS OTHERWISE SPECIFIED TOLERANCES FOR MILLIMETERS ARE:  
0.5 - 8mm ± 0.20mm  
8 - 30mm ± 0.40mm  
30 - 120mm ± 0.50mm

UNLESS OTHERWISE SPECIFIED TOLERANCES FOR INCHES ARE:  
.020 - .315 = ± 0.007"  
.315 - 1.180 = ± 0.015"  
1.180 - 4.724 = ± 0.020"

DO NOT SCALE DRAWING

# Mouser Electronics

Authorized Distributor

Click to View Pricing, Inventory, Delivery & Lifecycle Information:

[Amphenol:](#)

[112439](#)