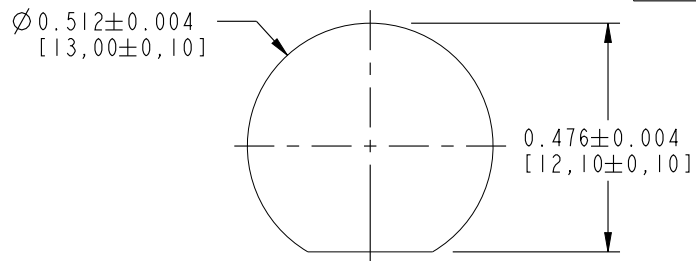


NOTES:

- MATERIALS AND FINISHES:
TNC STR PLUG IP 67 - BRASS, NICKEL PLATING
TNC STR BHD JACK IP 67 - BRASS, NICKEL PLATING
CABLE - LMR 200
- ELECTRICAL:
A. IMPEDANCE: 50 OHM
- PACKAGING:
A. QUANTITY: SINGLE PACK
B. MARKING: BAG TO BE MARKED
"AMPHENOL RF, 95-850-221-XXX AND DATE CODE"

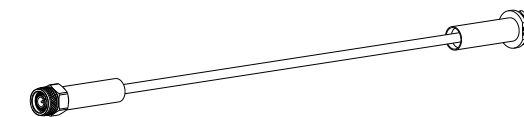


RECOMMENDED MOUNTING HOLE DIMENSIONS

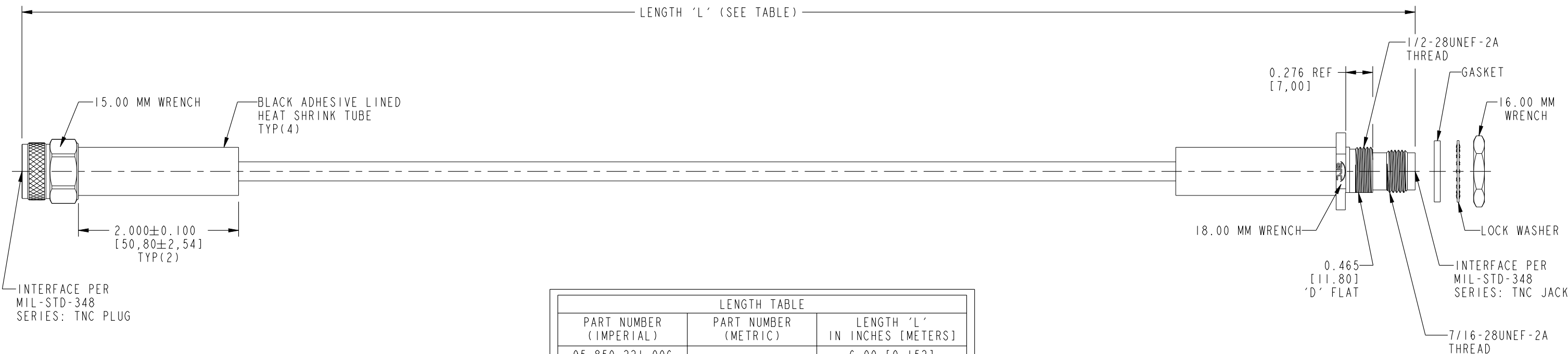
THIRD ANGLE PROJ.

REVISIONS

REV	DESCRIPTION	DATE	ECO	APPR
A	RELEASE TO MFG.	19-Feb-19	10562	VR



SCALE 0.250



LENGTH TABLE		
PART NUMBER (IMPERIAL)	PART NUMBER (METRIC)	LENGTH 'L' IN INCHES [METERS]
95-850-221-006	-	6.00 [0.152]
-	95-850-221M025	9.84 [0.250]
95-850-221-012	-	12.00 [0.305]
95-850-221-018	-	18.00 [0.457]
-	95-850-221M050	19.69 [0.500]
95-850-221-024	-	24.00 [0.610]
-	95-850-221M075	29.53 [0.750]
95-850-221-036	-	36.00 [0.914]
-	95-850-221M100	39.37 [1.000]
95-850-221-048	-	48.00 [1.219]
-	95-850-221M200	78.74 [2.000]
-	95-850-221M400	157.48 [4.000]

TOLERANCE TABLE	
LENGTH IN INCHES/FT [METERS]	TOLERANCE
0" - 23.90" [0 - 0.607]	±0.25" [0.006]
24.00" - 59.00" [0.610 - 1.499]	±0.50" [0.013]
5.0' - 24.9' [1.524 - 7.617]	±2.5%
25.0' & UP [7.620 & UP]	±5.0%

DESIGN REQUIREMENTS:

- | | |
|---|--|
| <input checked="" type="checkbox"/> FREQUENCY: DC - 6 GHz | <input checked="" type="checkbox"/> CONTINUITY |
| <input type="checkbox"/> VSWR: _____ : 1 MAX. | <input checked="" type="checkbox"/> HI-POT: 750 VRMS |
| <input type="checkbox"/> INS. LOSS: _____ dB MAX. | <input type="checkbox"/> OTHER |

CUSTOMER OUTLINE DRAWING
ALL OTHER SHEETS ARE FOR INTERNAL USE ONLY

UNLESS OTHERWISE SPECIFIED, DIMENSIONS ARE IN INCHES AND TOLERANCES ARE: 2 PLACE DECIMAL 3 PLACE DECIMAL ANGLES ±.015 (0,381 mm) ±.005 (0,127 mm) ± 1°	MATERIAL	DRAWN	DATE	TITLE TNC STR PLUG IP 67 TO TNC STR BHD JACK IP 67 USING LMR 200 CABLE VARIOUS LENGTH		Amphenol RF www.amphenolrf.com	
	SEE NOTES	VIJAY N M	31-Jan-19				
NOTICE - These drawings, specifications, or other data (1) are, and remain the property of Amphenol corp. (2) must be returned upon request; and (3) are confidential and not to be disclosed to any person other than those to whom they are given by Amphenol Corp. the furnishing of these drawings, specifications, or other data by Amphenol Corp., or to any other person to anyone for any purpose is not to be regarded by implication or otherwise in any manner licensing, granting rights to permitting such holder or any other person to manufacture, use or sell any product, process or design, patented or otherwise, that may in any way be related to or disclosed by said drawings, specifications, or other data.	REFERENCE	ENGINEER	DATE	DRAWING NO. 95-850-221-XXX ITEM NO. 95-850-221-XXX		PART NO. 95-850-221-XXX	
	EAR # 8892	VIJAY N M	31-Jan-19				
	CONFIGURATION LEVEL: In Work	APPROVED	DATE		SCALE: 1.0:1.0 SHEET 2 OF 2		DWG SIZE
FINISH	K.CAPOZZI	19-Feb-19				B	A

Mouser Electronics

Authorized Distributor

Click to View Pricing, Inventory, Delivery & Lifecycle Information:

Amphenol:

[095-850-221M200](#) [095-850-221M075](#) [095-850-221-024](#) [095-850-221M400](#) [095-850-221-048](#) [095-850-221M025](#)
[095-850-221-018](#) [095-850-221-012](#) [095-850-221-036](#) [095-850-221M050](#) [095-850-221M100](#) [095-850-221-006](#)