



© 2016 AFCl



Amphenol
FCI



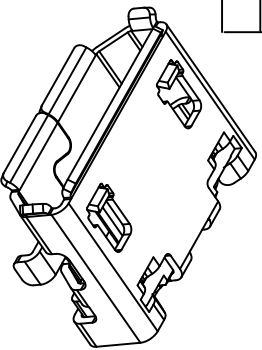
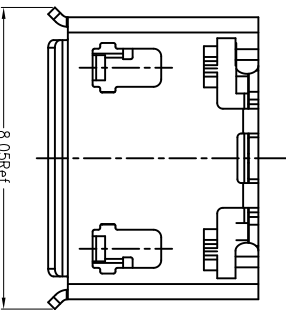
31



4

PART NUMBER
10118194-0X0XLF

Item	Title	Q'TY
1	Shell	1
2	Terminal	5
3	Insert/Molding	1



PRODUCT NUMBER DESCRIPTION
10118194- X X X X L F

1-CONTACT AREA: 0.76um AU
2-CONTACT AREA: GOLD FLASH

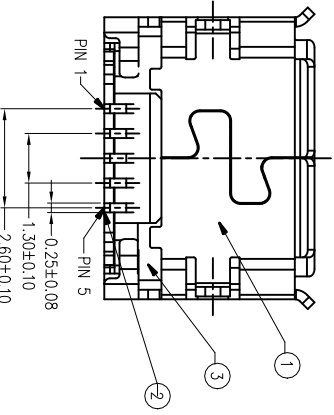
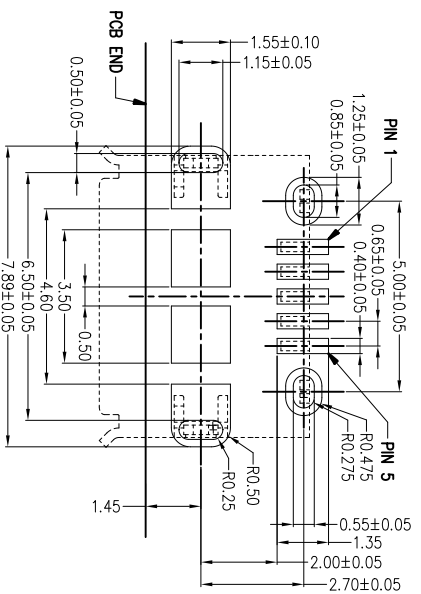
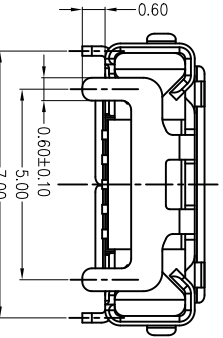
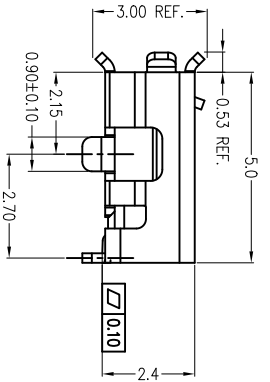
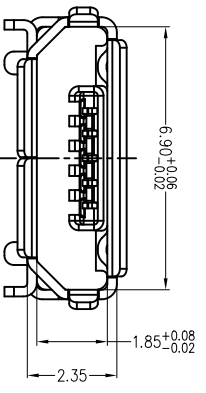
0-WITH FLANGE SEE SHEET 1
0-WITHOUT FLANGE SEE SHEET 2

0-PLASTIC REEL

0-CARDBOARD REEL

0-COLD SEALING

0-HOT SEALING



REFERENCE PCB LAYOUT

mat'l. code		surface	tolerance	projection	product family
tr	ecn no/dr	ASME Y14.4	ASME Y14.5	specified	HPL_511
A	LS	10/21/11	X±0.38	MM	MICRO USB B TYPE RECEPTACLE
B	EX-N-23501	LQ	3/11/16	XXX±0.25	
C	EX-N-25208	LZ	9/29/16	X±.2	
D	EX-N-27008	LZ	05/16/17	XXX±0.10	
eng		JASON_HSU	05/21/11	Amphenol FCI	
chr		JASON_HSU	05/21/11	type Product Customer Drawing	
ppd		GARY_HSEH	05/21/11	sheet of 2 size A4	
sheet	revision	D			
index	sheet	1			

form: A4mmXlc-2016-02-24

1

2

3

4

B

B

A

A

5



© 2016 AF CI

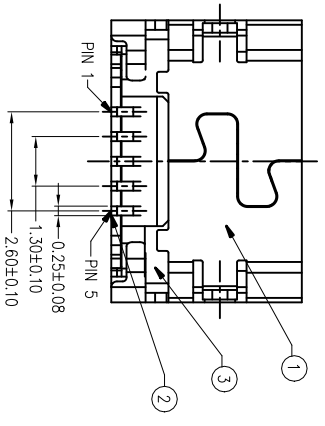
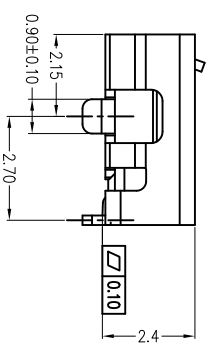
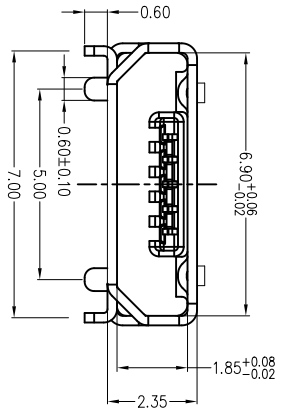
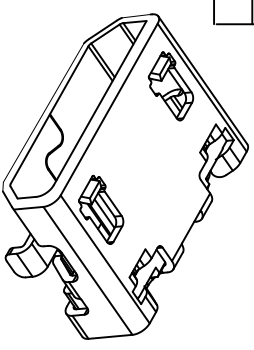
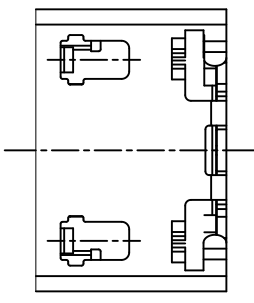


Amphenol
FCI

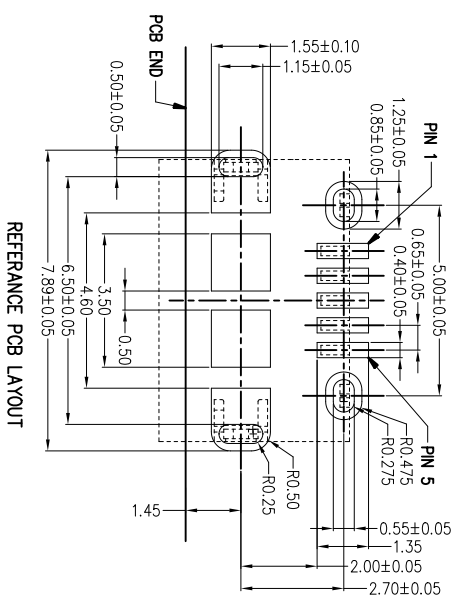


PART NUMBER
10118194-0X1XLF

Item	Title	Q'TY
1	Shell	1
2	Terminal	5
3	InsertMolding	1



- NOTES:
- MATERIAL:
HOUSING: HIGH THERMOPLASTIC RESIN, UL94V-0, COLOR: BLACK
TERMINAL: COPPER ALLOY
SHELL: STAINLESS STEEL WITH FLANGE OR WITHOUT FLANGE
 - FINISH:
CONTACT AREA: SEE PRODUCT MEMBER DESCRIPTION
CONTACT SOLDER AREA: GOLD FLASH
SHELL: MATTE TIN PLATED
- TYPE
UNDER NICKEL PLATED ALL OVER.
PRODUCT SPECIFICATION: GS-12-641.
PACKAGING SPECIFICATION: GS-14-2180.
THE "LF" MEANS FOR LEAD FREE AND CAN WITHSTAND EXPOSE TO 260°C PEAK TEMPERATURE FOR 10 SECONDS IN IR REFLOW PROCESS.



form: A4mmXlc-2016-02-24

1

2

3

4

B

A

1 | 2

3 |

4

mat'l. code	surface	tolerance	projection	product family
	ASME Y14.5	ASME Y14.5		HPL_511
tr	ecn no	dr	date	
D				
	tolerances unless otherwise	specified		
	angle	X±0.38		
	hole	.XX±0.25		
	X±.2	.XXX±0.10	scale 1:1	
dr	JASON_JSU	05/21/11		
eng	JASON_JSU	05/21/11		
chr	JASON_JSU	05/21/11		
ppd	GARY_HSEH	05/21/11		
sheet	revision	D		
index	sheet	2		

5

B