



UNSCREENED PANELS



PCB Technology for Gigabit Transmission

Brand-Rex 19" (483mm) *GigaPlus* rack mounted patch panel offers a proven Enhanced Category 5 performance using patented state of the art printed circuit technology. All outlets are numerically identified with an additional writeable surface for ease of port naming. Each panel is supplied with cable ties, panel mounting accessories and installation instructions.

Panel Type:	19" (483mm) rack mountable fitting
Height:	16,24 port 1U (44.5mm) 32,48 port 2U (89.0mm)
Depth:	33.50mm
Colour:	BLACK or RAL7035 GREY
OUTLET Style:	Unkeyed RJ45
Port Contacts:	Phosphor Bronze
Plating:	50 micro inches of gold over 100 micro inches of Nickel
IDC:	European style LSA or 110 Style Insulation Displacement Connectors (IDC)
IDC contact:	Phosphor Bronze
Wiring Standard:	EIA/TIA 568B
Conformance:	ISO/IEC 11801:1995(E), EIA/TIA TSB40A and ENHANCED CAT5 (CAT5e) ANSI/EIA-568A

GigaPlus cables and components have been designed to work together, configured as a channel. Contact a MillenniumM partner or Brand-Rex for details of how to obtain a GigaPlus system warranty.



Brand-Rex

Brand-Rex Limited
Viewfield Industrial Estate
Glenrothes, Fife, Scotland KY6 2RS
Tel: +44 (0) 1592 772124 Fax: +44 (0) 1592 775314
www.brand-rex.com

SHEET REF. NO. 5799/October 1999



UNSCREENED PANELS

Comparison of electrical requirements for connecting hardware between Cat5 and Cat5e

Frequency MHz	Attenuation (max)		NEXT Loss (min)		ELFEXT (min)		Return LOSS (min)	
	dB	dB	dB	dB	dB	dB	dB	dB
	Cat5	Cat5e	Cat5	Cat5e	Cat5	Cat5e	Cat5	Cat5e
1	0.1	0.1	65	65.0	N/S	65.0	23	30
4	0.1	0.1	65	65.0	N/S	63.1	23	30
8	-	0.1	-	64.9	N/S	57.0	-	30
10	0.1	0.1	60	63.0	N/S	55.1	23	30
16	0.2	0.2	56	58.9	N/S	51.0	23	30
20	0.2	0.2	54	57.0	N/S	49.1	23	30
25	-	0.2	-	55.0	N/S	47.1	-	30
31.25	0.2	0.2	50	53.1	N/S	45.2	14	28.1
62.5	0.3	0.3	44	47.1	N/S	39.2	14	22.1
100	0.4	0.4	40	43.0	N/S	35.1	14	18

Cat5 figures taken from the ISO/IEC 11801: 1995(E)

Cat5e figures as listed in ANSI/EIA-568A for Enhanced Cat5

NOTE: Cat5e figures measure in both Common & Differential Mode



CATALOGUE No

Description

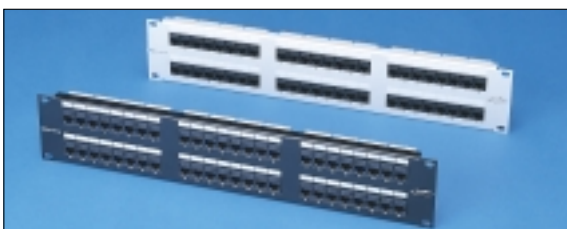
GPC5-PAT-16-U-1-001B	16 way 1U 110 IDC Black
GPC5-PAT-16-U-1-101B	16 way 1U 110 IDC Grey
GPC5-PAT-16-U-K-001B	16 way 1U LSA IDC Black
GPC5-PAT-16-U-K-101B	16 way 1U LSA IDC Grey



GPC5-PAT-24-U-1-001B	24 way 1U 110 IDC Black
GPC5-PAT-24-U-1-101B	24 way 1U 110 IDC Grey
GPC5-PAT-24-U-K-001B	24 way 1U LSA IDC Black
GPC5-PAT-24-U-K-101B	24 way 1U LSA IDC Grey



GPC5-PAT-32-U-1-001B	32 way 2U 110 IDC Black
GPC5-PAT-32-U-1-101B	32 way 2U 110 IDC Grey
GPC5-PAT-32-U-K-001B	32 way 2U LSA IDC Black
GPC5-PAT-32-U-K-101B	32 way 2U LSA IDC Grey



GPC5-PAT-48-U-1-001B	48 way 2U 110 IDC Black
GPC5-PAT-48-U-1-101B	48 way 2U 110 IDC Grey
GPC5-PAT-48-U-K-001B	48 way 2U LSA IDC Black
GPC5-PAT-48-U-K-101B	48 way 2U LSA IDC Grey