

Q search

How to select series >

How it works series >

Development Boards >

DFR0049 Analog Gas Sensor (QM-NG1)

DFR0100 DFRduino Beginner Kit For Arduino V3

DFR0133 X-Board

DFR0162 X-Board V2

DFR0188 Flymaple V1.1

DFR0182 Wireless GamePad V2.0

DFR0267 Bluno

DFR0282 Beetle

DFR0283 Dreamer Maple V1.0

DFR0296 Bluno Nano

DFR0302 MiniQ 2WD Plus

DFR0304 BLE Wireless Gamepad V2

DFR0305 RoMeo BLE

DFR0306 Bluno Mega 1280

DFR0321 Wido-WIFI IoT Node

DFR0323 Bluno Mega 2560

DFR0329 Bluno M3

DFR0339 Bluno Beetle

DFR0343 UHex Low-power Controller

Introduction

Specification

Board Overview

Instruction

Voltage Settings

FAQ

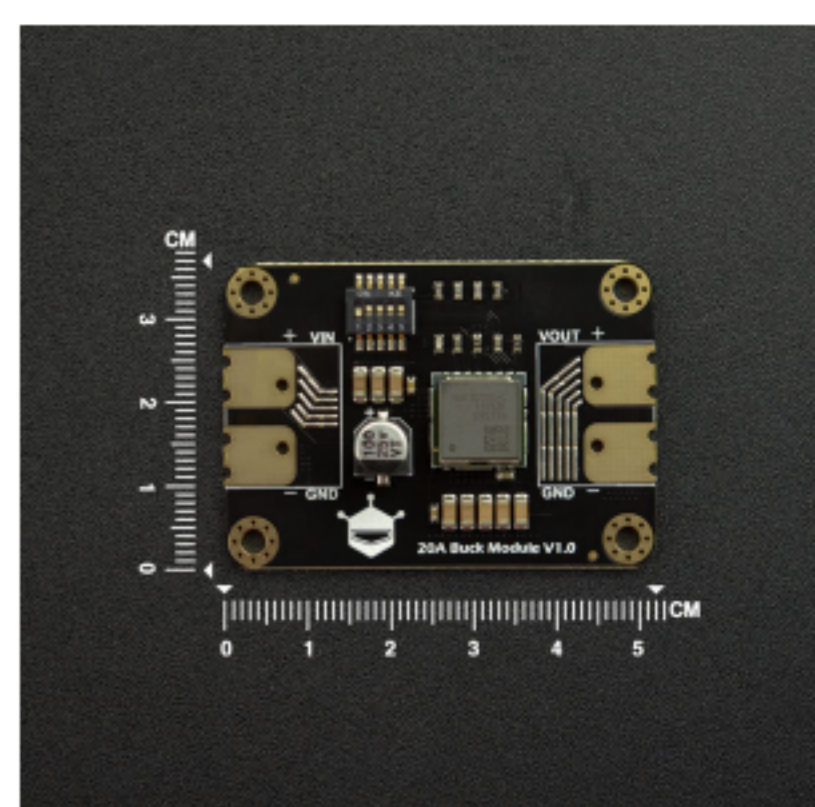
More Documents

SKU:DFR1025**Introduction**

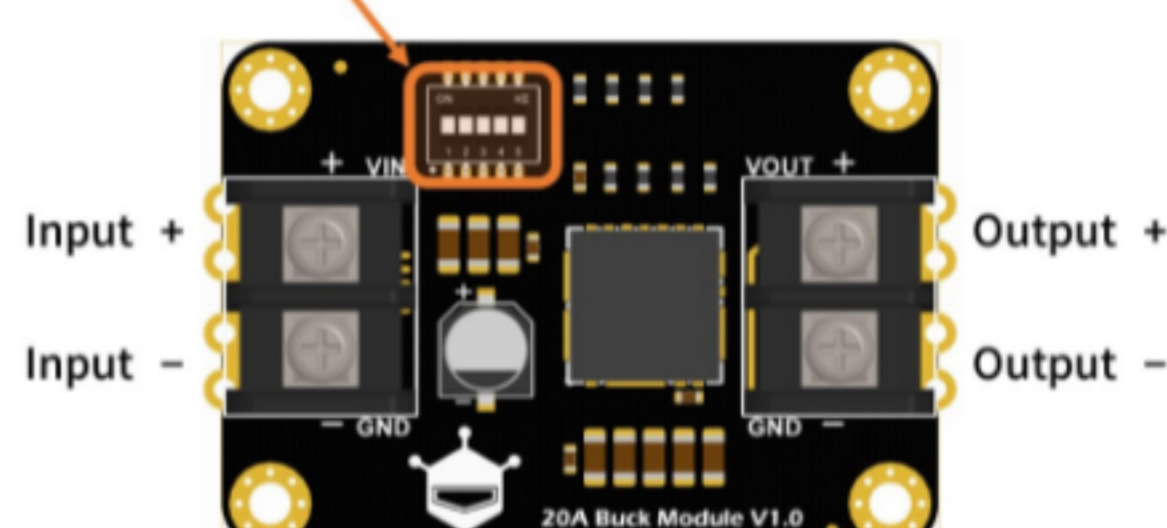
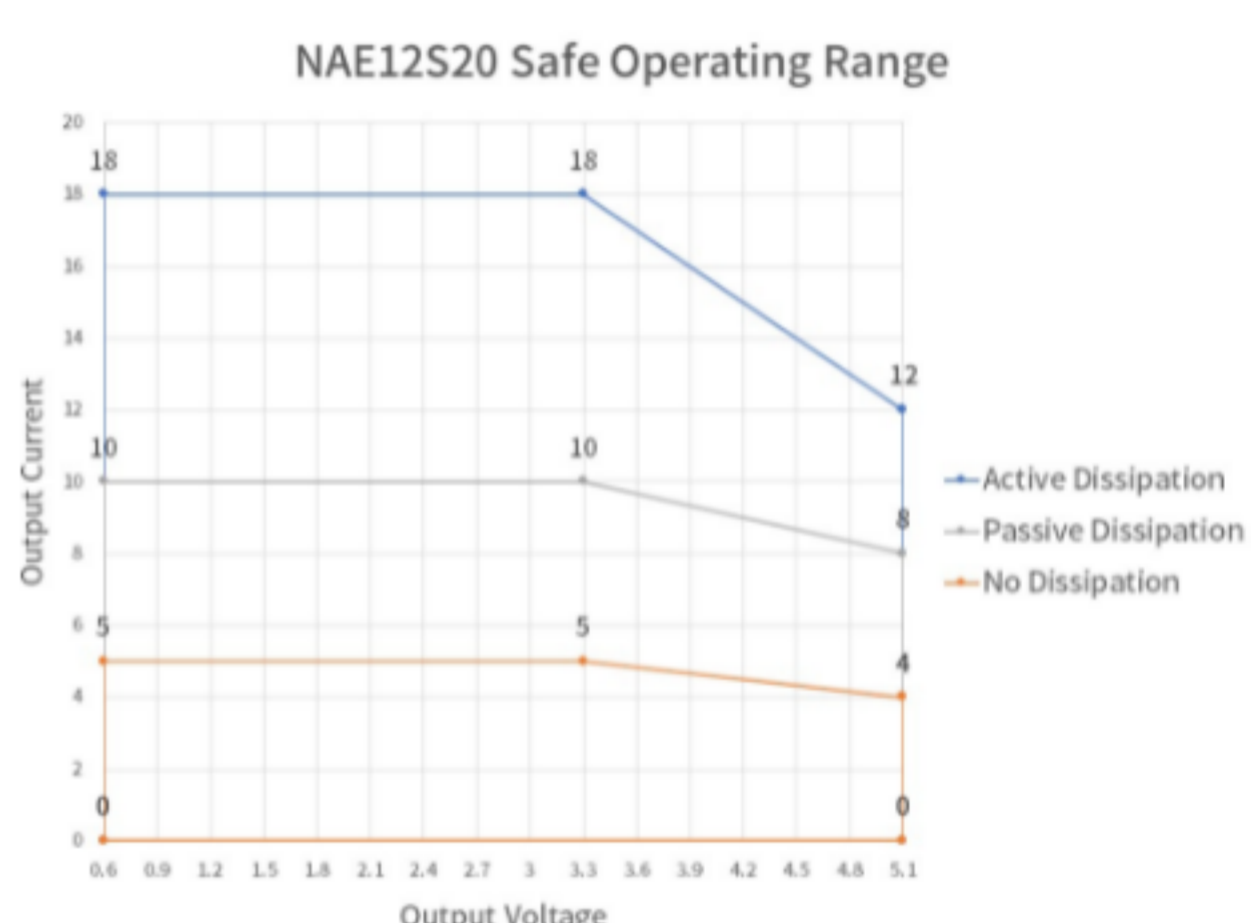
Still bothered by how to correctly power your RGB LED strip or get smooth servo movement? No worries now, this 60W DC-DC buck converter takes care of all.

This buck converter module converts high power 12V or lithium battery 11.1V to 5V output. 60W power can be available with only one such module! Featuring adjustable 0.6V-5.1V output voltage and up to 18A output current, the module can be used to drive a 5m WS2812 RGB LED strip or other device requiring low voltage and high current.

In addition, the converter incorporate protective functions like short-circuit, overload, overheat, etc., to ensure stable performance.

**Specification**

- Input Voltage: 9V-15V
- Output Voltage: 0.6V-5.1V
- Output Current: 18A(Active dissipation)
- Output Power: 60W(Active Dissipation)
- Conversion Efficiency: 92%(Typical)
- Outline Dimension: 52×37mm/2.05×1.46"

Board Overview**Voltage Adjustment Switch****Instruction****Safe Operating Range**

The parameters of the safe operating range are tested in typical experiment environments. It is recommended to measure the surface temperature of the buck converter to determine if the dissipation needs to be improved.

- Surface temperature < 80°C: the converter performs steadily
- Surface temperature in 80 - 90°C: dissipation improvement recommended
- Surface temperature >90°C: dissipation improvement is required since the overheat protection may be triggered at any time.

Voltage Settings

Voltage Settings via DIP switch.

1	2	3	4	5	Output Voltage
ON					0.6V
ON				ON	0.9V
ON			ON		1.2V
ON			ON	ON	1.5V
ON		ON			1.8V
		ON		ON	2.1V
		ON	ON		2.4V
		ON	ON	ON	2.7V
	ON				3.0V
	ON			ON	3.3V
	ON		ON		3.6V
	ON		ON	ON	3.9V
	ON	ON			4.2V
	ON	ON		ON	4.5V
	ON	ON	ON		4.8V
	ON	ON	ON	ON	5.1V

1. Please disconnect the power first when adjusting voltage settings.
2. There may be $\pm 10\%$ error in voltage, so it is recommended to use a multimeter to test and then select a suitable output voltage.

FAQ

For any questions, advice or cool ideas to share, please visit the [DFRobot Forum](#).

More Documents

- [DFR1025 Dimensional Drawings](#)

Get **DC-DC Buck Converter 60W** from DFRobot Store or [DFRobot Distributor](#).

[Turn to the Top](#)