

# SQF-P10

## Industrial CompactFlash



## Specifications

Capacity	256MB/1G/2G/4G/8G/16G/32G/64G
Flash Type	SLC/MLC
Compatibility	CF 3.0, PC Card, Socket Services
Form Factor	CF Type-I
Voltage	3.3 V / 5.0 V
Data Transfer Mode	PIO Mode-6 MWDMA Mode-2 UDMA Mode-4 (4CH UDMA5)
Sustained R/W Performance (*)	SLC 4 channel: 83/87 MB/sec SLC 2 channel: 43/40 MB/sec SLC 1 channel: 22/15 MB/sec MLC 2 channel: 43/20 MB/sec
Operation Temperature	Commercial Grade: 0 to +70° C Extended Grade: -40 to +85° C
Host interface	8/16 bit access
ECC (BCH)	Corrects up to 48 random bit errors per 2K bytes
Endurance	> 5,000,000 program/erase cycles
Shock resistance	1,500 G, Peak / 0.5 ms
Vibration resistance	20 G, Peak / 80 ~ 2000 Hz

(\*)The values are for reference only; they may change according to the flash memory used.

## Ordering Information

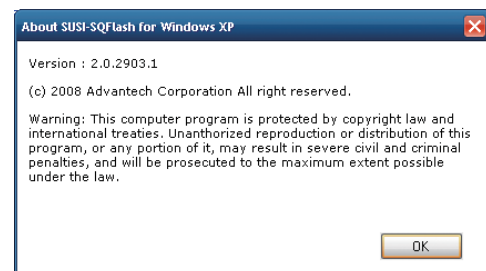
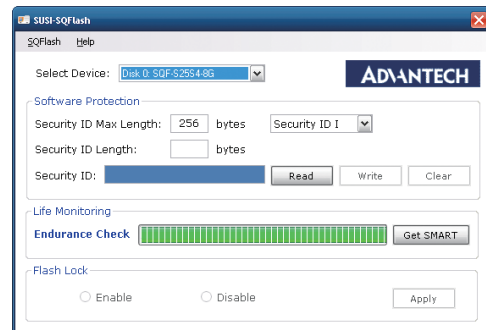
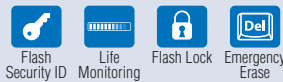
Part No.	Product Description
SQF-P10S1-XX-P8C	SQFlash SLC 256M/1G CF, 1-CH, DMA (0 ~ 70° C)
SQF-P10S2-XG-P8C	SQFlash SLC 2/4/8/16G/32G CF, 2-CH, DMA (0 ~ 70° C)
SQF-P10S1-1G-P8E	SQFlash SLC 1G CF, 1-CH, DMA (-40 ~ 85° C)
SQF-P10S2-XG-P8E	SQFlash SLC 2/4/8/16G/32G CF, 2-CH, DMA (-40 ~ 85° C)
SQF-P10S4-XG-P8C	SQFlash SLC 4/8/16G/32G/64G CF, 4-CH, DMA (0 ~ 70° C)
SQF-P10S4-XG-P8E	SQFlash SLC 4/8/16G/32G/64G CF, 4-CH, DMA (-40 ~ 85° C)
SQF-P10M2-XG-P9C	SQFlash MLC 16G/32G/64G CF, 2-CH, DMA (0 ~ 70° C)
SQF-P10M2-XG-P9E	SQFlash MLC 16G/32G/64G CF, 2-CH, DMA (-40 ~ 85° C)

Note: X stands for different capacities

## Features

- Compliant with CFA 3.0 specification
- Built-in EDC/ECC up to 48 random bit errors per 2K bytes
- Advanced wear-leveling and block management
- Shock resistance, anti-vibration and low power consumption
- GUI Management Tool & Software API Package

### GUI Management Tool & Software API Package



# Mouser Electronics

Authorized Distributor

Click to View Pricing, Inventory, Delivery & Lifecycle Information:

## Advantech:

[SQF-P10S2-32G-P8C](#) [SQF-P10S2-32G-P8E](#) [SQF-P10S2-8G-P8E](#) [SQF-P10S2-16G-P8C](#) [SQF-P10S2-8G-P8C](#)  
[SQF-P10S1-256M-P8C](#) [SQF-P10M2-16G-P9E](#) [SQF-P10M2-32G-P9C](#) [SQF-P10S4-4G-P8E](#) [SQF-P10M2-32G-P9E](#)  
[SQF-P10M2-64G-P9C](#) [SQF-P10M2-8G-P9C](#) [SQF-P10M2-8G-P9E](#) [SQF-P10M2-16G-P9C](#) [SQF-P10S4-16G-P8E](#)  
[SQF-P10S2-4G-P8C](#) [SQF-P10S1-1G-P8E](#) [SQF-P10S2-2G-P8C](#) [SQF-P10S4-32G-P8C](#) [SQF-P10S4-32G-P8E](#) [SQF-](#)  
[P10S2-2G-P8E](#) [SQF-P10S4-64G-P8C](#) [SQF-P10S1-1G-P8C](#) [SQF-P10S2-4G-P8E](#) [SQF-P10S4-64G-P8E](#) [SQF-](#)  
[P10S2-512M-P8C](#) [SQF-P10S2-16G-P8E](#) [SQF-P10M2-64G-P9E](#) [SQF-P10S1-256M-P8E](#)