



MMCX-J-P-HF-SW-EM1



MMCX-J-P-HF-SW-EM1

MMCX-SW SERIES

50 Ω MMCX SWITCHABLE JACK

SPECIFICATIONS

For complete specifications and recommended PCB layouts see www.samtec.com?MMCX-SW

Contact Material:

BeCu

Insulator Material:

PTFE

Pin and Shell Material:

Brass

Operating Temp Range:

-65 °C to +125 °C

Insulation Resistance:

500 MΩ min

Impedance:

50 Ω

Dielectric Withstanding Voltage:

250 Vrms min

Dielectric Working Voltage:

100 Vrms max

V.S.W.R.:

1.5 max

Frequency Range:

Internal: 0-3 GHz

External: 0-6 GHz

Max Cycles:

500

RoHS Compliant:

Yes

PROCESSING

Lead-Free Solderable:

Yes

Mates with:
RF316, RF178,
RF174, GRF1H-C
(-03SP1 or -03RP1)

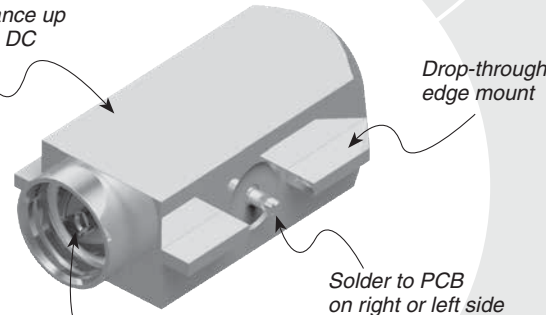
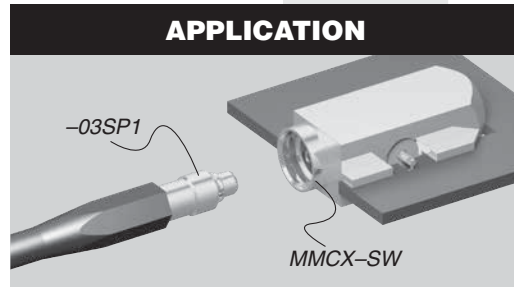
Performance up to 6 GHz DC

Drop-through edge mount

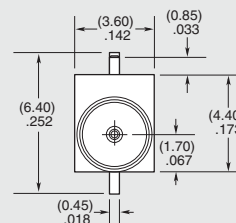
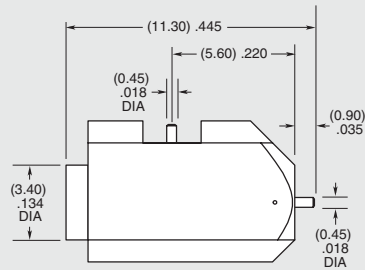
Solder to PCB on right or left side

Switches from internal antenna to external antenna when cable is mated

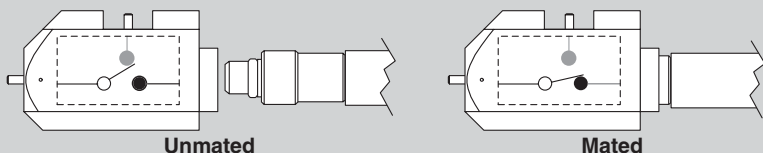
APPLICATION



MMCX	J	P	PLATING	ORIENTATION	TERMINATION	OPTION
				-SW = Switchable	-EM1 = Edge Mount	Leave blank for no Tape & Reel -TR = Tape & Reel
-HF = 30 μ" (0.76 μm) Gold center contact, 5 μ" (0.13 μm) Gold outer contact						



APPLICATION



Due to technical progress, all designs, specifications and components are subject to change without notice.