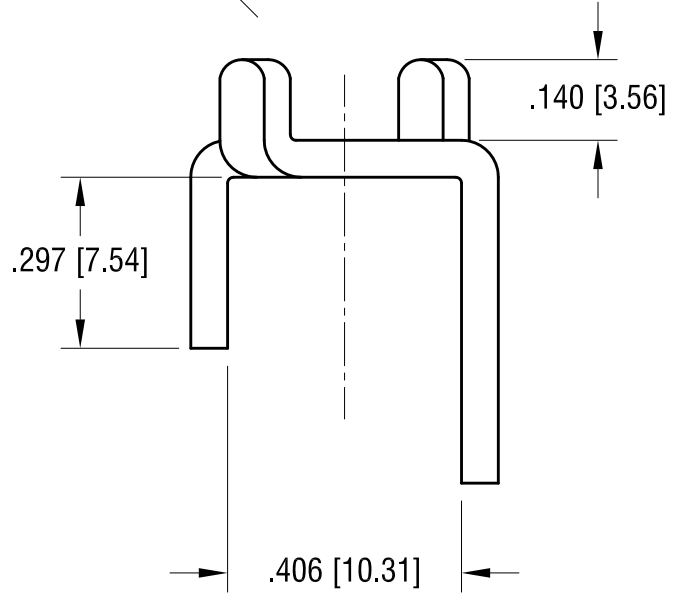
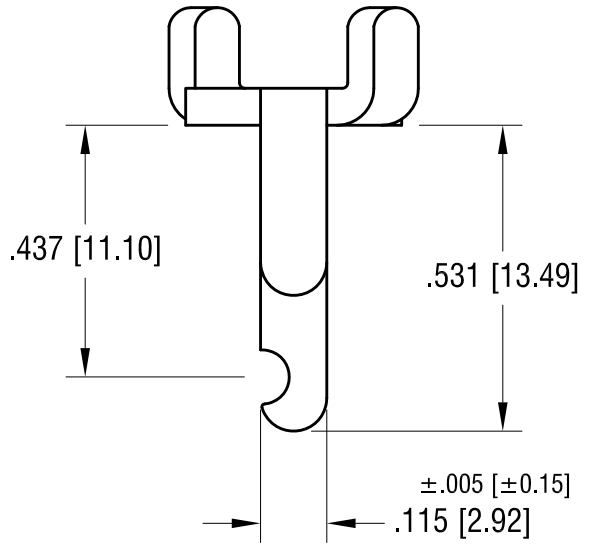
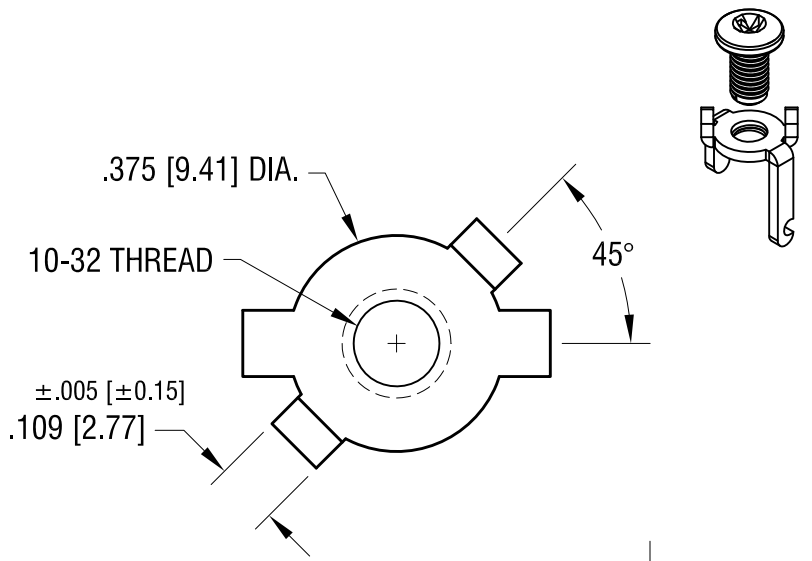
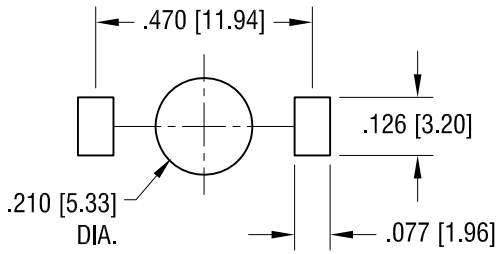


THIS DOCUMENT IS THE PROPERTY OF KEYSTONE ELECTRONICS CORP. AND SHALL NOT BE REPRODUCED, DISTRIBUTED OR USED AS A BASIS FOR MANUFACTURE WITHOUT PRIOR WRITTEN PERMISSION FROM KEYSTONE ELECTRONICS CORP.

MOUNTING DETAIL



NOTE:

1. TERMINAL:
MAT'L - .064 [1.63] TH'K BRASS, MATTE TIN PLATE
2. SCREW : ONE (1) 10-32 x 3/8 L., SUPPLIED LOOSE.
MAT'L - STAINLESS STEEL

10.09.20	WAS COMBINATION HEAD SCREW MAT'L STEEL, NICKEL PLAT CHANGE AS PER ECN 20-085	C
7.15.09	CHANGE AS PER ECN 09-104	B
1.16.08	CHANGE AS PER ECN 08-051	A
DATE	DESCRIPTION	REV.

KEYSTONE ELECTRONICS CORP.			
www.keyelco.com • NEW HYDE PARK, NY 11040 • Tel (516) 328-7500			
PART NAME		SCREW TERMINAL	
MATERIAL		AS NOTED	
FINISH		DRN BY	DATE
AS NOTED		BOONE	7.1.99
		APP'D	SCALE
		RH	3X
TOLERANCES	INCH [MM]	CODE	DWG NO.
DECIMAL	± .010 [± 0.25]	C	1208
ANGULAR	± 2°		
UNLESS OTHERWISE SPECIFIED			

Mouser Electronics

Authorized Distributor

Click to View Pricing, Inventory, Delivery & Lifecycle Information:

[Keystone Electronics:](#)

[1208](#)