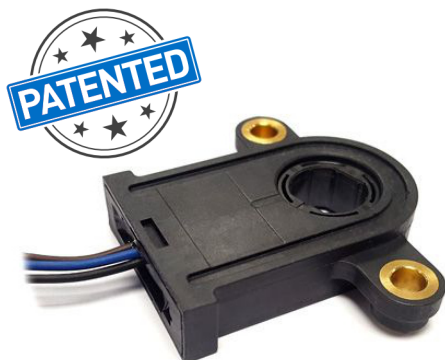


# PST-360

## Hall-Effect Through-Shaft Rotary Position Sensor



Available with

**CAN** SAE J1939



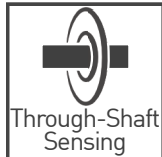
### KEY FEATURES



Non-  
contacting

#### True, contactless operation

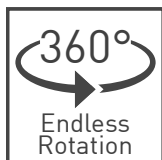
Without any gears or mechanical interfaces the sensor is easily assembled and calibrated and subject to limited wear and tear over lifetime.



Through-Shaft  
Sensing

#### Through-hole design

Allows shaft insertion from top or bottom, simple assembly and makes it even more suitable in applications where space is limited.



Endless  
Rotation

#### 360 degree absolute position feedback

Endless mechanical rotational angle without dead band, keeps the position on power loss with programmable electrical angles from 15 to 360 degrees.



#### Made for harsh environments

The rugged package protects the sensor from dust, moisture, vibration and extreme temperatures for usage in the most demanding environments.



Extra-long  
life

#### Durable and robust design

The non-contacting design allows for an extra-long product lifetime of up to 50 million cycles.



Fully  
customizable

#### Adaptable to your requirements

Programmable transfer function and switch outputs as well as different output protocols and redundancy levels available.

### DESCRIPTION

The PST-360 position sensor combines a through-shaft design with accurate absolute position feedback and a true non-contacting sensing element that does not rely on gears or other rotating parts.

This innovative and unique patented design complements the attributes of the target application and maintains the mechanical integrity of the application by design. As the sensor is mounted directly at the pivot point no levers, connecting rods or other mechanical interfaces are needed. Furthermore it adapts to shaft's eccentricity, mounting tolerances and mechanical wear over the life of the application.

The endless rotation sensor is highly configurable with a programmable angular range between 15 and 360 degrees, different signal output options and support for low and high-voltage power supply. Multi-turn configurations are available on request.

### APPLICATIONS

#### Industrial

- ▶ Autonomous warehouse robotics
- ▶ Robotics and automation feedback
- ▶ Robot arm position
- ▶ Valve monitoring
- ▶ Conveyor operation

#### Transportation

- ▶ Steering angle
- ▶ Pedal position
- ▶ Fork height and mast tilt
- ▶ Bucket position
- ▶ Hitch position
- ▶ Boom angle
- ▶ Joystick controls

#### Marine

- ▶ Steering and shifter sensor
- ▶ Engine throttle

#### Home and Building Automation

- ▶ HVAC systems

#### Medical

- ▶ Electric hospital bed
- ▶ Mobility chair steering and throttle

# PST-360

## Hall-Effect Through-Shaft Rotary Position Sensor

### MECHANICAL SPECIFICATIONS

Rotational life	Up to 50.000.000 cycles
Mechanical angular range	360° (endless rotation)
Rotor diameter <sup>1</sup>	14mm 17mm

<sup>1</sup> Other rotors on request

### ELECTRICAL SPECIFICATIONS

Linearity <sup>1</sup>	±1% absolute (±0.5% upon request)
Electrical angular range <sup>2</sup>	Programmable from 15° to 360°
Output	Analog (Ratiometric), PWM Serial Protocol (SPI) CAN SAE J1939 or SENT upon request
Switch output	Programmable upon request
Resolution	Analog, PWM SPI Up to 12 bit Up to 14 bit
Supply voltage <sup>3</sup>	5V ±10% 7V to 15V
Supply current	Single version Redundant version Typ 8.5 mA Typ 17 mA
Voltage protection	±10 V
Self-diagnostic features	yes

<sup>1</sup> Ferromagnetic materials close to the sensor (i.e. shaft, mounting surface) may affect the sensor's linearity.

<sup>2</sup> For information on multi-turn sensors please contact Piher

<sup>3</sup> Voltages up to 25 V possible on request.

### ENVIRONMENTAL SPECIFICATIONS

Operating and storage temperature <sup>1</sup>	-40°C to +125°C
Shock	50g
Vibration	5-2000 Hz; 20g; Amax 0,75 mm
Sealing <sup>2</sup>	IP67, IP69K
Approval	CE <sup>3</sup>

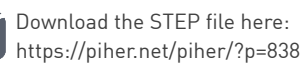
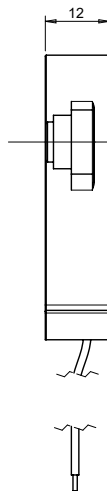
<sup>1</sup> Other specifications available

<sup>2</sup> IP rating on electronics

<sup>3</sup> EMC-testing according to standards EN 61000-6-2 and EN 6100-6-3. CE-approval applies to analogic-simple and analogic-redundant models.

## Hall-Effect Through-Shaft Rotary Position Sensor

## Outer Dimensions



Technical drawing of a mechanical part, likely a valve or actuator, showing a top view and a side view.

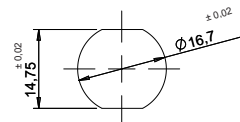
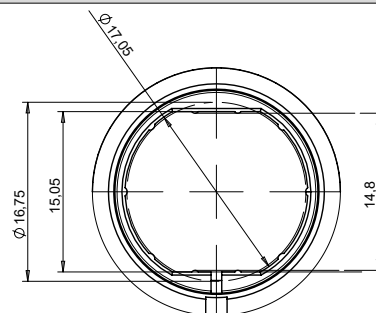
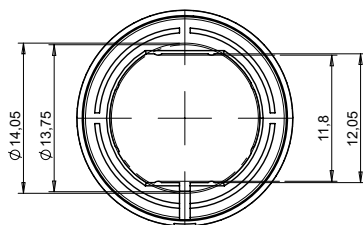
**Top View:**

- Central circular opening with a radius of  $R16.25$ .
- Two circular ports on the sides, each labeled "Metal Insert" and  $\varnothing 5.6$ .

**Side View:**

- Rectangular base with a width of 38.
- Central vertical shaft or rod passing through the base.

17mm rotor



Color	Simple output	Redundant output	Full-redundant output
Brown	Power supply	Power supply	Power supply 1
Blue	Ground	Ground	Ground 1
Black	Signal output	Signal output 1	Ground 2
White	n/a	Signal output 2	Signal output 2
Red	n/a	n/a	Power supply 2
Yellow	n/a	n/a	Signal output 1

Page 3 of 5

# PST-360

## Hall-Effect Through-Shaft Rotary Position Sensor

### HOW TO ORDER (Example: PST360G2-1A-C0001-ERA190-05K)

#### Simple Output - Analog and PWM

PST360G2	-	_	1	-	C _ _ _ _	-	ERA _ _ _	-	_ _	K	-	_ _ _ _
Series	Rotor <sup>1</sup>	Type	Output <sup>2</sup>	Output function <sup>3</sup>	Electric rotational angle <sup>4</sup>	Voltage supply <sup>5</sup>	Temp. range	PWM Frequency Hz <sup>6</sup>				
	[empty] = 14mm B = 17mm	1 = simple	A = analogic P = PWM	C0000 C0001	ERA040 ERA041 ... ERA360	05 = 5V ±10% RE = 7V-15V	K = -40°C to +125°C	[empty] = 200Hz F100 = 100Hz F101 = 101Hz ... F999 = 999Hz				

#### Simple output - SPI

PST360G2	-	_	1	S	-	C _ _ _ _	-	ERA _ _ _ _	-	_ _	K
Series	Rotor <sup>1</sup>	Type	Output <sup>2</sup>	Output function <sup>3</sup>	Electric rotational angle <sup>4</sup>	Voltage supply <sup>5</sup>	Temp. range				
	[empty] = 14mm B = 17mm	1 = simple	S = SPI	C0000 C0001	ERA040 ERA041 ... ERA360	05 = 5V ±10% RE = 7V-15V	K = -40°C to +125°C				

#### Redundant output - Analog and PWM

PST360G2	-	_	2	__	-	C_____	-	ERA____	-	__	K	-	_____	_____
Series	Rotor <sup>1</sup>	Type	Output <sup>2</sup>	Output function <sup>3</sup>	Electric rotational angle <sup>4</sup>	Voltage supply <sup>5</sup>	Temp. range	PWM Frequency Hz. [1] <sup>6</sup>	PWM Frequency Hz. [2] <sup>6</sup>					
	[empty] = 14mm B = 17mm	2 = redundant	AA= analogic PP = PWM	C0002 C0003	ERA040 ERA041 ... ERA360	05 = 5V ±10% RE = 7V-15V	K = -40°C to +125°C	F100 F101 ... F999	F100 F101 ... F999					

#### Full-redundant output - Analog and PWM

PST360G2	-	_	3	__	-	C_____	-	ERA____	-	05	K	-	_____	_____
Series	Rotor <sup>1</sup>	Type	Output <sup>2</sup>	Output function <sup>3</sup>	Electric rotational angle <sup>4</sup>	Voltage supply	Temp. range	PWM Frequency Hz. [1] <sup>5</sup>	PWM Frequency Hz. [2] <sup>5</sup>					
	[empty] = 14mm B = 17mm	3 = full-redundant	AA= analogic PP = PWM	C0002 C0003	ERA040 ERA041 ... ERA360	05 = 5V ±10%	K = -40°C to +125°C	F100 F101 ... F999	F100 F101 ... F999					

1 Other rotors available on request.

2 The analog output is ratiometric, proportional: - for supply voltage "5V" to input voltage; -for supply voltage "RE" to 5V.

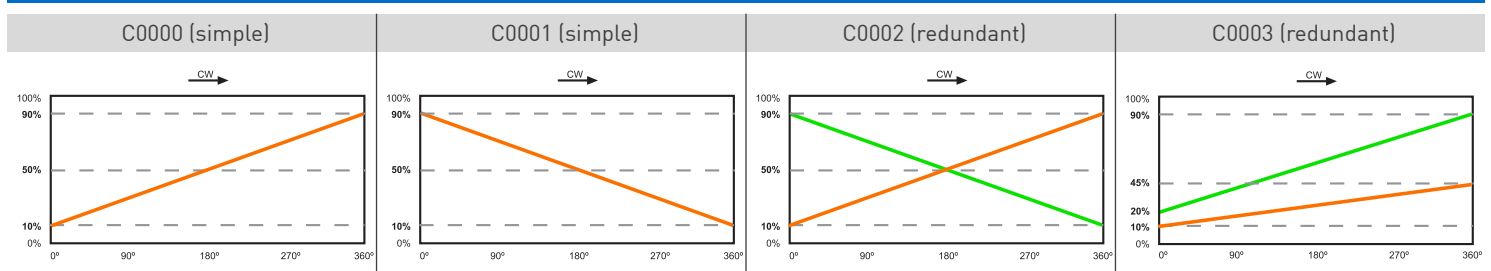
3 Other output functions available, please check availability. Enter CXXXX as long as the new output function is not defined.

4 Models with ERA < 40° available on request

5 Voltages up to 25V possible on request.

6 Leave empty if not applicable. Default frequency is 200 Hz

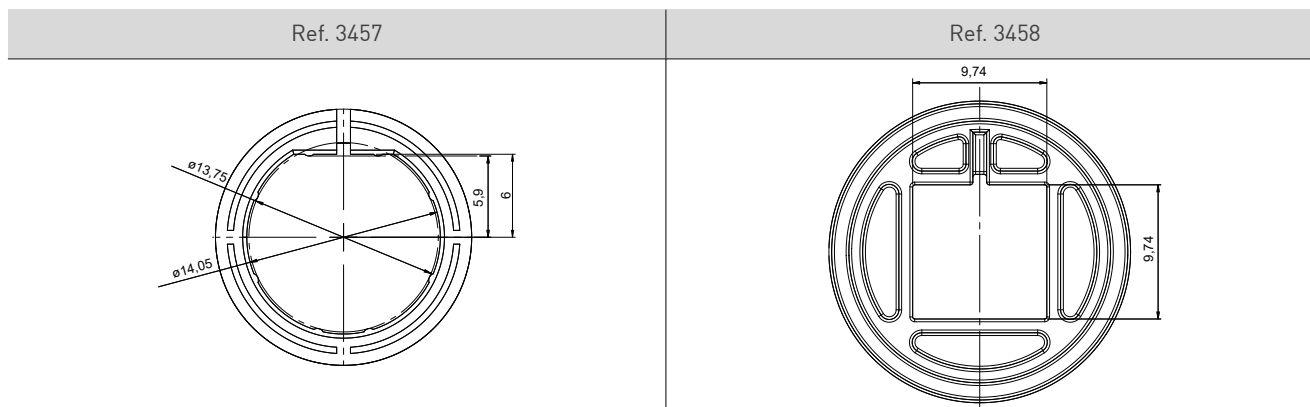
#### EXAMPLE OUTPUT FUNCTIONS



# PST-360

## Hall-Effect Through-Shaft Rotary Position Sensor

### SPECIAL ROTORS



For more information visit: [www.piher.net](http://www.piher.net)

### MOUNTING INSTRUCTIONS

1. Place the component on a flat surface.
2. Fit the shaft of the application (see recommended shaft dimensions) through the sensor's rotor avoiding any mechanical play/wobble.
3. Fasten the two M5 screws (M5 washers are recommended).

### OUR ADVANTAGE

- ▶ Leading-edge innovative position sensing solutions
  - ▷ Contactless (Hall-effect and Inductive Technology)
  - ▷ Contacting (Potentiometers, Printed Electronics)
- ▶ Engineering design-in support
- ▶ All our products can be customized to fit target application and customer requirement
- ▶ Capability to move seamlessly from development to true high-volume production
- ▶ A global footprint with global engineering and commercial support
- ▶ One-stop shop not limited to position sensors (temperature, pressure, gas,...) through group collaboration
- ▶ Flexibility and entrepreneurship of a medium-sized company with the backing of Amphenol Corporation



Please always use the latest updated datasheets and 3D models published on our website.

#### Disclaimer:

The product information in this catalog is for reference purposes. Please consult for the most up to date and accurate design information.  
 Piher Sensors & Controls S.A., its affiliates, agents, and employees, and all persons acting on its or their behalf (collectively, "Piher"), disclaim any and all liability for any errors, inaccuracies or incompleteness contained herein or in any other disclosure relating to any product described herein.  
 Piher disclaims any and all liability arising out of the use or application of any product described herein or of any information provided herein to the maximum extent permitted by law. The product specifications do not expand or otherwise modify Piher's terms and conditions of sale, including but not limited to the warranty expressed therein, which apply to these products.  
 No license, express or implied, by estoppel or otherwise, to any intellectual property rights is granted by this document or by any conduct of Piher.  
 The products shown herein are not designed for use in medical, life-saving, or life-sustaining applications unless otherwise expressly indicated. Customers using or selling Piher products not expressly indicated for use in such applications do so entirely at their own risk and agree to fully indemnify Piher for any damages arising or resulting from such use or sale. Please contact authorized Piher personnel to obtain written terms and conditions regarding products designed for such applications.  
 Product names and markings noted herein may be trademarks of their respective owners. Information contained in and/or attached to this catalogue may be subject to export control regulations of the European Community, USA, or other countries. Each recipient of this document is responsible to ensure that usage and/or transfer of any information contained in this document complies with all relevant export control regulations. If you are in any doubt about the export control restrictions that apply to this information, please contact the sender immediately. For any Piher Exports, Note: All products / technologies are EAR99 Classified commodities. Exports from the United States are in accordance with the Export Administration Regulations. Diversion contrary to US law is prohibited.

### CONTACT

**Piher Sensing Systems**  
 Polígono Industrial Municipal  
 Vial T2, Nº22  
 31500 Tudela  
 Spain

[sales@piher.net](mailto:sales@piher.net)

**Europe:** +34 948 820 450  
**Americas:** +1 636 251 0855  
**Asia Pacific:** +65 9641 8886  
**India:** +91 9538 686 586

Rev. 10032022 © 2022 Piher Sensors & Controls S.A.

# Mouser Electronics

Authorized Distributor

Click to View Pricing, Inventory, Delivery & Lifecycle Information:

## Amphenol:

[PST360G2-1A-C0011-ERA090-05K](#) [PST360G2-2AA-C0002-ERA360-05K](#) [PST360G2-1P-C0000-ERA360-05K](#)  
[PST360G2-1A-C0007-ERA180-05K](#) [PST360G2-1A-C0000-ERA360-05K](#) [PST360G2-1A-C0001-ERA360-05K](#)  
[PST360G2-B1A-C0000-ERA360-05K](#) [PST360G2-1S-C0000-ERA360-05K](#) [PST360G2-B1S-C0000-ERA180-05K](#)  
[PST360G2-B1P-C0000-ERA180-05K](#) [PST360G2-B1S-C0007-ERA180-05K](#)