



## MINI/CIRCULAR DINs: KMDGX Series Right Angle Mini-DIN

### Product Features

PC99 Colors Available  
 Shielded Options Available for Good Conductivity,  
 Grounding and EMI/RFI Protection  
 Mates with Standard and Snap and Lock Plugs  
 Visual and Mechanical Polarization for Plug Insertion  
 Reflow Compatible Design Available  
 Gold Plated Contacts  
 CSA/NRTL Certified File No. LR78160  
 UL File No. E140125

### Performance Specifications

#### Materials and Finish

##### Body

PBT Thermoplastic, Black, Purple, or Green Color

##### Contacts

Copper Alloy, Gold Plated

##### Shield

See Drawing

### Mechanical Characteristics

#### Insertion Force

3.0kg Max.

#### Extraction Force

0.3kg - 3.0kg

#### Durability

1000 Cycles Min.

### Electrical Characteristics

#### Rated Current

2A

#### Rated Voltage

12V DC

#### Insulation Resistance

500 Megohm Min. at 500V DC

#### Contact Resistance

**Before Durability Test**  
 Plug to Terminals: 30 milliohms Max.

#### After Durability Test

Plug to Terminals: 60 milliohms Max.

#### Dielectric Withstanding Voltage

500V RMS AC for 1 Minute

#### Operating Temperature

-25°C to + 80°C

2D Drawing	IGES	STEP	3D PDF
Solder Profile	CofC RoHS Compliant	CofC REACH Compliant	UL Plastic File
Certificate of Origin	Check Stock	Request a Sample	Send Us An Email

### Generated Part Number

### Part Number Builder

	-			
Series		Number of Contacts	Contact Type	Option

#### Series

**KMDGX** - Right Angle PCB Mount Mini-DIN

#### Number of Contacts

- 3 Contacts
- 4 Contacts
- 5 Contacts
- 6 Contacts
- 7 Contacts
- 8 Contacts
- 9 Contacts
- 10 Contacts (10 Available only with BS option)

#### Contact Type

**S** - Receptacle

#### Shielding Option

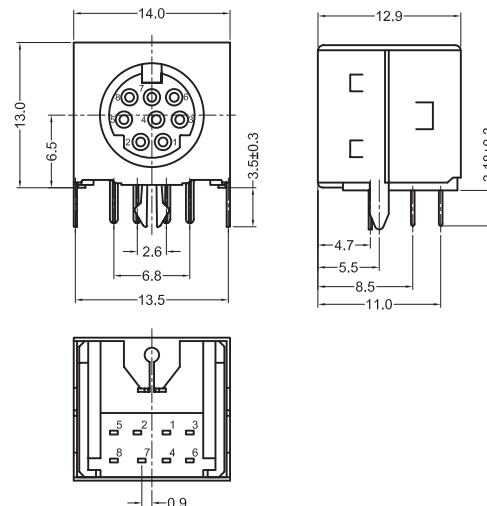
- N** - Non-Shielded
- AS** - Sides and Back Shielded
- BS** - Fully Shielded (Contact Kycon for 9 Contacts)

Contact Kycon for Other Options

### KMDGX Series

Dimensions in mm

KMDGX-8S-BS



# Mouser Electronics

Authorized Distributor

Click to View Pricing, Inventory, Delivery & Lifecycle Information:

## [Kycon:](#)

[KMDGX-10S-BS](#) [KMDGX-4S-BS](#) [KMDGX-8S-BS](#) [KMDGX-8S-AS](#) [KMDGX-4S-AS](#) [KMDGX-7S-N](#) [KMDGX-9S-AS](#)  
[KMDGX-9S-N](#) [KMDGX-3S-AS](#) [KMDGX-9S-BS](#) [KMDGX-6S-BS](#) [KMDGX-3S-BS](#) [KMDGX-7S-BS](#) [KMDGX-5S-BS](#)  
[KMDGX-3S-N](#) [KMDGX-6S-AS](#) [KMDGX-5S-AS](#) [KMDGX-6S-N](#) [KMDGX-8S-N](#) [KMDGX-5S-N](#) [KMDGX-4S-N](#) [KMDGX-7S-AS](#) [KMDGX-8S/8S-S4N1](#)