

Disconnect terminal block - PT 2,5-QUATTRO-TGB



3210194

<https://www.phoenixcontact.com/us/products/3210194>

Please be informed that the data shown in this PDF document is generated from our Online Catalog. Please find the complete data in the user documentation. Our General Terms of Use for Downloads are valid.



Disconnect terminal block, The max. load current must not be exceeded by the total current of all connected conductors.

Current and voltage are determined by the plug used., nom. voltage: 400 V, nominal current: 16 A, connection method: Push-in connection, Rated cross section: 2.5 mm², cross section: 0.14 mm² - 4 mm², mounting: NS 35/7,5, NS 35/15, color: gray

Your advantages

- In addition to the testing facility in the double function shaft, all terminal blocks provide an additional test connection
- The Push-in connection terminal blocks are characterized by the system features of the CLIPLINE complete system and by easy and tool-free wiring of conductors with ferrules or solid conductors
- The compact design and front connection enable wiring in a confined space
- Tested for railway applications

Commercial Data

Item number	3210194
Packing unit	1 pc
Minimum order quantity	50 pc
Sales Key	B04
Product Key	BE2232
Catalog Page	Page 76 (C-1-2019)
GTIN	4046356693974
Weight per Piece (including packing)	11.693 g
Weight per Piece (excluding packing)	10.764 g
Customs tariff number	85369010
Country of origin	PL

Disconnect terminal block - PT 2,5-QUATTRO-TGB



3210194

<https://www.phoenixcontact.com/us/products/3210194>

Technical Data

Notes

General	The max. load current must not be exceeded by the total current of all connected conductors. Current and voltage are determined by the plug used.
---------	--

General

Note	When establishing a connection on the open housing side of a feed-through modular terminal block of the same series and size, the block must be provided with a cover if the expected insulation voltage is >320 V. The max. load current must not be exceeded by the total current of all connected conductors. Current and voltage are determined by the component used.
------	--

Product properties

Product type	Disconnect terminal block
Area of application	Railway industry
	Machine building
	Plant engineering
Number of connections	4
Number of rows	1
Potentials	1

Insulation characteristics

Overvoltage category	III
Degree of pollution	3

Electrical properties

Rated surge voltage	6 kV
Maximum power dissipation for nominal condition	0.77 W

Connection data

Number of connections per level	4
Nominal cross section	2.5 mm ²
Stripping length	8 mm ... 10 mm
Internal cylindrical gage	A3
Connection in acc. with standard	IEC 60947-7-1
Conductor cross section solid	0.14 mm ² ... 4 mm ²
Cross section AWG	26 ... 12 (converted acc. to IEC)
Conductor cross section flexible	0.14 mm ² ... 4 mm ²
Conductor cross section, flexible [AWG]	26 ... 12 (converted acc. to IEC)
Flexible conductor cross section flexible (ferrule, w/o plastic sleeve)	0.14 mm ² ... 2.5 mm ²
Flexible conductor cross section (ferrule with plastic sleeve)	0.14 mm ² ... 2.5 mm ²

Disconnect terminal block - PT 2,5-QUATTRO-TGB



3210194

<https://www.phoenixcontact.com/us/products/3210194>

2 conductors with the same cross section, flexible, with TWIN ferrule with plastic sleeve	0.5 mm ²
Nominal current	16 A
Maximum load current	16 A (with 4 mm ² conductor cross section, rigid)
Nominal voltage	400 V
Nominal cross section	2.5 mm ²

Connection cross sections directly pluggable

Conductor cross section solid	0.34 mm ² ... 4 mm ²
Flexible conductor cross section flexible (ferrule, w/o plastic sleeve)	0.5 mm ² ... 2.5 mm ²
Flexible conductor cross section (ferrule with plastic sleeve)	0.34 mm ² ... 2.5 mm ²

Dimensions

Width	5.2 mm
End cover width	2.2 mm
Height	35.2 mm
Height NS 35/15	44.2 mm
Height NS 35/7,5	36.7 mm
Length	92.2 mm

Material specifications

Color	gray
Flammability rating according to UL 94	V0
Insulating material group	I
Insulating material	PA
Static insulating material application in cold	-60 °C
Temperature index of insulation material (DIN EN 60216-1 (VDE 0304-21))	130 °C
Relative insulation material temperature index (Elec., UL 746 B)	130 °C
Fire protection for rail vehicles (DIN EN 45545-2) R22	HL 1 - HL 3
Fire protection for rail vehicles (DIN EN 45545-2) R23	HL 1 - HL 3
Fire protection for rail vehicles (DIN EN 45545-2) R24	HL 1 - HL 3
Fire protection for rail vehicles (DIN EN 45545-2) R26	HL 1 - HL 3
Calorimetric heat release NFPA 130 (ASTM E 1354)	28 MJ/kg
Surface flammability NFPA 130 (ASTM E 162)	passed
Specific optical density of smoke NFPA 130 (ASTM E 662)	passed
Smoke gas toxicity NFPA 130 (SMP 800C)	passed

Electrical tests

Surge voltage test

Test voltage setpoint	7.3 kV
Result	Test passed

Temperature-rise test

Requirement temperature-rise test	Increase in temperature ≤ 45 K
-----------------------------------	--------------------------------

Disconnect terminal block - PT 2,5-QUATTRO-TGB



3210194

<https://www.phoenixcontact.com/us/products/3210194>

Result	Test passed
Short-time withstand current 2.5 mm ²	0.3 kA
Result	Test passed

Power-frequency withstand voltage

Test voltage setpoint	1.89 kV
Result	Test passed

Mechanical properties

Mechanical data

Open side panel	Yes
-----------------	-----

Mechanical tests

Mechanical strength

Result	Test passed
--------	-------------

Attachment on the carrier

DIN rail/fixing support	NS 35
Test force setpoint	1 N
Result	Test passed

Test for conductor damage and slackening

Rotation speed	9 rpm
Revolutions	135
Conductor cross section/weight	0.14 mm ² / 0.2 kg
	2.5 mm ² / 0.7 kg
	4 mm ² / 0.9 kg
Result	Test passed

Environmental and real-life conditions

Aging

Temperature cycles	192
Result	Test passed

Needle-flame test

Time of exposure	30 s
Result	Test passed

Oscillation/broadband noise

Specification	DIN EN 50155 (VDE 0115-200):2018-05
Spectrum	Service life test category 2, bogie-mounted
Frequency	f ₁ = 5 Hz to f ₂ = 250 Hz
ASD level	6.12 (m/s ²) ² /Hz
Acceleration	3.12g
Test duration per axis	5 h

Disconnect terminal block - PT 2,5-QUATTRO-TGB



3210194

<https://www.phoenixcontact.com/us/products/3210194>

Test directions	X-, Y- and Z-axis
Result	Test passed

Shocks

Specification	DIN EN 50155 (VDE 0115-200):2018-05
Pulse shape	Half-sine
Acceleration	30g
Shock duration	18 ms
Number of shocks per direction	3
Test directions	X-, Y- and Z-axis (pos. and neg.)
Result	Test passed

Ambient conditions

Ambient temperature (operation)	-60 °C ... 105 °C (max. short-term operating temperature RTI Elec.)
Ambient temperature (storage/transport)	-25 °C ... 60 °C (for a short time, not exceeding 24 h, -60 °C to +70 °C)
Ambient temperature (assembly)	-5 °C ... 70 °C
Ambient temperature (actuation)	-5 °C ... 70 °C
Permissible humidity (storage/transport)	30 % ... 70 %

Standards and regulations

Connection in acc. with standard	IEC 60947-7-1
----------------------------------	---------------

Mounting

Mounting type	NS 35/7,5
	NS 35/15

Disconnect terminal block - PT 2,5-QUATTRO-TGB

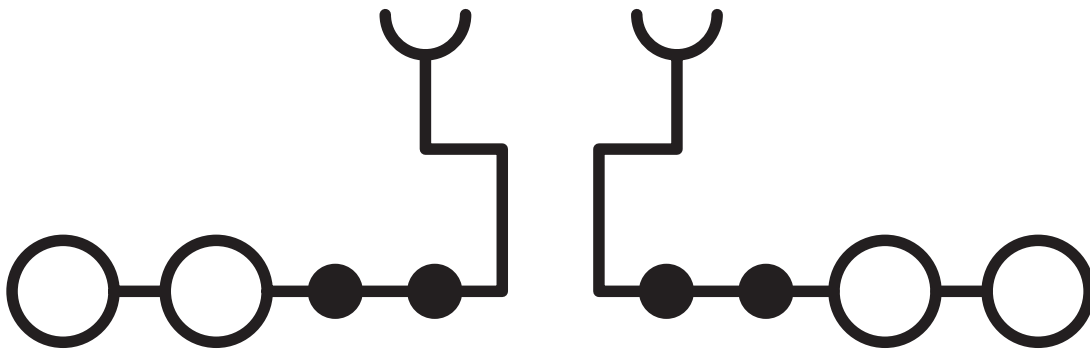


3210194

<https://www.phoenixcontact.com/us/products/3210194>

Drawings

Circuit diagram



Disconnect terminal block - PT 2,5-QUATTRO-TGB



3210194

<https://www.phoenixcontact.com/us/products/3210194>

Approvals

DNV Approval ID: TAE00003JE

CSA Approval ID: 13631				
	Nominal Voltage U_N	Nominal Current I_N	Cross Section AWG	Cross Section mm^2
Use group B				
Only flexible conductors	300 V	20 A	26 - 12	-
Only rigid conductors	300 V	16 A	26 - 12	-
Use group C				
Only flexible conductors	300 V	20 A	26 - 12	-
Only rigid conductors	300 V	16 A	26 - 12	-
Use group D				
	600 V	5 A	26 - 12	-

CB Approval ID: DE1-61292				
	Nominal Voltage U_N	Nominal Current I_N	Cross Section AWG	Cross Section mm^2
	400 V	16 A	-	- 2.5

EAC Approval ID: RU C-DE.AI30.B.01102

cULus Approval ID: E60425				
	Nominal Voltage U_N	Nominal Current I_N	Cross Section AWG	Cross Section mm^2
Use group B				
Only flexible conductors	300 V	20 A	26 - 12	-
Only rigid conductors	300 V	16 A	26 - 12	-
Use group C				
Only flexible conductors	300 V	20 A	26 - 12	-
Only rigid conductors	300 V	16 A	26 - 12	-
Use group D				
	600 V	5 A	26 - 12	-

Disconnect terminal block - PT 2,5-QUATTRO-TGB



3210194

<https://www.phoenixcontact.com/us/products/3210194>



LR

Approval ID: 14/20056



RS

Approval ID: 22.44.01.00083.250



BV

Approval ID: 25278/C1 BV

Nominal Voltage U_N

Nominal Current I_N

Cross Section AWG

Cross Section mm^2

-

-



EAC

Approval ID: RU C-DE.BL08.B.00644



VDE Zeichengenehmigung

Approval ID: 40037618

Nominal Voltage U_N

Nominal Current I_N

Cross Section AWG

Cross Section mm^2

400 V

16 A

-

0.2 - 2.5

ABS

Approval ID: 21-2192245-PDA

Disconnect terminal block - PT 2,5-QUATTRO-TGB



3210194

<https://www.phoenixcontact.com/us/products/3210194>

Classifications

ECLASS

ECLASS-9.0	27141126
ECLASS-10.0.1	27141126
ECLASS-11.0	27141126

ETIM

ETIM 8.0	EC000902
----------	----------

UNSPSC

UNSPSC 21.0	39121400
-------------	----------

Disconnect terminal block - PT 2,5-QUATTRO-TGB



3210194

<https://www.phoenixcontact.com/us/products/3210194>

Environmental Product Compliance


China RoHS	Environmentally friendly use period: unlimited = EFUP-e
	No hazardous substances above threshold values

Disconnect terminal block - PT 2,5-QUATTRO-TGB

3210194

<https://www.phoenixcontact.com/us/products/3210194>

Accessories

 Note: Applying some accessories below might limit this product.


Plug-in bridge

Plug-in bridge - FBS 2-5 - 3030161

<https://www.phoenixcontact.com/us/products/3030161>



Plug-in bridge, pitch: 5.2 mm, color: red

 Max. current carrying capacity: 16 A

Plug-in bridge

Plug-in bridge - FBS 3-5 - 3030174

<https://www.phoenixcontact.com/us/products/3030174>



Plug-in bridge, pitch: 5.2 mm, color: red

 Max. current carrying capacity: 16 A

Disconnect terminal block - PT 2,5-QUATTRO-TGB



3210194

<https://www.phoenixcontact.com/us/products/3210194>

Plug-in bridge

Plug-in bridge - FBS 4-5 - 3030187

<https://www.phoenixcontact.com/us/products/3030187>



Plug-in bridge, pitch: 5.2 mm, color: red

 Max. current carrying capacity: 16 A

Plug-in bridge

Plug-in bridge - FBS 5-5 - 3030190

<https://www.phoenixcontact.com/us/products/3030190>



Plug-in bridge, pitch: 5.2 mm, color: red

 Max. current carrying capacity: 16 A

Disconnect terminal block - PT 2,5-QUATTRO-TGB



3210194

<https://www.phoenixcontact.com/us/products/3210194>

Plug-in bridge

Plug-in bridge - FBS 10-5 - 3030213

<https://www.phoenixcontact.com/us/products/3030213>



Plug-in bridge, pitch: 5.2 mm, color: red

 Max. current carrying capacity: 16 A


Plug-in bridge

Plug-in bridge - FBS 20-5 - 3030226

<https://www.phoenixcontact.com/us/products/3030226>



Plug-in bridge, pitch: 5.2 mm, color: red

 Max. current carrying capacity: 16 A

Disconnect terminal block - PT 2,5-QUATTRO-TGB



3210194

<https://www.phoenixcontact.com/us/products/3210194>

Plug-in bridge

Plug-in bridge - FBS 50-5 - 3038930

<https://www.phoenixcontact.com/us/products/3038930>



Plug-in bridge, pitch: 5.2 mm, color: red

 Max. current carrying capacity: 16 A


Plug-in bridge

Plug-in bridge - FBSR 2-5 - 3033702

<https://www.phoenixcontact.com/us/products/3033702>



Plug-in bridge, pitch: 5.2 mm, color: red

 Max. current carrying capacity: 16 A

Disconnect terminal block - PT 2,5-QUATTRO-TGB



3210194

<https://www.phoenixcontact.com/us/products/3210194>

Plug-in bridge

Plug-in bridge - FBSR 3-5 - 3001591

<https://www.phoenixcontact.com/us/products/3001591>



Plug-in bridge, pitch: 5.2 mm, color: red

 Max. current carrying capacity: 16 A


Plug-in bridge

Plug-in bridge - FBSR 4-5 - 3001592

<https://www.phoenixcontact.com/us/products/3001592>



Plug-in bridge, pitch: 5.2 mm, color: red

 Max. current carrying capacity: 16 A

Disconnect terminal block - PT 2,5-QUATTRO-TGB



3210194

<https://www.phoenixcontact.com/us/products/3210194>

Plug-in bridge

Plug-in bridge - FBSR 5-5 - 3001593

<https://www.phoenixcontact.com/us/products/3001593>



Plug-in bridge, pitch: 5.2 mm, color: red

 Max. current carrying capacity: 16 A


Plug-in bridge

Plug-in bridge - FBSR 10-5 - 3033710

<https://www.phoenixcontact.com/us/products/3033710>



Plug-in bridge, pitch: 5.2 mm, color: red

 Max. current carrying capacity: 16 A

Disconnect terminal block - PT 2,5-QUATTRO-TGB



3210194

<https://www.phoenixcontact.com/us/products/3210194>

Plug-in bridge

Plug-in bridge - FBS 2-5 BU - 3036877

<https://www.phoenixcontact.com/us/products/3036877>



Plug-in bridge, pitch: 5.2 mm, color: blue

 Max. current carrying capacity: 16 A


Plug-in bridge

Plug-in bridge - FBS 3-5 BU - 3036880

<https://www.phoenixcontact.com/us/products/3036880>



Plug-in bridge, pitch: 5.2 mm, color: blue

 Max. current carrying capacity: 16 A

Disconnect terminal block - PT 2,5-QUATTRO-TGB



3210194

<https://www.phoenixcontact.com/us/products/3210194>

Plug-in bridge

Plug-in bridge - FBS 4-5 BU - 3036893

<https://www.phoenixcontact.com/us/products/3036893>



Plug-in bridge, pitch: 5.2 mm, color: blue

 Max. current carrying capacity: 16 A


Plug-in bridge

Plug-in bridge - FBS 5-5 BU - 3036903

<https://www.phoenixcontact.com/us/products/3036903>



Plug-in bridge, pitch: 5.2 mm, color: blue

 Max. current carrying capacity: 16 A

Disconnect terminal block - PT 2,5-QUATTRO-TGB



3210194

<https://www.phoenixcontact.com/us/products/3210194>

Plug-in bridge

Plug-in bridge - FBS 10-5 BU - 3036916

<https://www.phoenixcontact.com/us/products/3036916>



Plug-in bridge, pitch: 5.2 mm, color: blue

 Max. current carrying capacity: 16 A


Plug-in bridge

Plug-in bridge - FBS 20-5 BU - 3036929

<https://www.phoenixcontact.com/us/products/3036929>



Plug-in bridge, pitch: 5.2 mm, color: blue

 Max. current carrying capacity: 16 A

Disconnect terminal block - PT 2,5-QUATTRO-TGB



3210194

<https://www.phoenixcontact.com/us/products/3210194>

Plug-in bridge

Plug-in bridge - FBS 50-5 BU - 3032114

<https://www.phoenixcontact.com/us/products/3032114>



Plug-in bridge, Version with single- or double-sided cutting edge. Please keep in mind the possible impact on touch protection as well as air clearances and creepage distances., pitch: 5.2 mm, color: blue

 Max. current carrying capacity: 16 A


Reducing bridge

Reducing bridge - RB ST (2,5/4)-1,5/S - 3214356

<https://www.phoenixcontact.com/us/products/3214356>



Reducing bridge, pitch: 6.7 mm, color: red

 Max. current carrying capacity: 24 A

Disconnect terminal block - PT 2,5-QUATTRO-TGB



3210194

<https://www.phoenixcontact.com/us/products/3210194>

Reducing bridge

Reducing bridge - RB ST 6-(2,5/4) - 3030860

<https://www.phoenixcontact.com/us/products/3030860>



Reducing bridge, pitch: 9 mm, color: red

 Max. current carrying capacity: 35 A


Reducing bridge

Reducing bridge - RB ST 10-(2,5/4) - 3030873

<https://www.phoenixcontact.com/us/products/3030873>



Reducing bridge, pitch: 10 mm, color: red

 Max. current carrying capacity: 35 A

Disconnect terminal block - PT 2,5-QUATTRO-TGB



3210194

<https://www.phoenixcontact.com/us/products/3210194>

Reducing bridge

Reducing bridge - RB ST 16-(2,5/4) - 3030886

<https://www.phoenixcontact.com/us/products/3030886>



Reducing bridge, pitch: 11 mm, color: red

 Max. current carrying capacity: 35 A

Reducing bridge

Reducing bridge - RB ST 35-(2,5/4) - 3030899

<https://www.phoenixcontact.com/us/products/3030899>



Reducing bridge, pitch: 11 mm, color: red

 Max. current carrying capacity: 35 A

Disconnect terminal block - PT 2,5-QUATTRO-TGB



3210194

<https://www.phoenixcontact.com/us/products/3210194>

Reducing bridge

Reducing bridge - RB ST (2,5/4)-1,5 - 3038943

<https://www.phoenixcontact.com/us/products/3038943>



Reducing bridge, pitch: 7.1 mm, color: red

 Max. current carrying capacity: 24 A

Reducing bridge

Reducing bridge - RB UT 6-ST(2,5/4) - 3047264

<https://www.phoenixcontact.com/us/products/3047264>



Reducing bridge, pitch: 9.5 mm, color: red

 Max. current carrying capacity: 35 A

Disconnect terminal block - PT 2,5-QUATTRO-TGB



3210194

<https://www.phoenixcontact.com/us/products/3210194>

Reducing bridge

Reducing bridge - RB UT 35-ST(2,5/4) - 3047280

<https://www.phoenixcontact.com/us/products/3047280>



Reducing bridge, pitch: 10.8 mm, color: red

 Max. current carrying capacity: 40 A


Reducing bridge

Reducing bridge - RB UT 10-ST(2,5/4) - 3047086

<https://www.phoenixcontact.com/us/products/3047086>



Reducing bridge, pitch: 10.2 mm, color: red

 Max. current carrying capacity: 40 A

Disconnect terminal block - PT 2,5-QUATTRO-TGB



3210194

<https://www.phoenixcontact.com/us/products/3210194>

Reducing bridge

Reducing bridge - RB UT 16-ST(2,5/4) - 3047099

<https://www.phoenixcontact.com/us/products/3047099>



Reducing bridge, pitch: 11 mm, color: red

 Max. current carrying capacity: 40 A

Partition plate

Partition plate - ATP-ST QUATTRO - 3030815

<https://www.phoenixcontact.com/us/products/3030815>

Partition plate, length: 90.9 mm, width: 2 mm, height: 45 mm, color: gray



Disconnect terminal block - PT 2,5-QUATTRO-TGB



3210194

<https://www.phoenixcontact.com/us/products/3210194>

End cover

End cover - D-PT 2,5-QUATTRO-MTB - 3210209

<https://www.phoenixcontact.com/us/products/3210209>

End cover, length: 92.2 mm, width: 2.2 mm, height: 29.05 mm, color: gray



Cover segment

Cover segment - DS-ST 2,5 - 3036602

<https://www.phoenixcontact.com/us/products/3036602>

End cover segments, large segment: 32.25 x 13.83 x 0.9, small segment: 22.65 x 11.65 x 0.9, color: gray



Disconnect terminal block - PT 2,5-QUATTRO-TGB



3210194

<https://www.phoenixcontact.com/us/products/3210194>

Screwdriver

Screwdriver - SZF 1-0,6X3,5 - 1204517

<https://www.phoenixcontact.com/us/products/1204517>



Actuation tool, for ST terminal blocks, also suitable for use as a bladed screwdriver, size: 0.6 x 3.5 x 100 mm, 2-component grip, with non-slip grip

Marker carriers

Marker carriers - STP 5-2-ZB - 3037643

<https://www.phoenixcontact.com/us/products/3037643>



Marker carriers, snaps into ST 2,5 spring-cage terminal blocks, can be marked with UC-TM 5, UC-TMF 5, UCT-TM 5, UCT-TMF 5, ZB 5, or ZBF 5, gray, unlabeled, mounting type: plug in

Disconnect terminal block - PT 2,5-QUATTRO-TGB



3210194

<https://www.phoenixcontact.com/us/products/3210194>

Group marker label for terminal marking

Group marker label for terminal marking - GBS 5-25X12 - 0810588

<https://www.phoenixcontact.com/us/products/0810588>



Group marker label, snaps onto terminal center for screw, spring-cage and quick connection terminal blocks, labeled with a 25 x 12 mm label or manually with the B-STIFT, in the foot part with ZB 5

Group marker label for terminal marking

Group marker label for terminal marking - GBS-ZB/26X6 - 0809298

<https://www.phoenixcontact.com/us/products/0809298>



Group marking label, snaps onto terminal center for screw, spring-cage and quick connection terminal blocks, labeled with ESL 26x6 mm or EST 25x6 mm, in the foot part with Zack marker strip, length: 29 mm

Disconnect terminal block - PT 2,5-QUATTRO-TGB



3210194

<https://www.phoenixcontact.com/us/products/3210194>

Mounting material

Mounting material - PT-IL - 3208090

<https://www.phoenixcontact.com/us/products/3208090>

Operating decal for the push-in Technology



Actuation tool

Actuation tool - ST-BW - 1207608

<https://www.phoenixcontact.com/us/products/1207608>

Actuation tool, for all 2.5 mm² - 4.0 mm² spring-cages



Disconnect terminal block - PT 2,5-QUATTRO-TGB



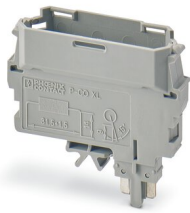
3210194

<https://www.phoenixcontact.com/us/products/3210194>

Component connector

Component connector - P-CO XL - 3036797

<https://www.phoenixcontact.com/us/products/3036797>



Component connector, for installing components that can be individually selected up to a diameter of 10 mm and power dissipation of up to 1 W, nominal current: 10 A, length: 41.2 mm, width: 12.3 mm, height: 37.5 mm, number of positions: 1, color: gray

Component connector

Component connector - P-CO XL SKN - 3036798

<https://www.phoenixcontact.com/us/products/3036798>



Component connector, specifically for holding the SKN 2,5 diode, nominal current: 10 A, length: 41.2 mm, width: 12.3 mm, height: 37.5 mm, number of positions: 1, color: gray

Disconnect terminal block - PT 2,5-QUATTRO-TGB



3210194

<https://www.phoenixcontact.com/us/products/3210194>

Filler plugs

Filler plugs - CEC 2,5 - 3062757

<https://www.phoenixcontact.com/us/products/3062757>



Cover for conductor shaft, 10-pos., for spring cage terminal blocks (ST) and terminal blocks with push-in technology (PT) with a width of 5.2 mm

Component connector

Component connector - P-CO 2-5 R47K - 3032447

<https://www.phoenixcontact.com/us/products/3032447>



Component connector, with 47 kOhm resistance for wire-break monitoring, pitch: 5.2 mm, length: 8.9 mm, width: 4.1 mm, height: 34.8 mm, number of positions: 2, color: black

Disconnect terminal block - PT 2,5-QUATTRO-TGB

3210194

<https://www.phoenixcontact.com/us/products/3210194>

Warning label

Warning label - WS PT 2,5 - 1029026

<https://www.phoenixcontact.com/us/products/1029026>



Warning label, yellow/black, labeled: Lightning flash, mounting type: plug in, for terminal block width: 5.2 mm

Warning label

Warning label - WS-DIO PT 2,5 - 1029037

<https://www.phoenixcontact.com/us/products/1029037>



Warning label, yellow/black, labeled: Diode, mounting type: plug in, for terminal block width: 5.2 mm

Disconnect terminal block - PT 2,5-QUATTRO-TGB

3210194

<https://www.phoenixcontact.com/us/products/3210194>

Isolating plugs

Isolating plugs - P-DI - 3036783

<https://www.phoenixcontact.com/us/products/3036783>



Isolating plugs, length: 10.8 mm, width: 3.5 mm, height: 23.1 mm, color: orange

Isolating plugs

Isolating plugs - P-DI GY - 3047390

<https://www.phoenixcontact.com/us/products/3047390>



Isolating plugs, length: 10.8 mm, width: 3.5 mm, height: 23.1 mm, color: gray

Disconnect terminal block - PT 2,5-QUATTRO-TGB



3210194

<https://www.phoenixcontact.com/us/products/3210194>

Isolating plugs

Isolating plugs - P-DI GN - 1071062

<https://www.phoenixcontact.com/us/products/1071062>

Isolating plugs, length: 10.8 mm, width: 3.5 mm, height: 23.1 mm, color: green



DIN rail perforated

DIN rail perforated - NS 35/ 7,5 PERF 2000MM - 0801733

<https://www.phoenixcontact.com/us/products/0801733>

DIN rail perforated, acc. to EN 60715, material: Steel, galvanized, passivated with a thick layer, Standard profile, color: silver, Pack of 25 (50 m)



Disconnect terminal block - PT 2,5-QUATTRO-TGB



3210194

<https://www.phoenixcontact.com/us/products/3210194>

DIN rail, unperforated

DIN rail, unperforated - NS 35/ 7,5 UNPERF 2000MM - 0801681

<https://www.phoenixcontact.com/us/products/0801681>



DIN rail, unperforated, acc. to EN 60715, material: Steel, galvanized, passivated with a thick layer, Standard profile, color: silver, Pack of 25 (50 m)

DIN rail perforated

DIN rail perforated - NS 35/ 7,5 WH PERF 2000MM - 1204119

<https://www.phoenixcontact.com/us/products/1204119>



DIN rail perforated, acc. to EN 60715, material: Steel, Galvanized, white passivated, Standard profile, color: silver, Pack of 25 (50 m)

Disconnect terminal block - PT 2,5-QUATTRO-TGB



3210194

<https://www.phoenixcontact.com/us/products/3210194>

DIN rail, unperforated

DIN rail, unperforated - NS 35/ 7,5 WH UNPERF 2000MM-VPE 10 - 1204122

<https://www.phoenixcontact.com/us/products/1204122>



DIN rail, unperforated, acc. to EN 60715, material: Steel, Galvanized, white passivated, Standard profile, color: silver, Pack of 10 (20 m)

DIN rail, unperforated

DIN rail, unperforated - NS 35/ 7,5 AL UNPERF 2000MM - 0801704

<https://www.phoenixcontact.com/us/products/0801704>



DIN rail, unperforated, acc. to EN 60715, material: Aluminum, uncoated, Standard profile, color: silver, Pack of 25 (50 m)

Disconnect terminal block - PT 2,5-QUATTRO-TGB



3210194

<https://www.phoenixcontact.com/us/products/3210194>

DIN rail perforated

DIN rail perforated - NS 35/ 7,5 ZN PERF 2000MM - 1206421

<https://www.phoenixcontact.com/us/products/1206421>



DIN rail perforated, acc. to EN 60715, material: Steel, galvanized, Standard profile, color: silver, Pack of 25 (50 m)

DIN rail, unperforated

DIN rail, unperforated - NS 35/ 7,5 ZN UNPERF 2000MM - 1206434

<https://www.phoenixcontact.com/us/products/1206434>



DIN rail, unperforated, acc. to EN 60715, material: Steel, galvanized, Standard profile, color: silver, Pack of 25 (50 m)

Disconnect terminal block - PT 2,5-QUATTRO-TGB



3210194

<https://www.phoenixcontact.com/us/products/3210194>

DIN rail, unperforated

DIN rail, unperforated - NS 35/ 7,5 CU UNPERF 2000MM-VPE 10 - 0801762

<https://www.phoenixcontact.com/us/products/0801762>



DIN rail, unperforated, acc. to EN 60715, material: Copper, uncoated, Standard profile, color: copper-colored, Pack of 10 (20 m)

End cap

End cap - NS 35/ 7,5 CAP - 1206560

<https://www.phoenixcontact.com/us/products/1206560>

DIN rail end piece, for DIN rail NS 35/7.5



Disconnect terminal block - PT 2,5-QUATTRO-TGB



3210194

<https://www.phoenixcontact.com/us/products/3210194>

DIN rail perforated

DIN rail perforated - NS 35/15 PERF 2000MM - 1201730

<https://www.phoenixcontact.com/us/products/1201730>



DIN rail perforated, similar to EN 60715, material: Steel, galvanized, passivated with a thick layer, Standard profile, color: silver, Pack of 25 (50 m)

DIN rail, unperforated

DIN rail, unperforated - NS 35/15 UNPERF 2000MM - 1201714

<https://www.phoenixcontact.com/us/products/1201714>



DIN rail, unperforated, similar to EN 60715, material: Steel, galvanized, passivated with a thick layer, Standard profile, color: silver, Pack of 25 (50 m)

Disconnect terminal block - PT 2,5-QUATTRO-TGB



3210194

<https://www.phoenixcontact.com/us/products/3210194>

DIN rail perforated

DIN rail perforated - NS 35/15 WH PERF 2000MM - 0806602

<https://www.phoenixcontact.com/us/products/0806602>



DIN rail perforated, similar to EN 60715, material: Steel, Galvanized, white passivated, Standard profile, color: white, Pack of 25 (50 m)

DIN rail, unperforated

DIN rail, unperforated - NS 35/15 WH UNPERF 2000MM-VPE 10 - 1204135

<https://www.phoenixcontact.com/us/products/1204135>



DIN rail, unperforated, similar to EN 60715, material: Steel, Galvanized, white passivated, Standard profile, color: silver, Pack of 10 (20 m)

Disconnect terminal block - PT 2,5-QUATTRO-TGB



3210194

<https://www.phoenixcontact.com/us/products/3210194>

DIN rail, unperforated

DIN rail, unperforated - NS 35/15 AL UNPERF 2000MM - 1201756

<https://www.phoenixcontact.com/us/products/1201756>



DIN rail, unperforated, similar to EN 60715, material: Aluminum, uncoated, Standard profile, color: silver

DIN rail perforated

DIN rail perforated - NS 35/15 ZN PERF 2000MM - 1206599

<https://www.phoenixcontact.com/us/products/1206599>



DIN rail perforated, similar to EN 60715, material: Steel, galvanized, Standard profile, color: silver, Pack of 25 (50 m)

Disconnect terminal block - PT 2,5-QUATTRO-TGB



3210194

<https://www.phoenixcontact.com/us/products/3210194>

DIN rail, unperforated

DIN rail, unperforated - NS 35/15 ZN UNPERF 2000MM - 1206586

<https://www.phoenixcontact.com/us/products/1206586>



DIN rail, unperforated, similar to EN 60715, material: Steel, galvanized, Standard profile, color: silver, Pack of 25 (50 m)

DIN rail, unperforated

DIN rail, unperforated - NS 35/15 CU UNPERF 2000MM-VPE 10 - 1201895

<https://www.phoenixcontact.com/us/products/1201895>



DIN rail, unperforated, similar to EN 60715, material: Copper, uncoated, Standard profile, color: copper-colored, Pack of 10 (20 m)

Disconnect terminal block - PT 2,5-QUATTRO-TGB



3210194

<https://www.phoenixcontact.com/us/products/3210194>

End cap

End cap - NS 35/15 CAP - 1206573

<https://www.phoenixcontact.com/us/products/1206573>

DIN rail end piece, for DIN rail NS 35/15



DIN rail, unperforated

DIN rail, unperforated - NS 35/15-2,3 UNPERF 2000MM-VPE 10 - 1201798

<https://www.phoenixcontact.com/us/products/1201798>



DIN rail, unperforated, acc. to EN 60715, material: Steel, galvanized, passivated with a thick layer, Standard profile 2.3 mm, color: silver, Pack of 10 (20 m)

Disconnect terminal block - PT 2,5-QUATTRO-TGB



3210194

<https://www.phoenixcontact.com/us/products/3210194>

Zack marker strip

Zack marker strip - ZB 5 :UNBEDRUCKT - 1050004

<https://www.phoenixcontact.com/us/products/1050004>



Zack marker strip, Strip, white, unlabeled, can be labeled with: PLOTMARK, CMS-P1-PLOTTER, mounting type: snapped, for terminal block width: 5.2 mm, lettering field size: 5.1 x 10.5 mm, Number of individual labels: 10

Zack marker strip

Zack marker strip - ZB 5 CUS - 0824962

<https://www.phoenixcontact.com/us/products/0824962>



Zack marker strip, can be ordered: Strip, white, labeled according to customer specifications, mounting type: snap into tall marker groove, for terminal block width: 5.2 mm, lettering field size: 5.15 x 10.5 mm, Number of individual labels: 10

Disconnect terminal block - PT 2,5-QUATTRO-TGB



3210194

<https://www.phoenixcontact.com/us/products/3210194>

Zack marker strip

Zack marker strip - ZB 5,LGS:FORTL.ZAHLEN - 1050017

<https://www.phoenixcontact.com/us/products/1050017>

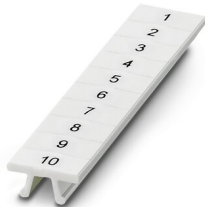


Zack marker strip, Strip, white, labeled, printed horizontally: consecutive numbers 1 ... 10, 11 ... 20, etc. up to 491 ... 500, mounting type: snapped, for terminal block width: 5.2 mm, lettering field size: 5.15 x 10.5 mm, Number of individual labels: 10

Zack marker strip

Zack marker strip - ZB 5,QR:FORTL.ZAHLEN - 1050020

<https://www.phoenixcontact.com/us/products/1050020>



Zack marker strip, white, Printed vertically: consecutive numbers 1 ... 10, 11 ... 20, etc. up to 491 ... 500, mounting type: snapped, for terminal block width: 5.2 mm, lettering field size: 5.15 x 10.5 mm

Disconnect terminal block - PT 2,5-QUATTRO-TGB



3210194

<https://www.phoenixcontact.com/us/products/3210194>

Zack marker strip

Zack marker strip - ZB 5,LGS:GLEICHE ZAHLEN - 1050033

<https://www.phoenixcontact.com/us/products/1050033>



Zack marker strip, Strip, white, labeled, can be labeled with: CMS-P1-PLOTTER, printed horizontally: Identical numbers 1 or 2, etc. up to 100, mounting type: snapped, for terminal block width: 5.2 mm, lettering field size: 5.15 x 10.5 mm, Number of individual labels: 10

Zack marker strip

Zack marker strip - ZB 5,LGS:L1-N,PE - 1050415

<https://www.phoenixcontact.com/us/products/1050415>



Zack marker strip, Strip, white, labeled, horizontal: L1, L2, L3, N, PE, L1, L2, L3, N, PE, mounting type: snapped, for terminal block width: 5.2 mm, lettering field size: 5.15 x 10.5 mm, Number of individual labels: 10

Disconnect terminal block - PT 2,5-QUATTRO-TGB



3210194

<https://www.phoenixcontact.com/us/products/3210194>

Marker for terminal blocks

Marker for terminal blocks - UC-TM 5 - 0818108

<https://www.phoenixcontact.com/us/products/0818108>



Marker for terminal blocks, Sheet, white, unlabeled, can be labeled with: BLUEMARK ID COLOR, BLUEMARK ID, BLUEMARK CLED, PLOTMARK, CMS-P1-PLOTTER, mounting type: snapped, for terminal block width: 5.2 mm, lettering field size: 10.5 x 4.6 mm, Number of individual labels: 96

Marker for terminal blocks

Marker for terminal blocks - UC-TM 5 CUS - 0824581

<https://www.phoenixcontact.com/us/products/0824581>



Marker for terminal blocks, can be ordered: by sheet, white, labeled according to customer specifications, mounting type: snap into tall marker groove, for terminal block width: 5.2 mm, lettering field size: 10.5 x 4.6 mm, Number of individual labels: 96

Disconnect terminal block - PT 2,5-QUATTRO-TGB



3210194

<https://www.phoenixcontact.com/us/products/3210194>

Marker for terminal blocks

Marker for terminal blocks - UCT-TM 5 - 0828734

<https://www.phoenixcontact.com/us/products/0828734>



Marker for terminal blocks, Sheet, white, unlabeled, can be labeled with: TOPMARK NEO, TOPMARK LASER, BLUEMARK ID COLOR, BLUEMARK ID, BLUEMARK CLED, THERMOMARK PRIME, THERMOMARK CARD 2.0, THERMOMARK CARD, mounting type: snapped, for terminal block width: 5.2 mm, lettering field size: 4.6 x 10.5 mm, Number of individual labels: 72

Marker for terminal blocks

Marker for terminal blocks - UCT-TM 5 CUS - 0829595

<https://www.phoenixcontact.com/us/products/0829595>



Marker for terminal blocks, can be ordered: by sheet, white, labeled according to customer specifications, mounting type: snap into tall marker groove, for terminal block width: 5.2 mm, lettering field size: 4.6 x 10.5 mm, Number of individual labels: 72

Disconnect terminal block - PT 2,5-QUATTRO-TGB



3210194

<https://www.phoenixcontact.com/us/products/3210194>

Zack Marker strip, flat

Zack Marker strip, flat - ZBF 5:UNBEDRUCKT - 0808642

<https://www.phoenixcontact.com/us/products/0808642>



Zack Marker strip, flat, Strip, white, unlabeled, can be labeled with: PLOTMARK, CMS-P1-PLOTTER, mounting type: snapped, for terminal block width: 5 mm, lettering field size: 5.1 x 5.2 mm, Number of individual labels: 10

Zack Marker strip, flat

Zack Marker strip, flat - ZBF 5 CUS - 0825025

<https://www.phoenixcontact.com/us/products/0825025>



Zack Marker strip, flat, can be ordered: Strip, white, labeled according to customer specifications, mounting type: snap into flat marker groove, for terminal block width: 5 mm, lettering field size: 5.15 x 5.15 mm, Number of individual labels: 10

Disconnect terminal block - PT 2,5-QUATTRO-TGB



3210194

<https://www.phoenixcontact.com/us/products/3210194>

Zack Marker strip, flat

Zack Marker strip, flat - ZBF 5,LGS:FORTL.ZAHLEN - 0808671

<https://www.phoenixcontact.com/us/products/0808671>



Zack Marker strip, flat, Strip, white, labeled, printed horizontally: consecutive numbers 1 ... 10, 11 ... 20, etc. up to 491 ... 500, mounting type: snapped, for terminal block width: 5 mm, lettering field size: 5.15 x 5.15 mm, Number of individual labels: 10

Zack Marker strip, flat

Zack Marker strip, flat - ZBF 5,QR:FORTL.ZAHLEN - 0808697

<https://www.phoenixcontact.com/us/products/0808697>



Zack Marker strip, flat, Strip, white, labeled, Printed vertically: consecutive numbers 1 ... 10, 11 ... 20, etc. up to 91 ... 100, mounting type: snapped, for terminal block width: 5 mm, lettering field size: 5.15 x 5.15 mm, Number of individual labels: 10

Disconnect terminal block - PT 2,5-QUATTRO-TGB



3210194

<https://www.phoenixcontact.com/us/products/3210194>

Zack Marker strip, flat

Zack Marker strip, flat - ZBF 5,LGS:GERADE ZAHLEN - 0810821

<https://www.phoenixcontact.com/us/products/0810821>



Zack Marker strip, flat, Strip, white, labeled, printed horizontally: consecutive even numbers 2 ... 20, 22 ... 40, etc. up to 82 ... 100, mounting type: snapped, for terminal block width: 5 mm, lettering field size: 5.15 x 5.15 mm, Number of individual labels: 10

Zack Marker strip, flat

Zack Marker strip, flat - ZBF 5,LGS:UNGERADE ZAHLEN - 0810863

<https://www.phoenixcontact.com/us/products/0810863>



Zack Marker strip, flat, Strip, white, labeled, printed horizontally: Odd numbers 1 - 19, 21 - 39, etc. up to 81 - 99, mounting type: snapped, for terminal block width: 5 mm, lettering field size: 5.15 x 5.15 mm, Number of individual labels: 10

Disconnect terminal block - PT 2,5-QUATTRO-TGB



3210194

<https://www.phoenixcontact.com/us/products/3210194>

Marker for terminal blocks

Marker for terminal blocks - UC-TMF 5 - 0818153

<https://www.phoenixcontact.com/us/products/0818153>



Marker for terminal blocks, Sheet, white, unlabeled, can be labeled with: BLUEMARK ID COLOR, BLUEMARK ID, BLUEMARK CLED, PLOTMARK, CMS-P1-PLOTTER, mounting type: snapped, for terminal block width: 5.2 mm, lettering field size: 4.6 x 5.1 mm, Number of individual labels: 96

Marker for terminal blocks

Marker for terminal blocks - UC-TMF 5 CUS - 0824638

<https://www.phoenixcontact.com/us/products/0824638>



Marker for terminal blocks, can be ordered: by sheet, white, labeled according to customer specifications, mounting type: snap into flat marker groove, for terminal block width: 5.2 mm, lettering field size: 4.6 x 5.1 mm, Number of individual labels: 96

Disconnect terminal block - PT 2,5-QUATTRO-TGB



3210194

<https://www.phoenixcontact.com/us/products/3210194>

Marker for terminal blocks

Marker for terminal blocks - UCT-TMF 5 - 0828744

<https://www.phoenixcontact.com/us/products/0828744>



Marker for terminal blocks, Sheet, white, unlabeled, can be labeled with: TOPMARK NEO, TOPMARK LASER, BLUEMARK ID COLOR, BLUEMARK ID, BLUEMARK CLED, THERMOMARK PRIME, THERMOMARK CARD 2.0, THERMOMARK CARD, mounting type: snapped, for terminal block width: 5.2 mm, lettering field size: 4.4 x 4.7 mm, Number of individual labels: 72

Marker for terminal blocks

Marker for terminal blocks - UCT-TMF 5 CUS - 0829658

<https://www.phoenixcontact.com/us/products/0829658>



Marker for terminal blocks, can be ordered: by sheet, white, labeled according to customer specifications, mounting type: snap into flat marker groove, for terminal block width: 5.2 mm, lettering field size: 4.4 x 4.7 mm, Number of individual labels: 72

Disconnect terminal block - PT 2,5-QUATTRO-TGB



3210194

<https://www.phoenixcontact.com/us/products/3210194>

Test plugs

Test plugs - MPS-MT - 0201744

<https://www.phoenixcontact.com/us/products/0201744>



Test plugs, with solder connection up to 1 mm² conductor cross section, color: gray

Insulating sleeve

Insulating sleeve - MPS-IH WH - 0201663

<https://www.phoenixcontact.com/us/products/0201663>

Insulating sleeve, color: white



Disconnect terminal block - PT 2,5-QUATTRO-TGB



3210194

<https://www.phoenixcontact.com/us/products/3210194>

Insulating sleeve

Insulating sleeve - MPS-IH RD - 0201676

<https://www.phoenixcontact.com/us/products/0201676>

Insulating sleeve, color: red

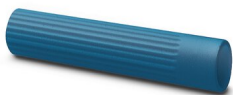


Insulating sleeve

Insulating sleeve - MPS-IH BU - 0201689

<https://www.phoenixcontact.com/us/products/0201689>

Insulating sleeve, color: blue



Disconnect terminal block - PT 2,5-QUATTRO-TGB



3210194

<https://www.phoenixcontact.com/us/products/3210194>

Insulating sleeve

Insulating sleeve - MPS-IH YE - 0201692

<https://www.phoenixcontact.com/us/products/0201692>

Insulating sleeve, color: yellow



Insulating sleeve

Insulating sleeve - MPS-IH GN - 0201702

<https://www.phoenixcontact.com/us/products/0201702>

Insulating sleeve, color: green



Disconnect terminal block - PT 2,5-QUATTRO-TGB



3210194

<https://www.phoenixcontact.com/us/products/3210194>

Insulating sleeve

Insulating sleeve - MPS-IH GY - 0201728

<https://www.phoenixcontact.com/us/products/0201728>

Insulating sleeve, color: gray



Insulating sleeve

Insulating sleeve - MPS-IH BK - 0201731

<https://www.phoenixcontact.com/us/products/0201731>

Insulating sleeve, color: black



Disconnect terminal block - PT 2,5-QUATTRO-TGB



3210194

<https://www.phoenixcontact.com/us/products/3210194>

Insulating sleeve

Insulating sleeve - ISH 2,5/0,2 - 3002843

<https://www.phoenixcontact.com/us/products/3002843>



Insulating sleeve, color: white

Insulating sleeve

Insulating sleeve - ISH 2,5/0,5 - 3002856

<https://www.phoenixcontact.com/us/products/3002856>



Insulating sleeve, color: gray

Disconnect terminal block - PT 2,5-QUATTRO-TGB



3210194

<https://www.phoenixcontact.com/us/products/3210194>

Insulating sleeve

Insulating sleeve - ISH 2,5/1,0 - 3002869

<https://www.phoenixcontact.com/us/products/3002869>



Insulating sleeve, color: black

Test adapter

Test adapter - PAI-4-FIX-5/6 BU - 3035975

<https://www.phoenixcontact.com/us/products/3035975>



4 mm test adapter, for terminal blocks with 5.2 mm and 6.2 mm pitch

Disconnect terminal block - PT 2,5-QUATTRO-TGB



3210194

<https://www.phoenixcontact.com/us/products/3210194>

Test adapter

Test adapter - PAI-4-FIX-5/6 OG - 3035974

<https://www.phoenixcontact.com/us/products/3035974>



4 mm test adapter, for terminal blocks with 5.2 mm and 6.2 mm pitch

Test adapter

Test adapter - PAI-4-FIX-5/6 YE - 3035977

<https://www.phoenixcontact.com/us/products/3035977>



4 mm test adapter, for terminal blocks with 5.2 mm and 6.2 mm pitch

Disconnect terminal block - PT 2,5-QUATTRO-TGB



3210194

<https://www.phoenixcontact.com/us/products/3210194>

Test adapter

Test adapter - PAI-4-FIX-5/6 RD - 3035976

<https://www.phoenixcontact.com/us/products/3035976>



4 mm test adapter, for terminal blocks with 5.2 mm and 6.2 mm pitch

Test adapter

Test adapter - PAI-4-FIX-5/6 GN - 3035978

<https://www.phoenixcontact.com/us/products/3035978>



4 mm test adapter, for terminal blocks with 5.2 mm and 6.2 mm pitch

Disconnect terminal block - PT 2,5-QUATTRO-TGB



3210194

<https://www.phoenixcontact.com/us/products/3210194>

Test adapter

Test adapter - PAI-4-FIX-5/6 BK - 3035980

<https://www.phoenixcontact.com/us/products/3035980>



4 mm test adapter, for terminal blocks with 5.2 mm and 6.2 mm pitch

Test adapter

Test adapter - PAI-4-FIX-5/6 GY - 3035982

<https://www.phoenixcontact.com/us/products/3035982>



4 mm test adapter, for terminal blocks with 5.2 mm and 6.2 mm pitch

Disconnect terminal block - PT 2,5-QUATTRO-TGB



3210194

<https://www.phoenixcontact.com/us/products/3210194>

Test adapter

Test adapter - PAI-4-FIX-5/6 VT - 3035979

<https://www.phoenixcontact.com/us/products/3035979>



4 mm test adapter, for terminal blocks with 5.2 mm and 6.2 mm pitch

Test adapter

Test adapter - PAI-4-FIX-5/6 BN - 3035981

<https://www.phoenixcontact.com/us/products/3035981>



4 mm test adapter, for terminal blocks with 5.2 mm and 6.2 mm pitch

Disconnect terminal block - PT 2,5-QUATTRO-TGB



3210194

<https://www.phoenixcontact.com/us/products/3210194>

Test adapter

Test adapter - PAI-4-FIX-5/6 WH - 3035983

<https://www.phoenixcontact.com/us/products/3035983>

4 mm test adapter, for terminal blocks with 5.2 mm and 6.2 mm pitch



Test plugs

Test plugs - PS-5 - 3030983

<https://www.phoenixcontact.com/us/products/3030983>

Test plugs, Modular test plug, color: red



Disconnect terminal block - PT 2,5-QUATTRO-TGB



3210194

<https://www.phoenixcontact.com/us/products/3210194>

Spacer plate

Spacer plate - DP PS-5 - 3036725

<https://www.phoenixcontact.com/us/products/3036725>



Spacer plate, length: 22.4 mm, width: 5.2 mm, height: 29 mm, number of positions: 1, color: red

Test plugs

Test plugs - PS-5/2,3MM RD - 3038723

<https://www.phoenixcontact.com/us/products/3038723>



Test plugs, color: red

Disconnect terminal block - PT 2,5-QUATTRO-TGB



3210194

<https://www.phoenixcontact.com/us/products/3210194>

Software

Software - PROJECT COMPLETE - 1050453

<https://www.phoenixcontact.com/us/products/1050453>



Intuitive planning and marking software for configuring terminal strips and for professional marking of marking materials for terminal blocks, conductors, cables, devices, and systems. The software is available for download

End clamp

End clamp - CLIPFIX 35 - 3022218

<https://www.phoenixcontact.com/us/products/3022218>



Quick mounting end clamp for NS 35/7,5 DIN rail or NS 35/15 DIN rail, with marking option, width: 9.5 mm, color: gray

Disconnect terminal block - PT 2,5-QUATTRO-TGB



3210194

<https://www.phoenixcontact.com/us/products/3210194>

End clamp

End clamp - CLIPFIX 35-5 - 3022276

<https://www.phoenixcontact.com/us/products/3022276>

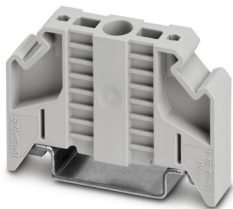


Quick mounting end clamp for NS 35/7,5 DIN rail or NS 35/15 DIN rail, with marking option, with parking option for FBS...5, FBS...6, KSS 5, KSS 6, width: 5.15 mm, color: gray

End clamp

End clamp - E/NS 35 N - 0800886

<https://www.phoenixcontact.com/us/products/0800886>



End clamp, width: 9.5 mm, color: gray

Disconnect terminal block - PT 2,5-QUATTRO-TGB



3210194

<https://www.phoenixcontact.com/us/products/3210194>

Crimping pliers

Crimping pliers - CRIMPFOX CENTRUS 6S - 1213144

<https://www.phoenixcontact.com/us/products/1213144>



Crimping pliers, for uninsulated and insulated ferrules, DIN 46228 Part 1 and 4, from 0.14 mm² ... 6 mm², also for TWIN ferrules up to 2 x 4 mm², automatic cross section adjustment, lateral insertion, equipped with fall protection

Crimping pliers

Crimping pliers - CRIMPFOX CENTRUS 10S - 1213154

<https://www.phoenixcontact.com/us/products/1213154>



Crimping pliers, for uninsulated and insulated ferrules, DIN 46228 Part 1 and 4, from 0.14 mm² ... 10 mm², also for TWIN ferrules up to 2 x 4 mm², automatic cross section adjustment, lateral insertion, equipped with fall protection

Disconnect terminal block - PT 2,5-QUATTRO-TGB



3210194

<https://www.phoenixcontact.com/us/products/3210194>

Crimping pliers

Crimping pliers - CRIMPFOX CENTRUS 6H - 1213146

<https://www.phoenixcontact.com/us/products/1213146>



Crimping pliers, for uninsulated and insulated ferrules, DIN 46228 Part 1 and 4, from 0.14 mm² ... 6 mm², also for TWIN ferrules up to 2 x 4 mm², automatic cross section adjustment, lateral insertion, equipped with fall protection

Crimping pliers

Crimping pliers - CRIMPFOX CENTRUS 10H - 1213156

<https://www.phoenixcontact.com/us/products/1213156>



Crimping pliers, for uninsulated and insulated ferrules, DIN 46228 Part 1 and 4, from 0.14 mm² ... 10 mm², also for TWIN ferrules up to 2 x 4 mm², automatic cross section adjustment, lateral insertion, equipped with fall protection

Disconnect terminal block - PT 2,5-QUATTRO-TGB



3210194

<https://www.phoenixcontact.com/us/products/3210194>

Crimping pliers

Crimping pliers - CRIMPFOX 10S - 1212045

<https://www.phoenixcontact.com/us/products/1212045>



Crimping pliers, for ferrules without insulating collar according to DIN 46228 Part 1 and ferrules with insulating collar according to DIN 46228 Part 4, 0.14 mm² ... 10 mm², unlockable pressure lock, lateral entry

Crimping pliers

Crimping pliers - CRIMPFOX 6H - 1212046

<https://www.phoenixcontact.com/us/products/1212046>



Crimping pliers, for ferrules without insulating collar according to DIN 46228 Part 1 and ferrules with insulating collar according to DIN 46228 Part 4, 0.14 mm² ... 6 mm², unlockable pressure lock, lateral entry

Disconnect terminal block - PT 2,5-QUATTRO-TGB



3210194

<https://www.phoenixcontact.com/us/products/3210194>

Crimping pliers

Crimping pliers - CRIMPFOX 2,5-M - 1212719

<https://www.phoenixcontact.com/us/products/1212719>



Crimping pliers, for ferrules without insulating collar according to DIN 46228 Part 1 and ferrules with insulating collar according to DIN 46228 Part 4, 0.25 mm² ... 2.5 mm², lateral entry, trapezoidal crimp

Crimping pliers

Crimping pliers - CRIMPFOX 6-M - 1212720

<https://www.phoenixcontact.com/us/products/1212720>



Crimping pliers, for ferrules without insulating collar according to DIN 46228 Part 1 and ferrules with insulating collar according to DIN 46228 Part 4, 0.25 mm² ... 6.0 mm², lateral entry, trapezoidal crimp

Disconnect terminal block - PT 2,5-QUATTRO-TGB



3210194

<https://www.phoenixcontact.com/us/products/3210194>

Crimping pliers

Crimping pliers - CRIMPFOX 6 - 1212034

<https://www.phoenixcontact.com/us/products/1212034>



Crimping pliers, for ferrules without insulating collar according to DIN 46228 Part 1 and ferrules with insulating collar according to DIN 46228 Part 4, 0.25 mm² ... 6.0 mm², lateral entry, trapezoidal crimp

Crimping pliers

Crimping pliers - CRIMPFOX 6T - 1212037

<https://www.phoenixcontact.com/us/products/1212037>



Crimping pliers, for ferrules without insulating collar according to DIN 46228 Part 1 and ferrules with insulating collar according to DIN 46228 Part 4, 0.25 mm² ... 6 mm², lateral entry, trapezoidal crimp

Disconnect terminal block - PT 2,5-QUATTRO-TGB



3210194

<https://www.phoenixcontact.com/us/products/3210194>

Crimping pliers

Crimping pliers - CRIMPFOX 6T-F - 1212038

<https://www.phoenixcontact.com/us/products/1212038>



Crimping pliers, for ferrules without insulating collar according to DIN 46228 Part 1 and ferrules with insulating collar according to DIN 46228 Part 4, 0.25 mm² ... 6 mm², front entry, trapezoidal crimp

Crimping pliers

Crimping pliers - CRIMPFOX 6S-F - 1212043

<https://www.phoenixcontact.com/us/products/1212043>



Crimping pliers, for ferrules without insulating collar according to DIN 46228 Part 1 and ferrules with insulating collar according to DIN 46228 Part 4, 0.5 mm² ... 6 mm², front entry, square crimp

Disconnect terminal block - PT 2,5-QUATTRO-TGB



3210194

<https://www.phoenixcontact.com/us/products/3210194>

Crimping pliers

Crimping pliers - CRIMPFOX-M - 1212072

<https://www.phoenixcontact.com/us/products/1212072>



Basic pliers, for accommodating dies for a wide range of type of contacts

Isolating plugs

Isolating plugs - P-DI - 3036783

<https://www.phoenixcontact.com/us/products/3036783>



Isolating plugs, length: 10.8 mm, width: 3.5 mm, height: 23.1 mm, color: orange

Disconnect terminal block - PT 2,5-QUATTRO-TGB



3210194

<https://www.phoenixcontact.com/us/products/3210194>

Isolating plugs

Isolating plugs - P-DI GY - 3047390

<https://www.phoenixcontact.com/us/products/3047390>

Isolating plugs, length: 10.8 mm, width: 3.5 mm, height: 23.1 mm, color: gray



Feed-through connector

Feed-through connector - P-FIX - 3038956

<https://www.phoenixcontact.com/us/products/3038956>

Feed-through connector, length: 10.5 mm, width: 4 mm, color: gray



Disconnect terminal block - PT 2,5-QUATTRO-TGB



3210194

<https://www.phoenixcontact.com/us/products/3210194>

Component connector

Component connector - P-CO - 3036796

<https://www.phoenixcontact.com/us/products/3036796>



Component connector, for installing components that can be individually selected, nominal current: 6 A, pitch: 5.2 mm, length: 24.2 mm, width: 5.1 mm, height: 33.2 mm, number of positions: 1, color: gray

Component connector

Component connector - P-CO 1N4007/R-L - 3032457

<https://www.phoenixcontact.com/us/products/3032457>



Component connector, with diode 1N4007, length: 24.2 mm, width: 5.2 mm, height: 33.3 mm, number of positions: 1, color: gray

Disconnect terminal block - PT 2,5-QUATTRO-TGB



3210194

<https://www.phoenixcontact.com/us/products/3210194>

Component connector

Component connector - P-CO 1N4007/L-R - 3032460

<https://www.phoenixcontact.com/us/products/3032460>



Component connector, with diode 1N4007, length: 24.2 mm, width: 5.2 mm, height: 33.3 mm, number of positions: 1, color: gray

Component connector

Component connector - P-CO XL - 3036797

<https://www.phoenixcontact.com/us/products/3036797>



Component connector, for installing components that can be individually selected up to a diameter of 10 mm and power dissipation of up to 1 W, nominal current: 10 A, length: 41.2 mm, width: 12.3 mm, height: 37.5 mm, number of positions: 1, color: gray

Disconnect terminal block - PT 2,5-QUATTRO-TGB



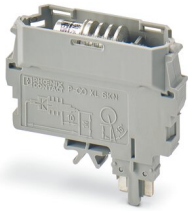
3210194

<https://www.phoenixcontact.com/us/products/3210194>

Component connector

Component connector - P-CO XL SKN - 3036798

<https://www.phoenixcontact.com/us/products/3036798>



Component connector, specifically for holding the SKN 2,5 diode, nominal current: 10 A, length: 41.2 mm, width: 12.3 mm, height: 37.5 mm, number of positions: 1, color: gray

Fuse plug

Fuse plug - P-FU 5X20-5 - 3209235

<https://www.phoenixcontact.com/us/products/3209235>



Fuse plug, Suitable for terminal blocks with a width of 5.2 mm and above with TG zone, nom. voltage: 400 V, nominal current: 6.3 A, connection method: Plug-in connection, fuse type: G / 5 x 20, mounting type: Plug-in mounting, color: black

Disconnect terminal block - PT 2,5-QUATTRO-TGB



3210194

<https://www.phoenixcontact.com/us/products/3210194>

Fuse plug

Fuse plug - P-FU 5X20 LED 24-5 - 3209248

<https://www.phoenixcontact.com/us/products/3209248>



Fuse plug, Suitable for terminal blocks with a width of 5.2 mm and above with TG zone, nom. voltage: 24 V, nominal current: 6.3 A, connection method: Plug-in connection, fuse type: G / 5 x 20, mounting type: Plug-in mounting, color: black

Fuse plug

Fuse plug - P-FU 5X20 LED 60-5 - 3209251

<https://www.phoenixcontact.com/us/products/3209251>



Fuse plug, Suitable for terminal blocks with a width of 5.2 mm and above with TG zone, nom. voltage: 250 V, nominal current: 6.3 A, connection method: Plug-in connection, fuse type: G / 5 x 20, mounting type: Plug-in mounting, color: black

Disconnect terminal block - PT 2,5-QUATTRO-TGB



3210194

<https://www.phoenixcontact.com/us/products/3210194>

Fuse plug

Fuse plug - P-FU 5X20 LED 250-5 - 3209264

<https://www.phoenixcontact.com/us/products/3209264>



Fuse plug, Suitable for terminal blocks with a width of 5.2 mm and above with TG zone, nom. voltage: 250 V, nominal current: 6.3 A, connection method: Plug-in connection, fuse type: G / 5 x 20, mounting type: Plug-in mounting, color: black

Phoenix Contact 2023 © - all rights reserved

<https://www.phoenixcontact.com>

Phoenix Contact USA
586 Fulling Mill Road
Middletown, PA 17057, United States
(+717) 944-1300
info@phoenixcon.com