

PRODUCT NUMBER

10075025-XXX-XXXLF

PLATING _____

S = 0.38µm GOLD/GXT ON CONTACT AREA
2µm MIN MATTE TIN ON TAIL

G = 0.76µm GOLD/GXT ON CONTACT AREA
2µm MIN MATTE TIN ON TAIL

F = GOLD FLASH ON CONTACT AREA
2µm MIN MATTE TIN ON TAIL
1.27µm MIN NICKEL UNDERPLATING

LEAD FREE
ROHS COMPATIBLE
NOTE 7

PACKAGING
NOTE 5

TOTAL NUMBER OF
POSITIONS 04 TO 50

PIN STYLE	TAIL LENGTH	MISSING PIN POSITION
01	2.00	
02	2.50	
03	2.00	A01
04	5.00	

NOTES:

- MATERIAL HOUSING: HIGH TEMP. THERMOPLASTIC
UL 94V-0, COLOR NATURAL
- MATERIAL TERMINAL: COPPER ALLOY
- TO DETERMINE DIMENSIONS:
N = NUMBER OF POSITIONS PER ROW
- 7N MIN. PIN RETENTION IN EITHER DIRECTION.
- PACKAGING:
= STANDARD PACKAGING IN POLYBAG
U = TUBE AVAILABLE FROM 03 TO 25 POS PER ROW
A = TAPE & REEL WITH PICK UP CAP, AS AVAILABLE.

6. POLARIZATION:

- SEE TABLE FOR AVAILABILITY
- FOR NEW REQUEST, PLEASE TO CONTACT FCI

7. ROHS COMPATIBLE PRODUCT SPECIFICATIONS

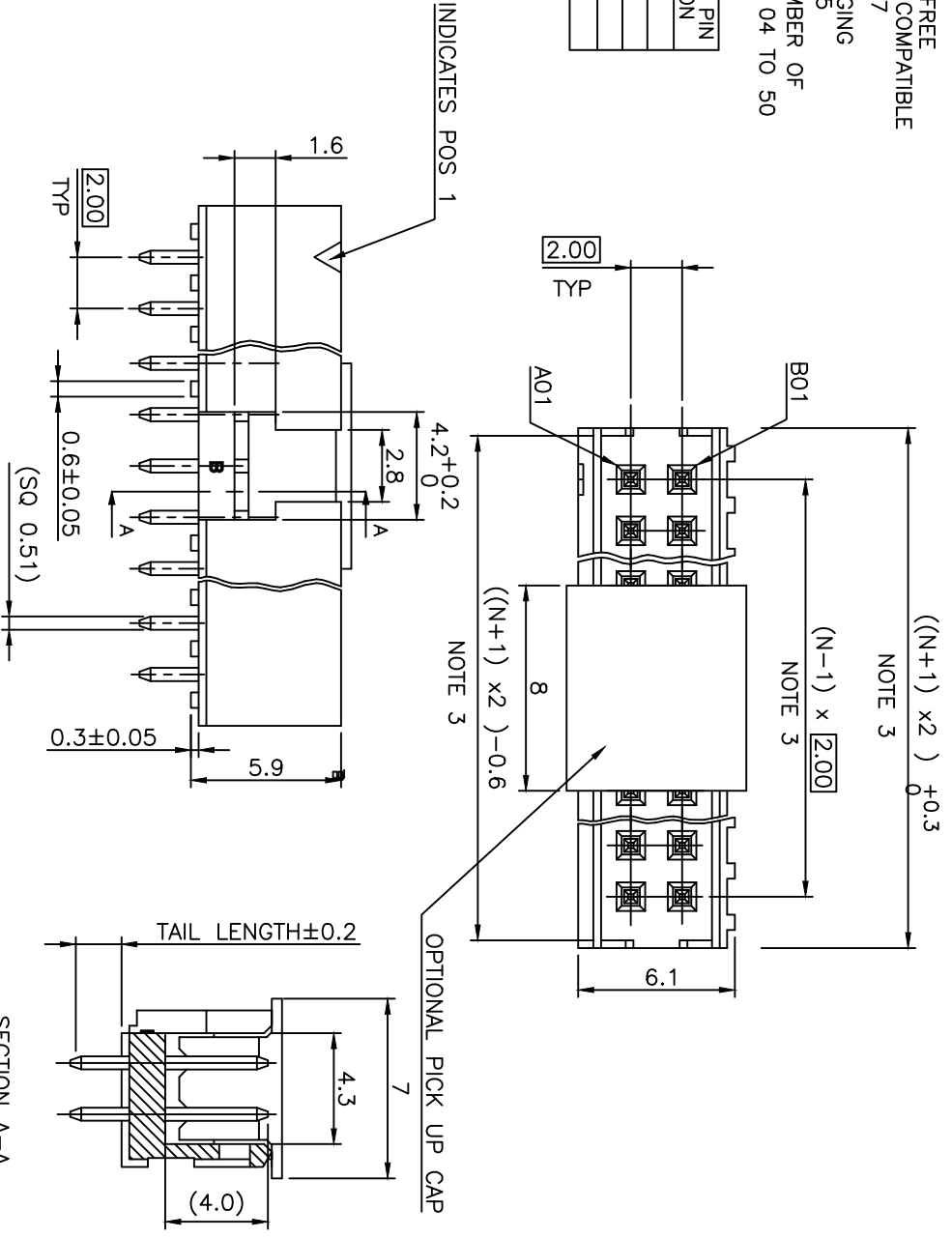
- PLATING:
- "LF" MEANS THE PRODUCT IS LEAD-FREE,
2µm MINIMUM MATTE TIN OVER 1.27µm
MINIMUM NICKEL UNDERPLATE.

b - MANUFACTURING PROCESS COMPATIBILITY

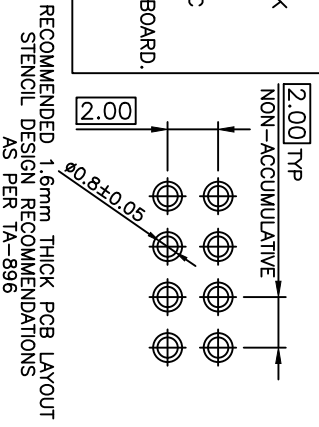
- THE HOUSING WILL WITHSTAND EXPOSURE TO 260°C PEAK TEMPERATURE FOR 30 SECONDS MAX IN A CONVECTION, INFRA-RED, OR VAPOR PHASE OR REFLOW OVEN
- THE HOUSING WILL WITHSTAND EXPOSURE TO 260°C ±5°C SOLDER BATH TEMPERATURE FOR 5 SECONDS IN A WAVE SOLDER APPLICATION WITH A 1.6mm MIN THICK CIRCUIT BOARD.

c - LABELLING:

- MEETS PACKAGING SPECS AS PER GS-14-920
- LEGAL STATEMENT: SEE GS-47-0004

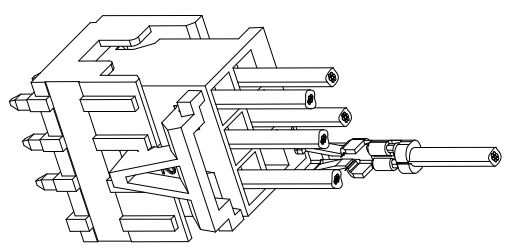
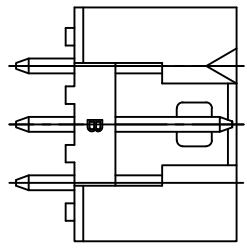
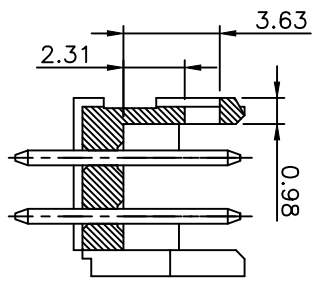
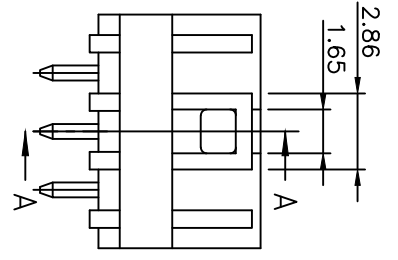


PRELIMINARY

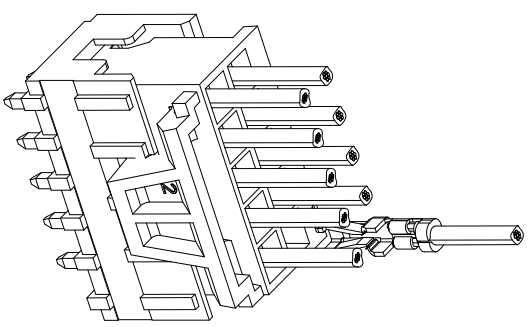
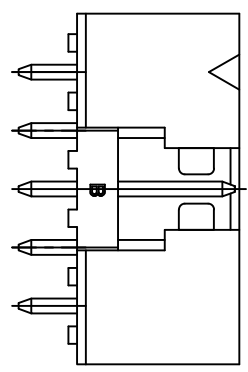
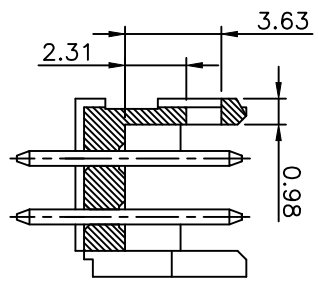
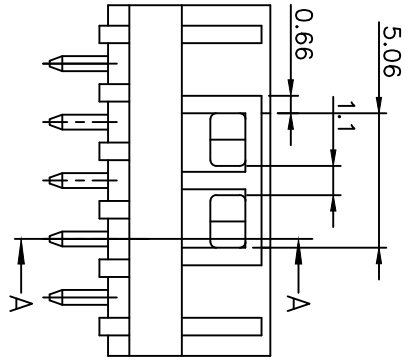


mat'l. code	surface	tolerance	projection	product family
150 1302	ISO 1302	ISO 406 ISO 100		MINITEK
ltr	ecn no	dr	date	tolerance unless otherwise specified
R	F-23051	AMA	16.01.15	.x ±0.3
S	F-24837	AMA	16.08.29	linear .xx ±0.15
T	F-24838	LMU	16.08.29	.xxx ±0.05
U	F-34620	DDE	19.08.20	L MULIN
N	B-20254	LMU	15.02.16	eng' J.COMPAIGNON
P	B-21209	AMA	15.06.22	JM.C
sheet	revision	U	B	07.01.04
index	sheet	1	2	

title	product family	type
UNSHR. HEADER	MINITEK	CUSTOMER
2.00 mm VERTICAL PIP		
10075025		
sheet 1 of 2		
A3		



2x3 POS AND 2x4 POS CONFIGURATION
NO LATCHING AVAILABLE FOR 2x2 POS



2x5 POS UP TO 2x25 POS CONFIGURATION

LATCHING FEATURES WHEN USED IN COMBINATION
WITH ACTIVE LATCH HOUSING 10073599

mat'l. code	surface	tolerance	projection	product family
	ISO 1302	ISO 406 ISO 1001	1st angle	MINITEK
	tolerances unless otherwise specified			
ltr Ecn no	dr	date	angles	linear
A F06-0113LMU	08.01.07		x .40.3	
B B-17556 JCO	14.04.23		xxx .40.5	
	dr	L MULIN	07.12.04	
	engr	J.COMPAGNON	07.12.04	
	chr			
	appt	JM.C	07.12.04	
sheet	revision			
index	sheet			
title				2.00 mm VERTICAL PIP
type				CUSTOMER Drawing
dwg no				10075025
sheet				2 of 2
size				A3