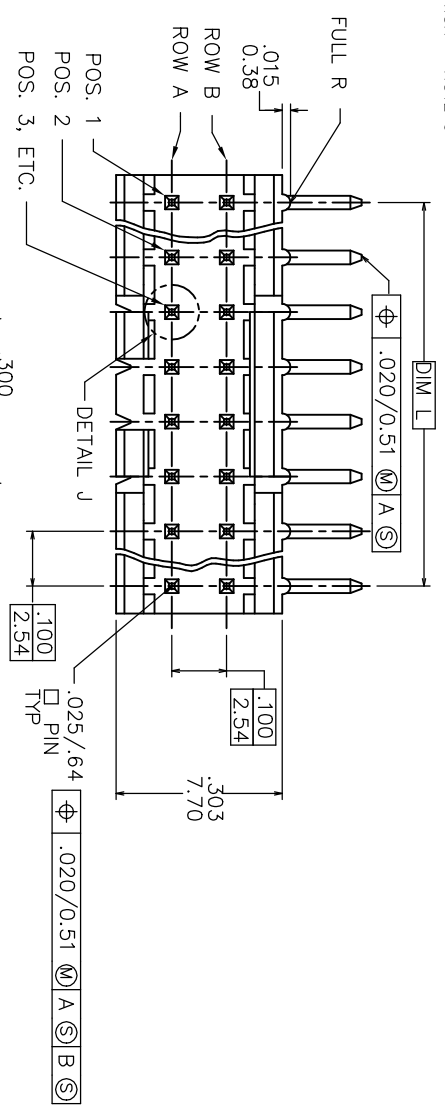
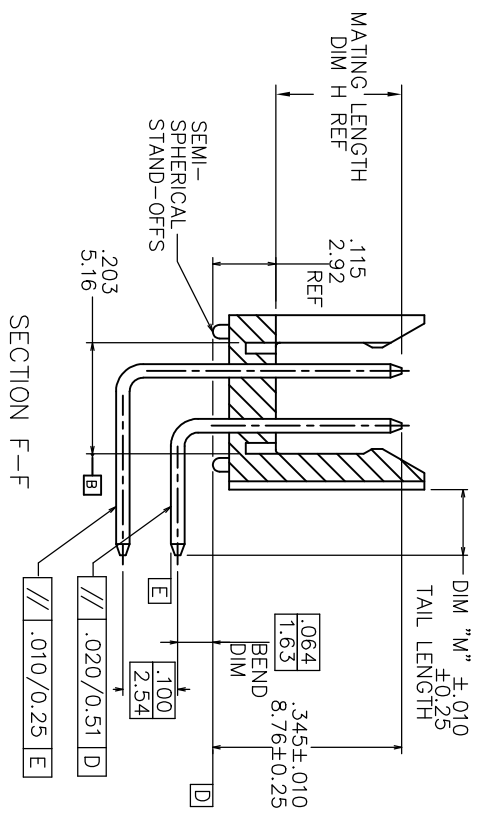
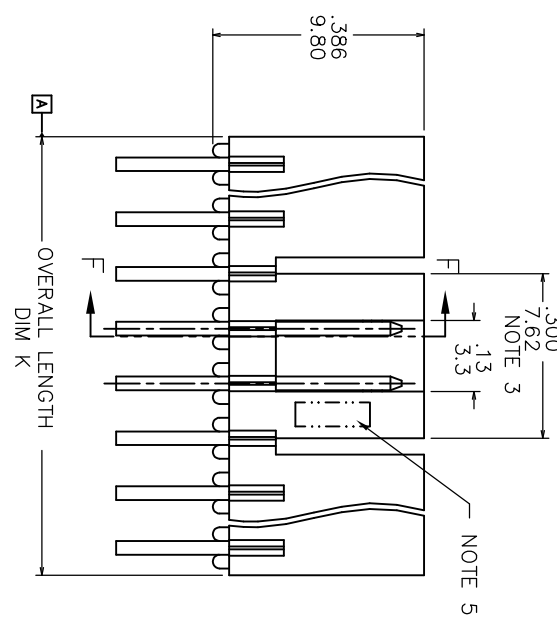


PRODUCT NO.  
78207-XYTZHLF  
LEAD FREE OPTION - NOTE 8, 9, 10  
CUSTOMER SPECIALS - NOTE 7  
TUBE PACKAGING OPTION - NOTE 6  
NO. OF POSITIONS  
SEE TABLE  
PIN PLATING  
BASE P/N



DETAIL J  
SCALE 4/1  
NOTE 4



|             |           |          |          |                                       |  |            |  |                          |  |
|-------------|-----------|----------|----------|---------------------------------------|--|------------|--|--------------------------|--|
| Mat'l. code |           | surface  |          | tolerance                             |  | projection |  | product family           |  |
| NTFES 1 & 2 |           | ISO 1302 |          | ASME Y14.5                            |  | ASME Y14.5 |  | FRICION LATCH HEADER     |  |
| tr          | ecm no    | dr       | date     | tolerances unless otherwise specified |  | inches/mm  |  | title                    |  |
| U           | EX-4-1910 | JZ       | 05/31/12 | linear                                |  | Scale 1:1  |  | FRICION LATCH HEADER     |  |
| V           | EX-4-2722 | NZ       | 05/29/20 | 0±2°                                  |  | Scale 1:1  |  | DOUBLE ROW R/A           |  |
|             |           |          |          |                                       |  |            |  | sheet 1 of 2             |  |
|             |           | dr       | S. ROVER |                                       |  |            |  | size                     |  |
|             |           | engr     | LFYE     |                                       |  |            |  | A3                       |  |
|             |           | chr      | LFYE     |                                       |  |            |  | type                     |  |
|             |           | pppd     | LFYE     |                                       |  |            |  | Product Customer Drawing |  |
| sheet       | revision  | V        | V        |                                       |  |            |  |                          |  |
| index       | sheet     | 1        | 2        |                                       |  |            |  |                          |  |

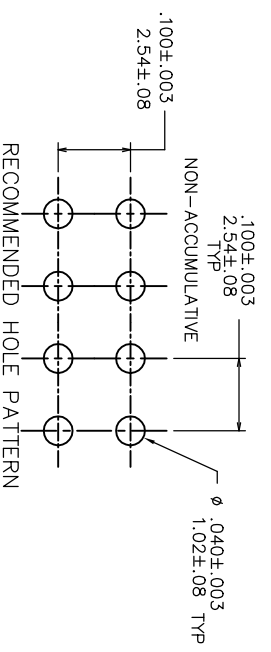
| PRODUCT NUMBER | NO. OF POS | MATING LENGTH DIM H   | OVERALL LENGTH DIM K | DIM L       | TAIL LENGTH DIM M |
|----------------|------------|-----------------------|----------------------|-------------|-------------------|
| 78207-X06      | 2 X 3      | .230/5.84             | .300/7.62            | .200/5.08   | .120/3.05         |
| -X08           | 2 X 4      | .230/5.84             | .400/10.16           | .300/7.62   |                   |
| -X10           | 2 X 5      | .230/5.84             | .500/12.70           | .400/10.16  |                   |
| -X12           | 2 X 6      | .230/5.84             | .600/15.24           | .500/12.70  |                   |
| -X14           | 2 X 7      | .230/5.84             | .700/17.78           | .600/15.24  |                   |
| -X16           | 2 X 8      | .230/5.84             | .800/20.32           | .700/17.78  |                   |
| -X18           | 2 X 9      | .230/5.84             | .900/22.86           | .800/20.32  |                   |
| -X18A          | 2 X 9      | .210/5.33             | .900/22.86           | .800/20.32  |                   |
| -X20           | 2 X 10     | .230/5.84             | 1.000/25.40          | .900/22.86  |                   |
| -X22           | 2 X 11     | .230/5.84             | 1.100/27.94          | 1.000/25.40 |                   |
| -X24           | 2 X 12     | .230/5.84             | 1.200/30.48          | 1.100/27.94 |                   |
| -X26           | 2 X 13     | .230/5.84             | 1.300/33.02          | 1.200/30.48 |                   |
| -X28           | 2 X 14     | .230/5.84             | 1.400/35.56          | 1.300/33.02 |                   |
| 78207-X30      | 2 X 15     | .230/5.84             | 1.500/38.10          | 1.400/35.56 | .120/3.05         |
| 78207-X32      |            |                       |                      |             |                   |
| THRU           |            | U N A V A I L A B L E |                      |             |                   |
| 78207-X72      |            |                       |                      |             |                   |
| 78207-X80      | 2 X 4      | .230/5.84             | .400/10.16           | .300/7.62   | .100/2.54         |

PIN PLATING CODES

|         |  |                      |
|---------|--|----------------------|
| -1YY    | 30u" / .76u (SEE NOTE 11)                          | 50u" / 1.27u NI      |
| -2YY    | 15u" / .38u (SEE NOTE 11)                          | 50u" / 1.27u NI      |
| -3YY    | 50u" / 1.27u (SEE NOTE 11)                         | 50u" / 1.27u NI      |
| -4YY    | 100u" / 2.54u MIN SN 50u" / 1.27u NI (SEE NOTE 12) |                      |
| -4YYHLF |  |                      |
| -5YY    | 15u" / .38u (SEE NOTE 11)                          | 50u" / 1.27u NI      |
| -6YY    | 30u" / .76u (SEE NOTE 11)                          | 50u" / 1.27u NI      |
| -7YY    | 30u" / .76u (SEE NOTE 11)                          | OVER 50u" / 1.27u NI |
| -8YY    | 15u" / .38u (SEE NOTE 11)                          | OVER 50u" / 1.27u NI |

NOTE 7

- NOTES:
1. MOLDING MAT'L: GLASS REINFORCED HTN OR MINERAL FILLED LCP. COLOR: BLACK  
FLAME RETARDANT PER UL 94 V-0  
MAXIMUM OPERATING TEMPERATURE: 130° C.
  2. PIN MATERIAL: 3/4 HD PHOS. BRZ.
  3. NO SLOTS ON 2 X 5 POSITION OR SMALLER PRODUCT. THE CENTER KEY SLOT WILL BE ON ALL HEADERS REGARDLESS OF SIZE.
  4. TWO NON-CRITICAL SIDES OF PIN TIP NOT PLATED, BOTH ENDS.
  5. COMPANY LOGO MAY APPEAR IN THIS AREA.
  6. "T" ATTACHED TO THE P/N INDICATES PARTS ARE TO BE PACKAGED IN TUBES.
  7. CUSTOMER SPECIAL -- "A" SUFFIX INDICATES 0.210/5.33 MATING LENGTH.
  8. ADD "HLF" SUFFIX AT THE END OF PART NUMBER FOR LEAD FREE OPTION, NOT AVAILABLE FOR -5YY, -5YYH, -6YY & -6YYH.
  9. PART NUMBERS WITH "H" SUFFIX WILL WITHSTAND EXPOSURE TO 260°C PEAK TEMPERATURE FOR 20 SECONDS IN WAVE SOLDER, INFRA-RED OR VAPOR PHASE SOLDER PROCESS.
  10. THIS PRODUCT MEETS EUROPEAN UNION DIRECTIVES AND OTHER COUNTRY REGULATION AS DESCRIBED IN GS-22-008.
  11. PLATING OPTIONS:  
PERFORMANCE PLATING WILL BE EITHER GOLD OR GXT ON CONTACT OR TAIL, OPTIONALLY (78~295u" / 2~7.5u) TIN ON TAIL.
  12. "THIS PRODUCT HAS 100% TIN PLATING IN THE INTERFACE AND HAS NOT BEEN TESTED FOR WHISKER GROWTH IN ALL INTERCONNECT ENVIRONMENTS."



RECOMMENDED HOLE PATTERN

| Mat'l. code | surface                               | tolerance  | projection | product family |
|-------------|---------------------------------------|------------|------------|----------------|
| NOTES 1 & 2 | ISO 1302                              | ASME Y14.5 |            |                |
| (tr)        | ecm no                                | dir        | date       |                |
| V           | tolerances unless otherwise specified | angles     | linear     | angular        |
|             |                                       | 0±2°       | max/min    | max/min        |
|             |                                       |            | Scale 1:1  |                |
|             | dr                                    | S. ROYER   | 11/14/94   |                |
|             | engr                                  | L.FYE      | 11/14/94   |                |
|             | chr                                   | L.FYE      | 11/14/94   |                |
|             | pppd                                  | L.FYE      | 11/14/94   |                |
| sheet index | revision                              |            |            |                |
|             | sheet                                 |            |            |                |

| dwg no | sheet 2 of 2 | size |
|--------|--------------|------|
| 78207  |              | A3   |



FRICION LATCH HEADER  
DOUBLE ROW R/A