

AS39029 (FORMER MIL-C-39029) QPL LISTED CONTACTS



FOR HARSH ENVIRONMENTS
WITH PATENTED REVERSED CLIP
TECHNOLOGY



preci-dip

swiss world connects



REVERSED-CLIP SOCKET CONTACT TECHNOLOGY

CONTACT DESIGN

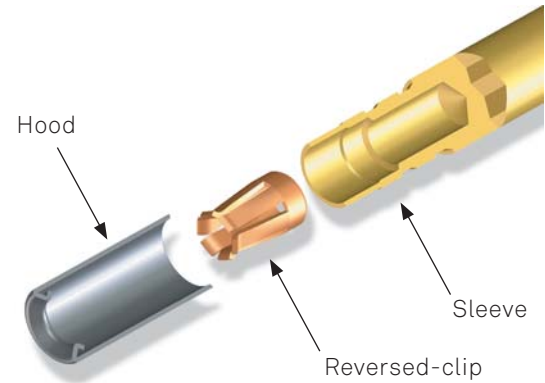
The contact consists of three parts, separately manufactured and made of different base materials. This design allows to optimise the performance and to select the most appropriate production process individually:

- Contact body made of machined brass
- Reversed-clip made of stamped and formed beryllium-copper
- Protection hood made of deep-drawn stainless steel

Separate electroplating processes of body and clip allow the best cost-performance ratio. The assembly of the three parts is then carried out on dedicated, fully automatic assembly lines.

Reversed-clip contacts are presently available in size 12, 16, 20 and 22. This proprietary technology, entirely developed by PRECI-DIP, is protected by international patents.

EXPLODED VIEW OF SOCKET CONTACT



First engagement point



ADVANTAGES AND CHARACTERISTICS

In comparison with the traditional slotted contact body, the reversed-clip design has several advantages:

- Smaller difference between insertion and extraction force
- Reduced dispersion of the force values
- Better redundancy at the level of the contact point, thanks to 6 or 8 contact fingers

We are also manufacturing the corresponding precision-machined pin contacts.

These contacts have successfully passed all the qualification tests according to AS39029 and are QPL listed.

TECHNICAL SPECIFICATIONS

Operating temperature range from -65 to +200°C

MATERIALS & PLATING

PIN CONTACT

• Material:	Machined brass C34500
• Overall finish:	Gold plated acc. to ASTM B488, Type II, C, min. 1.27 µm over 2.5 µm Ni
• Localized finish:	Contact area: Gold plated acc. to ASTM B488, Type II, C, min. 1.27 µm over 2.5 µm Ni Other surfaces: Gold plated acc. to ASTM B488, Type II, C, over 2.5 µm Ni

SOCKET CONTACT

SLEEVE

• Material:	Machined brass C34500
• Overall finish:	Gold plated acc. to ASTM B488, Type II, C, over 2.5 µm Ni

REVERSED CLIP

• Material:	BeCu C17200
• Overall finish:	Gold plated acc. to ASTM B488, Type II, C, min. 1.27 µm over 2.5 µm Ni

HOOD

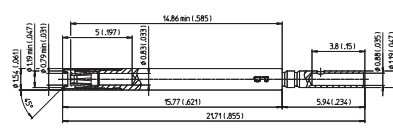
• Material:	Corrosion-resistant steel
-------------	---------------------------

AS39029 CONTACTS

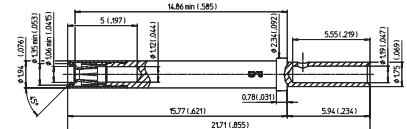


SOCKET CONTACT FOR CONNECTOR TYPES : • MIL-DTL-38999 SERIES I, III, IV

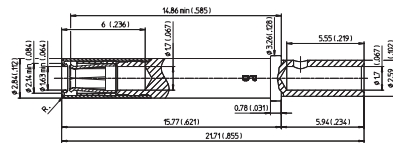
MILITARY P/N AS/M39029/56-348
 PRECI-DIP P/N 83011-1P4-7010-B1
 MATING END SIZE 22
 WIRE BARREL SIZE 22D
 COLOUR BANDS ORANGE, YELLOW, GREY



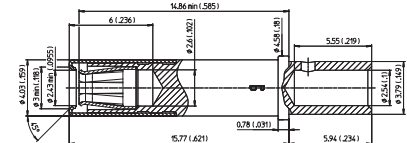
AS/M39029/56-351
 83021-1P4-7110-B1
 20
 20
 ORANGE, GREEN, BROWN



MILITARY P/N AS/M39029/56-352
 PRECI-DIP P/N 83031-1P4-7210-B1
 MATING END SIZE 16
 WIRE BARREL SIZE 16
 COLOUR BANDS ORANGE, GREEN, RED

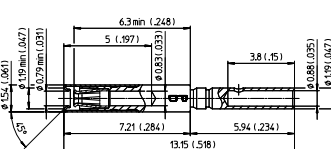


AS/M39029/56-353
 83041-1P4-7310-B1
 12
 12
 ORANGE, GREEN, ORANGE



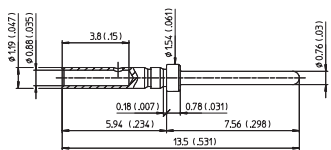
SOCKET CONTACT FOR CONNECTOR TYPES : • MIL-DTL-38999 SERIES II • MIL-DTL-24308 MIL-DTL-55302 MIL-DTL-83733

MILITARY P/N AS/M39029/57-354
 PRECI-DIP P/N 83101-7Q4-7010-B1
 MATING END SIZE 22
 WIRE BARREL SIZE 22D
 COLOUR BANDS ORANGE, GREEN, YELLOW

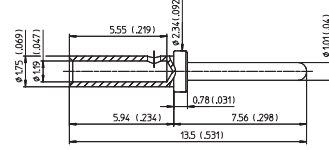


PIN CONTACT FOR CONNECTOR TYPES : • MIL-DTL-38999 SERIES I, II, III, IV • MIL-DTL-24308 MIL-DTL-55302/69 MIL-DTL-83733

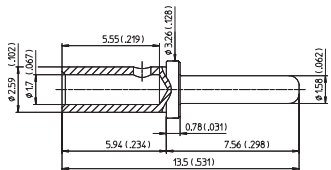
MILITARY P/N AS/M39029/58-360
 PRECI-DIP P/N 82011-40-01
 • overall finish 82011-7Q4-01
 • localized finish
 MATING END SIZE 22
 WIRE BARREL SIZE 22D
 COLOUR BANDS ORANGE, BLUE, BLACK



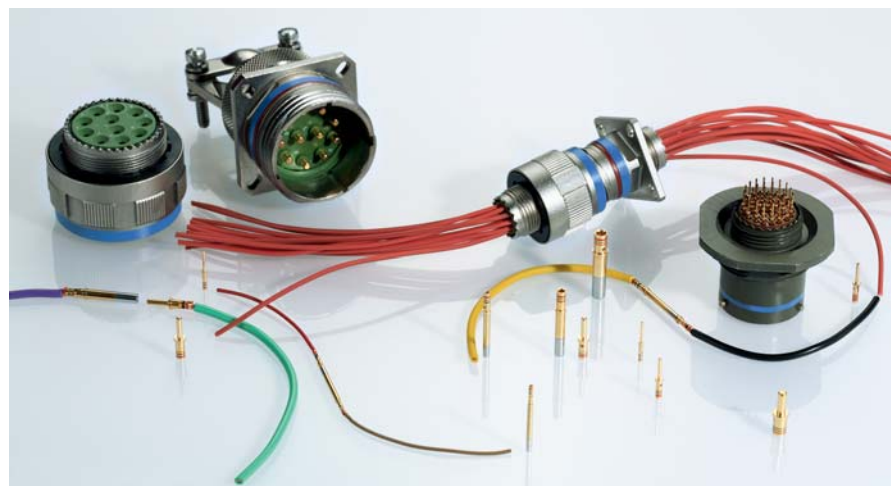
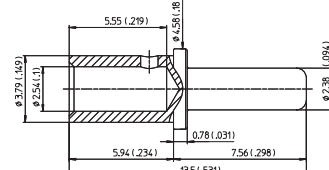
AS/M39029/58-363
 82021-40-01
 82021-7Q4-01
 20
 20
 ORANGE, BLUE, ORANGE



MILITARY P/N AS/M39029/58-364
 PRECI-DIP P/N 82031-40-01
 • overall finish 82031-7Q4-01
 • localized finish
 MATING END SIZE 16
 WIRE BARREL SIZE 16
 COLOUR BANDS ORANGE, BLUE, YELLOW



AS/M39029/58-365
 82041-40-01
 82041-7Q4-01
 12
 12
 ORANGE, BLUE, GREEN



ENJOY THE BENEFITS



preci-dip

HEADED FOR SUCCESS

Awards from prestigious institutions and customers. Major certifications. World-wide recognition. For ongoing innovation, perfect teamwork, environmental responsibility as well as entrepreneurial excellence and sustained growth. In short, for swiss quality.

- Complete range of highly reliable interconnect components
- Diverse fields of application
- Effective management system
- In-house manufacturing –from raw material to finished product
- Highly skilled and motivated workforce
- Strong customer support
- Custom design
- Competitive pricing, flexibility and swiss quality
- Worldwide presence
- Prestigious client base

AROUND THE WORLD

More than 100 Distributors around the world distribute preci-dip products across the five continents.



www.precidip.com

PRECI-DIP SA Rue Saint-Henri 11 34 P.O.Box 834 CH-2800 Delémont /Switzerland
PHONE +41 (0)32 421 04 00 FAX +41 (0)32 421 04 01 E-MAIL sales@precidip.com www.precidip.com