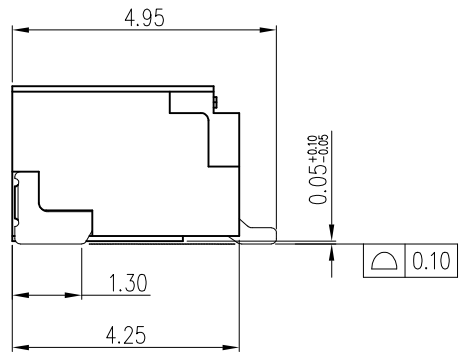
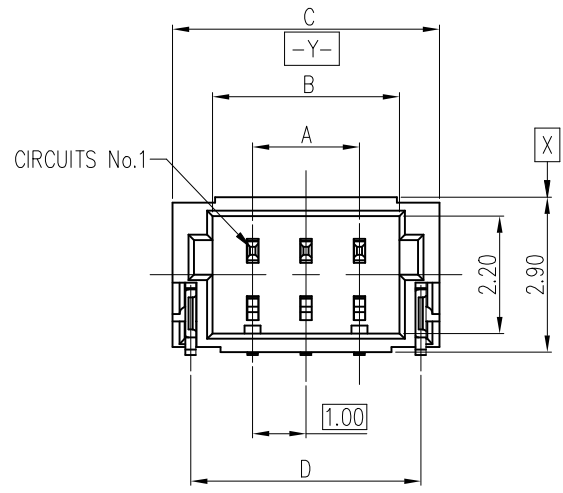


CUSTOMIZED TYPE (VOID 3PINS IN MIDDLE)  
ONLY FOR 10147606-XXX05VLF



NOTES:

1. MATERIAL SPECIFICATION
  - 1.1 INSULATION: PA9T UL 94V-0.
  - 1.2 CONTACT: THICK 0.20mm BRASS.
  - 1.3 SOLDER TAB: THICK 0.20mm BRASS.
2. PLATING SPECIFICATION
  - 2.1 CONTACT: MATTE TIN/GOLD PLATED.
  - 2.2 SOLDER TAB: MATTE TIN PLATED.
3. PRODUCT SPEC: GS-12-1465
4. PACKAGING SPEC: GS-14-2613
5. USE WITH AFCI HOUSING 10147603
6. THIS HOUSING WILL WITHSTAND EXPOSURE TO 260°C PEAK TEMP FOR 10S IN A REFLOW OVEN.
7. BILL OF PART NO: 10147606 - X X X XX X LF

MATERIAL  
 0: PA9T NATURAL  
 1: PA9T BLACK  
 2: PA9T NATURAL HALOGEN FREE  
 3: PA9T BLACK HALOGEN FREE

LEAD FREE  
 EXTEND CODE  
 BLANK: GENERAL OPTION  
 V: CUSTOMIZED OPTION

TOTAL POSITIONS  
 02 TO 20

PACKAGING  
 0: TAPE&REEL

PLATING  
 0: 100u" MATTE TIN  
 1: GOLD FLASH

DIMENSIONAL

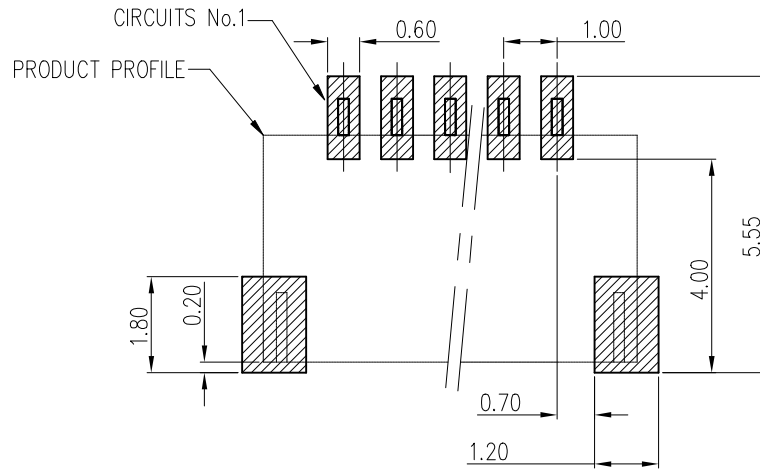
POS	A	B	C	D	POS	A	B	C	D
2	1.00	2.50	4.00	3.30	12	11.00	12.50	14.00	13.30
3	2.00	3.50	5.00	4.30	13	12.00	13.50	15.00	14.30
4	3.00	4.50	6.00	5.30	14	13.00	14.50	16.00	15.30
5	4.00	5.50	7.00	6.30	15	14.00	15.50	17.00	16.30
6	5.00	6.50	8.00	7.30	16	15.00	16.50	18.00	17.60
7	6.00	7.50	9.00	8.30	17	16.00	17.50	19.00	18.30
8	7.00	8.50	10.00	9.30	18	17.00	18.50	20.00	19.30
9	8.00	9.50	11.00	10.30	19	18.00	19.50	21.00	20.30
10	9.00	10.50	12.00	11.30	20	19.00	20.50	22.00	21.30
11	10.00	11.50	13.00	12.30					

mat'l. code		surface ISO 1302		tolerance ISO 406		projection ISO 1101		product family Minitek	
ltr	ecn no	dr	date	tolerances unless otherwise specified		title		1.0mm Right Angle Header	
B	ELX-N-35727	Jason	2019-12-25	angles	.0±.30	mm		dwg no 10147606	
D	ELX-N-41144	Jason	2021-6-22	linear	.00±.20	scale 1:1		sheet 1 of 2	
E	ELX-N-42589	Jason	2021-10-14	0'±x'	.000±.10	Amphenol FCI		size A3	
F	ELX-N-45365	YS	2022-07-12	dr	TONY LENG	2018-03-19	type Product Customer Drawing		
				eng	Jason Wang	2021-10-14			
				chr	-	-			
				appd	TIM YAO	2021-10-14			
sheet index	revision sheet	F 1	F 2						

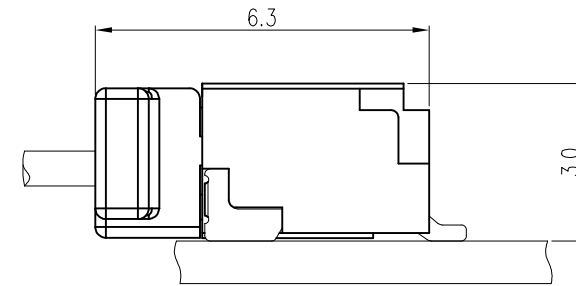
Amphenol FCI  
© 2016 AFCI

Amphenol  
FCI

© 2016 AFCI



RECOMMENDED PCB LAYOUT(TOP SIDE)  
GENERAL TOLERANCE  $\pm 0.05$



ASSEMBLY LAYOUT  
SIDE ENTRY TYPE

mat'l. code		surface		tolerance		projection		product family	
		ISO 1302		ISO 406		ISO 1101		Minitek	
ltr		ecn no		dr		date		title	
F								1.0mm Right Angle Header	
				angles		linear		mm	
								scale 1:1	
				dr		2018-03-19		dwg no	
				eng		2021-10-14		sheet 2 of 2	
				chr				size	
				appd		2021-10-14		A3	
								type	
								Product Customer Drawing	
sheet index		revision sheet		F		F			
				1		2			