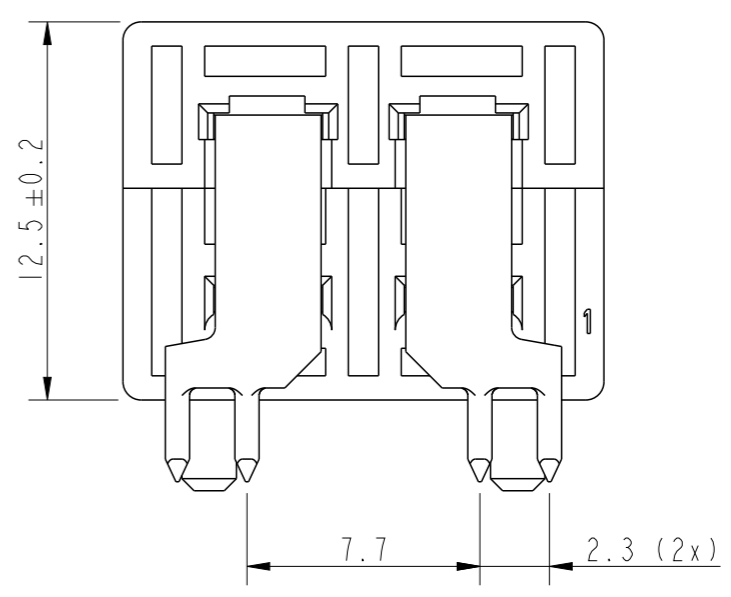
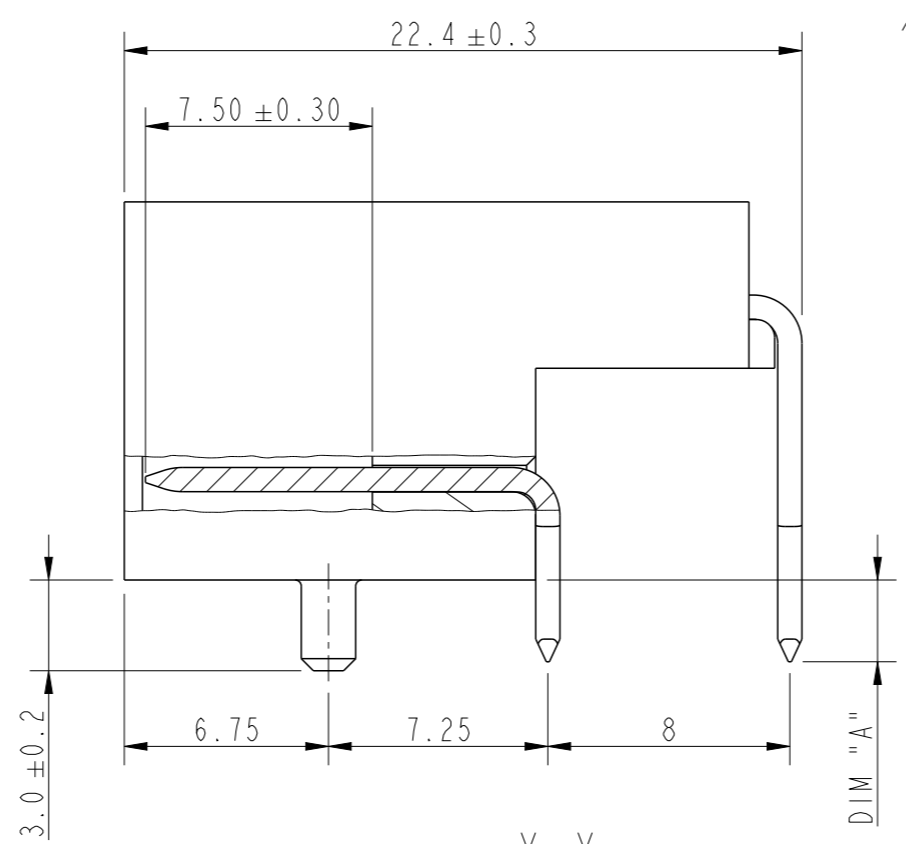
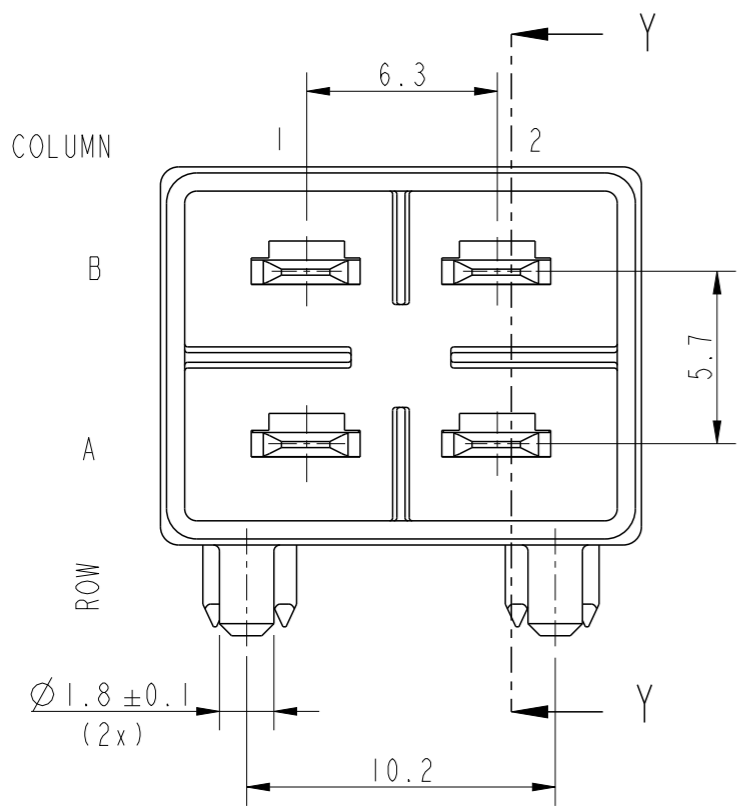


PRODUCT NUMBER
SEE TABLE ON THIS PAGE



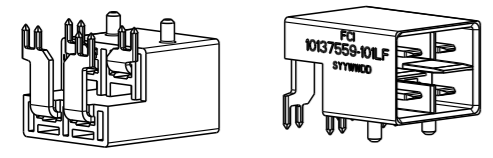
PART NO.	ROW	COLUMN		DIM "A±0.3"
		1	2	
10137559-101LF	B	X	X	2.7
	A	X	X	
10137559-102LF	B	X	-	2.7
	A	X	X	
10137559-103LF	B	-	X	2.7
	A	X	X	
10137559-104LF	B	X	X	3.85
	A	X	X	

'X' INDICATES CONTACT LOADING POSITION



Amphenol
FCi

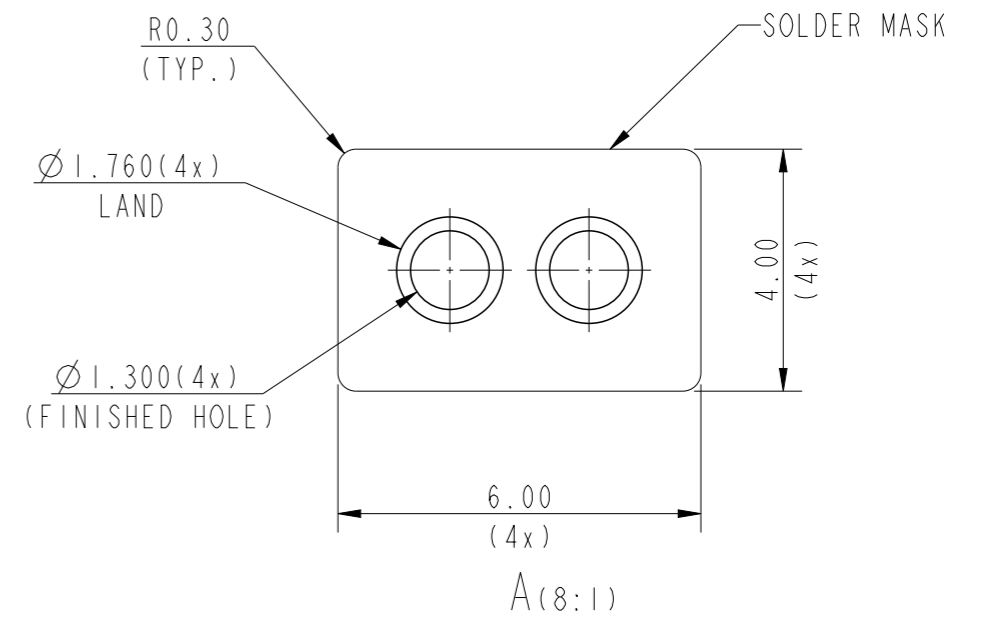
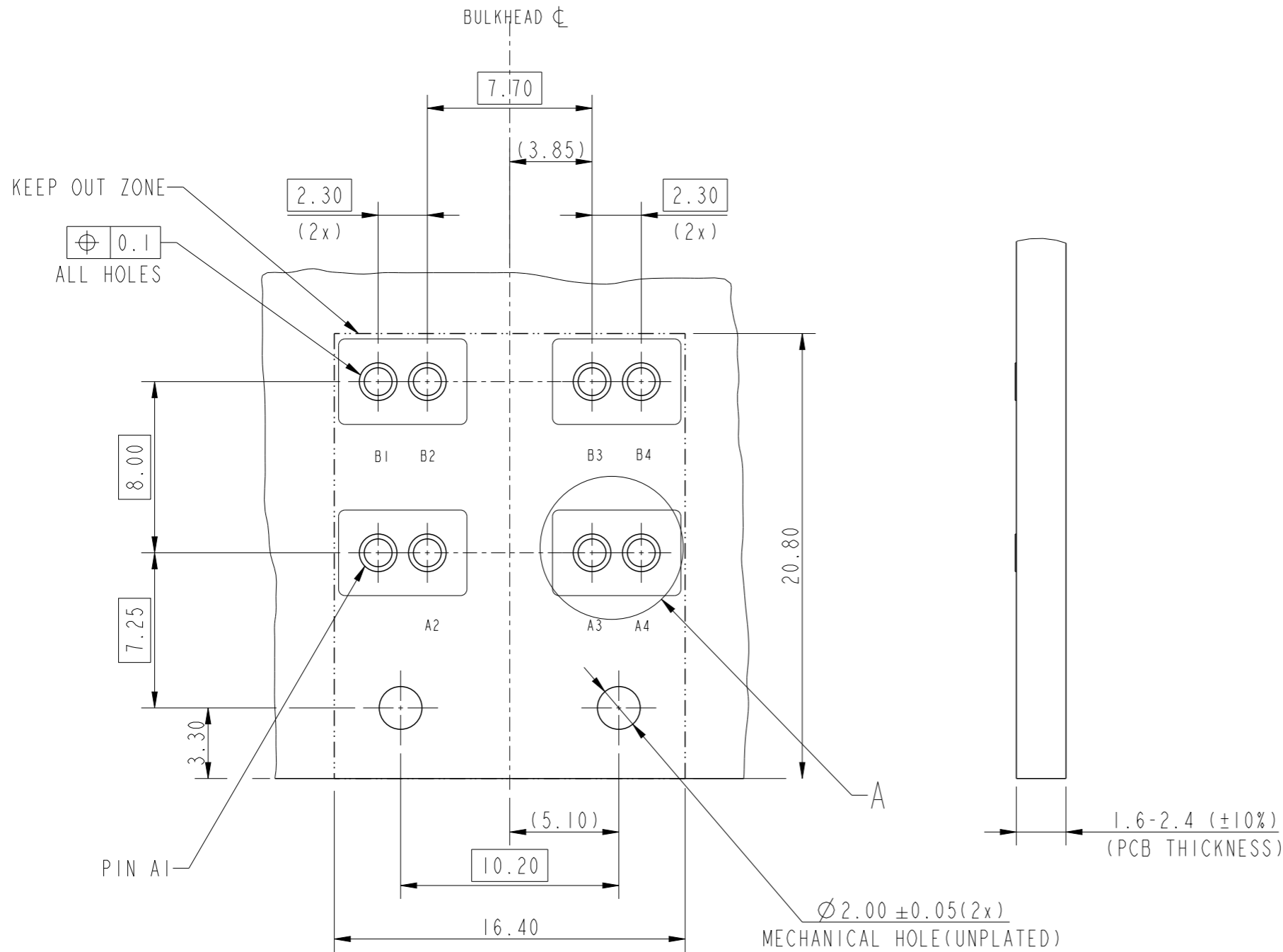
© 2020 Amphenol Corporation



spec ref	-	dr	Jibin John	2016/11/04	projection	mm	size	A3	scale	2:1	
tolerance std	ISO 406 ISO 1101	eng	Aloisius, Stali	2022/05/19			ecn no	ELX-I-44801-1			
TOLERANCES UNLESS OTHERWISE SPECIFIED		chr	-	-			product family	OCTIS	rel level	Released	
surface	linear	appr	Kuriakose, San	2022/05/19	POWER RIGHT ANGLE 2X2 BOARD CONNECTOR WITH PIP TERMINATION		dwg no	10137559		rev	H
ISO 1302	angular			cat. no.	-	Product - Customer Drw	sheet 1 of 4				

Creo File:ELX-WC-A3C.REV F.2020-12-21

VIEW FROM COMPONENT SIDE



NOTES:

- MATERIAL :
- RESIN - LCP, GLASS FILLED, FLAME RETARDANT ACC
FLAMMABILITY CLASSIFICATION - UL94-V0
- POWER CONTACTS - COPPER ALLOY
- PLATING :
- PURE TIN ON POWER CONTACTS
- PRODUCT SPECIFICATION: GS-12-1413 & GS-12-1339
- APPLICATION SPECIFICATION: GS-20-0454
- PACKAGING - TAPE & REEL
- UNDER PLATING FOR CONTACTS IS 1.27µm NICKEL.
- PRODUCT WILL WITHSTAND EXPOSURE TO 260° FOR 60 SECONDS IN A CONVECTION, INFRA RED OR VAPOUR PHASE REFLOW OVEN
- PRODUCT WHERE THE PARTNUMBER ENDS IN LF MEETS EUROPEAN DIRECTIVES AND OTHER COUNTRY REGULATIONS AS DESCRIBED IN GS-47-0004.

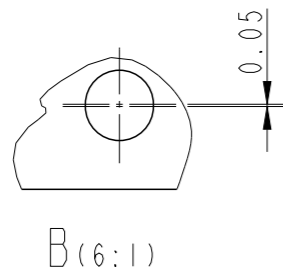
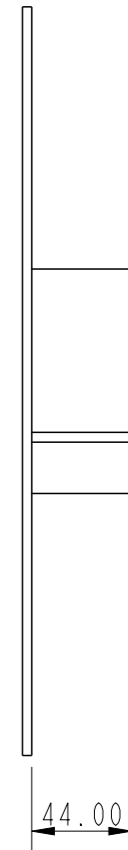
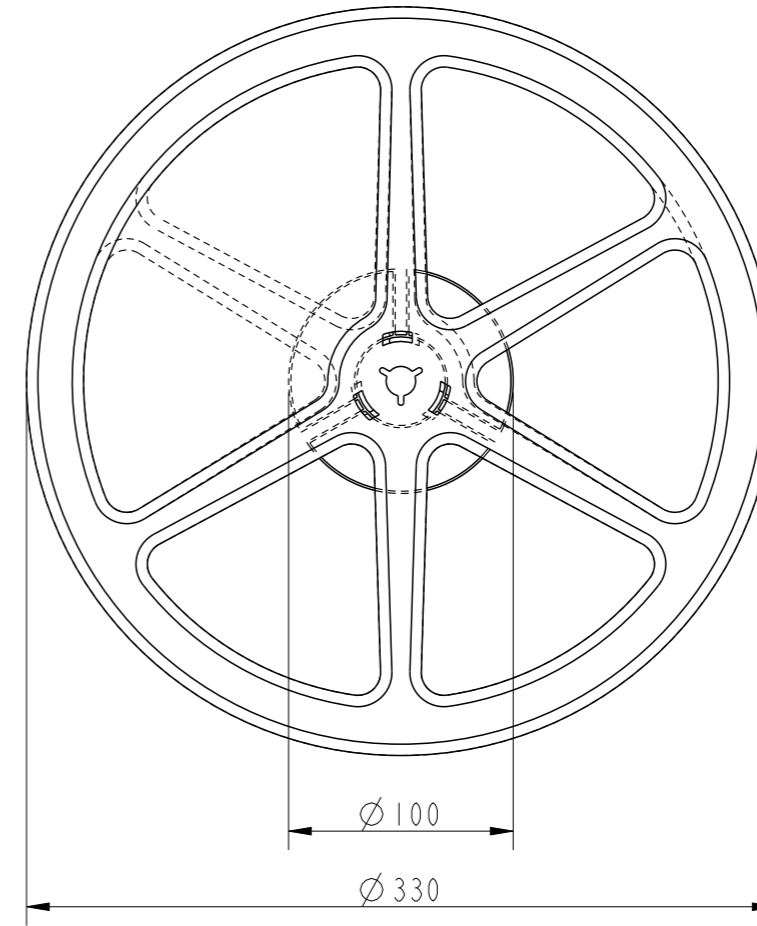
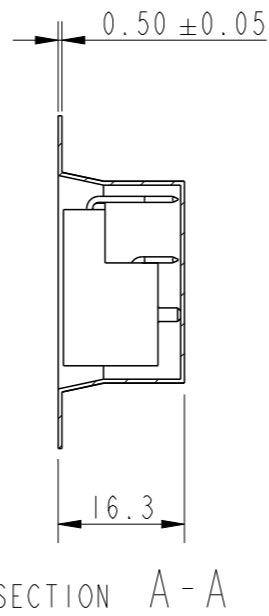
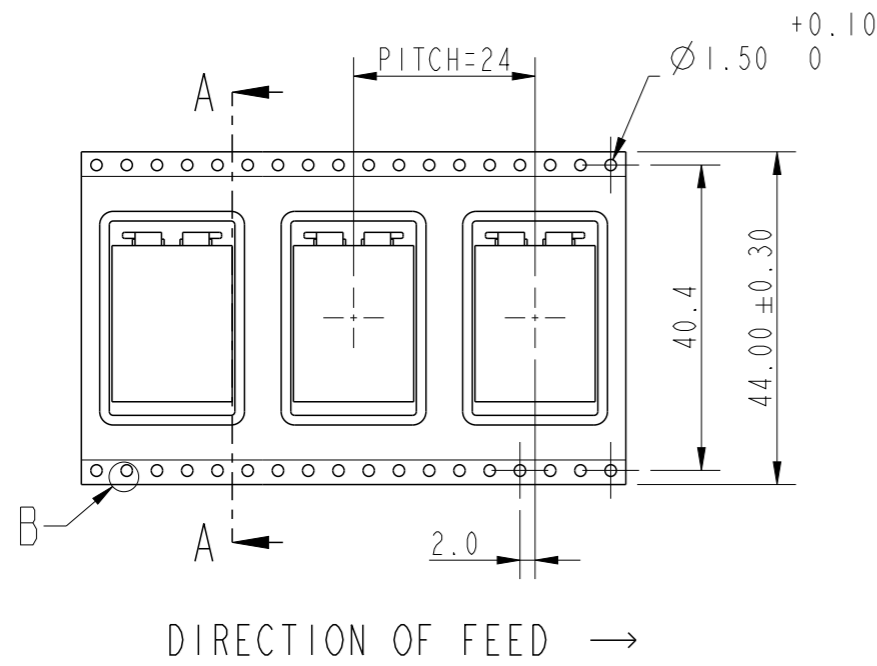
SCALE 4:1

NOTE: ABOVE PCB IS FOR P/N 10137559-101LF
FOR 10137559-102LF, REMOVE THE HOLES B3, B4
FOR 10137559-103LF, REMOVE THE HOLES B1, B2

POWER PTH DETAILS	
DRILLED HOLE	1.37-1.42mm
COPPER PLATING	25-50µm
TIN PLATING	0.8-1.2µm
FINISHED HOLE DIA	1.25-1.35mm

spec ref	-	dr	Jibin John	2016/11/04	projection	mm	size	A3	scale	2:1
tolerance std	ISO 406 ISO 1101	eng	Aloisius, Stali	2022/05/19			ecn no	ELX-I-44801-1	rel level	Released
TOLERANCES UNLESS OTHERWISE SPECIFIED		chr	-	apppr						
surface	linear	0.X	±0.3		POWER RIGHT ANGLE 2X2 BOARD CONNECTOR		dwg no	10137559	rev	H
		0.XX	±0.13		WITH PIP TERMINATION					
	angular	0°	±2°		cat. no.	-	Product - Customer Drw	sheet 2 of 4		

PACKAGING SPECIFICATION

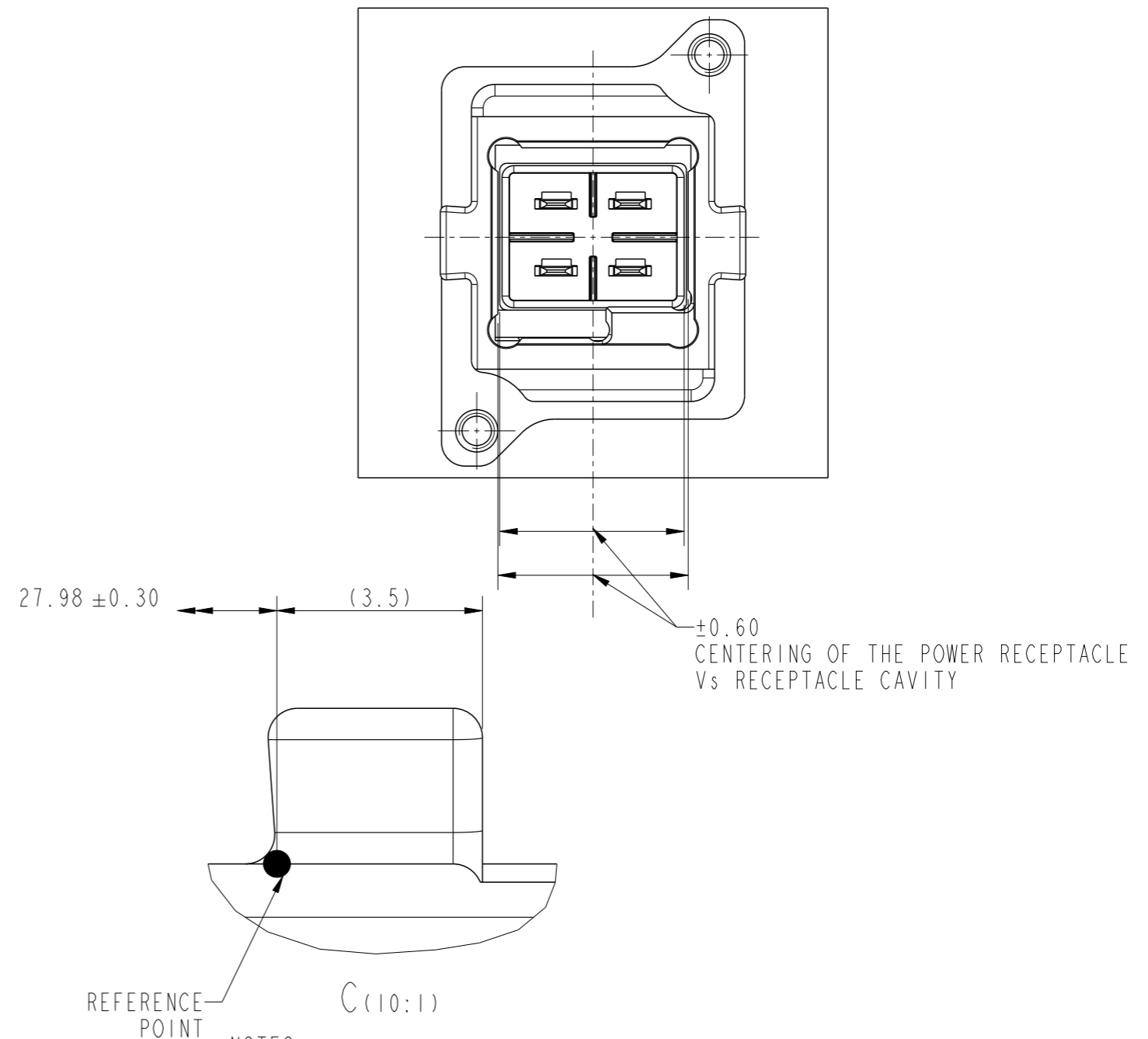
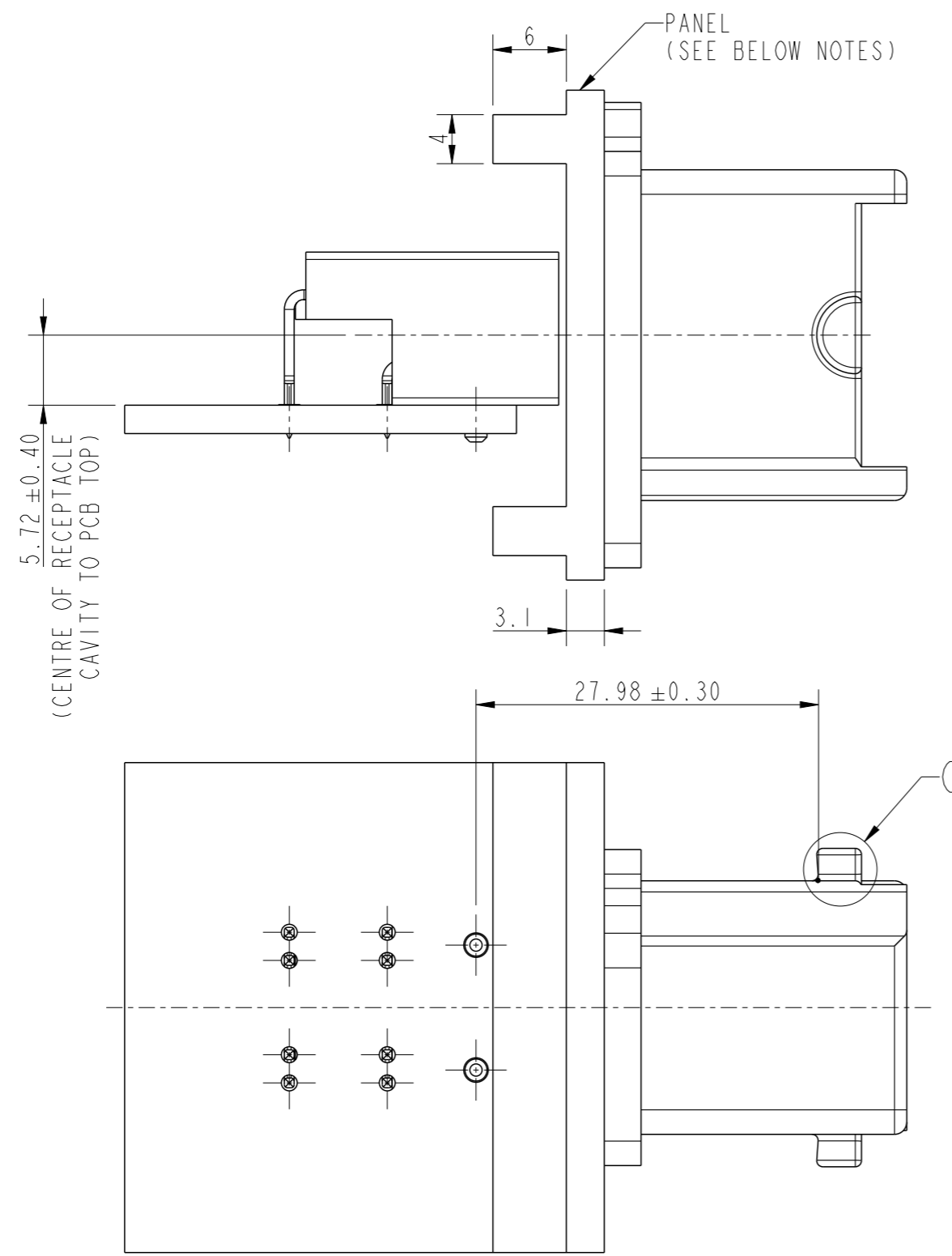


TAPE & REEL PACKING DETAILS

NOTES:

1. PACKAGING DETAILS AS PER EIA-481 STD.
2. PACKING SHOULD BE ANTISTATIC.
3. MATERIAL :
CARRIER TAPE : POLYSTYRENE
COVER TAPE : POLYSTYRENE

spec ref	-			dr	Jibin John	2016/11/04	projection	mm	size	A3	scale	2:1
tolerance std	TOLERANCES UNLESS OTHERWISE SPECIFIED			eng	Alosius, Stali	2022/05/19			ecn no		ELX-I-44801-1	
ISO 406				chr	-	-			rel level		Released	
ISO 1101				appr	Kuriakose, San	2022/05/19	product family		OCTIS			
surface		linear	0.X	±0.3	Amphenol FCI	POWER RIGHT ANGLE 2X2 BOARD CONNECTOR		dwg no 10137559	rev		H	
			0.XX	±0.13		WITH PIP TERMINATION						
ISO 1302	angular	0°	±2°	cat. no.		-	Product - Customer Drw		sheet 3 of 4			



- NOTES:
1. IF A SCREW TYPE BULKHEAD IS USED, THEN THE CASTED MOUNTING PANEL SHOULD HAVE ON ITS REAR SIDE AN INTEGRAL RECTANGULAR REINFORCED RIBS OF 6MM THICKNESS AND 4MM WIDTH ALONG THE MOUNTING SCREW PLANE AT THE TOP AND BOTTOM TO ACCOMODATE THE BLIND INTERNAL SCREW THREAD. IT IS NOT APPLICABLE FOR INTEGRATED BULKHEAD CASTED WITH MOUNTING PANEL
 2. IF THE BULKHEAD IS SCREW TYPE THEN THE SCREWS TO BE USED ARE M3; RECOMMENDED SCREW - M3X8MM. MATERIAL - STAINLESS STEEL
 3. BULKHEAD PART NO.-10141445-101LF

spec ref	-			dr	Jibin John	2016/11/04	projection	mm	size	A3	scale	2:1
tolerance std	TOLERANCES UNLESS OTHERWISE SPECIFIED			eng	Aloisius, Stali	2022/05/19			ecn no	ELX-I-44801-1		
ISO 406				chr	-	-	product family	rel level	Released			
ISO 1101				appr	Kuriakose, San	2022/05/19						
surface	linear	0.X	±0.3	Amphenol FCi	POWER RIGHT ANGLE 2X2 BOARD CONNECTOR			dwg no	10137559		rev	H
		0.XX	±0.13		WITH PIP TERMINATION							
ISO 1302	angular	0°	±2°		cat. no.	Product - Customer Drw			sheet 4 of 4			