

"High Frequency Ceramic Solutions"

2.45 GHz Antenna

P/N 2450AT18D0100

Detail Specification: 9/28/2012

Page 1 of 3

General Specifications

Part Number	2450AT18D0100	Input Power	2W max.
Frequency (MHz)	2400 - 2500	Impedance	50 Ω
Peak Gain	1.5 dBi typ. (XZ-total)	Reel Quantity	3,000
Average Gain	-1.0 dBi typ. (XZ-total)	Recommended Storage Conditions	+5 ~ +35 °C, Humidity 45~75%RH, 12 mos. Max
Return Loss	6.0 dB min.		
Operating Temperature	-40 to +85°C		

Part Number Explanation

P/N Suffix	Packing Style	Bulk	Suffix = S	eg. 2450AT18D0100S
		T & R	Suffix = E	eg. 2450AT18D0100E
	Termination style	100% Tin	Suffix = None	eg. 2450AT18D0100 (E or S)
	EVB p/n	2450AT18D0100-EB1SMA		

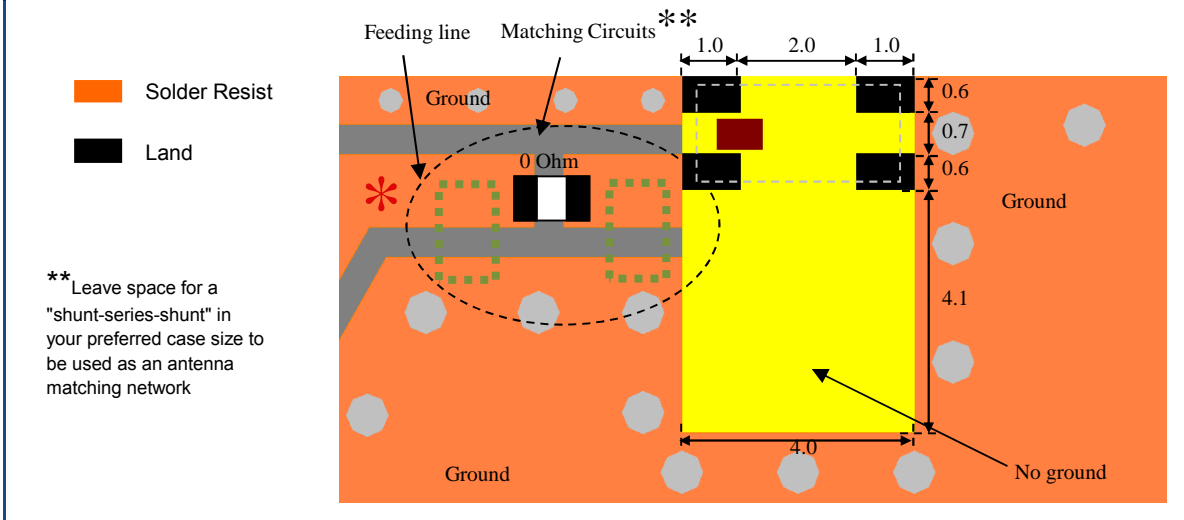
Mechanical Dimensions

	In	mm	Diagram	
L	0.126 \pm 0.008	3.20 \pm 0.20		
W	0.063 \pm 0.008	1.60 \pm 0.20		
T	0.047 \pm 0.008	1.20 \pm 0.20		
a	0.012 \pm .004/-0.008	0.30 \pm 0.1/-0.2		
b	0.020 \pm 0.008	0.50 \pm 0.20		

Mounting Considerations

Mount these devices with red mark facing up.

*Line width should be designed to provide 50 Ω impedance matching characteristics.



www.johansontechnology.com

4001 Calle Tecate • Camarillo, CA 93012 • TEL 805.389.1166 FAX 805.389.1821

2012 Johanson Technology, Inc. All Rights Reserved

"High Frequency Ceramic Solutions"

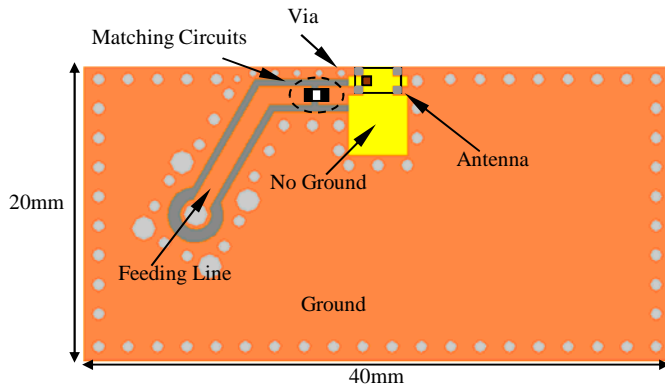
2.45 GHz Antenna

P/N 2450AT18D0100

Detail Specification: 04/04/12

Page 2 of 3

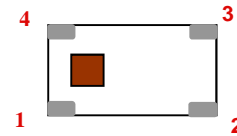
Typical Electrical Performance (T=25°C)



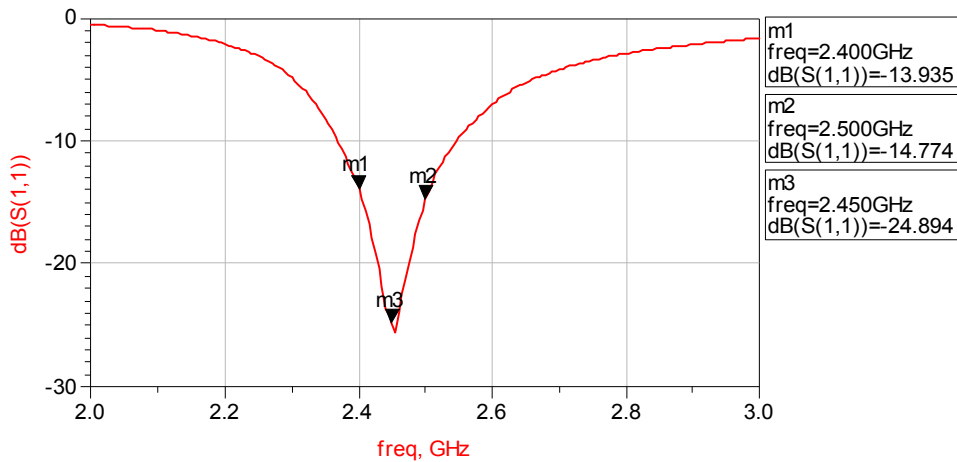
Orderable EVB p/n (comes with 1 female SMA connector mounted on the opposite side):

2450AT18D0100-EB1SMA

No.	Function
1	Feeding Point
2	GND
3	GND
4	GND



Typ Return Loss



Johanson Technology, Inc. reserves the right to make design changes without notice. Please confirm the specifications and delivery conditions when placing your order. All sales are subject to Johanson Technology, Inc. terms and conditions.



www.johansontechnology.com

4001 Calle Tecate • Camarillo, CA 93012 • TEL 805.389.1166 FAX 805.389.1821

2012 Johanson Technology, Inc. All Rights Reserved

"High Frequency Ceramic Solutions"

2.45 GHz Antenna

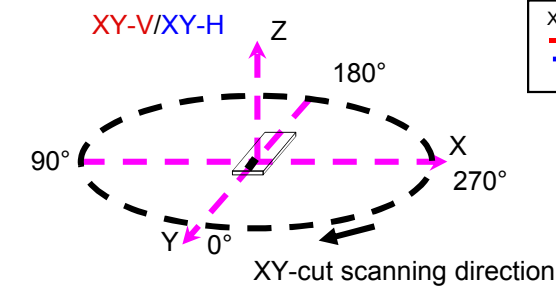
Detail Specification: 9/28/2012

P/N 2450AT18D0100

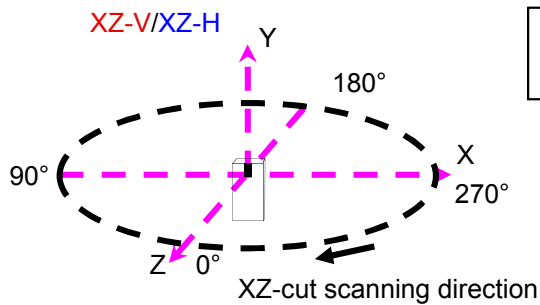
Page 3 of 3

Typical Electrical Performance (T=25°C)

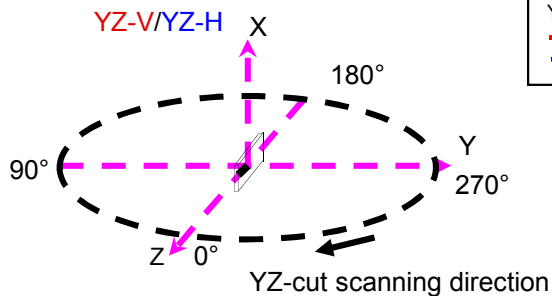
Typical Radiation Patterns



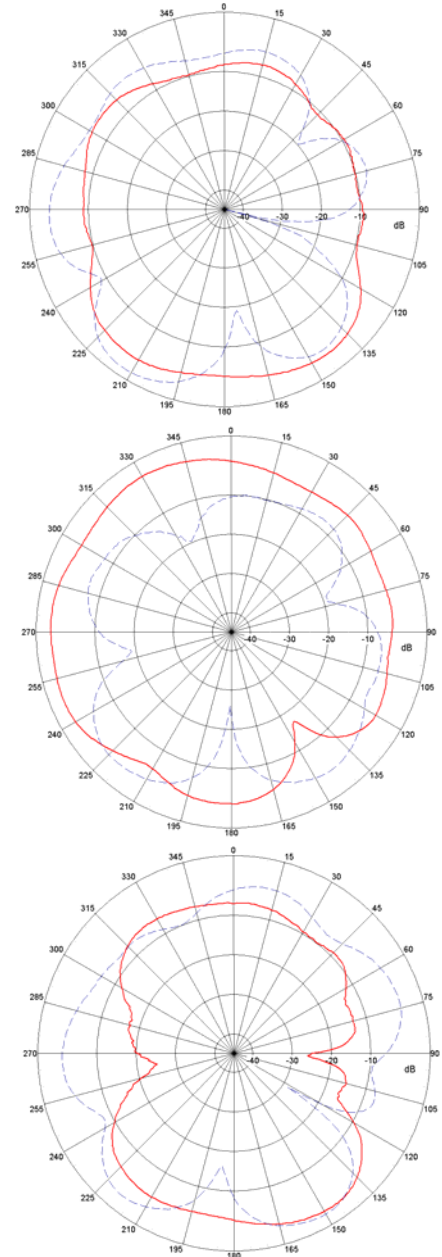
XY cut @2.45GHz
 — Vertical
 - - - Horizontal



XZ cut @2.45GHz
 — Vertical
 - - - Horizontal



YZ cut @2.45GHz
 — Vertical
 - - - Horizontal



Johanson Technology, Inc. reserves the right to make design changes without notice. Please confirm the specifications and delivery conditions when placing your order. All sales are subject to Johanson Technology, Inc. terms and conditions.



www.johansontechnology.com

4001 Calle Tecate • Camarillo, CA 93012 • TEL 805.389.1166 FAX 805.389.1821

2012 Johanson Technology, Inc. All Rights Reserved