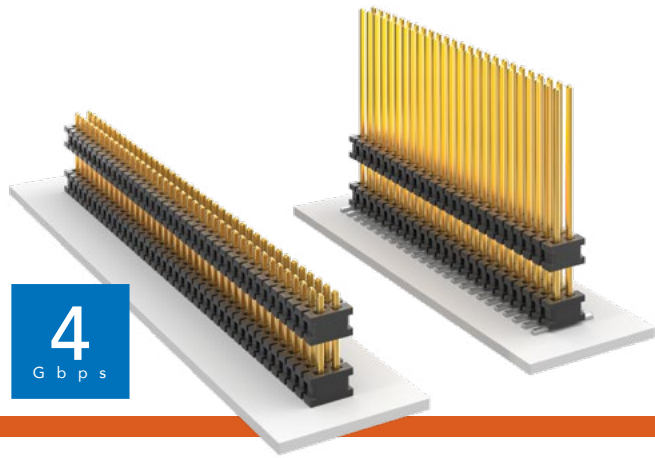


FLEX STACK

MICRO BOARD STACKER

(1.27 mm) .050" PITCH • FW SERIES



FW
Board Mates:
 CLP, FLE
Cable Mates:
 FFSD

SPECIFICATIONS

Insulator Material:
 Black Liquid Crystal Polymer
Terminal Material:
 Phosphor Bronze
Plating:
 Sn or Au over 50 μ" (1.27 μm) Ni
Operating Temp Range:
 -55 °C to +125 °C

PROCESSING

Lead-Free Solderable:
 Yes
SMT Lead Coplanarity:
 (0.10 mm) .004" max (02-30)
 (0.15 mm) .006" max (31-50)*
 *(.004" stencil solution may be available; contact IPG@samtec.com)

MATED HEIGHT

FW LEAD STYLE	CLP LEAD STYLE	MATED HEIGHT*
FW-XX-03-X-X-233-065	-02	8.13 mm) .329"
FW-XX-03-X-X-303-065		9.91 mm) .390"

*Processing conditions will affect mated height.

ALSO AVAILABLE

Smaller stack heights
 (MOQ Required)

Notes:
 For added mechanical stability, Samtec recommends mechanical board spacers be used in applications with gold or selective gold plated connectors. Contact ipg@samtec.com for more information.

This Series is non-standard, non-returnable.

FW	NO. OF PINS PER ROW	LEAD STYLE	PLATING OPTION	D	STACKER HEIGHT	POST HEIGHT	OPTION
----	---------------------	------------	----------------	---	----------------	-------------	--------

02 thru 50

Specify LEAD STYLE from chart

-F
 = Gold flash on post, Matte Tin on tail

-L
 = 10 μ" (0.25 μm) Gold on post, Matte Tin on tail

-G
 = 10 μ" (0.25 μm) Gold on post, Gold flash on tail

-"XXX"
 = Stacker Height (in inches)
 Example:
 -.250 = (6.35 mm) .250"

-"XXX"
 = Post Height (in inches)
 (1.65 mm) .065" minimum
 Example:
 -.065 = (1.65 mm) .065"

-ES
 = End Shroud (-075 post height only. Mate only with CLP) (5.46 mm) .215" to (15.49 mm) .610" stacker height only 9 pins/row min.

-EP
 = End Shroud with Guide Post (-075 post height only. Mate only with CLP) (5.46 mm) .215" to (15.49 mm) .610" stacker height only 9 pins/row min.

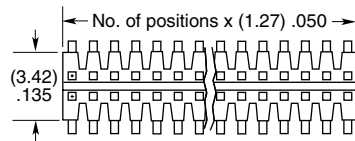
-A
 = Alignment Pin (3 positions min.) (5.46 mm) .215" to (15.75 mm) .620" stacker height only (SMT only)

-P
 = Pick & Place Pad (5 positions min.) (SMT only)

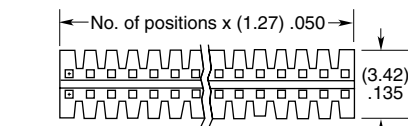
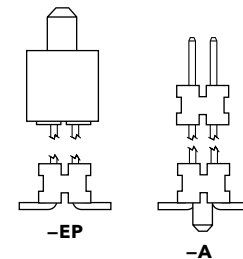
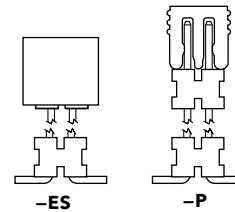
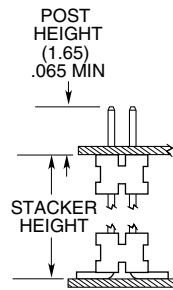
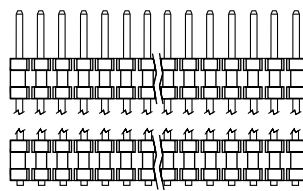
-TR
 = Tape & Reel (Max overall height = Post+Stacker Height+Pad+Alignment Pin = (17.78) .700") (SMT only)

-FR
 = Full Reel Tape & Reel (must order max. quantity per reel; contact Samtec for quantity breaks) (SMT only)

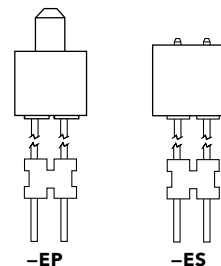
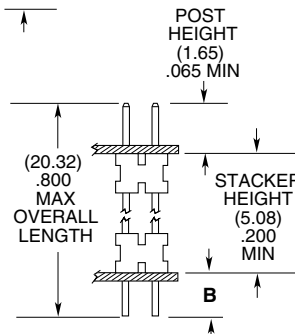
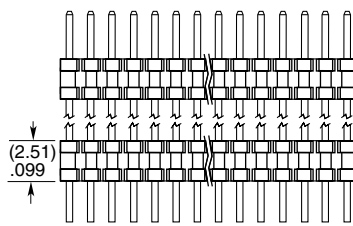
LEAD STYLE	STACKER HEIGHT	STACKER + POST
-03	(5.46) to (8.51) .215 to .335	(7.11) to (10.16) .280 to .400
-05	(8.64) to (15.49) .340 to .610	(10.29) to (17.15) .405 to .675



SURFACE MOUNT



THROUGH-HOLE



LEAD STYLE	TAIL (B)
-01	(1.14) .045
-02	(1.91) .075
-04	(2.29) .090

Mouser Electronics

Authorized Distributor

Click to View Pricing, Inventory, Delivery & Lifecycle Information:

Samtec:

[FW-30-05-F-D-445-075-EP-A](#) [FW-30-05-F-D-445-100-A](#) [FW-30-05-F-D-445-104-P-TR](#) [FW-30-05-F-D-465-150](#) [FW-30-05-F-D-501-075-A-P-TR](#) [FW-30-05-F-D-535-140](#) [FW-30-05-G-D-314-157-A-P-TR](#) [FW-30-05-G-D-370-100-P-TR](#) [FW-30-05-G-D-375-070-P-TR](#) [FW-30-05-G-D-384-100-P-TR](#) [FW-30-05-G-D-390-197](#) [FW-30-05-G-D-400-130-A](#) [FW-30-05-G-D-437-200-A-P-TR](#) [FW-30-05-G-D-445-090-A-P-TR](#) [FW-30-05-G-D-445-100-A](#) [FW-30-05-G-D-445-104-P-TR](#) [FW-30-05-G-D-450-100-A-P-TR](#) [FW-30-05-G-D-470-100](#) [FW-30-05-G-D-495-180](#) [FW-30-05-G-D-525-150-A](#) [FW-30-05-G-D-527-143-A-P-TR](#) [FW-30-05-L-D-260-165-P](#) [FW-30-05-L-D-340-085-A](#) [FW-30-05-L-D-350-075-ES-A](#) [FW-30-05-L-D-365-065](#) [FW-30-05-L-D-385-065-A-P-TR](#) [FW-30-05-L-D-410-138](#) [FW-30-05-L-D-430-160-A](#) [FW-30-05-L-D-437-123-A](#) [FW-30-05-L-D-445-075](#) [FW-30-05-L-D-557-118](#) [FW-32-02-F-D-267-133](#) [FW-32-02-F-D-411-075-EP](#) [FW-32-02-F-D-607-075](#) [FW-32-02-F-D-607-075-EP](#) [FW-32-02-F-D-646-075](#) [FW-32-03-F-D-267-133-A](#) [FW-32-03-G-D-305-065-A-P](#) [FW-32-03-L-D-100-150-P-TR](#) [FW-32-04-L-D-250-075](#) [FW-32-05-F-D-383-252-A](#) [FW-32-05-F-D-464-090](#) [FW-32-05-G-D-315-158-P](#) [FW-32-05-G-D-410-065](#) [FW-32-05-G-D-410-065-ES-A](#) [FW-32-05-G-D-500-065-P-TR](#) [FW-32-05-G-D-500-150-A-P-TR](#) [FW-32-05-L-D-484-137](#) [FW-32-05-L-D-580-075-ES](#) [FW-33-05-L-D-345-100](#) [FW-33-05-L-D-399-140](#) [FW-34-04-L-D-215-075-ES](#) [FW-34-05-G-D-600-075-EP](#) [FW-34-05-L-D-545-130](#) [FW-34-05-LM-D-555-100-A](#) [FW-35-03-F-D-215-157-A](#) [FW-35-03-G-D-200-200-P](#) [FW-35-03-G-D-300-065](#) [FW-35-03-H-D-170-160](#) [FW-35-03-L-D-215-150-P-TR](#) [FW-35-03-L-D-270-100](#) [FW-35-03-L-D-305-065-EP-A](#) [FW-35-03-L-D-305-065-EP-A-P](#) [FW-35-03-L-D-305-065-EP-A-P-TR](#) [FW-35-04-G-D-250-090](#) [FW-35-05-G-D-380-075-ES-A-TR](#) [FW-35-05-G-D-380-160-A-P-TR](#) [FW-35-05-G-D-410-160-A-P](#) [FW-35-05-G-D-500-065-P-TR](#) [FW-35-05-G-D-500-157-A-P-TR](#) [FW-35-05-G-D-524-075](#) [FW-35-05-H-D-310-150-P-TR](#) [FW-35-05-H-D-340-160-P-TR](#) [FW-35-05-L-D-330-120](#) [FW-35-05-L-D-345-065-A-P](#) [FW-35-05-L-D-410-170-A](#) [FW-35-05-L-D-420-170-A](#) [FW-35-05-L-D-510-150-A](#) [FW-36-03-G-D-266-075-A-P-TR](#) [FW-36-05-F-D-305-100](#) [FW-37-03-G-D-215-150-A](#) [FW-39-03-F-D-250-150-A](#) [FW-39-04-F-D-250-160](#) [FW-39-04-G-D-610-100](#) [FW-39-05-G-D-510-165-A-P-TR](#) [FW-40-01-L-D-690-065](#) [FW-40-02-G-D-215-060](#) [FW-40-02-G-D-217-133](#) [FW-40-02-G-D-225-145](#) [FW-40-02-G-D-335-075](#) [FW-40-02-G-D-398-075](#) [FW-40-02-G-D-530-075](#) [FW-40-02-L-D-425-150](#) [FW-40-02-L-D-590-120](#) [FW-40-03-F-D-303-065](#) [FW-40-03-G-D-163-065](#) [FW-40-03-G-D-205-120-P](#) [FW-40-03-G-D-241-125-A-P-TR](#) [FW-40-03-G-D-241-125-A-TR](#) [FW-40-03-G-D-300-100](#)