

IEC Connector C15 for hot conditions 120°C, Rewireable, Angled



4784



**Description**

- Cord Connectors (rewireable):  
Screw-on mounting
- 1 Function:

- Connector, Pin temperature 120 °C, Protection class I
- Cable

**Approvals**

- VDE Certificate Number: 40031778
- UL File Number: E96454
- CSA File Number: 56242

**References**

Substitute for type [8111](#); [8943.LW](#)

**Weblinks**

[pdf-datasheet](#), [html-datasheet](#), [General Product Information](#), [Approvals](#), [CE declaration of conformity](#), [RoHS](#), [CHINA-RoHS](#), [REACH](#), [Mating Connectors](#), [e-Shop](#), [SCHURTER-Stock-Check](#), [Distributor-Stock-Check](#), [CAD-Drawings](#), [Accessories](#), [Detailed request for product](#)

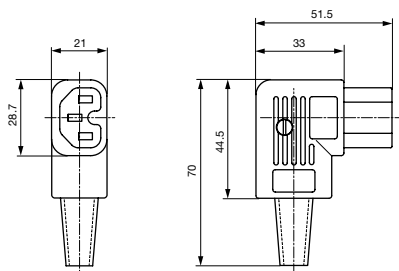
**Technical Data**

Ratings IEC	10 A / 250 VAC; 50 Hz
Ratings UL/CSA	15 A / 250 VAC; 60 Hz
Dielectric Strength	> 2 kVAC between L-N > 2 kVAC between L/N-PE (1 min/50 Hz)
Allowable Operation Temp.	-25 °C to 120 °C
Protection Class	Suitable for appliances with protection class I acc. to IEC 61140
Terminal	Cable
Material: Housing	Thermoplastic, black, UL 94V-0

Connector	C15 acc. to IEC/EN 60320-1, UL 498, CSA C22.2 no. 42 (for hot conditions) pin-temperature 120 °C, 10A, Protection Class I
-----------	---

**Dimensions**

4784



**All Variants**

Color	Max. cable diameter	Max. wire size	Order Number
black	8.5 mm	3 x 1 mm <sup>2</sup> / 3 x 18 AWG	<a href="#">4784.0000</a>
black	10 mm	3 x 2.1 mm <sup>2</sup> / 3 x 14 AWG	<a href="#">4784.0100</a>

Most Popular.

Availability for all products can be searched real-time: <http://www.schurter.com/en/Stock-Check/Stock-Check-SCHURTER>

Max. torque for screws: Terminals: 0.5 Nm, Cable clamps: 0.3 Nm, Cover: 0.3 Nm

Packaging unit 100 Pcs

## Mating Inlets/Plugs

## Category / Description

[Appliance Inlet Overview complete](#)

IEC Appliance Inlet C14, Screw-on Mounting, Front or Rear Side, Solder or Quick-connect Terminal	6100-3
IEC Appliance Inlet C14, Snap-in Mounting, Front Side, Solder or Quick-connect Terminal	6100-4
IEC Appliance Inlet C18, Screw-on Mounting, Front or Rear Side, Solder or Quick-connect Terminal	6102-3
IEC Appliance Inlet C18, Snap-in Mounting, Front Side, Solder or Quick-connect Terminal	6102-5
IEC Appliance Inlet C14, mates to Felcom	6150

[Appliance Inlet further types to 4784](#) ...

[Distribution Unit Overview complete](#)

Distribution Unit for Snap-in Mounting with 1 IEC Appliance Inlet C14 and 1 Appliance Outlet F	0712
Distribution Unit with 1 IEC Appliance Inlet C14 and 2 Appliance Outlets F, Shuttered	4741
Distribution Unit with 1 IEC Appliance Inlet C14 and 4 Appliance Outlets F	4747
Distribution Unit with 1 IEC Appliance Inlet C14 or Power Cord, 5 or 6 IEC Appliance Outlets F and Extra Components	4740
EMC Power Strip with Line Filter	FLBB

[Distribution Unit further types to 4784](#)

[Plug Overview complete](#)

IEC Plug E, Cord Connector (Rewireable), Straight, max. cable Diameter 8.5 mm	4732
IEC Plug E, Cord Connector (Rewireable), Straight, max. Cable Diameter 10 mm	4735
IEC Plug E, Cord Connector (Rewireable), Straight	9009
IEC Plug E, Cord Connector (Rewireable), Angled, max. Cable Diameter 8.5 mm	4733
IEC Plug E, Cord Connector (Rewireable), Angled, max. Cable Diameter 10 mm	4736

[Plug further types to 4784](#) ...

[Power Entry Module Overview complete](#)

IEC Appliance Inlet C14 or C18 with Line Switch 1- or 2-pole	DC11
IEC Appliance Inlet C14 with Line Switch 1-pole	KEB1
IEC Appliance Inlet C14 with Line Switch 2-pole	KEB2
IEC Appliance Inlet C14 with Line Switch 2-pole	DC21
IEC Appliance Inlet C14 with Line Switch 2-pole, Fuseholder 1- or 2-pole	DD11

[Power Entry Module further types to 4784](#) ...

[Power Entry Module with line filter Overview complete](#)

IEC Appliance Inlet C14 with Filter, Line Switch 1-pole	KFB1
IEC Appliance Inlet C14 with Filter, Line Switch 2-pole	KFB2
IEC Appliance Inlet C14 with Filter, Line Switch 1- or 2-pole, Front or Rear Side Mounting	DC12
IEC Appliance Inlet C14 with Filter, Line Switch 1- or 2-pole, PCB Mounting	DC22
IEC Appliance Inlet C14 with Filter, Fuseholder 1- or 2-pole, Line Switch 2-pole	DD12

[Power Entry Module with line filter further types to 4784](#) ...