

# High Current Toroidal Inductors

## Vertical PCB Mounting

### Key Features

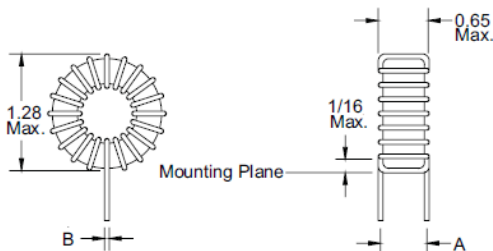
- Vertical PC Mounting for Board Layout Optimization.
- Wide Range Of Inductance and Current ratings.
- Distributed Air Gap For High Energy Storage.
- High Efficiency Reduced Core Loss.
- Self-Shielding For Low Magnetic Radiation.
- High Current Carrying Capability.

### Applications

- SMPS Energy Storage Inductors.
- EMI/RFI Filtering Inductors.
- DC-DC Converter Chokes.

### Notes

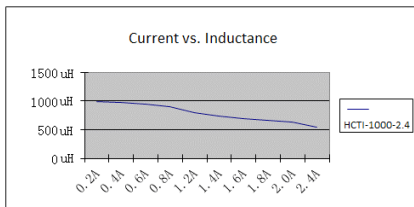
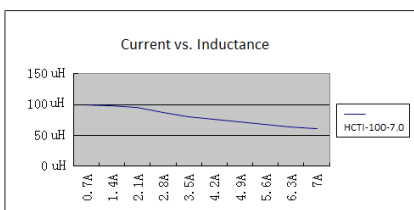
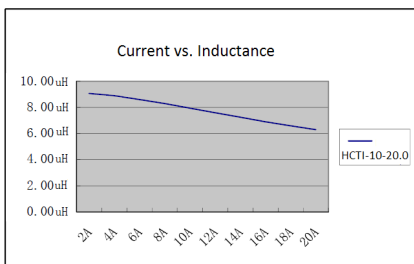
- (1) Dimensions are in inches.
- (2) Current causing 30°C max temperature rise.
- (3) Operating Temperature Range of -55 to +105°C.
- (4) Leads tinned to within 1/16 of an inch above Mounting Plane.
- (5) Lead Length of 0.50 inches



### Electro-Mechanical Characteristics

| Part Number   | L (u H) ±15% @ 1KHz | L(u H) ±15% @ I-rated | DC Resistance Ω MAX | I-rated DC Current Amps (2) | Dimension A (inches) Nominal | Dimension B (inches) Nominal |
|---------------|---------------------|-----------------------|---------------------|-----------------------------|------------------------------|------------------------------|
| HCTI-10-20.0  | 10                  | 6.7                   | 0.005               | 20.0                        | 0.56                         | 0.066                        |
| HCTI-12-19.1  | 12                  | 7.8                   | 0.005               | 19.1                        | 0.56                         | 0.066                        |
| HCTI-15-18.0  | 15                  | 9.5                   | 0.006               | 18.0                        | 0.56                         | 0.066                        |
| HCTI-18-17.2  | 18                  | 11.1                  | 0.006               | 17.2                        | 0.56                         | 0.066                        |
| HCTI-22-16.4  | 22                  | 13.2                  | 0.007               | 16.4                        | 0.56                         | 0.066                        |
| HCTI-27-15.6  | 27                  | 15.7                  | 0.008               | 15.6                        | 0.56                         | 0.066                        |
| HCTI-33-11.7  | 33                  | 21.3                  | 0.013               | 11.7                        | 0.53                         | 0.053                        |
| HCTI-39-11.2  | 39                  | 24.7                  | 0.014               | 11.2                        | 0.53                         | 0.053                        |
| HCTI-47-10.7  | 47                  | 29.0                  | 0.016               | 10.7                        | 0.53                         | 0.053                        |
| HCTI-56-10.2  | 56                  | 33.7                  | 0.017               | 10.2                        | 0.53                         | 0.053                        |
| HCTI-68-7.7   | 68                  | 45.2                  | 0.030               | 7.70                        | 0.52                         | 0.042                        |
| HCTI-100-7.0  | 100                 | 63.1                  | 0.037               | 7.00                        | 0.52                         | 0.042                        |
| HCTI-120-6.7  | 120                 | 73.9                  | 0.040               | 6.70                        | 0.52                         | 0.042                        |
| HCTI-150-5.0  | 150                 | 101.4                 | 0.071               | 5.00                        | 0.51                         | 0.034                        |
| HCTI-180-4.8  | 180                 | 118.9                 | 0.078               | 4.80                        | 0.51                         | 0.034                        |
| HCTI-220-5.8  | 220                 | 123.8                 | 0.054               | 5.80                        | 0.56                         | 0.042                        |
| HCTI-270-5.5  | 270                 | 147.2                 | 0.060               | 5.50                        | 0.56                         | 0.042                        |
| HCTI-330-5.2  | 330                 | 174.1                 | 0.067               | 5.20                        | 0.56                         | 0.042                        |
| HCTI-390-5.0  | 390                 | 200.2                 | 0.072               | 5.00                        | 0.56                         | 0.042                        |
| HCTI-470-3.8  | 470                 | 271.4                 | 0.130               | 3.80                        | 0.54                         | 0.034                        |
| HCTI-560-3.6  | 560                 | 314.8                 | 0.140               | 3.60                        | 0.54                         | 0.034                        |
| HCTI-680-3.4  | 680                 | 370.7                 | 0.150               | 3.40                        | 0.54                         | 0.034                        |
| HCTI-820-2.6  | 820                 | 500.9                 | 0.270               | 2.60                        | 0.53                         | 0.027                        |
| HCTI-1000-2.4 | 1000                | 593.6                 | 0.300               | 2.40                        | 0.53                         | 0.027                        |

Custom versions available upon request.



500 Bayview Avenue  
Inwood, NY 11096 USA  
sales@signaltransformer.com  
techhelp@signaltransformer.com

Tel +1 516.239.5777  
Fax +1 516.239.7208  
Toll Free +1 866.239.5777  
signaltransformer.com

# Mouser Electronics

Authorized Distributor

Click to View Pricing, Inventory, Delivery & Lifecycle Information:

Bel:

[SMD-HCTI-KIT](#)