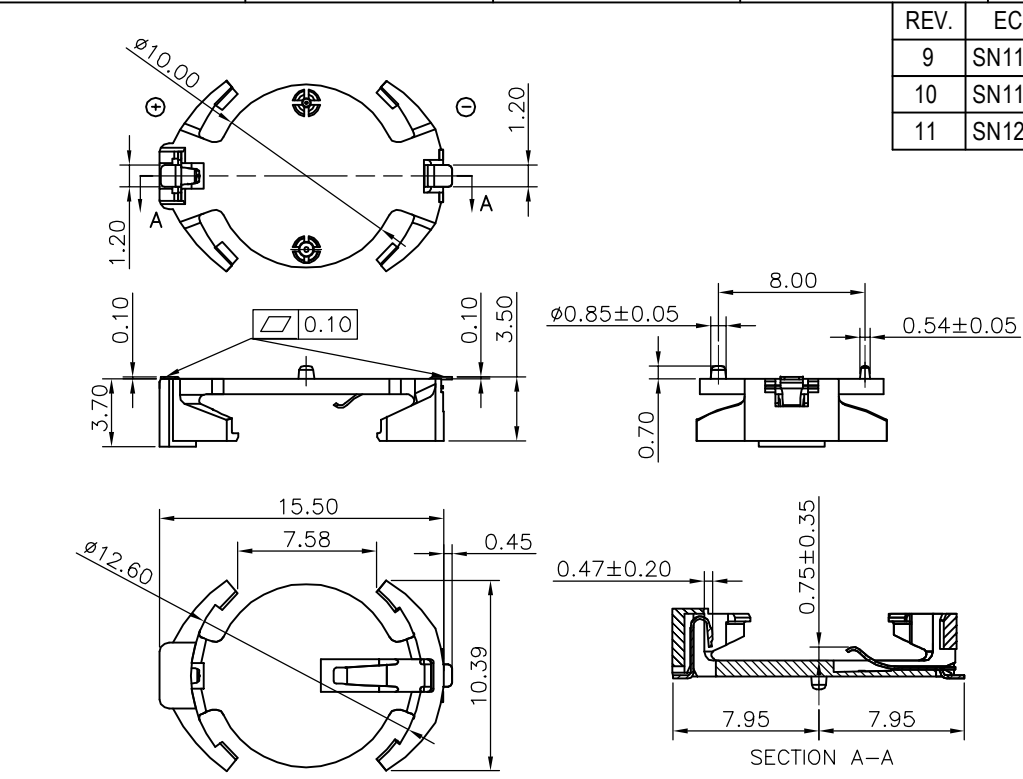
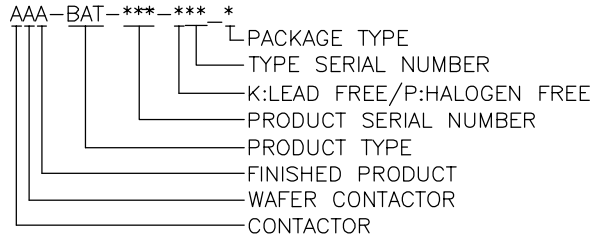


REV.	ECR/N NO./DESCRIPTION	DATE	DRAWN	CHECKED	APPROVE
9	SN11037	03/15'11	Woden	Vito.Li	Barney
10	SN11296	12/29'11	SKY	Vito.Li	Barney
11	SN12221	10/11'12	SKY	Vito.Li	Barney

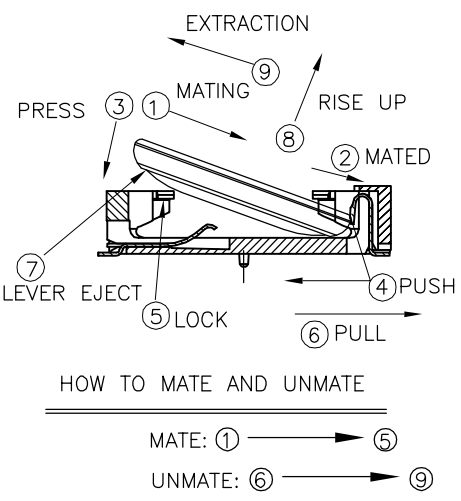
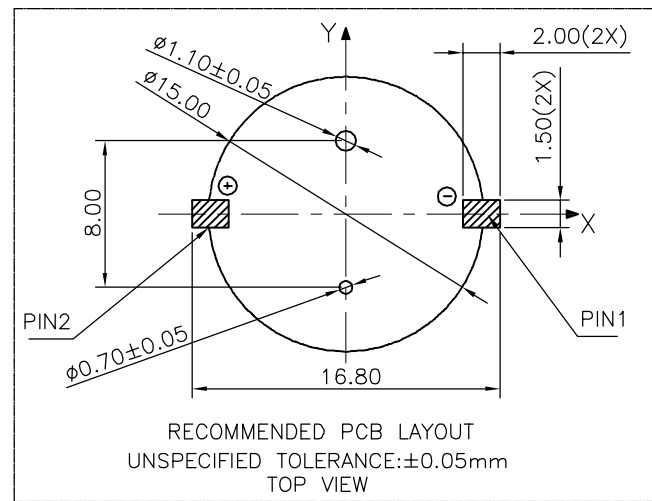


NOTES:
 1.MATERIAL:
 1.1 CONTACT: PHOSPHOR BRANZE.
 1.2 HOUSING: SEE TABLE.
 2.FINISH:
 2.1 CONTACT AREA: GOLD FLASH 1u" MIN. NICKEL 50 u" MIN.
 2.2 SOLDER AREA: MATTE TIN 80~150u". NICKEL 50 u" MIN.
 3.RoHS COMPLIANT.
 HF COMPLIANT.
 4.MECHANICAL PERFORMANCE DURABILITY: 25 CYCLES.
 ELECTRICAL PERFORMANCE
 LLCR:30 mOHMS MAX\WITHSTANDING VOLTAGE:1000 AC FOR 1 MINUTE\
 INSULATION RESISTANCE:1000 MOHMS MIN
 5.IR REFLOW TEMPERATURE:250°C±10°C FOR 10 SECONDS MAX.
 6.PRODUCT NUMBER NOTE



TABLE

NO.	PART NO.	DESCRIPTION
4.	AAA-BAT-046-P03	PA9T,UL94-HB,BLACK
3.	AAA-BAT-046-P02	PA9T,UL94-HB,WHITE
2.	AAA-BAT-046-K03	PA9T,UL94-HB,BLACK
1.	AAA-BAT-046-K01	LCP,UL94V-0,WHITE



GENERAL TOLERANCES UNLESS SPECIFIED		PART NO.	LOTES
X± 0.35	X.°± 3°	SEE TABLE	
.XX ± 0.25	.X.°± 2°	APPROVED BY	TITLE
.XXX ± 0.15	.XX.°± 1°	Gear 12/26'07	BATTERY HOLDER FOR CR1220
CUSTOMER DRAWING		CHECKED BY	DWG NO.
		Kaka 12/26'07	AP-AAA-BAT-046
SIZE	UNITS	DRAWN BY	SHEET
A4	MM [INCH]	SUN 12/26'07	1 / 2
			SCALE
			5 : 2
			REV
			11

