

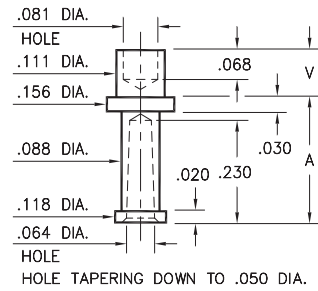
MALE PCB PINS

SOLDER TERMINALS VARIOUS TYPES

2709

2709-X-07-XX-00-00-07-0

Swage mount in .116 hole

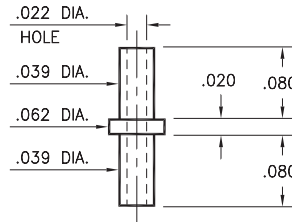


| Basic Part Number | Board Thickness | Length V | Length A |
|-------------------|-----------------|----------|----------|
| 2709-2 | .062 | .109 | .281 |
| 2709-3 | .094 | .141 | .250 |

2115

2115-2-00-XX-00-00-07-0

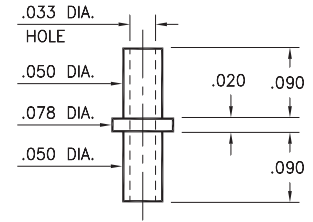
Swage mount in .043 hole
For a .062 thick board



2326

2326-2-00-XX-00-00-07-0

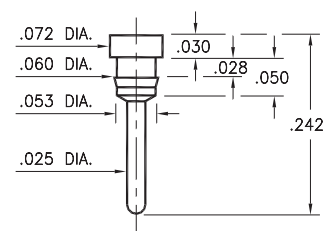
Swage mount in .055 hole
For a .062 thick board



8831

8831-0-00-XX-00-00-03-0

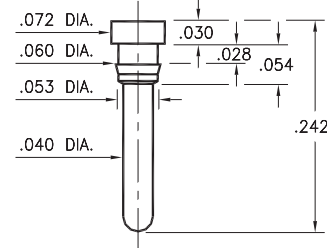
Press-fit in .057 mounting hole



8835

8835-0-00-XX-00-00-03-0

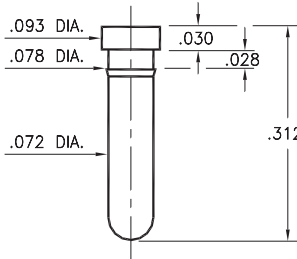
Press-fit in .057 mounting hole



8836

8836-0-00-XX-00-00-03-0

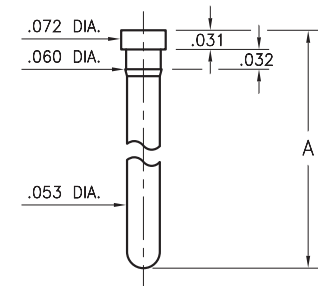
Press-fit in .075 mounting hole



0912/7912

0912-0-00-XX-00-00-03-0

Press-fit in .057 mounting hole

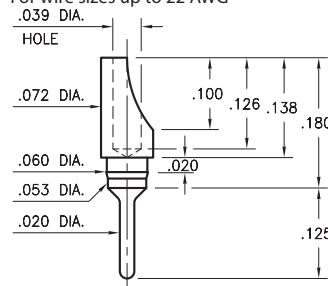


| Basic Part Number | Pin Length A |
|-------------------|--------------|
| 0912-0 | .313 |
| 7912-0 | .510 |

3080

3080-0-01-XX-00-00-03-0

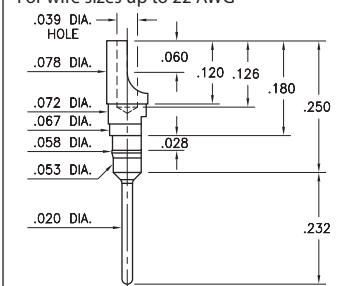
Press-fit in .057 mounting hole
For wire sizes up to 22 AWG



3180

3180-2-01-XX-00-00-03-0

Press-fit in .055 mounting hole
For wire sizes up to 22 AWG



SPECIFICATIONS:

Pin Material: Brass Alloy 360, 1/2 Hard
(Swage pins are annealed)

Dimensions: Inches

Tolerances On: Lengths: ±.005
Diameters: ±.002
Angles: ± 2°



ORDER CODE: XXXX - X - XX - XX - 00 - 00 - XX - 0

BASIC PART #

SPECIFY PIN FINISH:

- 01 200 μ" TIN/LEAD OVER NICKEL
- ◆ 80 200 μ" TIN OVER NICKEL (RoHS)
- ◆ 44 300 μ" SILVER OVER COPPER (RoHS)
- 50 300 μ" ELECTRO-SOLDER (60/40 SnPb)



Mouser Electronics

Authorized Distributor

Click to View Pricing, Inventory, Delivery & Lifecycle Information:

Mill-Max:

[8835-0-00-01-00-00-03-0](#) [2709-3-07-01-00-00-07-0](#) [2709-3-07-50-00-00-07-0](#) [2709-2-07-01-00-00-07-0](#) [2709-2-07-50-00-00-07-0](#) [2326-2-00-01-00-00-07-0](#) [2326-2-00-50-00-00-07-0](#) [2115-2-00-01-00-00-07-0](#) [2115-2-00-50-00-00-07-0](#)
[8831-0-00-80-00-00-03-0](#) [2709-3-07-80-00-00-07-0](#) [2709-2-07-80-00-00-07-0](#) [2115-2-00-44-00-00-07-0](#) [2326-2-00-44-00-00-07-0](#) [2709-2-07-44-00-00-07-0](#) [2709-3-07-44-00-00-07-0](#) [8602-1-00-44-00-00-07-0](#) [8835-0-00-00-00-00-03-0](#)
[2326-2-00-00-00-00-07-0](#) [2709-2-07-00-00-00-07-0](#) [8831-0-00-00-00-00-03-0](#) [8836-0-00-00-00-00-03-0](#) [2115-2-00-00-00-00-07-0](#) [8602-1-00-00-00-00-07-0](#) [2709-3-07-00-00-00-07-0](#)