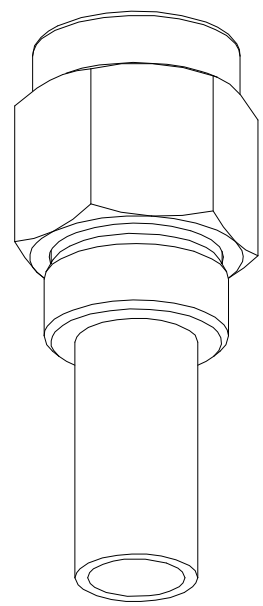
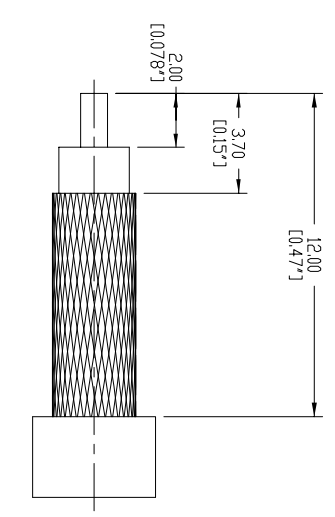


132113RP-10	DRAWING NO.	REV	DESCRIPTION	DATE	ECD	APPR
THIRD ANGLE PROJ		A	RELEASE TO MFG.	24-Mar-11	--	HR

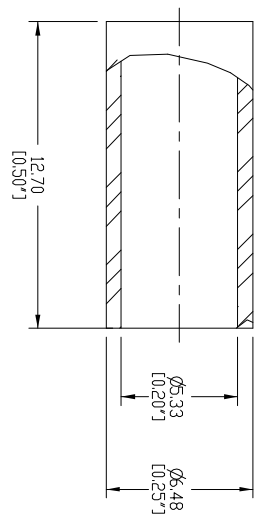
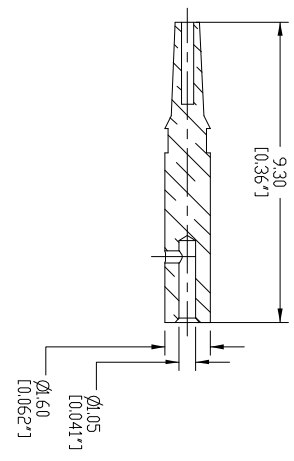
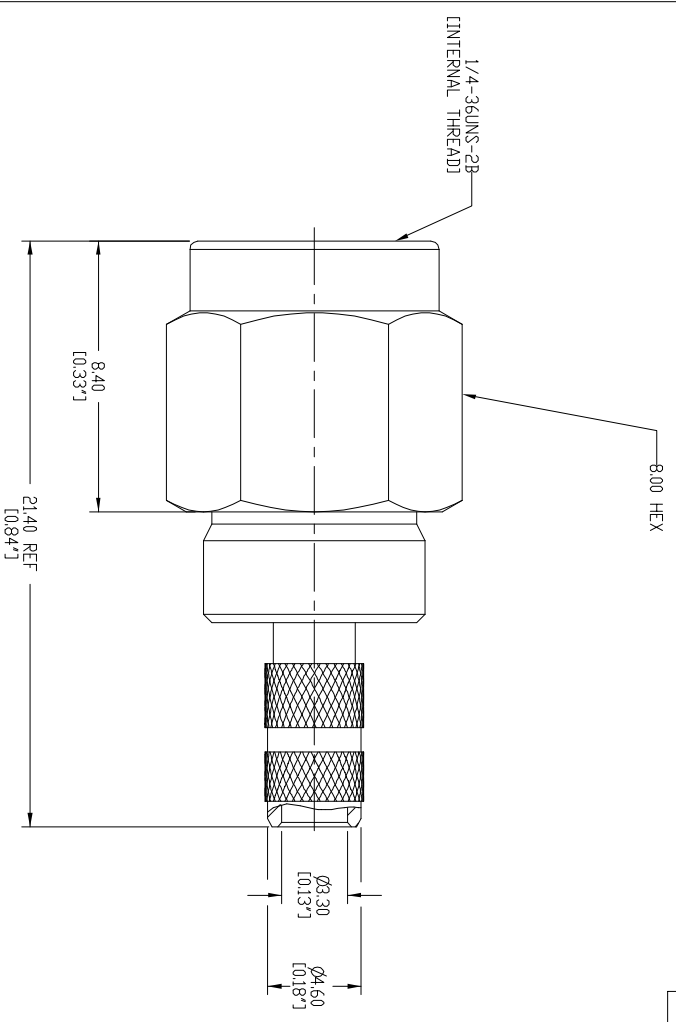
REVISIONS

- NOTES:
1. CRIMPED FERRULE HEX CRIMP SIZE 0.213"
  2. CONTACT PIN TO SOLDER
  3. CONTACT RETENTION: 6 LBS.MINIMUM AXIAL FORCE (CAPTIVATED CONTACTS)



RECOMMENDED  
CABLE STRIPPING DIM'S

SCALE 5.000



GASKET	SILICONE	RED
FERRULE	COPPER	GOLD
COUPLING NUT	BRASS	GOLD
CONTACT PIN	BER.COPPER	GOLD
INSULATOR	TEFLON	NATURAL
BODY	BRASS	GOLD
DESCRIPTION	MATERIAL	FINISH

UNLESS OTHERWISE SPECIFIED, DIMENSIONS ARE IN INCHES AND TOLERANCES ARE:  
 2 PLACE DECIMAL 3 PLACE DECIMAL ANGLES  
 ±0.015 (0.381 mm) ±0.005 (0.127 mm) ± 1°

NOTICE - These drawings, specifications, or other data (1) are, and remain the property of Amphenol Corp. (2) must be returned upon request and (3) are confidential and not to be disclosed to any person other than those to whom they are given by Amphenol Corp. The finishing of these drawings, specifications, or other data is subject to change without notice. Amphenol Corp. reserves the right to amend, modify, or change any of the drawings, specifications, or other data without notice. Amphenol Corp. is not to be held responsible for any errors or omissions in this drawing, specification, or other data. Amphenol Corp. is not to be held responsible for any errors or omissions in this drawing, specification, or other data. Amphenol Corp. is not to be held responsible for any errors or omissions in this drawing, specification, or other data. Amphenol Corp. is not to be held responsible for any errors or omissions in this drawing, specification, or other data.

MATERIAL	REFERENCE
	TASK# 589

DRAWN	DATE
HARI R	28-Mar-11
ENGINEER	DATE
HARI R	28-Mar-11
APPROVED	DATE
CAD FILE	

TITLE  
 SMA REVERSE PLDARITY  
 CRIMP PLUG  
 (FOR RG-58, 141,LMR195)

DWG SIZE	DRAWING NO.	SCALE:	SHEET	1 OF 1
B	132113RP-10	201		

Amphenol  
 Connex

# Mouser Electronics

Authorized Distributor

Click to View Pricing, Inventory, Delivery & Lifecycle Information:

[Amphenol:](#)

[132113RP-10](#)