

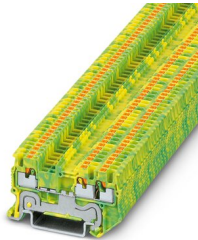
PT 1,5/S-TWIN-PE - Ground terminal



3208171

<https://www.phoenixcontact.com/us/products/3208171>

Please be informed that the data shown in this PDF document is generated from our online catalog. Please find the complete data in the user documentation. Our general terms of use for downloads are valid.



Ground terminal, number of connections: 3, connection method: Push-in connection, 1 level, cross section: 0.14 mm² - 1.5 mm², mounting type: NS 35/7,5, NS 35/15, color: green-yellow

Your advantages

- The Push-in connection terminal blocks are characterized by the system features of the CLIPLINE complete system and by easy and tool-free wiring of conductors with ferrules or solid conductors
- The compact design and front connection enable wiring in a confined space
- In addition to the testing facility in the double function shaft, all terminal blocks provide an additional test connection
- Tested for railway applications

Commercial data

Item number	3208171
Packing unit	1 pc
Minimum order quantity	50 pc
Sales key	BE22
Product key	BE2222
Catalog page	Page 39 (C-1-2019)
GTIN	4046356564359
Weight per piece (including packing)	6.33 g
Weight per piece (excluding packing)	5.82 g
Customs tariff number	85369010
Country of origin	DE

PT 1,5/S-TWIN-PE - Ground terminal



3208171

<https://www.phoenixcontact.com/us/products/3208171>

Technical data

Product properties

Product type	Ground terminal block
Area of application	Railway industry
	Machine building
	Plant engineering
Number of connections	3
Number of rows	1

Insulation characteristics

Overvoltage category	III
Degree of pollution	3

Electrical properties

Rated surge voltage	6 kV
Maximum power dissipation for nominal condition	0.56 W

Connection data

Grounding foot	Yes
Number of connections per level	3
Nominal cross section	1.5 mm ²

1 level

Note	Please observe the current carrying capacity of the DIN rails.
Stripping length	8 mm ... 10 mm
Internal cylindrical gage	A1 / B1
Connection in acc. with standard	IEC 60947-7-2
Conductor cross section rigid	0.14 mm ² ... 1.5 mm ²
Cross section AWG	26 ... 14 (converted acc. to IEC)
Conductor cross section flexible	0.14 mm ² ... 1.5 mm ²
Conductor cross section, flexible [AWG]	26 ... 14 (converted acc. to IEC)
Conductor cross-section flexible (ferrule without plastic sleeve)	0.14 mm ² ... 1.5 mm ²
Flexible conductor cross section (ferrule with plastic sleeve)	0.14 mm ² ... 1 mm ² Using the AI-S 1-8 TQ ferrule, Item No. 1200293, is recommended

1 level Connection cross sections directly pluggable

Conductor cross section rigid	0.25 mm ² ... 1.5 mm ²
Conductor cross-section flexible (ferrule without plastic sleeve)	0.34 mm ² ... 1.5 mm ²
Flexible conductor cross section (ferrule with plastic sleeve)	0.34 mm ² ... 1 mm ²

Ex data

Rated data (ATEX/IECEx)

Identification	⊕ II 2 GD Ex eb IIC Gb
Operating temperature range	-60 °C ... 110 °C

PT 1,5/S-TWIN-PE - Ground terminal



3208171

<https://www.phoenixcontact.com/us/products/3208171>

Ex-certified accessories	3208184 D-PT 1,5/S-TWIN
	1204504 SZF 0-0,4X2,5
	3022276 CLIPFIX 35-5
	3022218 CLIPFIX 35
output	(Permanent)

Ex connection data General

Nominal cross section	1.5 mm ²
Rated cross section AWG	16
Connection capacity rigid	0.14 mm ² ... 1.5 mm ²
Connection capacity AWG	26 ... 16
Connection capacity flexible	0.14 mm ² ... 1.5 mm ²
Connection capacity AWG	26 ... 16

Dimensions

Width	3.5 mm
End cover width	2.2 mm
Height	54 mm
Depth	30.5 mm
Depth on NS 35/7,5	32 mm
Depth on NS 35/15	39.5 mm

Material specifications

Color	green-yellow
Flammability rating according to UL 94	V0
Insulating material group	I
Insulating material	PA
Static insulating material application in cold	-60 °C
Temperature index of insulation material (DIN EN 60216-1 (VDE 0304-21))	130 °C
Relative insulation material temperature index (Elec., UL 746 B)	130 °C
Fire protection for rail vehicles (DIN EN 45545-2) R22	HL 1 - HL 3
Fire protection for rail vehicles (DIN EN 45545-2) R23	HL 1 - HL 3
Fire protection for rail vehicles (DIN EN 45545-2) R24	HL 1 - HL 3
Fire protection for rail vehicles (DIN EN 45545-2) R26	HL 1 - HL 3
Calorimetric heat release NFPA 130 (ASTM E 1354)	28 MJ/kg
Surface flammability NFPA 130 (ASTM E 162)	passed
Specific optical density of smoke NFPA 130 (ASTM E 662)	passed
Smoke gas toxicity NFPA 130 (SMP 800C)	passed

Mechanical properties

Mechanical data

Open side panel	Yes
-----------------	-----

Environmental and real-life conditions

PT 1,5/S-TWIN-PE - Ground terminal



3208171

<https://www.phoenixcontact.com/us/products/3208171>

Oscillation/broadband noise

Specification	DIN EN 50155 (VDE 0115-200):2008-03
Spectrum	Service life test category 2, bogie-mounted
Frequency	$f_1 = 5 \text{ Hz}$ to $f_2 = 250 \text{ Hz}$
ASD level	6.12 (m/s ²) ² /Hz
Acceleration	3.12g
Test duration per axis	5 h
Test directions	X-, Y- and Z-axis
Result	Test passed

Shocks

Specification	DIN EN 50155 (VDE 0115-200):2008-03
Pulse shape	Half-sine
Acceleration	30g
Shock duration	18 ms
Number of shocks per direction	3
Test directions	X-, Y- and Z-axis (pos. and neg.)
Result	Test passed

Ambient conditions

Ambient temperature (operation)	-60 °C ... 105 °C (max. short-term operating temperature RTI Elec.)
Ambient temperature (storage/transport)	-25 °C ... 60 °C (for a short time, not exceeding 24 h, -60 °C to +70 °C)
Ambient temperature (assembly)	-5 °C ... 70 °C
Ambient temperature (actuation)	-5 °C ... 70 °C
Permissible humidity (storage/transport)	30 % ... 70 %

Standards and regulations

Connection in acc. with standard	IEC 60947-7-2
----------------------------------	---------------

Mounting

Mounting type	NS 35/7,5
	NS 35/15

PT 1,5/S-TWIN-PE - Ground terminal

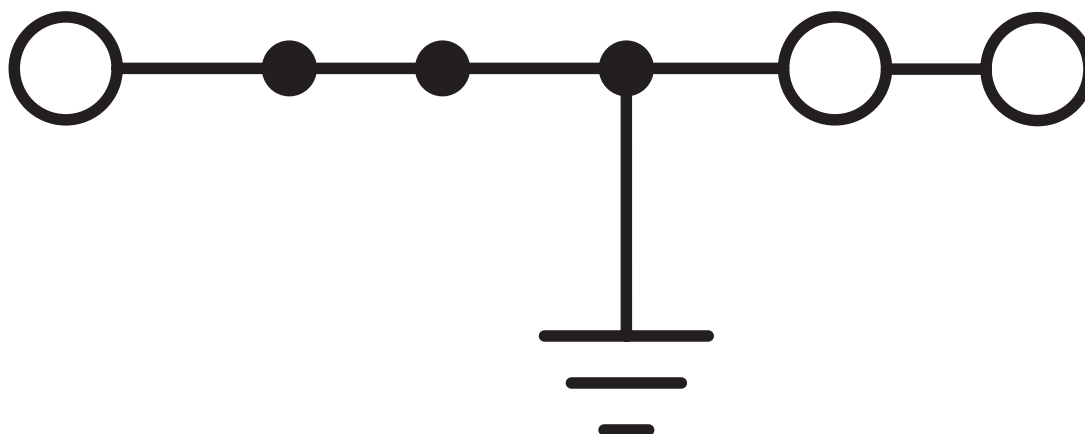


3208171

<https://www.phoenixcontact.com/us/products/3208171>

Drawings

Circuit diagram



PT 1,5/S-TWIN-PE - Ground terminal



3208171

<https://www.phoenixcontact.com/us/products/3208171>

Approvals

To download certificates, visit the product detail page: <https://www.phoenixcontact.com/us/products/3208171>

DNV

Approval ID: TAE00003JE



CSA

Approval ID: 2030668

Nominal voltage U_N

Nominal current I_N

Cross section AWG

Cross section mm^2

-

-

26 - 14

-



EAC

Approval ID: RU C-DE.AI30.B.01102



cULus Recognized

Approval ID: E60425

Nominal voltage U_N

Nominal current I_N

Cross section AWG

Cross section mm^2

Use group B

-

-

26 - 14

-

Use group C

-

-

26 - 14

-

Use group D

-

-

26 - 14

-



LR

Approval ID: LR2371832TA



NK

Approval ID: 14ME0912



RS

Approval ID: 22.44.01.00083.250



BV

Approval ID: 39980/B0 BV



VDE Zeichengenehmigung

Approval ID: 40039744

PT 1,5/S-TWIN-PE - Ground terminal



3208171

<https://www.phoenixcontact.com/us/products/3208171>

	Nominal voltage U_N	Nominal current I_N	Cross section AWG	Cross section mm^2
	-	-	-	0.14 - 1.5

ABS

Approval ID: 21-2192245-PDA



EAC Ex

Approval ID: RU C-DE.AB72.B.02351



IEC Ex

Approval ID: IECEx SEV13.0005U



ATEX

Approval ID: SEV13ATEX0159U



CCC

Approval ID: 2020322313000631



UKCA-EX

Approval ID: CML 22UKEX1224U



IEC Ex

Approval ID: IECEx SEV13.0005U



ATEX

Approval ID: SEV13ATEX0159U

PT 1,5/S-TWIN-PE - Ground terminal



3208171

<https://www.phoenixcontact.com/us/products/3208171>

Classifications

ECLASS

ECLASS-11.0	27141141
ECLASS-13.0	27250103

ETIM

ETIM 8.0	EC000901
----------	----------

UNSPSC

UNSPSC 21.0	39121400
-------------	----------

PT 1,5/S-TWIN-PE - Ground terminal



3208171

<https://www.phoenixcontact.com/us/products/3208171>

Environmental product compliance

China RoHS	Environmentally friendly use period: unlimited = EFUP-e
	No hazardous substances above threshold values

PT 1,5/S-TWIN-PE - Ground terminal

3208171

<https://www.phoenixcontact.com/us/products/3208171>



Accessories

FBS 2-3,5 - Plug-in bridge

3213014

<https://www.phoenixcontact.com/us/products/3213014>



Plug-in bridge, pitch: 3.5 mm, number of positions: 2, color: red

FBS 3-3,5 - Plug-in bridge

3213027

<https://www.phoenixcontact.com/us/products/3213027>



Plug-in bridge, pitch: 3.5 mm, number of positions: 3, color: red

PT 1,5/S-TWIN-PE - Ground terminal

3208171

<https://www.phoenixcontact.com/us/products/3208171>



FBS 4-3,5 - Plug-in bridge

3213030

<https://www.phoenixcontact.com/us/products/3213030>



Plug-in bridge, pitch: 3.5 mm, number of positions: 4, color: red

FBS 5-3,5 - Plug-in bridge

3213043

<https://www.phoenixcontact.com/us/products/3213043>



Plug-in bridge, pitch: 3.5 mm, number of positions: 5, color: red

PT 1,5/S-TWIN-PE - Ground terminal

3208171

<https://www.phoenixcontact.com/us/products/3208171>



FBS 10-3,5 - Plug-in bridge

3213056

<https://www.phoenixcontact.com/us/products/3213056>



Plug-in bridge, pitch: 3.5 mm, number of positions: 10, color: red

FBS 20-3,5 - Plug-in bridge

3213069

<https://www.phoenixcontact.com/us/products/3213069>



Plug-in bridge, pitch: 3.5 mm, number of positions: 20, color: red

PT 1,5/S-TWIN-PE - Ground terminal

3208171

<https://www.phoenixcontact.com/us/products/3208171>



FBS 2-3,5 BU - Plug-in bridge

3213086

<https://www.phoenixcontact.com/us/products/3213086>



Plug-in bridge, pitch: 3.5 mm, number of positions: 2, color: blue

FBS 3-3,5 BU - Plug-in bridge

3213099

<https://www.phoenixcontact.com/us/products/3213099>



Plug-in bridge, pitch: 3.5 mm, number of positions: 3, color: blue

PT 1,5/S-TWIN-PE - Ground terminal

3208171

<https://www.phoenixcontact.com/us/products/3208171>



FBS 4-3,5 BU - Plug-in bridge

3213109

<https://www.phoenixcontact.com/us/products/3213109>



Plug-in bridge, pitch: 3.5 mm, number of positions: 4, color: blue

FBS 5-3,5 BU - Plug-in bridge

3213112

<https://www.phoenixcontact.com/us/products/3213112>



Plug-in bridge, pitch: 3.5 mm, number of positions: 5, color: blue

PT 1,5/S-TWIN-PE - Ground terminal

3208171

<https://www.phoenixcontact.com/us/products/3208171>



FBS 10-3,5 BU - Plug-in bridge

3213125

<https://www.phoenixcontact.com/us/products/3213125>



Plug-in bridge, pitch: 3.5 mm, number of positions: 10, color: blue

FBS 20-3,5 BU - Plug-in bridge

3213138

<https://www.phoenixcontact.com/us/products/3213138>



Plug-in bridge, pitch: 3.5 mm, number of positions: 20, color: blue

PT 1,5/S-TWIN-PE - Ground terminal

3208171

<https://www.phoenixcontact.com/us/products/3208171>



FBS 2-3,5 GY - Plug-in bridge

3213153

<https://www.phoenixcontact.com/us/products/3213153>



Plug-in bridge, pitch: 3.5 mm, number of positions: 2, color: gray

FBS 3-3,5 GY - Plug-in bridge

3213167

<https://www.phoenixcontact.com/us/products/3213167>



Plug-in bridge, pitch: 3.5 mm, number of positions: 3, color: gray

PT 1,5/S-TWIN-PE - Ground terminal

3208171

<https://www.phoenixcontact.com/us/products/3208171>



FBS 4-3,5 GY - Plug-in bridge

3213180

<https://www.phoenixcontact.com/us/products/3213180>



Plug-in bridge, pitch: 3.5 mm, number of positions: 4, color: gray

FBS 5-3,5 GY - Plug-in bridge

3213183

<https://www.phoenixcontact.com/us/products/3213183>



Plug-in bridge, pitch: 3.5 mm, number of positions: 5, color: gray

PT 1,5/S-TWIN-PE - Ground terminal

3208171

<https://www.phoenixcontact.com/us/products/3208171>



FBS 10-3,5 GY - Plug-in bridge

3213196

<https://www.phoenixcontact.com/us/products/3213196>

Plug-in bridge, pitch: 3.5 mm, number of positions: 10, color: gray



FBS 20-3,5 GY - Plug-in bridge

3213206

<https://www.phoenixcontact.com/us/products/3213206>

Plug-in bridge, pitch: 3.5 mm, number of positions: 20, color: gray



PT 1,5/S-TWIN-PE - Ground terminal

3208171

<https://www.phoenixcontact.com/us/products/3208171>



GBS-ZB/26X6 - Group marker label for terminal marking

0809298

<https://www.phoenixcontact.com/us/products/0809298>



Group marking label, snaps onto terminal center for screw, spring-cage and quick connection terminal blocks, labeled with ESL 26x6 mm or EST 25x6 mm, in the foot part with Zack marker strip, length: 29 mm

SZF 0-0,4X2,5 - Screwdriver

1204504

<https://www.phoenixcontact.com/us/products/1204504>



Actuation tool, for ST terminal blocks, also suitable for use as a bladed screwdriver, size: 0.4 x 2.5 x 75 mm, 2-component grip, with non-slip grip

PT 1,5/S-TWIN-PE - Ground terminal



3208171

<https://www.phoenixcontact.com/us/products/3208171>

ATP-ST-TWIN - Partition plate

3030789

<https://www.phoenixcontact.com/us/products/3030789>

Partition plate, length: 75.2 mm, width: 2 mm, height: 75.2 mm, color: gray



D-PT 1,5/S-TWIN - End cover

3208184

<https://www.phoenixcontact.com/us/products/3208184>

End cover, length: 54 mm, width: 2.2 mm, height: 54 mm, color: gray



PT 1,5/S-TWIN-PE - Ground terminal

3208171

<https://www.phoenixcontact.com/us/products/3208171>



PT-IL - Mounting material

3208090

<https://www.phoenixcontact.com/us/products/3208090>

Operating decal for the push-in Technology



ST-BW 0 - Actuation tool

1200135

<https://www.phoenixcontact.com/us/products/1200135>

Actuation tool, for all 1.5 mm² spring cages from PT 1,5/S and FT 1,5/S



PT 1,5/S-TWIN-PE - Ground terminal

3208171

<https://www.phoenixcontact.com/us/products/3208171>



D-PT 1,5/S-TWIN-0,8 OG - End cover

1029571

<https://www.phoenixcontact.com/us/products/1029571>

End cover, length: 54 mm, width: 0.8 mm, height: 54 mm, color: orange



AI-S 1 - 8 TQ - Ferrule

1200293

<https://www.phoenixcontact.com/us/products/1200293>

Ferrule, S-Slimline, sleeve length: 8 mm, length: 14.5 mm, color: turquoise



PT 1,5/S-TWIN-PE - Ground terminal

3208171

<https://www.phoenixcontact.com/us/products/3208171>



NS 35/ 7,5 PERF 2000MM - DIN rail perforated

0801733

<https://www.phoenixcontact.com/us/products/0801733>



DIN rail perforated, acc. to EN 60715, material: Steel, galvanized, passivated with a thick layer, Standard profile, color: silver, Pack of 25 (50 m)

NS 35/ 7,5 UNPERF 2000MM - DIN rail, unperforated

0801681

<https://www.phoenixcontact.com/us/products/0801681>



DIN rail, unperforated, acc. to EN 60715, material: Steel, galvanized, passivated with a thick layer, Standard profile, color: silver, Pack of 25 (50 m)

PT 1,5/S-TWIN-PE - Ground terminal

3208171

<https://www.phoenixcontact.com/us/products/3208171>



NS 35/ 7,5 WH PERF 2000MM - DIN rail perforated

1204119

<https://www.phoenixcontact.com/us/products/1204119>



DIN rail perforated, acc. to EN 60715, material: Steel, Galvanized, white passivated, Standard profile, color: silver, Pack of 25 (50 m)

NS 35/ 7,5 WH UNPERF 2000MM-VPE 10 - DIN rail, unperforated

1204122

<https://www.phoenixcontact.com/us/products/1204122>



DIN rail, unperforated, acc. to EN 60715, material: Steel, Galvanized, white passivated, Standard profile, color: silver, Pack of 10 (20 m)

PT 1,5/S-TWIN-PE - Ground terminal

3208171

<https://www.phoenixcontact.com/us/products/3208171>



NS 35/ 7,5 AL UNPERF 2000MM - DIN rail, unperforated

0801704

<https://www.phoenixcontact.com/us/products/0801704>



DIN rail, unperforated, acc. to EN 60715, material: Aluminum, uncoated, Standard profile, color: silver, Pack of 25 (50 m)

NS 35/ 7,5 ZN PERF 2000MM - DIN rail perforated

1206421

<https://www.phoenixcontact.com/us/products/1206421>



DIN rail perforated, acc. to EN 60715, material: Steel, galvanized, Standard profile, color: silver, Pack of 25 (50 m)

PT 1,5/S-TWIN-PE - Ground terminal

3208171

<https://www.phoenixcontact.com/us/products/3208171>



NS 35/ 7,5 ZN UNPERF 2000MM - DIN rail, unperforated

1206434

<https://www.phoenixcontact.com/us/products/1206434>



DIN rail, unperforated, acc. to EN 60715, material: Steel, galvanized, Standard profile, color: silver, Pack of 25 (50 m)

NS 35/ 7,5 CU UNPERF 2000MM-VPE 10 - DIN rail, unperforated

0801762

<https://www.phoenixcontact.com/us/products/0801762>



DIN rail, unperforated, acc. to EN 60715, material: Copper, uncoated, Standard profile, color: copper-colored, Pack of 10 (20 m)

PT 1,5/S-TWIN-PE - Ground terminal

3208171

<https://www.phoenixcontact.com/us/products/3208171>



NS 35/ 7,5 CAP - End cap

1206560

<https://www.phoenixcontact.com/us/products/1206560>

DIN rail end piece, for DIN rail NS 35/7.5



NS 35/15 PERF 2000MM - DIN rail perforated

1201730

<https://www.phoenixcontact.com/us/products/1201730>



DIN rail perforated, similar to EN 60715, material: Steel, galvanized, passivated with a thick layer, Standard profile, color: silver, Pack of 25 (50 m)

PT 1,5/S-TWIN-PE - Ground terminal

3208171

<https://www.phoenixcontact.com/us/products/3208171>



NS 35/15 UNPERF 2000MM - DIN rail, unperforated

1201714

<https://www.phoenixcontact.com/us/products/1201714>



DIN rail, unperforated, similar to EN 60715, material: Steel, galvanized, passivated with a thick layer, Standard profile, color: silver, Pack of 25 (50 m)

NS 35/15 WH PERF 2000MM - DIN rail perforated

0806602

<https://www.phoenixcontact.com/us/products/0806602>



DIN rail perforated, similar to EN 60715, material: Steel, Galvanized, white passivated, Standard profile, color: white, Pack of 25 (50 m)

PT 1,5/S-TWIN-PE - Ground terminal

3208171

<https://www.phoenixcontact.com/us/products/3208171>



NS 35/15 WH UNPERF 2000MM-VPE 10 - DIN rail, unperforated

1204135

<https://www.phoenixcontact.com/us/products/1204135>



DIN rail, unperforated, similar to EN 60715, material: Steel, Galvanized, white passivated, Standard profile, color: silver, Pack of 10 (20 m)

NS 35/15 AL UNPERF 2000MM - DIN rail, unperforated

1201756

<https://www.phoenixcontact.com/us/products/1201756>



DIN rail, unperforated, similar to EN 60715, material: Aluminum, uncoated, Standard profile, color: silver

PT 1,5/S-TWIN-PE - Ground terminal

3208171

<https://www.phoenixcontact.com/us/products/3208171>



NS 35/15 ZN PERF 2000MM - DIN rail perforated

1206599

<https://www.phoenixcontact.com/us/products/1206599>



DIN rail perforated, similar to EN 60715, material: Steel, galvanized, Standard profile, color: silver, Pack of 25 (50 m)

NS 35/15 ZN UNPERF 2000MM - DIN rail, unperforated

1206586

<https://www.phoenixcontact.com/us/products/1206586>



DIN rail, unperforated, similar to EN 60715, material: Steel, galvanized, Standard profile, color: silver, Pack of 25 (50 m)

PT 1,5/S-TWIN-PE - Ground terminal

3208171

<https://www.phoenixcontact.com/us/products/3208171>



NS 35/15 CU UNPERF 2000MM-VPE 10 - DIN rail, unperforated

1201895

<https://www.phoenixcontact.com/us/products/1201895>



DIN rail, unperforated, similar to EN 60715, material: Copper, uncoated, Standard profile, color: copper-colored, Pack of 10 (20 m)

NS 35/15 CAP - End cap

1206573

<https://www.phoenixcontact.com/us/products/1206573>

DIN rail end piece, for DIN rail NS 35/15



PT 1,5/S-TWIN-PE - Ground terminal

3208171

<https://www.phoenixcontact.com/us/products/3208171>



NS 35/15-2,3 UNPERF 2000MM-VPE 10 - DIN rail, unperforated

1201798

<https://www.phoenixcontact.com/us/products/1201798>



DIN rail, unperforated, acc. to EN 60715, material: Steel, galvanized, passivated with a thick layer, Standard profile 2.3 mm, color: silver, Pack of 10 (20 m)

ZB 3,5:UNBEDRUCKT - Zack marker strip

0829414

<https://www.phoenixcontact.com/us/products/0829414>



Zack marker strip, Strip, white, unlabeled, can be labeled with: PLOTMARK, CMS-P1-PLOTTER, mounting type: snapped, for terminal block width: 3.5 mm, lettering field size: 3.5 x 10.5 mm, Number of individual labels: 10

PT 1,5/S-TWIN-PE - Ground terminal

3208171

<https://www.phoenixcontact.com/us/products/3208171>



ZB 3,5 CUS - Zack marker strip

0829415

<https://www.phoenixcontact.com/us/products/0829415>



Zack marker strip, can be ordered: Strip, white, labeled according to customer specifications, mounting type: snap into tall marker groove, for terminal block width: 3.5 mm, lettering field size: 3.5 x 10.5 mm, Number of individual labels: 10

ZB 3,5,LGS:FORTL.ZAHLEN - Zack marker strip

0801404

<https://www.phoenixcontact.com/us/products/0801404>



Zack marker strip, Strip, white, labeled, printed horizontally: consecutive numbers 1 ... 10, 11 ... 20, etc. up to 91 ... 100, mounting type: snapped, for terminal block width: 3.5 mm, lettering field size: 3.5 x 10.5 mm, Number of individual labels: 10

PT 1,5/S-TWIN-PE - Ground terminal

3208171

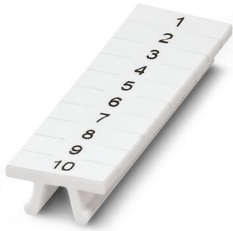
<https://www.phoenixcontact.com/us/products/3208171>



ZB 3,5,QR:FORT.ZAHLEN - Zack marker strip

0801405

<https://www.phoenixcontact.com/us/products/0801405>



Zack marker strip, Strip, white, labeled, Printed vertically: consecutive numbers 1 ... 10, 11 ... 20, etc. up to 91 ... 100, mounting type: snapped, for terminal block width: 3.5 mm, lettering field size: 3.5 x 10.5 mm, Number of individual labels: 10

UCT-TM 3,5 - Marker for terminal blocks

0829484

<https://www.phoenixcontact.com/us/products/0829484>



Marker for terminal blocks, Sheet, white, unlabeled, can be labeled with: TOPMARK NEO, TOPMARK LASER, BLUEMARK ID COLOR, BLUEMARK ID, BLUEMARK CLED, THERMOMARK PRIME, THERMOMARK CARD 2.0, THERMOMARK CARD, mounting type: snapped, for terminal block width: 3.5 mm, lettering field size: 2.95 x 10.5 mm, Number of individual labels: 102

PT 1,5/S-TWIN-PE - Ground terminal

3208171

<https://www.phoenixcontact.com/us/products/3208171>



UCT-TM 3,5 CUS - Marker for terminal blocks

0829581

<https://www.phoenixcontact.com/us/products/0829581>



Marker for terminal blocks, can be ordered: by sheet, white, labeled according to customer specifications, mounting type: snap into tall marker groove, for terminal block width: 3.5 mm, lettering field size: 2.95 x 10.5 mm, Number of individual labels: 102

GBS 3,5-25X3,5 - Group marker label for terminal marking

0830290

<https://www.phoenixcontact.com/us/products/0830290>



Group marking label, snaps into terminal center for push-in terminal blocks ...1.5/S,
Lettering field 25 x 3.5 mm, pitch 3.5 mm, labeled with EML (24 x 3)R

PT 1,5/S-TWIN-PE - Ground terminal

3208171

<https://www.phoenixcontact.com/us/products/3208171>



GBS 3,5-25X12 - Group marker label for terminal marking

0830292

<https://www.phoenixcontact.com/us/products/0830292>

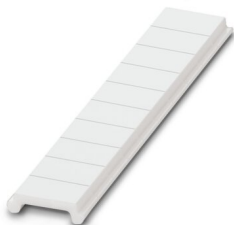


Group marking label, snaps into terminal center for push-in terminal blocks ...1.5/S,
Lettering field 25 x 12 mm, pitch 3.5 mm, labeled with EML (25.4 x 12.7)R

ZBF 3,5:UNBEDRUCKT - Zack Marker strip, flat

0829392

<https://www.phoenixcontact.com/us/products/0829392>



Zack Marker strip, flat, Strip, white, unlabeled, can be labeled with: PLOTMARK, CMS-P1-PLOTTER, mounting type: snapped, for terminal block width: 3.5 mm, lettering field size: 3.5 x 5.2 mm, Number of individual labels: 10

PT 1,5/S-TWIN-PE - Ground terminal

3208171

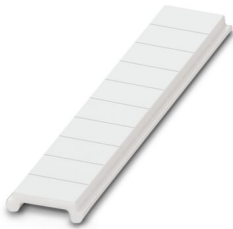
<https://www.phoenixcontact.com/us/products/3208171>



ZBF 3,5 CUS - Zack Marker strip, flat

0829394

<https://www.phoenixcontact.com/us/products/0829394>



Zack Marker strip, flat, can be ordered: Strip, white, labeled according to customer specifications, mounting type: snap into flat marker groove, for terminal block width: 3.5 mm, lettering field size: 3.5 x 5.2 mm, Number of individual labels: 10

ZBF 3,5,LGS:FORTL.ZAHLEN - Zack Marker strip, flat

0801406

<https://www.phoenixcontact.com/us/products/0801406>



Zack Marker strip, flat, Strip, white, labeled, printed horizontally: consecutive numbers 1 ... 10, 11 ... 20, etc. up to 91 ... 100, mounting type: snapped, for terminal block width: 3.5 mm, lettering field size: 5.15 x 3.5 mm, Number of individual labels: 10

PT 1,5/S-TWIN-PE - Ground terminal



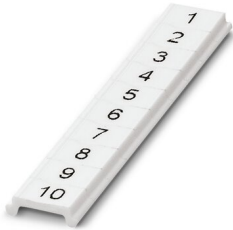
3208171

<https://www.phoenixcontact.com/us/products/3208171>

ZBF 3,5,QR:FORTL.ZAHLEN - Zack Marker strip, flat

0801407

<https://www.phoenixcontact.com/us/products/0801407>



Zack Marker strip, flat, Strip, white, labeled, Printed vertically: consecutive numbers 1 ... 10, 11 ... 20, etc. up to 91 ... 100, mounting type: snapped, for terminal block width: 3.5 mm, lettering field size: 5.15 x 3.5 mm, Number of individual labels: 10

UCT-TMF 3,5 - Marker for terminal blocks

0829486

<https://www.phoenixcontact.com/us/products/0829486>



Marker for terminal blocks, Sheet, white, unlabeled, can be labeled with: TOPMARK NEO, TOPMARK LASER, BLUEMARK ID COLOR, BLUEMARK ID, BLUEMARK CLED, THERMOMARK PRIME, THERMOMARK CARD 2.0, THERMOMARK CARD, mounting type: snapped, for terminal block width: 3.5 mm, lettering field size: 2.7 x 4.7 mm, Number of individual labels: 108

PT 1,5/S-TWIN-PE - Ground terminal

3208171

<https://www.phoenixcontact.com/us/products/3208171>



UCT-TMF 3,5 CUS - Marker for terminal blocks

0829644

<https://www.phoenixcontact.com/us/products/0829644>



Marker for terminal blocks, can be ordered: by sheet, white, labeled according to customer specifications, mounting type: snap into flat marker groove, for terminal block width: 3.5 mm, lettering field size: 2.7 x 4.7 mm, Number of individual labels: 108

MPS-MT - Test plugs

0201744

<https://www.phoenixcontact.com/us/products/0201744>



Test plugs, with solder connection up to 1 mm² conductor cross section, number of positions: 1, color: gray

PT 1,5/S-TWIN-PE - Ground terminal

3208171

<https://www.phoenixcontact.com/us/products/3208171>



MPS-IH WH - Insulating sleeve

0201663

<https://www.phoenixcontact.com/us/products/0201663>

Insulating sleeve, color: white



MPS-IH RD - Insulating sleeve

0201676

<https://www.phoenixcontact.com/us/products/0201676>

Insulating sleeve, color: red



PT 1,5/S-TWIN-PE - Ground terminal

3208171

<https://www.phoenixcontact.com/us/products/3208171>

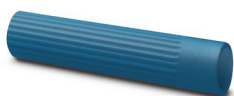


MPS-IH BU - Insulating sleeve

0201689

<https://www.phoenixcontact.com/us/products/0201689>

Insulating sleeve, color: blue



MPS-IH YE - Insulating sleeve

0201692

<https://www.phoenixcontact.com/us/products/0201692>

Insulating sleeve, color: yellow



PT 1,5/S-TWIN-PE - Ground terminal

3208171

<https://www.phoenixcontact.com/us/products/3208171>



MPS-IH GN - Insulating sleeve

0201702

<https://www.phoenixcontact.com/us/products/0201702>

Insulating sleeve, color: green



MPS-IH GY - Insulating sleeve

0201728

<https://www.phoenixcontact.com/us/products/0201728>

Insulating sleeve, color: gray



PT 1,5/S-TWIN-PE - Ground terminal

3208171

<https://www.phoenixcontact.com/us/products/3208171>



MPS-IH BK - Insulating sleeve

0201731

<https://www.phoenixcontact.com/us/products/0201731>

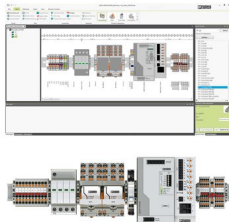
Insulating sleeve, color: black



PROJECT COMPLETE - Software

1050453

<https://www.phoenixcontact.com/us/products/1050453>



Intuitive planning and marking software for configuring terminal strips and for professional marking of marking materials for terminal blocks, conductors, cables, devices, and systems. The software is available for download

PT 1,5/S-TWIN-PE - Ground terminal

3208171

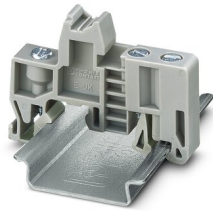
<https://www.phoenixcontact.com/us/products/3208171>

E/UK - End clamp

1201442

<https://www.phoenixcontact.com/us/products/1201442>

End clamp, material: PA, color: gray, Mounting on a DIN rail NS 32 or NS 35



E/UK 1 - End clamp

1201413

<https://www.phoenixcontact.com/us/products/1201413>

End clamps, for supporting the ends of double-level and three-level terminal blocks, width: 10 mm, color: gray



PT 1,5/S-TWIN-PE - Ground terminal



3208171

<https://www.phoenixcontact.com/us/products/3208171>

TMT (EX9,5)R - Marker for terminal blocks

0828295

<https://www.phoenixcontact.com/us/products/0828295>



Marker for terminal blocks, Roll, white, unlabeled, can be labeled with: THERMOMARK E.300 (D)/600 (D), THERMOMARK ROLL 2.0, THERMOMARK ROLL, THERMOMARK ROLL X1, THERMOMARK ROLLMASTER 300/600, THERMOMARK X1.2, mounting type: snapped, snap into tall marker groove, for terminal block width: 30000 mm, lettering field size: 9.5 x 50000 mm, Number of individual labels: 1

US-TM 100 - Marker for terminal blocks

0829255

<https://www.phoenixcontact.com/us/products/0829255>



Marker for terminal blocks, Card, white, unlabeled, can be labeled with: BLUEMARK ID COLOR, BLUEMARK ID, THERMOMARK PRIME, THERMOMARK CARD 2.0, THERMOMARK CARD, mounting type: snapped, lettering field size: 104 x 9.8 mm, Number of individual labels: 13

PT 1,5/S-TWIN-PE - Ground terminal



3208171

<https://www.phoenixcontact.com/us/products/3208171>

CLIPFIX 35 - End clamp

3022218

<https://www.phoenixcontact.com/us/products/3022218>



Quick mounting end clamp for NS 35/7,5 DIN rail or NS 35/15 DIN rail, with marking option, width: 9.5 mm, color: gray

CLIPFIX 35-5 - End clamp

3022276

<https://www.phoenixcontact.com/us/products/3022276>



Quick mounting end clamp for NS 35/7,5 DIN rail or NS 35/15 DIN rail, with marking option, with parking option for FBS...5, FBS...6, KSS 5, KSS 6, width: 5.15 mm, color: gray

PT 1,5/S-TWIN-PE - Ground terminal

3208171

<https://www.phoenixcontact.com/us/products/3208171>

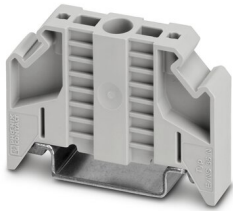


E/NS 35 N - End clamp

0800886

<https://www.phoenixcontact.com/us/products/0800886>

End clamp, width: 9.5 mm, color: gray



PS-3,5 - Test plugs

3031010

<https://www.phoenixcontact.com/us/products/3031010>

Test plugs, Modular test plug, number of positions: 1, color: red



PT 1,5/S-TWIN-PE - Ground terminal

3208171

<https://www.phoenixcontact.com/us/products/3208171>



DP PS-3,5 - Spacer plate

3031011

<https://www.phoenixcontact.com/us/products/3031011>



Spacer plate, length: 15.9 mm, width: 3.5 mm, height: 15.9 mm, number of positions: 1, color: red

PS-3,5/E - Test plugs

3031012

<https://www.phoenixcontact.com/us/products/3031012>



Test plugs, Individual test plug, number of positions: 1, color: red

Phoenix Contact 2023 © - all rights reserved
<https://www.phoenixcontact.com>

Phoenix Contact USA
586 Fulling Mill Road
Middletown, PA 17057, United States
(+717) 944-1300
info@phoenixcon.com