

Printed Circuit Mount

LPI Series

Low Profile International Transformers
Encapsulated

Direct Plug-in Replacement for Original FlatHead™ Design

Signal's LPI series are transformer which utilize unique insulating techniques including full encapsulation to meet international safety requirements. These transformers are ideal for low power applications where minimum height and reduced magnetic radiation are required.



Features and Benefits

- Encapsulated in order to meet harsh environmental conditions
- Rigid pin construction for easier board insertion and higher reliability
- Mounting holes provided for greater resistance to shock & vibration
- Improved electrical characteristics - regulation, temperature rise and efficiency.
- Reduced magnetic radiation

General Specifications

- Power - 2.5 VA to 18 VA
- Dielectric Strength - 4000 Vrms Hipot
- Primaries - Dual primaries, 115/230 V - 50/60 Hz
- Secondaries - Series or parallel
- Height - 1.050" to 1.22"
- Insulation System - Class B, 130° C

Agency Certifications

- UL recognized to UL 506 / UL 5085-2, File # E63829
- CSA certified to C22.2 #66.1, File # 221070



belfuse.com/signal

Part Number Selection

Part Number	VA	Secondary RMS Rating	
	Size	Series	Parallel
10-250-LPI	2.5	10 VCT @ 250 mA	5 V @ 500 mA
12-200-LPI	2.5	12.6 VCT @ 200 mA	6.3 V @ 400 mA
16-150-LPI	2.5	16 VCT @ 150 mA	8 V @ 300 mA
20-125-LPI	2.5	20 VCT @ 125 mA	10 V @ 250 mA
24-100-LPI	2.5	24 VCT @ 100 mA	12 V @ 200 mA
30-85-LPI	2.5	30 VCT @ 85 mA	15 V @ 170 mA
34-75-LPI	2.5	34 VCT @ 75 mA	17 V @ 150 mA
40-60-LPI	2.5	40 VCT @ 60 mA	20 V @ 120 mA
56-45-LPI	2.5	56 VCT @ 45 mA	28 V @ 90 mA
230-10-LPI	2.5	230 VCT @ 10 mA	115 V @ 20 mA
10-600-LPI	6	10 VCT @ 600 mA	5 V @ 1.2 A
12-450-LPI	6	12.6 VCT @ 450 mA	6.3 V @ 900 mA
16-350-LPI	6	16 VCT @ 350 mA	8 V @ 700 mA
20-300-LPI	6	20 VCT @ 300 mA	10 V @ 600 mA
24-250-LPI	6	24 VCT @ 250 mA	12 V @ 500 mA
30-200-LPI	6	30 VCT @ 200 mA	15 V @ 400 mA
34-170-LPI	6	34 VCT @ 170 mA	17 V @ 340 mA
40-150-LPI	6	40 VCT @ 150 mA	20 V @ 300 mA
56-100-LPI	6	56 VCT @ 100 mA	28 V @ 200 mA
230-25-LPI	6	230 VCT @ 25 mA	115 V @ 50 mA
10-900-LPI	9	10 VCT @ 900 mA	5 V @ 1.8 A
12-725-LPI	9	12.6 VCT @ 725 mA	6.3 V @ 1.45 A
16-560-LPI	9	16 VCT @ 560 mA	8V @ 1.12 A
20-450-LPI	9	20 VCT @ 450 mA	10 V @ 900 mA
24-375-LPI	9	24 VCT @ 375 mA	12 V @ 750 mA

Part Number	VA	Secondary RMS Rating	
	Size	Series	Parallel
30-300-LPI	9	30 VCT @ 300 mA	15 V @ 600 mA
34-265-LPI	9	34 VCT @ 265 mA	17 V @ 530 mA
40-225-LPI	9	40 VCT @ 225 mA	20 V @ 450 mA
56-160-LPI	9	56 VCT @ 160 mA	28 V @ 320 mA
230-40-LPI	9	230 VCT @ 40 mA	115 V @ 80 mA
10-1200-LPI	12	10 VCT @ 1.2 A	5 V @ 2.4 A
12-900-LPI	12	12.6 VCT @ 900 mA	6.3 V @ 1.8 A
16-700-LPI	12	16 VCT @ 700 mA	8 V @ 1.4 A
20-600-LPI	12	20 VCT @ 600 mA	10 V @ 1.2 A
24-500-LPI	12	24 VCT @ 500 mA	12 V @ 1 A
30-400-LPI	12	30 VCT @ 400 mA	15 V @ 800 mA
34-340-LPI	12	34 VCT @ 340 mA	17 V @ 680 mA
40-300-LPI	12	40 VCT @ 300 mA	20 V @ 600 mA
56-200-LPI	12	56 VCT @ 200 mA	28 V @ 400 mA
230-50-LPI	12	230 VCT @ 50 mA	115 V @ 100 mA
10-1800-LPI	18	10 VCT @ 1.8 A	5 V @ 3.6 A
12-1500-LPI	18	12.6 VCT @ 1.5 A	6.3 V @ 3 A
16-1100-LPI	18	16 VCT @ 1.1 A	8 V @ 2.2 A
20-900-LPI	18	20 VCT @ 900 mA	10 V @ 1.8 A
24-750-LPI	18	24 VCT @ 750 mA	12 V @ 1.5 A
30-600-LPI	18	30 VCT @ 600 mA	15 V @ 1.2 A
34-500-LPI	18	34 VCT @ 500 mA	17 V @ 1 A
40-450-LPI	18	40 VCT @ 450 mA	20 V @ 900 mA
56-320-LPI	18	56 VCT @ 320 mA	28 V @ 640 mA
230-75-LPI	18	230 VCT @ 75 mA	115 V @ 150 mA



Custom versions available upon request.

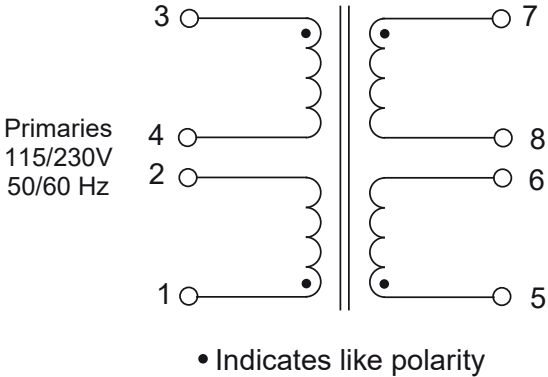
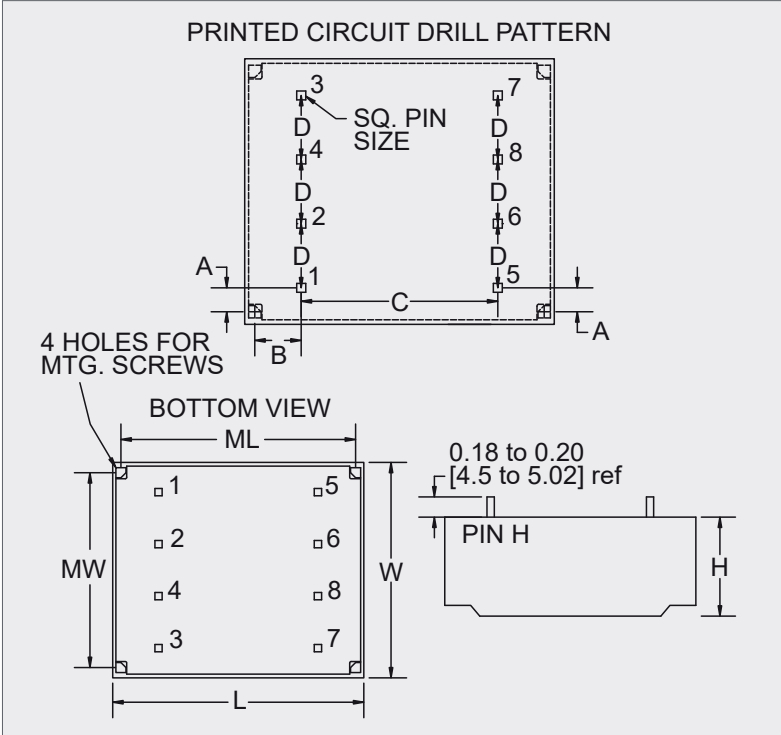


128 Atlantic Avenue, Lynbrook, NY 11563
 Toll Free 866-239-5777 | Tel 516-239-5777 | Fax 516-239-7208
 sales@signaltransformer.com | techhelp@signaltransformer.com

belfuse.com/signal

Mechanical Specifications

VA	Dimensions									Weight	Self Tap Screw Size	Pin Size
	A	B	C	D	L	W	H	ML	MW			
Size	Inches (mm)									lbs (kg)		Inches (mm)
2.5	0.19 (4.8)	0.29 (7.2)	1.61 (40.9)	0.37 (9.4)	2.37 (60.2)	1.65 (42.1)	0.72 (18.3)	2.19 (55.6)	1.50 (38.1)	0.27 (0.12)	#4	.025 (.635)
6	0.19 (4.8)	0.29 (7.2)	1.61 (40.9)	0.37 (9.4)	2.37 (60.2)	1.65 (42.1)	0.89 (22.7)	2.19 (55.6)	1.50 (38.1)	0.39 (0.17)	#4	.025 (.635)
9	0.19 (4.8)	0.29 (7.2)	1.61 (40.9)	0.37 (9.4)	2.37 (60.2)	1.65 (42.1)	1.08 (27.4)	2.19 (55.6)	1.50 (38.1)	0.51 (0.23)	#4	.025 (.635)
12	0.22 (5.6)	0.20 (5.1)	2.02 (51.3)	0.50 (12.7)	2.63 (66.8)	2.19 (55.6)	1.06 (26.6)	2.38 (60.4)	1.94 (49.2)	0.75 (0.34)	#6	.036 (.914)
18	0.22 (5.6)	0.20 (5.1)	2.02 (51.3)	0.50 (12.7)	2.63 (66.8)	2.19 (55.6)	1.18 (30.0)	2.38 (60.4)	1.94 (49.2)	0.95 (0.43)	#6	.036 (.914)



Custom versions available upon request.

128 Atlantic Avenue, Lynbrook, NY 11563

Toll Free 866-239-5777 | Tel 516-239-5777 | Fax 516-239-7208

sales@signaltransformer.com | techhelp@signaltransformer.com

belfuse.com/signal



Mouser Electronics

Authorized Distributor

Click to View Pricing, Inventory, Delivery & Lifecycle Information:

[Bel:](#)

[24-500-LPI](#) [10-1200-LPI](#) [10-900-LPI](#) [16-150-LPI](#) [12-200-LPI](#) [12-450-LPI](#) [24-750-LPI](#) [30-400-LPI](#) [40-150-LPI](#) [30-300-LPI](#) [30-85-LPI](#) [20-450-LPI](#) [20-125-LPI](#) [230-10-LPI](#) [20-900-LPI](#) [24-100-LPI](#) [40-225-LPI](#) [34-170-LPI](#) [56-160-LPI](#) [10-1800-LPI](#) [12-900-LPI](#) [12-1500-LPI](#) [20-300-LPI](#) [230-25-LPI](#) [56-45-LPI](#) [40-60-LPI](#) [56-100-LPI](#) [24-250-LPI](#) [56-320-LPI](#) [10-250-LPI](#) [10-600-LPI](#) [16-350-LPI](#) [230-50-LPI](#) [20-600-LPI](#) [34-265-LPI](#) [24-375-LPI](#) [30-600-LPI](#) [30-200-LPI](#) [56-200-LPI](#) [40-450-LPI](#) [230-75-LPI](#) [12-725-LPI](#) [16-560-LPI](#) [230-40-LPI](#) [34-75-LPI](#) [40-300-LPI](#)