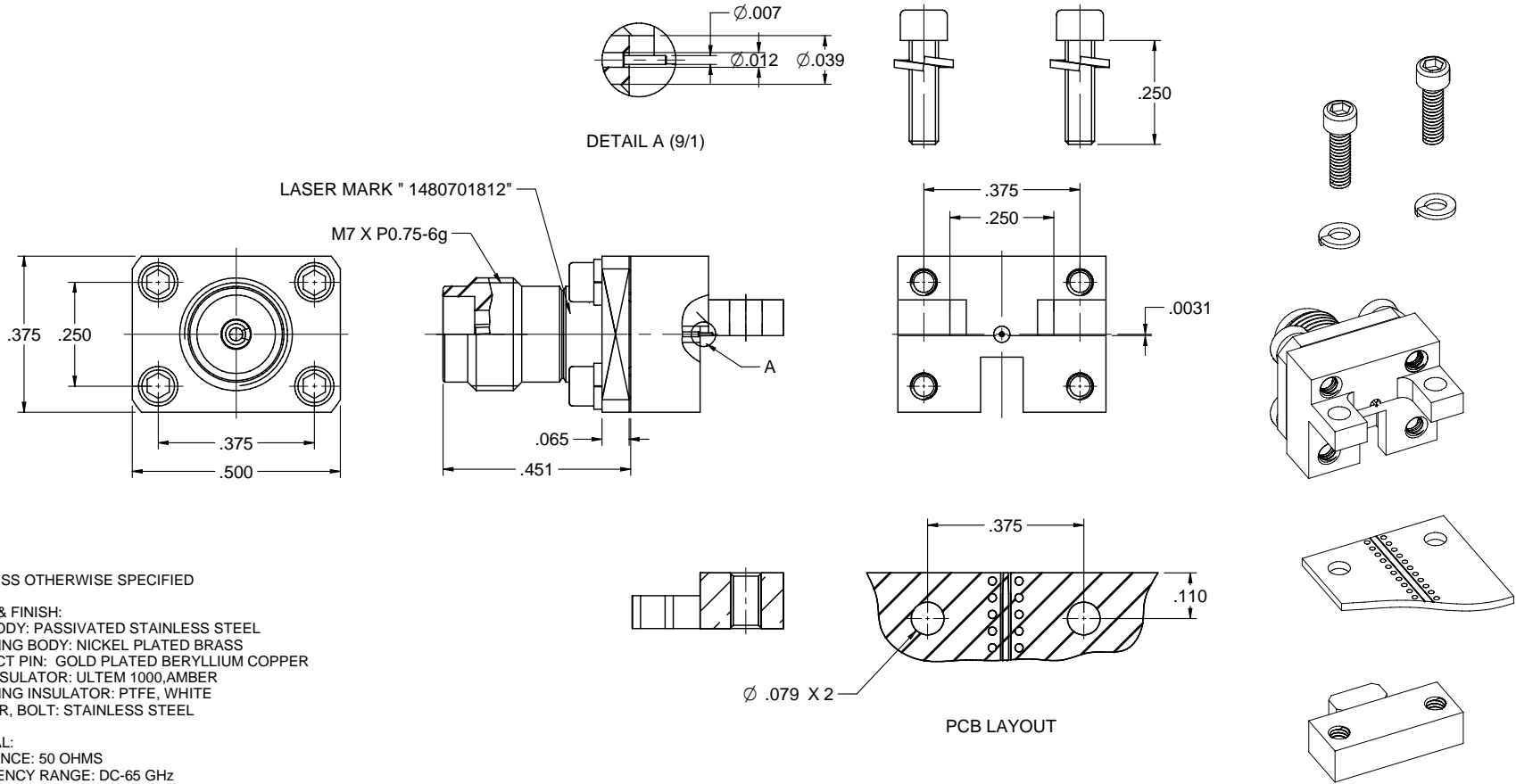


|              |                 |
|--------------|-----------------|
| MODEL NO.    | PACKAGING       |
| 148-0701-812 | ONE PCS PER BAG |

|     |            |            |
|-----|------------|------------|
| REV | ECO        | DATE       |
| 001 | ECO-19-007 | 08/28/2019 |



NOTES: UNLESS OTHERWISE SPECIFIED

1. MATERIAL & FINISH:
  - 1.1 MAIN BODY: PASSIVATED STAINLESS STEEL
  - 1.2 MOUNTING BODY: NICKEL PLATED BRASS
  - 1.3 CONTACT PIN: GOLD PLATED BERYLLIUM COPPER
  - 1.4 MAIN INSULATOR: ULTEM 1000, AMBER
  - 1.5 MOUNTING INSULATOR: PTFE, WHITE
  - 1.6 WASHER, BOLT: STAINLESS STEEL
2. ELECTRICAL:
  - 2.1 IMPEDANCE: 50 OHMS
  - 2.2 FREQUENCY RANGE: DC-65 GHz
  - 2.3 RETURN LOSS: -20DB MAX
  - 2.4 DIELECTRIC WITHSTANDING VOLTAGE: 500 VRMS MIN
  - 2.5 CONTACT RESISTANCE:
    - 2.5.1 CENTER CONTACT: 4 MILLIOHMS MAX
    - 2.5.2 OUTER CONTACT: 2.5 MILLIOHMS MAX
3. MECHANICAL:
  - 3.1 DURABILITY: 500CYCLES MIN
4. ENVIRONMENT:
  - 4.1 OPERATING TEMPERATURE: -55 TO 125°C
  - 4.2 THERMAL SHOCK: MIL-STD-202, METHOD 107, CONDITION B.
  - 4.3 SHOCK: MIL-STD-202, METHOD 213, CONDITION I
  - 4.4 VIBRATION: MIL-STD-202, METHOD 204, CONDITION D
  - 4.5 MOISTURE RESISTANCE: MIL-STD-202, METHOD 106
  - 4.6 SALT SPRAY: MIL-STD-202, METHOD 101, CONDITION B

|                                      |                            |   |              |
|--------------------------------------|----------------------------|---|--------------|
|                                      | Model No. 148-0701-811/820 | Johnson   |              |
|                                      | RoHS2<br>2011/65/EU        | Title: END LAUNCH JACK SCREW-ON TYPE LOW PROFILE 1.85mm, 0.007" PIN | Rev: 001     |
| XXXX - 02<br>XXXX - 01<br>ANGLES 15° | Date: 08/28/2019           | Drawing No. 148-0701-811/820  | Sheet 1 of 1 |

# Mouser Electronics

Authorized Distributor

Click to View Pricing, Inventory, Delivery & Lifecycle Information:

[Cinch Connectivity Solutions:](#)

[148-0701-812](#)