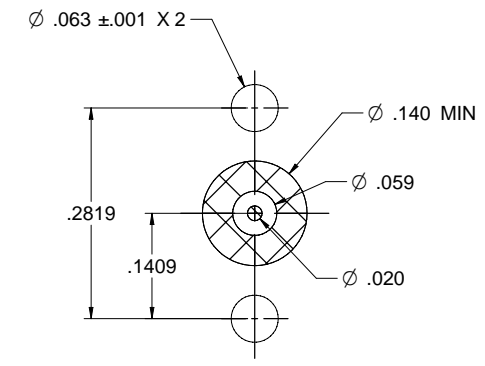
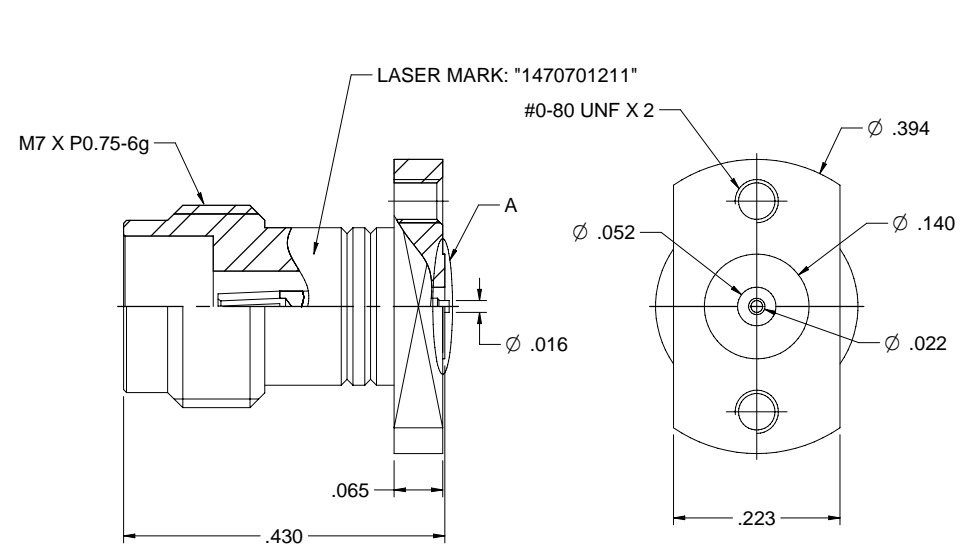
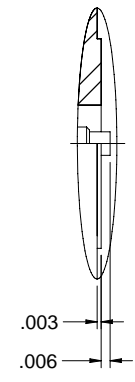
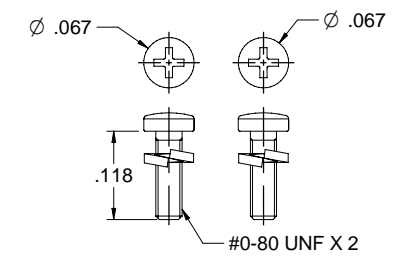


REV	ECO	DATE
001	ECO-17-002	11/28/2017

MODEL NO.	PACKAGING
147-0701-211	ONE PCS PER BAG



RECOMMENDED MOUNTING PATTEN



A DETAIL (10/1)

SCALE (3/1)

NOTES: UNLESS OTHERWISE SPECIFIED

1. MATERIAL & FINISH:
  - 1.1 BODY: PASSIVATED STAINLESS STEEL
  - 1.2 CONTACT PIN : GOLD PLATED BERYLLIUM COPPER
  - 1.3 INSULATOR: PTFE WHITE
  - 1.4 WASHER: STAINLESS STEEL
  - 1.5 BOLT: SUS302
2. ELECTRICAL:
  - 2.1 IMPEDANCE: 50 OHMS
  - 2.2 FREQUENCY RANGE: 0-50 GHz
  - 2.3 INSULATION RESISTANCE: 5000 MOHM MIN
  - 2.4 CONTACT RESISTANCE:
    - 2.4.1 CENER CONTACT: 4 MILLIOHM MAX
    - 2.4.2 OUTER CONTACT: 2.5 MILLIOHM MAX
  - 2.5 DIELECTRIC WITHSTANDING VOLTAGE: 500VRMS MIN
3. MECHANICAL:
  - 3.1 ENGAGEMENT/ DISENGAGEMENT FORCE: 0.23 NM MAX
  - 3.2 CONTACT RETENTION: 20 N MIN
  - 3.3 DURABILITY: 500 CYCLES MIN
4. ENVIRONMENT:
  - 4.1 THERMAL SHOCK: MIL-STD-202, METHOD 107, CONDITION B.
  - 4.2 OPERATING TEMPERATURE: -55 TO 125°C
  - 4.3 SALT SPRAY: MIL-STD-202, METHOD 101, CONDITION B
  - 4.4 SHOCK: MIL-STD-202, METHOD 213, CONDITION I
  - 4.5 VIBRATION: MIL-STD-202, METHOD 204, CONDITION D
  - 4.6 MOISTURE RESISTANCE: MIL-STD-202, METHOD 106

# Mouser Electronics

Authorized Distributor

Click to View Pricing, Inventory, Delivery & Lifecycle Information:

[Cinch Connectivity Solutions:](#)

[147-0701-211](#)