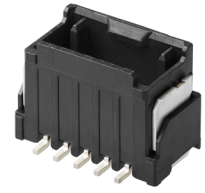


# Micro-One Wire-to-Board Connectors

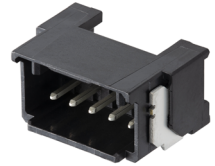


Compact Micro-One Wire-to-Board Connector with integrated ISL, independent TPA and potting capability, provides secure electrical contact, superior mating retention and protection against harsh environment conditions

## Features and Advantages



Micro-One Connector, Vertical Version



Micro-One Connector, Right-Angle Version



Micro-One Receptacle housing with integrated ISL



Micro-One Receptacle Housing for TPA Retainer



Micro-One TPA Receptacle

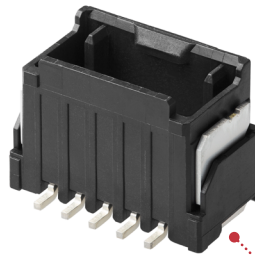


Receptacle Housing

**Independent secondary lock (ISL)**  
Detects incomplete terminal insertion

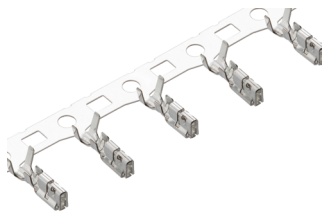
**2.00mm pitch low-profile design**  
Reduces weight and saves space

**UL certified connectors**  
Ensures reliability



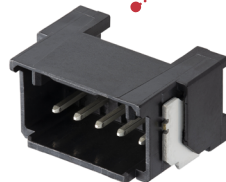
Vertical Header

**2- to 8- circuit vertical and right-angle header assembly**  
Offers design flexibility

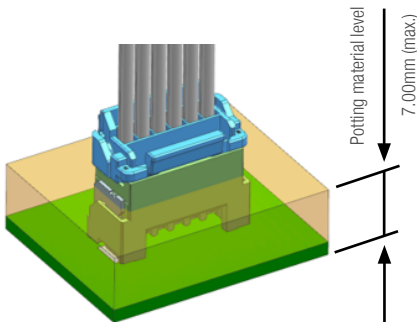


Crimp Terminal

56134-9001 for 22 to 24 AWG  
56134-9002 for 26 to 28 AWG



Right-Angle Header



Vertical Header with Potting Capability (217063 Series)

**Potting liquid (up to 7.00mm height)**  
Prevents ingress of dust and moisture



**Terminal Position Assurance (TPA)**  
Ensures terminals are fully seated in the housing

# Micro-One Wire-to-Board Connectors



## Market and Applications

### Consumer

- Refrigerators
- Air conditioners
- Hot water gas heaters
- Vacuum cleaners
- Washing machines

### Industrial

- Power tools
- Test equipment
- Robots
- Factory automation
- Drones
- Vending machines



Vending Machine



White Goods



Drones

## Specifications\*

### REFERENCE INFORMATION

Packaging:  
 Header – Embossed  
 Receptacle Housing – Bag  
 Terminal - Reel  
 UL Certified: Yes  
 Designed In: Millimeters  
 RoHS: Yes  
 Glow Wire: Yes (217063, 217064, 205979, 212724, 212725)

### ELECTRICAL

Voltage (max.): 250V  
 Current (max.): 4.0A (2 circuit, 22 AWG)

### MECHANICAL

Durability (max.): 30 cycles

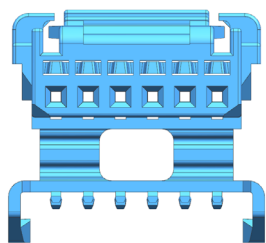
### PHYSICAL

Housing Color: Natural or Black  
 Contact: Copper Alloy  
 Plating:  
 Terminal Pin — Tin-Bismuth over Nickel  
 Crimp Terminal – Tin  
 Wire Size: 22 to 28 AWG  
 Operating Temperature: -40 to +105°C

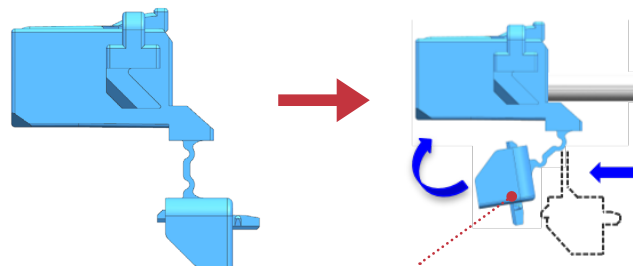
\*Refer to product specifications (2059790000-PS) for other electrical specifications

## RECEPTACLE ISL FUNCTION

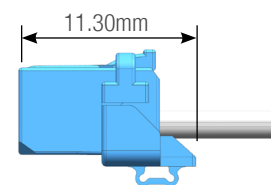
As shipped



After terminal insertion



After ISL closed

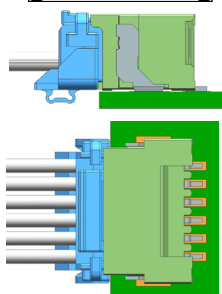


Mating by deforming the ISL part

### MATED VIEW

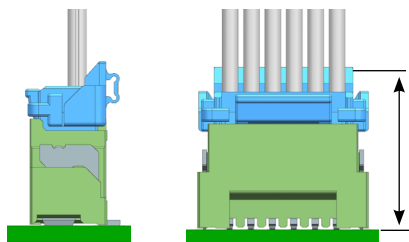
Right Angle

16.20mm

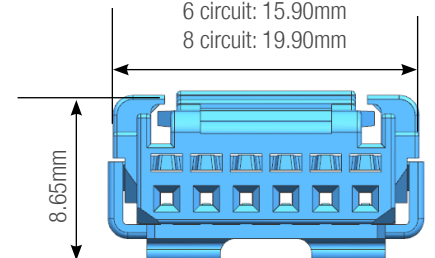


Vertical

15.20mm



2 circuit: 7.90mm  
 6 circuit: 15.90mm  
 8 circuit: 19.90mm

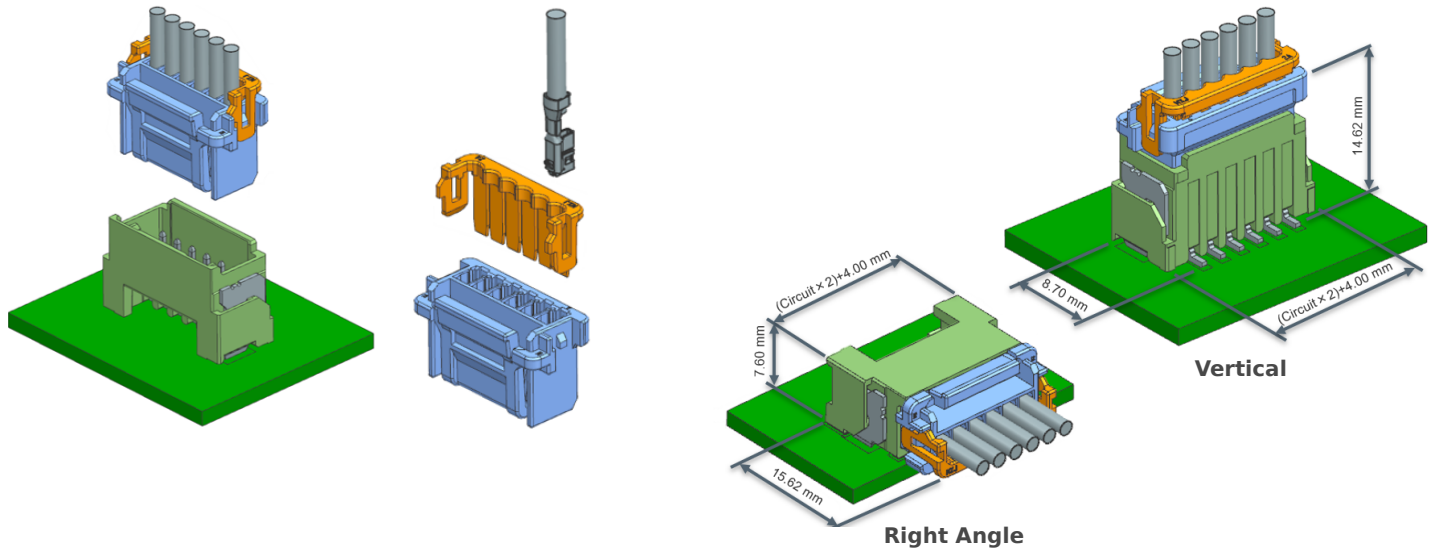


# Micro-One Wire-to-Board Connectors



## RECEPTACLE TPA FUNCTION

## MATED VIEW



## Current Derating Reference Information

AWG#	Amps (A)		
	2-Circuit	4-Circuit	8-Circuit
22	4.0	3.5	3.0
24			
26	3.5	3.0	2.5
28	3.0	2.5	2.0

## Ordering Information

Series No.	Description	Potting Capability	Glow Wire	Circuits / Wire size (AWG)	Rows	Color
<a href="#">217063-00XY</a>	Vertical header	Yes	Yes	2, 3, 4, 5, 6, 7, 8	Single	Black
<a href="#">217064-00X1</a>	Right-angle header	No	Yes			
<a href="#">205971-00XY</a>	Vertical header	No	No			
<a href="#">205972-00X1</a>	Right-angle header	No	No			
<a href="#">205979-20X1</a>	Receptacle housing	No	Yes			
<a href="#">212724-20X1</a>		No	Yes			
<a href="#">56134-9001</a>	Crimp terminal	-	-	22 to 24	-	-
<a href="#">56134-9002</a>		-	-	26 to 28	-	-
<a href="#">212725-20X0</a>	TPA Retainer	-	Yes	2, 3, 4, 5, 6, 7, 8	Single	Gray

X = Circuit  
 Y=1; Without cover tape  
 Y=3; With cover tape  
 Y=5; Without cover tape  
 Y=7; With cover tape

[www.molex.com/link/micro-one.html](http://www.molex.com/link/micro-one.html)

Molex is a registered trademark of Molex, LLC in the United States of America and may be registered in other countries; all other trademarks listed herein belong to their respective owners.