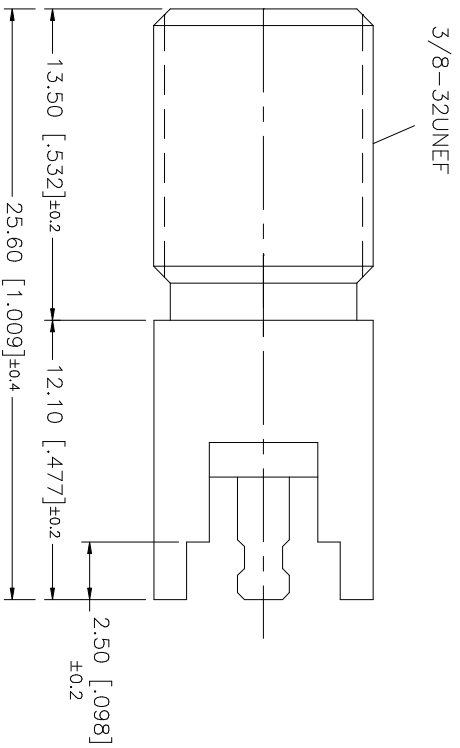
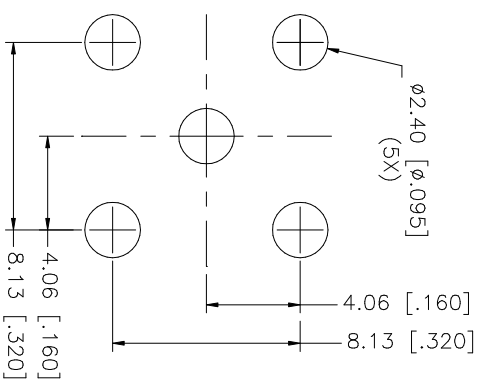
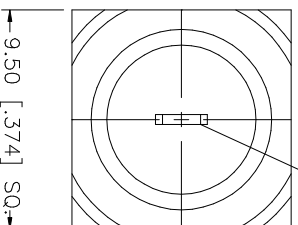


REV.	DATE	DESCRIPTION
A	06/03/03	ADD MOUNTING HOLES / UPDATE DRAWING FORMAT
B	06/25/04	MODIFY PLATING SPEC.



CONTACT MUST BE CAPTIVATED
BUT FREE TO ROTATE



P.C.B. MOUNTING HOLES

8																			
7																			
6																			
5																			
4	INSULATOR		P.P.	NATURAL	1														
3	CONTACT PIN		BRASS	TIN	1														
2	INSULATOR		P.P.	NATURAL	1														
1	BODY		BRASS	TIN	1														
	DESCRIPTION		MATERIAL	FINISH	QTY														
										<p>UNLESS OTHERWISE SPECIFIED DIMENSIONS ARE IN MILLIMETERS. DIMENSIONS IN [] ARE IN INCHES AND FOR CUSTOMER REFERENCE ONLY.</p> <p>UNLESS OTHERWISE SPECIFIED TOLERANCES FOR MILLIMETERS ARE:</p> <p>0.5 - 8mm ± 0.20mm 8 - 30mm ± 0.40mm 30 - 120mm ± 0.50mm</p> <p>UNLESS OTHERWISE SPECIFIED TOLERANCES FOR INCHES ARE:</p> <p>.020 - .315 = ± 0.007" .315 - 1.180 = ± 0.015" 1.180 - 4.724 = ± 0.020"</p> <p>DO NOT SCALE DRAWING</p>									
		APPROVALS		DATE															
		DRAWN G.R.S.		06/25/04															
		CHECKED																	
		ISSUED																	
		SHEET 1 OF 1																	
		CAD FILE C:/222/222141.DWG																	
		DWG. NO. 222141.DWG																	
		REV. B																	
		SIZE A																	
		SCALE NA																	
<p>Amphenol Connex</p> <p>PART DESCRIPTION</p> <p>F.P.C. MOUNT CONNECTOR</p> <p>PART NO. 222141</p>																			

Mouser Electronics

Authorized Distributor

Click to View Pricing, Inventory, Delivery & Lifecycle Information:

[Amphenol:](#)

[222141](#)